

AGRIFOODSA MAG

FREE SUPPLIERS GUIDE

AUG - SEP 2023
Vol 8 • No 2



www.worldfocusagri.co.za

UNLEASH THE GREEN REVOLUTION!

World Focus Agri products act
as an organic growth stimulant
throughout the plants life cycle.

ORGANIC GROWTH
STIMULANT

ORGANIC LEAF
NUTRITION

MICRONIZED
LIME GYPSUM

LAND
CORRECTORS





BETER VENNOOTSAPPE. BETER PRESTASIE

Is jy op soek na 'n maatskappy wat jou boerderybehoefte verstaan? Wat jou visie van beter opbrengste en optimale prestasie deel? **AECI Plant Health het die antwoorde.**

Met 'n wye reeks volhoubare oplossings wat die natuur se potensiaal ontsluit, tesame met sterk tegniese ondersteuning, help **AECI** jou om jou gewasprestasie te verbeter. As een van die grootste verspreiders van landbouchemiese produkte in Suid-Afrika met 'n netwerk van meer as 185 gewasadviseurs, is ons die perfekte vennoot op jou plaas.

ONE AECI – VIR 'N BETER WÊRELD.

Kontak vandag nog jou gewasadviseur.

good chemistry

T: +27 11 823 8000

E: planthealth@aeciworld

W: www.aeciph.com

AECI[®]
PLANT HEALTH



If we've learned anything from recent years of vast personal, societal and global change, it's that we don't have any idea what's coming next. That despite proper planning and preparation, we can never anticipate how our lives will unfold.

Maybe the daily reminders of the instability around us provide a source of comfort, as they reinforce the universality of our experiences and their corresponding feelings. Perhaps focussing on what is within our control, we can promote progress toward a more definite future.

What we do know for certain, is that the advertisers in the August | September 2023 edition of the AGRIFOODSA Magazine can guarantee excellence in customer service. With a large variety of products and services, our readers can rest assured that success is imminent with the assistance of these experts in their respective fields.

Our cover featured advertiser for this edition is Afrikelp. With a rich history, ranging almost 50 years, Afrikelp is committed to continuously provide trusted seaweed solutions. Our liquid seaweed is extracted from the unique brown kelp, Ecklonia maxima, which can only be found on the south-west coast of South Africa. This unique extract contains essential biostimulants that increase yield, enhance the quality and improve the growth performance of your crops. Afrikelp biostimulants, rich in auxin, can be applied as a foliar spray, dip or drench and through irrigation systems to stimulate and support root and shoot growth as well as fruit development. To find out more about their products and services, go to www.afrikelp.com.

Our AGRIFOODSA.INFO website (www.agrifoodsa.info) is in the first phases of its complete redesign. Check in regularly to keep up with the progress.

Also, be sure to head on over to our AFSA Facebook page (www.facebook.com/agrifoodsa) for more competitions, funnies, Advertiser Showcases and recipes, as well as helpful and informative articles uploaded on the daily.

Lastly, be on the lookout for our bi-monthly AGRIFOODSA Newsletter, featuring our digital magazine, informative articles, exciting competitions and more. To sign up to our newsletter, contact info@agrifoodsa.info.

We are never able to predict what's to come, we can wonder about the secrets of the great unknown while staying adaptable to the intriguing advancements that may catch us by surprise. The wonders of life—however pleasant, painful, or unpredictable—are limitless. Despite what lies ahead, the pursuit will unquestionably be riveting.

All the best,

Chantell de Bruin

EDITOR IN CHIEF
chantellschmahl

EDITORIAL COMMITTEE

Editor in chief : Chantell de Bruin
Managing director : Mabel Schmahl
Production manager : Ronel Schmahl
Content manager : Aby Maclellan
Administrative assistant : Robin Smith

ACCOUNTS

Mariaan Kruger : +27 (0) 72 623 8073
accounts@agrifoodsa.info

ADVERTISING & RATES

Louis de Bruin : +27 (0) 82 060 2398
louis@agrifoodsa.info

Mabel Schmahl : +27 (0) 82 563 4427
mabel@agrifoodsa.info

COVER PHOTO

AFRIKELP (PTY) LTD : Go to www.afrikelp.com



LAYOUT, PUBLISHING & DISTRIBUTION

MES Consultants South Africa

Format	: B5, full-colour, glossy magazine
Frequency	: Bi-monthly
Language	: Bilingual
LSM	: 6-10
Print run	: 65 000 per annum
Digital run	: 12 000 per annum
Readership	: 85 000
Distribution	: Nationally available at agricultural outlets: Visit our website for the full list
Read online	: www.agrifoodsa.info/magazine

AGRIFOODSA
SUPPLIERS GUIDE

AGRIFOODSA
INFO

MES
CONSULTANTS
SOUTH AFRICA

AGRI DATA
SOUTH AFRICA

© 2023 AGRIFOODSA Magazine. All rights reserved.

Planter Monitor

- Seed per 100m per row, seed population
- Hectares worked and much more
- Easy to install and maintain
- Fertiliser and turning of axes
- Can be applied to most planters
- Real tough, rust and water resistant

Cut losses with PRECISION Plant with VISION

Process Monitor for Air Seeders

- Area
- Speed
- Tacho up to 4 axes
- Alarm on each function
- Easy to install
- Bin / Tank full
- Bin / Tank empty

Tel: 012 345 3193
Cell: +27 (0) 72 181 5266
www.electrolee.co.za
info@electrolee.co.za
sales@electrolee.co.za

3 YEAR GUARANTEE

CONTENTS



AECI PLANT HEALTH

UNLOCKING
NATURE'S POTENTIAL

WWW.AECIWORLD.COM

Page 02



ATI Systems
Committed to Quality

ATI SYSTEMS

HIGH PERFORMANCE AC DRIVES

WWW.ATISYSTEMS.CO.ZA

Page 40



AFRIKELP

HARNESS THE
POWER OF NATURE.

WWW.AFRIKELP.COM

Cover



AUTO-X

WILLARD, SABAT, RENTECH

WWW.AUTO-X.CO.ZA

Page 19



AGRI SPRAY

IMPROVING YOUR FARMING
WITH KNOWLEDGE

WWW.AGRISPRAY.CO.ZA

Page 17



BISA

ECO-FRIENDLY
FLY CONTROL

WWW.BIOINSECTSA.COM

Page 51



AGRICOLLEGES
international
educate to grow

AGRICOLLEGES

START YOUR AGRICULTURAL
CAREER WITH US

WWW.AGRICOLLEGES.CO.ZA

Page 43



BOSS PROP shaft

PROPSHAFT BALANCING.
CV JOINT CENTRE

WWW.FACEBOOK.COM/
BOSSPROP2605

Page 37



AGRIHOW™, MAG, MARKETPLACE™, NEWSLETTER, WEB

AGRIFOODSA

YOUR ALL-IN-ONE STOP FOR
EVERYTHING AGRICULTURE

WWW.AGRIFOODSA.INFO

Page 07



BRITS BAG MANUFACTURERS

AGRICULTURAL AND
COMMERCIAL PACKAGING

+27 (0) 12 250 0120

Page 22



AGT FOODS AFRICA

FROM PRODUCER
TO THE WORLD

WWW.AGTFOODS.CO.ZA

Page 49



BRITS POLES

BUILDING FENCING
AND TRANSMISSION

WWW.BRITSPOLES.CO.ZA

Page 28



ALL PROOF COATINGS - BUTYLSEAL

WATER BASED NON-SLIP
PROTECTIVE COATINGS

WWW.ALLPROOF.CO.ZA

Page 31



BRUKER SA

SPECTROSCOPIC SOLUTIONS
IN THE MILK & DAIRY INDUSTRY

WWW.BRUKER.COM/DAIRY

Page 47



ALPHA DAMME

COST EFFECTIVE,
QUALITY STEEL STRUCTURES

WWW.ALPHADAMME.CO.ZA

Page 26



BUSHWAKKA

OFF-ROAD CAMPING TRAILERS
AND 4X4 ADVENTURE PRODUCTS

WWW.BUSHWAKKA.COM

Page 13



Aquadam is a trademark of Aquasteel (Pty) Ltd

AQUADAM

DOME SHELTER STRUCTURES
FOR LIVESTOCK & AGRICULTURE

WWW.AQUADAM.CO.ZA

Page 18



DAMIT

EASY EARTH DAM SEALING

WWW.DAMITDAMSEALER.CO.ZA

Page 33



DICLA HORTICULTURE

TUNNEL & IRRIGATION
EQUIPMENT

WWW.DICLA.COM

Page 50



IRRIGATION SURVEY
& DESIGN (PTY) LTD.
MEMBER OF THE SAA
SNE ACCREDITED

IRRIGATION SURVEY

SURVEY AND DESIGN OF ALL
IRRIGATION SYSTEMS AND MORE

WWW.IRRIGATIONSURVEYANDDESIGN.CO.ZA

Page 09



EHD COMPONENTS

ENGINE & HEAVY DUTY
COMPONENTS

WWW.EHD.CO.ZA

Page 48



JD HOFFMAN

AGRICULTURAL SOLUTIONS
TAILOR MADE FOR YOU

WWW.JDHOFFMANEARTHMOVING.CO.ZA

Page 27



ELECTROLEE

PLANTERS, MONITORS
& PROCESS MONITORS

WWW.ELECTROLEE.CO.ZA

Page 03



KNITTEX

KNITTED AGRICULTURAL
AND DECORATIVE NETTING

WWW.KNITTEX.CO.ZA

Page 29

ESAB SA

ESAB SA

REBEL WELDING MACHINES

WWW.ESAB.CO.ZA

Page 27



KRUREKPRO

FIREFIGHTING EQUIPMENT

WWW.FIREFIGHTINGEQUIPMENT.CO.ZA

Page 31



EVAPORT OUTDOOR

KEEPING IT REAL COOL

WWW.BUDDYCOOL.CO.ZA

Page 32



LEADING EDGE

GLOBAL LEADERS IN
SILAGE MANAGEMENT

WWW.AGRIFOODSA.INFO/
DIRECTORY/LEADING-EDGE

Page 41



FERTASA

FERTILIZER ASSOCIATION
OF SOUTH AFRICA

WWW.FERTASA.CO.ZA

Pages 15, 34-35 & 54-55



LOADTECH LOAD CELLS

DIGITAL INDICATORS

WWW.LOADTECH.CO.ZA

Pages 14 & 52



FLEXI LININGS

16 YEARS GUARANTEE

WWW.FLEXILININGS.COM

Page 53



NANOTEK ULTIMATE COATINGS - HYDRASOL

SOLAR NANO COATING

NANOTEK@ULTIMATECOATINGS@GMAIL.COM

Pages 38-39



HI-TEC

HIGH QUALITY FOOTWEAR

WWW.INTERCEPTOR.CO.ZA

Page 12



NEDBANK

TAKE YOUR AGRIBUSINESS
TO THE NEXT LEVEL

AGRICULTURE@NEDBANK.CO.ZA

Pages 10-11



IMPAC CROPSURE

INSURE YOUR CROPS

WWW.IMPACCROPSURE.CO.ZA

Page 15



NEPTUN BOOT

QUALITY SAFETY FOOTWEAR

WWW.NEPTUNBOOT.CO.ZA

Page 42



NETAFIM

GROW MORE WITH LESS™

WWW.NETAFIM.CO.ZA

Page 46



QUANTUM FOODS - NOVA FEEDS

QUALITY ANIMAL FEED

WWW.NOVAFEEDS.CO.ZA

BACK COVER



NIEUWOUDT SPRAY

WE BUILD SPRAYERS
FOR CITRUS ORCHARDS

WWW.NIEUWOUDTSPRAY.CO.ZA

Page 43



REINKE SOUTH AFRICA

QUALITY IRRIGATION
AND INNOVATION

WWW.REINKE.COM

Page 08



NOORDWES DAMME

WATER STORAGE
SOLUTIONS

WWW.NWDAMME.CO.ZA

Page 21



RHINO TRALIES

CUSTOM MADE RAILS

WWW.RHINOTRALIES.CO.ZA

Page 43



OP EN TOP CANOPIES

WATER BARROWS, CANOPIES,
DUSTBINS AND MORE

JPDUPRE@LANTIC.NET

Page 37



ROTRIX AFRICA

MECHANISED
IRRIGATION SYSTEMS

WWW.ROTRIXAFRICA.CO.ZA

Page 15



PFERD

HIGH PERFORMANCE, QUALITY
SAFE CUT-OFF WHEELS AND MORE

WWW.PFERD.CO.ZA

Page 23



RUMAX

TRUSTWORTHY
FARMING IMPLEMENTS

WWW.RUMAX.CO.ZA

Page 17



PLAASBESTUURDER

WE MANAGE YOUR RECRUITMENT
PROCESS SO YOU CAN
FOCUS ON YOUR FARM

WWW.PLAASBESTUURDER.CO.ZA

Page 13



SAGEWASH SANITIZER

CONTINUOUS FLOW
CLEANSING SYSTEM

WWW.SAGEWASH.CO.ZA

Page 23



PLATINUM TRAILERS

CUSTOM BUILD TRAILERS
AND TRAILER PARTS

WWW.PLATINUMTRAILERS.CO.ZA

Page 24



SAKPRO

PACKAGING SOLUTIONS
FOR FRESH PRODUCE

WWW.SAKPRO.CO.ZA

Page 30



PPECB

PERISHABLE PRODUCTS
EXPORT CONTROL BOARD

WWW.PPECB.COM

Page 51



SENER360 TECHNOLOGIES

IRRIGATION SYSTEMS
PERFECTED

WWW.SENER360.CO.ZA

Page 23



PRO LINING

SUPPLY AND INSTALLATION
OF GEOSYNTHETIC MATERIAL

WWW.PORLINING.CO.ZA

Page 16



SOYGRO

LEADERS IN MICROBIOLOGICAL
PLANT AND SOIL INOCULATES

WWW.SOYGRO.CO.ZA

Page 07

CONTENTS

SPECK X

SPECK PUMPS

WATER MAINTENANCE
MADE EASY

WWW.SPECK-PUMPS.CO.ZA

Page 25



TAL-TEC

LIVESTOCK HANDLING
EQUIPMENT

SALES@TALTEC.CO.ZA

Page 36



THE SOUTHERN AFRICAN GRAIN LAB

INDEPENDENT ISO/IEC 17025
ACCREDITED LABORATORY

WWW.SAGL.CO.ZA

Page 13



TOPCON AGRICULTURE

PRECISION AGRICULTURE

WWW.TOPCONPOSITIONING.COM

Page 47



VDW ENGINEERING

YOUR ONE-STOP CATTLE
HANDLING EQUIPMENT SUPPLIER

INFO@VDWENGINEERING.CO.ZA

Page 21



WES-TRANVAAL SPUITPARTE

PARTS FOR SPRAYERS & PUMPS

SPUITPARTE@GMAIL.COM

Page 53



WIKKIE'S POMPE

OUR SERVICE IS OUR PRIDE

WIKKIE@WIKKIESPOMPE.COM

Page 20



WORLD FOCUS AGRI

PRODUCTS THAT ACT AS AN
ORGANIC GROWTH STIMULANT

WWW.WORLDFOCUSAFRICA.CO.ZA

Pages 44-45



YARA ANIMAL NUTRITION

HIGH QUALITY PHOSPHATE PRODUCTS
SUITABLE FOR BOTH RUMINANTS AND
MONOGASTRIC ANIMALS

WWW.YARA.CO.ZA

Pages 27 & 41

AGRIFOODSA PRESENTS AGRIHOW™

Developing future farmers in SA... just a click away!

Healthy, sustainable, and inclusive food systems are critical to achieving the world's development goals. Agricultural development is one of the most powerful tools to end extreme poverty, boost shared prosperity, and feed a projected 9.7 billion people by 2050. Growth in the agriculture sector is two to four times more effective in raising incomes among the poorest compared to other sectors.

We have introduced a new platform to educate and empower farmers, more specifically small-scale and student farmers, in the form of regular AGRIHOW™ in-depth articles addressing pressing issues in the industry, current affairs, development in agriculture and AGRIHOW™ TO instructional guides.

We are offering value-added publicity and promotion opportunities to all our sponsors and writers in terms of the informative content and advertising opportunities linked to these know-how articles. Healthy, sustainable, and inclusive food systems are critical to achieving the world's development goals. Agricultural development is one of the most powerful tools to end extreme poverty, boost shared prosperity, and feed a projected 9.7 billion people by 2050. Growth in the agriculture sector is two to four times more effective in raising incomes among the poorest compared to other sectors.

We have introduced a new platform to educate and empower farmers, more specifically small-scale and student farmers, in the form of regular AGRIHOW™ in-depth articles addressing pressing issues in the industry, current affairs, development in agriculture and AGRIHOW™ TO instructional guides.

BECOME A SPONSOR!

CONTACT US TODAY
for tremendous
value added offerings.

WWW.AGRIFOODSA.INFO
info@agrifoodsa.info
+27 (0) 12 997 3407

Soygro Soygro Soygro



Morné de Villiers
083 792 1908

Elizna van der Merwe
083 792 1909

Andries Nienaber
083 792 1910

SOYGRO (PTY) LTD
Berts Bricks Road nr. 7,
Mooibank, Potchefstroom.
E-mail: soygro@iafrica.com
Web: www.soygro.co.za

TOP FARMERS USE SOYGRO NOCULANTS!



THE RAINMAKER

www.reinke.com

Patrick Ellis | +27 (0)31 350 4525 | patrickellis@reinke.com



IRRIGATION SURVEY & DESIGN (PTY) LTD.

MEMBER OF THE SAI
SNE ACCREDITED

SERVING THE AGRICULTURAL COMMUNITY WITH PRIDE!

24 YEARS OF EXPERIENCE



IRRIGATION SURVEY & DESIGN (PTY) LTD.
MEMBER OF THE SAI | SNE ACCREDITED



Irrigation Survey & Design (PTY) Ltd was founded in 1999 and to date multiple developments was surveyed, designed and supplied with irrigation equipment. This includes the whole of Limpopo, KwaZulu Natal, North-West, Northern Cape provinces and internationally namely Namibia, Zimbabwe, Botswana, Zambia and Nigeria.

After 12 years they have taken on a long-term contract which was funded by Norwegian capital and Finland. Turn-key projects for LADEP was undertaken as community projects in the Thoyondou/Vuwani area.

Specialists in the field of:

- Environmental impact studies
- Dam designs
- Geo-hydraulic studies and
- Hydraulic studies.

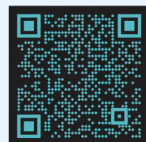
Everything that is needed to help the client apply for his license.

OUR SERVICES INCLUDE THE FOLLOWING:

SURVEY & DESIGN OF ALL IRRIGATION SYSTEMS, DAM DESIGN REGISTRATION, DAM SEALS AND ALL WATER RELATED STUDIES.

- Micro & drip designs
- Centre Pivot designs
- Pump stations, structural designs and fabrication
- Greenhouse and Irrigation designs
- Overhead Irrigation Systems (Tinkie)
- Electrical Designs

- Underground Drip Irrigation designs (SDI)
- Fertigation Application Systems designs
- Evaluating Irrigation Systems
- Automatization
- Turn-key Projects
- DWS WULA Applications



© MES CON SA

WWW.IRRIGATIONSURVEYANDDESIGN.CO.ZA

+27 (0) 71 239 0327 | Email: info@irrigationsurveyanddesign.co.za

► Commercial Banking

Make Nedbank Agriculture your next big move.

Nedbank Agriculture has the knowledge and expertise to guide you through the opportunities and challenges your agribusiness experiences. Our team offers innovative, specialised and sustainable solutions to support your growth.

Think bigger. Think Nedbank Commercial Banking.

For more information about our solutions, scan the QR code.



see money differently

Nedbank Ltd Reg No 1951/000009/06. Licensed financial services and registered credit provider (NCRCP16). T&Cs apply.



We're stronger together – how collaborating with the right partners can help the agrisector thrive.

Despite South Africa's agricultural value chain, which contributes between 10% and 12% to the country's overall economic output and being fraught with challenges, it still offers immense opportunity.

The sector is one of the few that have thrived since the Covid-19 pandemic because of high crop prices and demand as well as high export activity, with agricultural exports reaching a new record of \$12,8 billion (R234 billion) in 2022. But relentless Eskom blackouts, higher interest rates, poor infrastructure, service delivery failures, geopolitical tensions and now the government's controversial draft water regulations are pushing the sector to the brink. According to Stats SA, agricultural output fell by a substantial 12,3% in the first quarter of 2023, and the latest Agbiz/IDC Agribusiness Confidence Index has recorded the lowest reading for the past two quarters since the second quarter of 2020.

While many of these challenges are out of the sector's hands and require a sincere commitment by the government to rebuild the economy and a systematic approach to achieve this, the players in the sector need to find ways to manage the complexities within their control. John Hudson, Head of Agriculture at Nedbank Commercial Banking says that one of these ways is to seek out the right partnerships to support and help them grow. 'Choosing the right financial partner is particularly important in helping agribusiness owners navigate the ups and downs of this challenging environment and support their long-term growth aspirations.'

'At Nedbank, our agricultural specialists have a deep passion for the sector and by taking a long-term view and applying a relational, client-centred approach, we're able to gain a full understanding of the unique risk drivers and mitigation strategies of agribusinesses. Combining this with client-specific pain points and needs, we can design sustainability-focused solutions that are underpinned by Nedbank's overarching purpose to do good for individuals, families, businesses and society,' he says.

Hudson adds that Nedbank is deeply committed to contributing to a growing, competitive, transformed and climate-resilient agricultural sector, which is why they are among the market leaders in financing sustainable solutions across the entire value chain. 'Incorporating sustainable business practices into growth plans ensures that clients make a meaningful impact on the economy and environment while also remaining competitive and relevant.'

In collaboration with its many sustainable solution partners, Nedbank has developed affordable financing across a spectrum of requirements, including energy security, water efficiency, shade netting, waste and recycling, soil health and sustainability finance. 'Our tailored sustainability funding enables clients to prioritise and implement structures to improve efficiencies in their businesses. Among others, we offer extended terms matched to the payback period of financed equipment, cash flow neutrality where future cash flow improvements are considered, and opportunities to qualify for tax incentives.'

Aside from enabling a growing and resilient agribusiness, Nedbank partners with its clients to ensure that their legacy remains intact for many generations to come. 'We help guide growth by unlocking the right funding to suit each client's requirements and circumstances, whether for diversification, market expansion, investment, or transformation and inclusive growth purposes. And by offering effective ways to sustain their cash flow requirements to strengthen their capacity to respond to seasonal and cyclical changes, we enable our clients to minimise potential adverse effects on their bottom line.'

Hudson says that this holistic approach, together with leveraging technology to its full extent and harnessing the power of the right partnerships, means that Nedbank can cater to the evolving needs of our rapidly changing agricultural sector. 'We believe that, together, we can achieve more. That's why we partner with leading stakeholders in the sector, like WWF-SA, Agrico, SA PALS, neXgro and Hohm Energy to gain insight into on-the-ground challenges and opportunities to unlock the full potential of South Africa's food value chain.'

**Think bigger.
Think Nedbank Commercial Banking.**

Email us at agriculture@nedbank.co.za to find out more.

NEDBANK



SAFIRI

*Designed for both indoor
and outdoor working conditions.*

INTERCEPTOR®
GREAT COMFORT. BETTER SAFETY.

MANUFACTURED BY **HI-TEC®**



waar Boere verseker is
van kwaliteit kandidate
en kandidate verseker
is van volhoubare
Loopbaangeleenthede.

plaasbestuurder.co.za



***Plaasbestuurder.co.za behartig jou
boerdery se werwingsproses, sodat
jy 100% op jou boerdery kan fokus.***



www.plaasbestuurder.co.za



Vernon – 082 779 7788



www.facebook.com/plaasbestuurder.co.za



"The whole of anything is greater than the sum of its parts"
- Gestalt



**OFF-ROAD CAMPING TRAILERS
AND 4X4 ADVENTURE PRODUCTS**

SALES ENQUIRIES:

+27 (0) 23 342 3438 | +27 (0) 82 442 1648
www.bushwakka.africa | info@bushwakka.africa

SAGL
Visit our website
for the latest
Crop Quality Reports



The Southern African Grain Laboratory NPC



Crop Protection Division

The Southern African Grain Laboratory NPC is an independent ISO/IEC 17025 accredited laboratory, acting as reference laboratory for the South African Grain Industry.

The **Crop Quality Division** focus on grain and oilseed quality analyses:

- Grading & Milling
- Nutritional analyses
- Rheology & Baking
- Vitamins, Minerals & Amino Acids
- Mycotoxins

The **Crop Protection Division** is also ISO/IEC 17025 accredited and OECD GLP Compliant for analyses on plant protection products:

- 5-batch testing
- shelf-life testing
- quality control

OUR LOCATION

The Grain Building,
Agri-Hub Office Park
The Willows, 0040

GENERAL ENQUIRIES

CPD Email: info.cpd@sagl.co.za
CQD Email: info@sagl.co.za
www.sagl.co.za

CONTACT US

Tel: +27 (0)12 807 4019
Fax: +27 (0)86 216 7672



We understand digital indicators, and your unique application, **PERFECTLY!**



Loadtech instruments have a range of locally developed process and load cell instruments from panel mount, din rails and wall mount type instruments.

Our Digital Indicator range can display process parameters such as: mA, millivolts, frequency, counting, potentiometer, even timer, real-time clock, manual analog out station and load cell applications.

We also have a range of remote displays and extra-large displays.

Call us now for quality, locally manufactured solutions that work!

LOADTECH
LOAD CELLS

Leaders in quality load cells &
weighing technology

Tel: +27 (0)12 661 0830
email: sales@loadtech.co.za
www.loadtech.co.za

PRESS RELEASE



FERTASA

Fertilizer Association of Southern Africa

WWW.FERTASA.CO.ZA

ACTION NEEDED

TO SERVICE EXPECTED FERTILIZER DEMAND

by Dr Pieter Haumann, CEO, Fertasa

It was noted at the annual Grain SA – Fertasa planning meeting for the coming summer crop season, that fertilizer imports in 2023 were slower than in previous years.

FERTASA FERTILIZER IMPORTS

Month	2022	2023
January	51 921	35 600
February	96 662	98 839
March	96 774	36 833
April	135 915	129 514
May	196 639	124 544
June	219 934	78 867
YTD	797 845	504 197

This was probably due to uncertainty of when falling international fertilizer prices would reach their low benchmark and waiting for grain prices to increase.

Both of the above have happened! The latter is due to the cancellation of the Black Sea contract. Additionally, a larger-than-average maize yield is expected.

The above factors and the fact that Grain SA are motivating Producers to rather buy their fertilizer earlier than later will most probably lead to a rapid increase in fertilizer demand.

Fertilizer companies are therefore urged to finalize orders for their usual imports to avoid fertilizer shortages later this year.

Transnet is urgently requested, as in 2022, to give the necessary priority to the unloading of fertilizer at the ports of entry to allow rapid flow of the expected fertilizer imports.

FERTASA

Fertilizer Association of Southern Africa

+27 (0) 12 349 1450

general@fertasa.co.za



IMPAC

CropSure

IS JOU GRANE VERSEKER?

Niemand kan die toekoms voorspel nie,
maar ons kan dit vir jou beskerm

INKOMSTEWAARBORG

Hierdie versekeringsprodukt is gegrond op 'n gewaarborgde inkomste en verseker die produsent teen randwaarde per hektaar.

Twee veranderlikes word dus tydens eise in berekening gebring naamlik: Prys (SAFEX) en Opbrengs (Ton/ha). Dekking is vir Miellies, Sonneblom en Sojabone.

WATTER SOORT SKADE WORD GEDEK?

Droogte, Brand, Hael, Transito, Oormaat Reën, Onbeheerbare plantsiektes en -insekplae, Oormatige hittegolwe en Ryp.

IS ALLEENSTAANDE HAELDEKKING BESKIKBAAR?

Ja, IMPAC CropSure bied ook alleenstaande haelversekering.

GEWASSE HIERONDER GEDEK SLUIT IN:

Miellies, Graansorghum, Sonneblom, Sojabone, Droëbone, Grondbone, Aartappels en Katoen.

WAT IS WINTERGEWASSE?

Koring, Gars en Hawer.

WATTER SOORT SKADE WORD GEDEK?

Hael, Brand en Transito, asook Ryp indien ingesluit.

Vir meer inligting kontak u agent of
IMPAC CropSure:

+27 [0] 12 010 0697

info@impaccropsure.co.za



ROTRIXAFRICA

industries cc

MECHANISED IRRIGATION SYSTEMS

BUILT TO IRRIGATE AFRICA



WWW.ROTRIXAFRICA.CO.ZA

ANDRIES BOTHMA

+27 (0) 79 959 3356 | sales@rotrixafrika.co.za



NEED A TEAM THAT GIVES A DAM?

**SUPPLIER AND INSTALLER OF
GEOSYNTHETIC MATERIAL**

PROlining is a company committed to excellent quality and service delivery at affordable prices. We perform duties to the highest quality and standards while working closely with our clients towards a common goal.

Established in 2018 and continue to grow from year to year. We are currently distributing our products throughout Southern Africa and neighbouring countries.



CALL THE SPECIALISTS TODAY!



Lee-Roy:
+27 (0) 82 048 8545
lee-roy@prolining.co.za

Kobus:
+27 (0) 61 548 8712
kobus@prolining.co.za

Dream to lead the FUTURE!

WE SPECIALISE IN:

- Pollution control dams
- Earth dams
- Leachate ponds
- Landfills
- Bund areas
- Concrete reservoirs
- Channels

WE SUPPLY:

- HDPE membranes
- HDPE pipes
- Protection and separation geotextiles
- Reinforcing grids and nets
- Geocells
- GCL'S
- Gabions

WWW.PROLINING.CO.ZA



**MANUFACTURERS AND SUPPLIERS
OF AGRICULTURAL SPRAYING EQUIPMENT**



Denis de Gruchy | +27 (0) 23 347 7704 | +27 (0) 72 906 6661 | agrispray2@gmail.com



VERVAARDIGER VAN:



- Awegare
- Kerwers
- Pilmasjiene
- Voermengers
- Misstrooiers
- Hamermeule
- Meganiese
- Snoeilemme

☎ 023 342 6070 🌐 www.rumax.co.za 📍 Samuel Walters Straat 1, Worcester



AGRIDOME

Dome shelter structures

It makes economic sense



CREATE INSTANT SPACE WITH THE INNOVATIVE AGRIDOME SHELTER. UNDERCOVER AREAS NOW OFFER MORE OPTIONS COMPARED TO CONVENTIONAL SHELTERS IN TERMS OF SHADE, NATURAL LIGHT AND PROTECTING YOUR FARM'S ASSETS AGAINST WEATHER CONDITIONS.

STRUCTURES FOR LIVESTOCK

• Cattle Structure

Agri Dome cattle structure are designed with your productivity and profits in mind — by people who understand the cattle industry and know your requirements.

• Cow/Calf Structure

A cow/calf structure is a great way to expand your herd without purchasing expensive land, help you to keep track of daily health concerns, increase your bull/cow ratio, promote early weaning, as well as gaining an extra two to three calves per cow due to increased longevity.

• Dairy Structures

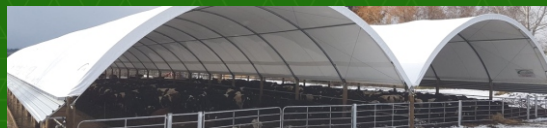
Agri Dome fabric dairy structures are designed to provide the optimal environment for your cattle to maximize your profits.

• Sheep Housing

Agri Dome sheep housing is designed to keep your sheep safe and out of the elements. It is important to have some sort of sheep housing on your farm to allow a safe and controlled environment for your flock.

• Swine Structures

Are you looking to construct a shelter for your hogs? Agri Dome Fabric Covered Structures specializes in swine housing. Our swine housing is designed to be extremely versatile, giving you the option to add barriers, stalls, end doors, and more.



AGRICULTURAL STRUCTURES

• Grain Storage Structures

Agri Dome's fabric grain storage structures are engineered to meet every grain storage requirement while providing maximum strength and versatility.

• Equipment Storage

Agri Dome equipment storage structures are an ideal choice for virtually any industrial structure need. Whether you need a structure for cold storage, bulk storage, or warehousing, our equipment storage structures can match your requirements.

• Hay Storage

When it comes to hay storage and feeding operations, Agri Dome has the perfect structure to suit your needs. We place a high value on protecting your commodities to increase your profit and benefit your business. Our structures are designed to protect your feed commodities from wind, rain, sun, or snow while maintaining its nutritional value, and reducing your product shrink.

• Commodity Storage Structures

Agri Dome commodity storage structures are versatile and loaded with features that conventional structures lack. With real air movement, flexible clear span structure space, and a more consistent environment.

• Fertilizer Storage Structures

If you are looking for a fertilizer storage structure that is versatile, easily accessible, and extremely durable. Our fabric storage structures provide unique advantages over your typical post frame or steel structure – increasing your profits and productivity.

086 100 1010



Speak to one of our storage experts

SALES@AQUADAM.CO.ZA | WWW.AQUADAM.CO.ZA

A DRIVING FORCE FOR YOUR FARM

for more than 67 years



0860 12 00 12

 www.willard.co.za



Willard Batteries®
THE POWER OF TECHNOLOGY

WIKKIE'S POMPE



SOLAR POMPE IS DIE DRUK WERD

**NA 30 JAAR IS ONS
DIENS STEEDS ONS TROTS!**



© MES CON SA



DIENTE EN PRODUKTE

Ons voorsien en installeer:

- Solar boorgat pompe
- Solar booster pompe
- Solar swembad pompe
- Boorgat motors
- Waterversagting sisteme
- Waterontkalking sisteme
- Ultra violet filtrasie sisteme
- Swembad toebehore

Kontak Wikkie:

+27 (0) 12 333 8722 | +27 (0) 82 376 3890

wikkie@wikkiespompe.com | sales@wikkiespompe.com

POTABLE WATER TANKS

Supplied with a certificate

4 x 2.3 m Zinc Tank (29 kl) - R 25 200

6 x 2.3 m Zinc Tank (65 kl) - R 41 700

8 x 2.3 m Zinc Tank (116 kl) - R 62 100

ZINC RESERVOIRS

4 x 2.3 m Zinc dam (29 kl) - R 18 600

6 x 1.55 m Zinc dam (44 kl) - R 21 700

6 x 2.3 m Zinc dam (65 kl) - R 28 400

8 x 2.3 m Zinc dam (116 kl) - R 38 600

12 x 2.3 m Zinc dam (261 kl) - R 77 800

14 x 2.3 m Zinc dam (354 kl) - R 98 400

PRICES INCLUDE:

- Roof
- Zinc
- 50 mm Outlet
- Food grade dam liner
- 50 mm Overflow
- Installation and VAT

DELIVERY NOT INCLUDED

PRICES INCLUDE:

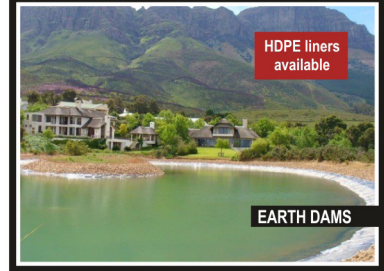
- Zinc
- Dam liner
- 50 mm Outlet
- 50 mm Overflow
- Installation and VAT

DELIVERY NOT INCLUDED



Reservoirs
up to 522 kl

ZINCAL DAMS - RESERVOIRS



HDPE liners
available

EARTH DAMS

DIY DAMS ALSO AVAILABLE | 10 YEAR WARRANTY*

Any size ZincAl dam, grain dam, ZincAl tank or lining can be manufactured on request. 0.8mm to 1.2 mm ZincAl sheets with a life expectancy of 2 - 4 times longer than that of traditional sheets are used. 850 GSM PVC linings are manufactured with the aid of a high-frequency welding process. Linings are UV resistant. Material of the same thickness is used for the walls and the floor. Should the thickness differ, you get your lining free. *Terms and Conditions apply.

WE WILL BEAT ANY WRITTEN QUOTATION!

Jannie: +27 (0) 72 600 0179 | Boet: +27 (0) 82 496 1934 | Office: +27 (0) 76 307 7573
Email: sales@nwdamme.co.za | Website: www.nwdamme.co.za



YOUR ONE-STOP CATTLE & SHEEP HANDLING EQUIPMENT SUPPLIER

WE ALSO SUPPLY A WIDE RANGE OF OTHER AGRICULTURAL EQUIPMENT

NATIONWIDE DELIVERY!



Hennie van der Walt
+27 (0) 72 901 4033
info@vdwengineering.co.za



- Mobile crush and neck clamps
- Cattle neck clamps
- Standard & mobile loading ramps
- Loading ramps & panels
- Enclosure panels
- Gated enclosure panels
- Feeding troughs
- Work stations
- 2 Way sorting gates
- Support arches
- Support arches with gate
- Weigh bars
- Spray race
- Branding irons
- Bale rings
- Scales



YOUR PACKAGING IS OUR PRIDE

LANDPAK



BRITS BAG MANUFACTURERS



INTERNATIONAL BAG BUYERS

Shade Netting
Pallet Wrap
WPP Bags
Bulk Bags

Agricultural Packaging
Fruit & Veg Packaging
Nursery Products
Twines/Baaltou
Block Bottom Bags
and over 5000 other products!

Strapping
Fomo's
Tapes
Boxes



WHATSAPP NO:



082 459 3808

012 250 0120

WHATSAPP NO:



079 672 2331

BRITS BAG MANUFACTURERS
35 PIET RAUTENBACH STR, BRITS

INTERNATIONAL BAG BUYERS
30 PIET RAUTENBACH STR, BRITS

Jou **SENER 360** is aanlyn...is jy?

Sener 360
TECHNOLOGIES

>>> JY VERTROU ONS REEDS OMDAT ONS...

- Die sterkste struktuur in die industrie het
- Die betroubaarste produk het
- Die beste sprinkelpakkette het

Vir die beste diens kontak ons by +27 (0)18 469 1331 of +27 (0)82 564 5955 of www.senter360.co.za

Terme en voorwaardes geld
Ons standaard beheerstelsel het **omvattende sel/internet kommunikasie...**
Geen maandelikse/jaarlikse koste **[GRATIS!]**

Sagewash
THE ULTIMATE LOW PRESSURE DISINFECTANT SYSTEM

Continuous Flow Cleansing System
Connect to a Standard Hosepipe and Water Tap

SABS Tested SANS 51276
European Standards Tested EN1276 EN1650 and EN1656

Kills bacteria and viruses effective against algae and mould

Protect against:

- E-Coli • MRSA • Salmonella • Streptococcus • Swine Flu
- Avian Influenza • Listeria • Legionella • Bovine Coronavirus
- FMD • Clostridium Perfringens • Clostridium Difficile
- Parvovirus – canine and feline • Herpesvirus – canine and feline
- Canine Parainfluenza • Canine Distemper • Canine Adenovirus
- Feline Calicivirusand more

sagewash.co.za **f Sagewash SA**

Adam Potgieter
+27 (0)82 446 6961

Gary Worthington
+27 (0)82 808 2101

HIGH CUTTING PERFORMANCE & MAXIMUM ECONOMIC EFFICIENCY

Thin cut-off wheels from **PFERD**



TRUST BLUE

THERE IS NO SUBSTITUTE FOR QUALITY AND SAFETY

PFERD



www.pferd.com

- Range of material-specific thin cut-off wheels
- Long service life
- Minimised burr formation and heat generation



Contact **PFERD-South Africa** for further information:
Tel: +27 11 230 4000 | E-Mail: info@pferd.co.za | Website: www.pferd.co.za



1000L Diesel Bower Trailer
R38 500 + vat



Sheep / Cattle Trailer Combination
R69 800 + vat



6 Ton Farm Trailer
R75 500 + vat

PLATINUM TRAILERS CC

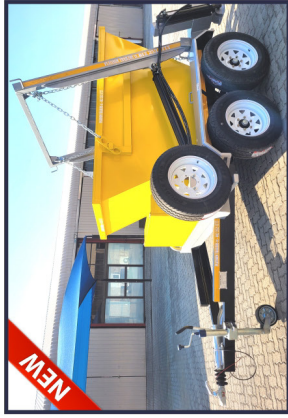
**WIDE VARIETY OF CUSTOM BUILD TRAILERS
& TRAILER PARTS AVAILABLE**

Contact Us: +27 (0) 12 252 1777

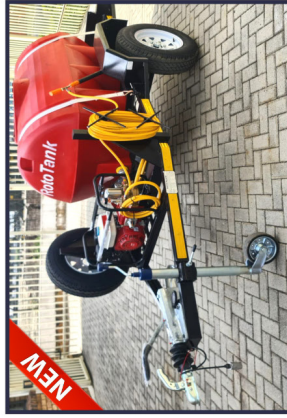
Franco: +27 (0) 82 078 9384 | Lorraine: +27 (0) 72 887 3300

Email Us: info@platinumtrailers.co.za

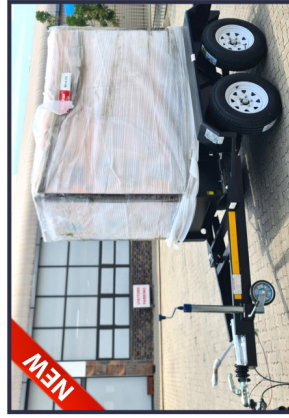
4B Theuns Mulder Str, Industrial, Brits



Skip Bin Trailer met 'n 2cube bin
R128 500 + vat



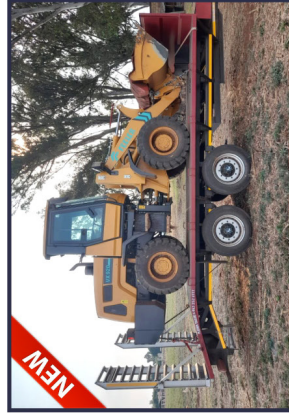
1000l Fire Fighter Trailer
R45 500 + vat



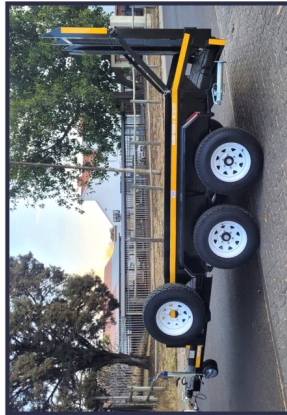
Generator Trailer – Without the generator
R45 500 + vat



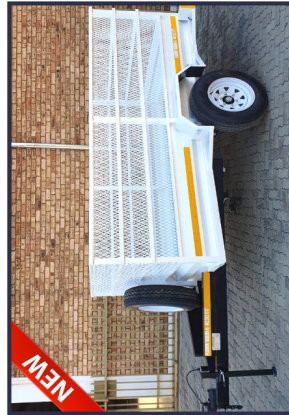
Game Trailer
R95 000 + vat



TLB Trailer
R185 000 + vat



Tractor / Bobcat Trailer
R68 800 + vat



Maxi sides Trailer
R21 500 + vat

Visit our website: www.platinumtrailers.co.za

SPECK X



Side View

Turn sunlight **INTO ENERGY WITH SPECK**

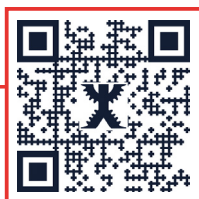
As a leading manufacturer of filtration and circulation systems in South Africa and across the world, our range of reliable units meets the requirements of various Agricultural operations. Our innovative solar solutions can be utilised to make water circulation and maintenance even easier!



Controller



Top View



speck-pumps.co.za

GET IN TOUCH

CAPE TOWN: +27 21 704 1143

DURBAN: +27 31 700 8005

JOHANNESBURG: +27 11 455 4300

PRETORIA: +27 12 804 1294





**WE STRIVE TO GIVE OUR CLIENTS A ONE-STOP WATER STORAGE AND IRRIGATION SOLUTION!
COST EFFECTIVE QUALITY STEEL STRUCTURES**

**AT ALPHA DAMME, WE MANUFACTURE TOP QUALITY PRODUCTS.
RELIABLE SERVICE AND MARKET RELATED COMPETITIVE PRICING IS OUR GOAL.**

- Potable water tanks
- Zinc dams
- Linings for concrete zinc dams
- Firefighting water storage
- Agricultural tanks
- Pivot irrigation
- Earth dam liners

OUR SPECIALITIES

Superior quality and flexible linings for all types of dams

Prevention of algae growth

Construction of corrugated and mesh wire dams

**ZINC DAMS
WATER TANKS
PLACE ORDERS
TODAY!**

We manufacture any size of zinc dams or linings on request.

Our liners are suitable for potable water tanks, a wide range of chemicals and liquid fertilisers.

We deliver nationwide, as well as to neighbouring countries.

Alpha Damme provides a 10 year warranty against faulty material and/or workmanship on all products.



OFFICE: +27 (0) 18 000 5162 | RULIE: +27 (0) 84 690 5525 | CINDY: +27 (0) 72 227 5522
rulie@alphadamme.co.za | alphadamme@gmail.com



We service and supply crop spraying drones

WHO WE ARE:

We are renowned for building dams since the 1940's

We are well known in the agricultural sector, doing ripping, gravel roads, bush clearing, levelling of the fields for better drainage.

We also do bulk earthmoving with our Bell scrapers which provides a one-machine operation that makes the project very cost effective.

We believe that the farmer always comes first. That means custom solutions tailor made for each farm!

WE DO THE FOLLOWING SERVICES:

- GPS RTK Land levelling
- Supply and support FJ Dynamics levelling systems
- Earth dams – Design and building
- Ridging • Drainage • Row beds
- Water management planning
- RTK Topographic survey
- Dirt road / runway building
- Agricultural Crop Spraying Drones – Supply and service
- RTK Ditching to control ponding in lands.

OPERATING NATIONWIDE! BASED IN TARTLTON, KRUGERSDORP.

CONTACT US

WWW.JDHOFFMANEARTHMOVING.CO.ZA


DEVILLIERS: (082) 896 - 7950

E-MAIL: diwie@mweb.co.za

<http://agrifoodsa.info/directory/jd-hoffman-earthmoving-cc>

WELD ANYTHING, ANYWHERE

WITH REBEL™ EMP 235ic



EMP 235ic –the next series of Rebel welding machines that offer TRUE multi-process performance in a portable/mobile package. When it comes to getting around and getting work done, Rebel 235ic is second to none. It's the most mobile welder in its class and has the power and performance to crush even the most demanding jobs.

TURBOTORCH

ESAB | WWW.ESABSA.CO.ZA

JHB +27 (0) 745 9749 salesjhb@esabsa.co.za
 DBN +27 (0) 745 9749 salesdbn@esabsa.co.za
 PE +27 (0) 745 9749 salespe@esabsa.co.za
 CPT +27 (0) 745 9749 salescpt@esabsa.co.za



Knowledge grows





Bolifor® Magnesium Fosfaat met swael (MGP+)

- 24% Magnesium en 13.5% fosfaat met bygevoegde swael (2%)
- Baie lae kalsiuminhoud (1%)
- Korrelvorm maak dit vryvloeiend en stofvry
- Uitstekende biologiese beskikbaarheid van beide Mg en P
- Bron van swael vir rumen mikrobies

Innoverende oplossings in dierevoeding!

www.yara.co.za/animal-nutrition/

animal.nutrition.sa@yara.com | Tel: +27 (0)31 910-5100

Bolifor® MGP+ - Reg. Nr. V30204. Alle produkte geregistreer onder Wet 36 van 1947. Yara Animal Nutrition Suid-Afrika (Edms) Bpk. Reg. Nr. 2001/025850/07



VERSKAFFERS VAN CCA EN KREOSOOT BEHANDELDE PALE, LATTE & SPARRE

GEBRUIKE:

- Hael en skudunette
- Wingerde
- Krale en kampe
- Wilds- en beesheinings
- Wildsbomas
- Grasdakke
- Krag- en kommunikasie lyne

Koop direk vanaf die vervaardiger met meer as 22 jaar se ondervinding. Met 20 000 ton se voorraad kan enige bestelling groot of klein, vining en effektief gelewer word. Ons lewer ook 'n verskeidenheid gesaagde hout- en huisverbeteringsprodukte. Op ons perseel het ons ook 'n hardewarewinkel waar u al die basiese behoeftes vir u projek maklik kan koop. Ons kundige personeel sal advies gee oor u navrae en u help om die regte materiaal en gereedskap aan u te verskaf.

www.britspoles.co.za



Kontak: Alicia Brink

+27 (0) 12 944 7060 | +27 (0) 76 840 2482

alicia@britspoles.co.za

Ons lewer af in enige land. Afslag op volume beskikbaar.



Rustenburg Depot

Old Northam Pad
Boitekong
Langs Lusaka Crushers
Rustenburg

Willie Coetzee +27 (0) 74 248 2719

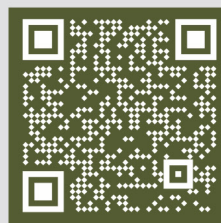
Lethabile Express Depot

OK MiniMark & Puma Best
End Brits Diensstasie

Marius Pottas +27 (0) 72 880 2195

Western Cape Depot

Tevrede Plaas
R60, Overhex
Skuins oorkant Pampoen Padstal
Worcester
Jo van Der Spuy + 27 (0) 76 840 2158

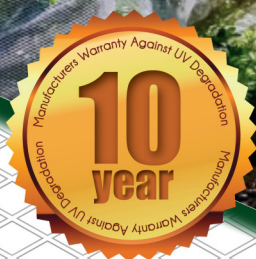


Knittex®

Since 1964

© MES CON SA

www.knittex.co.za



SpectraNet



**YOUR WORLD
LEADERS IN
QUALITY AND SERVICE**

MANUFACTURERS OF KNITTED
AGRICULTURAL AND DECORATIVE

SHADE NETTING

Knittex manufacture a wide range of products tailor-made for the Agricultural and Industrial Sectors, Aquaculture, Cordage, Domestic, Building & Construction, Civil & Mining, Fishing and Retail!

Knittex has built up a reputation for reliability and quality in all the markets it serves as a result of the expertise of a well-established sales team, with unrivalled product knowledge and an in-depth understanding of its application.

All Knittex products are made to exact specifications and can be supplied stentered or unstentered depending on the application and client needs.

Superior quality materials which withstands the harsh sun and rain conditions of South Africa!



+27 (0) 11 692 1658 | clientliaison@knittex.co.za





KNITTED FRUIT & VEGETABLE BAGS



www.sakpro.co.za

CUSTOMERS SATISFACTION IS OUR PRIORITY AND QUALITY IS OUR AIM

+27 (0) 13 751 2376 | SALES@SAKPRO.CO.ZA



ALLPROOF COATINGS

MANUFACTURERS OF QUALITY PAINTS, COATINGS AND SEALANTS

BUTYLSEAL BUILDING

20A Staal Street, Kya-Sand, Gauteng, South Africa
Tel:011-462-1840 E-mail:sales@allproof.co.za

RUBBERGUARD®



WATER-BASED, NON-SLIP
PROTECTIVE COATING

BRUSH-ON  SPRAY-ON 



TRUST™

3 IN 1

**RUST CONVERTER
RUST AND METAL PRIMER
METAL PROTECTOR**



FOR MORE AWESOME HIGH QUALITY PRODUCTS MADE IN
SOUTH AFRICA VISIT US AT www.allproof.co.za OR PURCHASE
THESE PRODUCTS IN STORE AT ADENDORFF MACHINERY MART

KRP

KRUREKPRO FIRE EQUIPMENT

WWW.FIREFIGHTINGEQUIPMENTS.CO.ZA



CONSULTING WORK | DESIGNS | DEVELOPMENT AND MANUFACTURING
FIREFIGHTERS | FIREFIGHTER SERVICES



+27 (0) 18 290 9520 | +27 (0) 18 290 5228 | +27 (0) 18 290 9407
+27 (0) 82 444 1605 (Dala) | +27 (0) 82 859 7187 (Brenda)
krurekpro@lantic.net



No matter what the adventure, or how many of your buddies are joining, there should always be one particular Buddy who tags along.

The BuddyCool range is known for having the best cooler boxes in South Africa, with impressive durability, premium performance, and maximum convenience.



KEEPING IT REAL COOL...



Contact us for your nearest dealer

018 293 1827 | b-cool@buddycool.co.za | www.buddycool.co.za

SEAL EARTH DAMS EASILY



SAVE WATER, TIME & MONEY!



ONE HECTARE can be treated within **ONE** day with a drone

DO IT YOURSELF
easy application

EXPANDS up to 300 times its original size

KEEP the water

KEEP natural appearance

SPOT treat specific areas

PERMANENT solution

NO heavy equipment required

NOT labour intensive

SAFE for animals, fish and plants

SAFE for irrigation systems

HOOF resistant

ECO-friendly

NON-toxic

SAVE lots of time
(one day treatment vs. months repairs)

SAVE on electricity / fuel costs
to pump the water out and
back into the dam

SAVE on fuel costs to transport
Bentonite / PVC linings

SAVE on high labour costs
and labour issues

SAVE on heavy equipment costs



086 199 5036 / WWW.DAMITDAMSEALER.CO.ZA



FERTASA

Fertilizer Association of Southern Africa

FERTASA'S VALUED MEMBERS



Fertasa and its members are committed to the promotion of sustainable soil fertility and enhanced plant nutrition. Member companies and others are encouraged to share their experiences in proven techniques and novel approaches in ensuring social, environmental and economic sustainability for all.



Dr Pieter Haumann, CEO, Fertasa

www.fertasa.co.za



AECI
PLANT HEALTH



AFRIKELP
nurturing growth



**AGRI
LIBRIUM**



AMEROPA



AngloAmerican



ANOREL



AQUASOL
NUTRI



ATLAS
ORGANIC FERTILISERS

ATLAS
ORGANISE MISTOWVE
ORGANIC FERTILISERS



BASTION
Foundation for growth



BIOFERTILITY



**Constantia
Kunsmis**



DFERT



ERWAT
EXCELLENCE IN WASTEWATER



ExperiCo
Agri-Research Solutions



EXPERSE
a division of
AECI
MINING



FERTIVA
AFRICA'S FERTILIZER SOLUTION

WE STAND FOR THE PROTECTION OF
THE SUSTAINABLE USE OF FERTILIZER



LIVESTOCK HANDLING EQUIPMENT

Branding Equipment / Loading Ramps
Water Troughs / Mobile Units
Spray Races / Kraal Sides
Feeders / Clamps
Scales



012 250 2188 

066 299 7939 

sales@taltec.co.za 

Website

Facebook



BOSS

PROPSHAFT BALANCING
CV JOINT CENTRE

WE MANUFACTURE:

- Tractor roofs in any colour
- Tractor canopies in any colour
- Geringhoff .91/36

OUR SERVICES:

- Repair and rebuild of Prop Shafts
- Supplying in CV Joints
- Powder Coating
- Plastic Moulds

NATIONWIDE
DELIVERIES

+27 (0) 18 632 1854 | Gerrie +27 (0) 83 286 8497

Find us on
Facebook

Op en Top Canopies

Gehalte is my uitgangspunt, kwaliteit my trots

Vasherade,
Doelgerig,
Lojaal



South African
NATIONAL PARKS
Honorary Rangers™

'n Persentasie van
opbrengs word
geskenk om
renoster stropery
te bekamp

BESKIKBAAR VIR ALLE
MODELLE TREKKERS

Presisie Pas
Verlengstukke

Koning van Dakkies

NAVRAE BY U NAASTE AFGRI, GWK, NTK, NWK, NORTHMEC, MASCOR, SENWES, TWK EN VKB TAKKE
e-pos : jpdupre@lantic.net

**WE DELIVER ANYWHERE
IN SOUTHERN AFRICA**

**INCREASE SOLAR PANEL
PERFORMANCE BY UP TO 15%**



HYDRASOL

SOLAR NANO COATING

HYDRASOL is a high quality hydrophobic, self-clean nano solar panel coating.

HYDRASOL has very low surface energy, anti-stick character which prevents water, dust and dirt from attaching themselves to the surface.

Any debris that settles on a solar panel will be

blown away by the wind or carried away by water droplets which are strongly repelled from the surface.

The product requires no polishing or buffing. Simply wash off with clean water to produce a hard wearing, reduced stick, easy to clean, hydrophobic surface coating.

The novel breakthrough of HYDRASOL is to co-locate water repelled functional groups alongside active functional groups on nano-structured particles which bond to the resin matrix, giving a tough durable and transparent coating.

The nano-particles are smaller than the

FOR A QUOTE CALL: +27 (0) 18 293 1827 or +27 (0) 83 630 7282

NANOTEK

ULTIMATE COATINGS



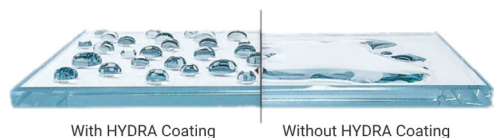
wavelength of visible light and do not scatter light but providing a high degree of transparency.

FEATURES:

- Provides a hydrophobic layer which repels water away from the surface and keeping it dry.
- With a ceramic hardness of 9H+, it provides increased protection against hail.
- Can be applied pre or post installation of the solar panels.
- It is ecologically beneficial and biologically safe.
- It has a durability for up to 10 years.

BENEFITS:

- An easy to clean surface – less dirt and is far easier to clean.
- Optical neutrality of the surface is 100% retained.
- Protects from bird fouling and other heavy soiling sticking to the panel's surface.



NANOTEK.ULTIMATECOATINGS@GMAIL.COM

FRENIC Fuji AC Drives

High Performance Pumping Solutions for Farmers



Benefits

- **10 Year Design Life**
 - IGBT
 - Cooling fans
 - DC Bus capacitors
 - Optimised DC Bus
- **Time Saving**
 - Easy to install
 - Easy to start-up
 - Easy to use keypad
 - Easy to maintain
- **Competitive Pricing**
- **Advanced Energy Saving**
- **Product Installed in IP66 Enclosure**



**Free VSD & Soft Starter Training
in Wadeville Germiston**

THE *DRIVE* BEHIND MAXIMUM PLANT AVAILABILITY



Head Office
011 383 8300

sales@atisystems.co.za
www.atisystems.co.za
159 Galjoen Rd, Wadeville, Germiston

Cape Town Office
021 001 5553

cape@atisystems.co.za
www.atisystems.co.za
Unit 21 Bellray Business Park, Stikland


ATi Systems
Committed to Quality



Knowledge grows



BOLIFOR® MONO AMMONIUM PHOSPHATE (MAP)

Bron van fosfaat en stikstof in lekke en voere vir herkouters

- Hoog beskikbare P bron (26% P)
 - Spaar formulasiespasiae
- Bevat 10% stikstof (62.5% Proteïen ekwivalent)
 - Verlaag die risiko van ureum-vergiftiging
- Korrelvorm maak dit vryvloeiend en stofvry
- Bevat geen kalsium wat dit uiters geskik maak vir areas waar ekstra kalsium in die drinkwater voorkom

Innoverende oplossings in dierevoeding!

www.yara.co.za/animal-nutrition/

animal.nutrition.sa@yara.com | Tel: +27 (0)31 910-5100

Bolifor® MAP - Reg. Nr. V30120. Alle produkte geregistreer onder Wet 36 van 1947.
Yara Animal Nutrition Suid-Afrika (Edms) Bpk. Reg. Nr. 2001/025850/07

upge marketing A29441/A

Silostop

Regular plastic

Global Leader
In Silage
Management

LEADING edge

 **SILOSTOP**
THE ULTIMATE OXYGEN BARRIER FILM

 **THE ULTIMATE
OXYGEN
BARRIER FILM**

100x
MORE EFFECTIVE
THAN STANDARD
PLASTIC COVERS

Andries Engelbrecht: 083 263 9675 | Werner van der Merwe: 083 700 2333

NEPTUN[®]



SAFETY FOOTWEAR

SafeLite



MADE IN SOUTH AFRICA



Nieuwoudt Spray

Head Office
Western Cape & Northern Cape
Nieuwoudt Spray Office +27 22 921 2579 | +27 (0) 64 653 0817
Mias +27 (0) 82 879 9545

WE BUILD CITRUS ORCHARD SPRAYERS FOR YOUR NEEDS



WWW.NIEUWOUDTSPRAY.CO.ZA

GROBLERSDAL | MARBLE HALL
Marbleveld Trekker & Implemente
Dup +27 (0) 82 410 1521

HOEDSPRUIT | NELSPRUIT | TZANEEN
Laeveld Trekker
Alwyn +27 (0) 72 655 0099

POLOKWANE | AFRICA
CityAfrica
Arthur +27 (0) 82 887 3717

RHINO TRAILIES

(051) 448 4842

Louis van Niekerk
+27 (0) 51 448 4842
+27 (0) 51 448 8747
+27 (0) 82 940 5325
louis@trionmf.co.za

STRONG  RELIABLE  TESTED



Steel Rails:

- Rails for Hunting
- Rails for Loading
- Rails for Bakkies
- Rails for Light Transport Vehicles

www.rhinotralies.co.za



AGRICOLLEGES international

educate to grow

www.agricolleges.com

Agricultural education in the palm of your hand!



(+27)63 940 0334
study@agricolleges.com

ONTSLUIT DIE GROEN REVOLUSIE!



World Focus Agri se produkte word gebruik as 'n organiese groeistimulant dwarsdeur die plant se lewenssiklus.

B4999 COMPLEX ROOT

'n Unieke kombinasie van **Organiese sure, Aminosure** en **Ensieme**, vir die verbetering van grondgesondheid, versterking van wortelgroei by plante en saailinge.

Boor(B)...2g/Kg, Magnesium (Mg)...1g/kg

B5089 COA FERTIGATION

'n Unieke kombinasie van spesifieke **Humaat** en **Fulvien** samestellings vir grond en groeimedium aanwending. Spesifiek geformuleer vir optimale ondersteuning van plante-voedingstowwe in die wortelsone.

Stikstof (N)...56 g/kg N, Stikstof (S)...5 g/kg

B4683 CCM

'n Ultrafyn gemikroniseerde **MG/Ca** bron in die **Karbonaat** vorm gemiddelde partikel grootte van 5 – 15Mikron

(1 000 x kleiner as die 80% van Konvensionele Landbou kalk)

Ca...190g/kg, Mg...110g/kg, Organies...30g/kg

B4990 COMPLEX CALSL

'n Ultrafyn gemikroniseerde **Ca** bron in die **Sulfaat** vorm gemiddelde partikel grootte tussen 5 – 15Mikron

(1 000 x kleiner as die 80% van Konvensionele Landbou kalk)

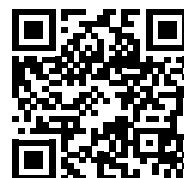
Ca...230g/kg

B4682 COMPLEX CALSL

'n Ultrafyn gemikroniseerde **Ca** bron in die **Karbonaat** vorm gemiddelde partikel grootte tussen 5 – 15Mikron

(1 000 x kleiner as die 80% van Konvensionele Landbou kalk)

Ca...400g/kg, Mg...30g/kg, Organies...30g/k



Kontak ons

082 452 8983 | 083 542 3106
at@worldfocusagri.co.za

Address: 9 Silver Crescent, Delmas, 2210

Ons is almal bekend met die konsep van massa-balans en energiebalans. Enige biologiese sisteem, insluitende ons eie liggame bestaan uit 'n massabalans en energiebalans. In gewasverbouing fokus ons baie energie en koste op die massabalans deel van die plant se behoeftes; die in-balans bring van die grond en/of groeimedium in terme van nutriënte en ander toepaslike aspekte.

Die vraag bly staan hoe kan ons dan die energiebestuur doeltreffend in 'n plant doen? Ons "balanseer" al die nutriënte in die grond, maar die resultate is nie altyd soos verwag word nie. Daar vind nie welige groei plaas nie, patogene kry vastrapplek of skadelike insekte kom besoek die gewasse vir voortplanting. Die opbrengs bly ver agter die genetiese potensiaal van die spesifieke gewas. Die oplossing vir die vraagstuk is doeltreffende energiebestuur in die plant en in die grond.

In die natuur is daar 'n paar sisteme wat die plant ook in staat stel om sy energie beter te bestuur soos byvoorbeeld die effek van metaboliete op die grondlewe. Die sleutel tot sukses lê by sekere sekondêre metaboliete wat organismes afskei.

Soos urease en glomalin, is ETP (Epipoydioxiperizine) ook veronderstel om vrylik in die natuur beskikbaar te wees. Urease is gelukkig nie 'n probleem nie. ETP is 'n ensiem afkomstig van onder meer fungusse soos onder andere trigoderma.

'n Effektiewe sleutel tot plantenergiebestuur lê in die ETP wat die organismes as metaboliete vir die plant teruggee in die simbiotiese verhouding wanneer dit effektief in die rizosfeer aktief is.

Dit is soms moeilik om die die rizosfeer in 'n kommersiële omgewing effektief te kry sodat die lewende organismes genoegsame ETP afskei om die gewenste effek te verkry. Vir die rede kan ETP (Gliogrow) as blaarbespuiting gebruik word om die gewenste effek herhaaldelik te verkry.

Die effek van ETP op die plant is onder meer die volgende:

- Verhoogde wortelgroei aktiwiteit (aangesien die plant nog toegang tot die metaboliet wil verkry)
- Verhoogde ensiem-aktivering vir die plant se metaboliese bestuur en nutriënt-opname
- Verhoging in die konsentrasie van die komplekse plantsuikers/voedingstowwe (Brix)
- Verhoging in die konsentrasie van absesiensuur en plantsapgeleiding
- Verhoogde fotosinteseaktiwiteit;
- Balans tussen fotosintese en respirasie.

PLANT ENERGIEBESTUUR

Artikel geskryf deur: At van Schalkwyk
Bemarkingsbestuurder - World Focus

WWW.WORLDFOCUSAGRI.COM



Kontak ons:
at@worldfocusagri.co.za
+27 (0) 82 452 8983



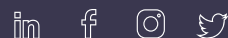
TOUGH AND EFFICIENT

Streamline™ X truly is the toughest thin wall dripline ever made – we checked. Put a dripline in your field that you can trust to do the job required.

Choose Streamline™ X to grow more with less.



An Orbia business.



Find us on social media

Tel: +27 21 987 0477 • infoza@netafim.com • www.netafim.co.za



Reach nutrient balance with Topcon Spreading Control.

With the Topcon application control for dry and granular manure spreader machines, waste and costs are reduced, what gives environmental benefits and yield increases. The **ISOBUS compatible** solution includes optional weight verification and digital farm management (TAP) integration.

Visit www.topconpositioning.com/farm-your-way



Correction
Services



Guidance



Digital Farm
Management



Soil
preparation



Seeding



Crop Care



Harvest



Weighing

TOPCON



FT-NIR SPECTROSCOPY FOOD ANALYSIS

Bruker Optics has the industry's most comprehensive FT-NIR spectrometer product-line:

TANGO:

The next generation FT-NIR spectrometer with touch screen operation and intuitive user interface.

MPA II:

Unrivalled flexibility for your daily QA/QC work as well as for sophisticated method development.

MATRIX-F II:

On-line FT-NIR for direct measurements in continuous or batch processes, enabling a close production control.

FT-NIR is a powerful and effective technology for control of raw materials, intermediates and finished products.

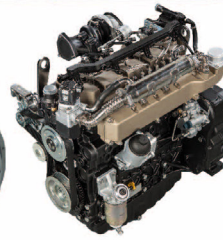
The major application areas of NIR spectroscopy include dairy and meat, beverages, edible oils, bakery ingredients and condiments as well as grains and oil seeds.

In contrast to most wet-chemical and other reference methods, FT-NIR technology is quick, cost-effective, non-destructive and safe, since it does not use chemicals, solvents or gases.

Contact us for more details:

info.za@bruker.com | www.food-analysis-nir.com

Innovation with Integrity



Distributors of Diesel Engines, Generator, Construction Equipment & Heavy Duty Diesel Engine Replacement parts Suitable For:

ADE
BELL
Case
Caterpillar
Cummins
DAF
Dong Feng
FAW
GM Detroit
Fiat
Ford

Gardner
Hatz
Hino (Toyota)
International
Isuzu
Iveco
John Deere
Komatsu
Kubota
Leyland
Lister

Mahindra
MAN
Massey Ferguson
Mercedes
Mitsubishi
MWM
Neuss
Nissan
Perkins
Petter
Renault

RVI (Berliet)
Ricardo
Scania
SDEC
TATA
Vickers
Weichai-Steyr
Volvo
VW Trucks
Yanmar
Yangdong

Johannesburg Head office

Tel: 011 870 5000
ehd@ehd.co.za

Durban

Tel: 031 700 1160
ehddurban@ehd.co.za

Bloemfontein

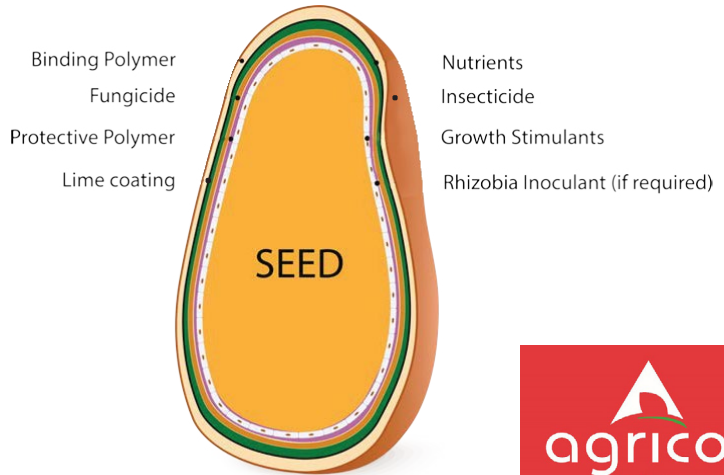
Tel: 051 430 5404
ehdbloem@ehd.co.za

Cape Town

Tel: 021 510 0567
ehdcape@ehd.co.za

Manufacturer's names, numbers, symbols, photos and descriptions are used for reference purposes only and it is not implied that the parts referred to are the products of those manufacturers. Warranty conditions are available on our website www.ehd.co.za

ARE YOUR SEEDS COATED WITH ADVANCED TECHNOLOGY?



- AgriCOTE® Advanced Seed Technology has been in South Africa for over 20 years
- Both field and laboratory research has been performed by independent Universities for the past 15 years
- Continuous development of new coating technology in collaboration with internal partners as well as universities
- AGT Foods Africa have developed our seed coating formulations through trial and error and with international partners
- AgriCOTE® ensures ease of seed placement which makes planting more accurate
- AgriCOTE® boosts seedlings to ensure strong plants
- AgriCOTE® increases the flowability of the seed, making it more compatible with new generation planters
- AgriCOTE® ensures better seed to soil contact
- AgriCOTE® provides protection against biting and sucking insects
- AgriCOTE® promotes precision agriculture

**INSIST ON ORIGINAL AGRICOTE® COATED
SEED FROM AGT FOODS AFRICA OR AGRICOL**

011 762 5261 | www.agtfoods.co.za | sales.za@agtfoods.co.za

AGRICOL PTY LTD POTCHEFSTROOM: 018 294 7470 www.agricol.co.za

AgriCOTE® is a registered trademark in South Africa since 2008. All dissertations are available on request.

Protect Your Crops with Greenhouse Tunnels!

Maximise Yields, Minimise Risks

Are unpredictable weather conditions and pests putting your crops at risk? Say goodbye to sleepless nights worrying about your harvest! Introducing our premium range of Greenhouse Tunnels - the ultimate solution for safeguarding your crops and boosting your yields!



- ✓ Weather Shield
- ✓ Pest Defence
- ✓ Year-Round Cultivation
- ✓ Increased Yields
- ✓ Environmentally Friendly



Plot 11 van Wyksvlei (N14)
Muldersdrift, Krugersdorp



www.dicla.com



011 662 1371



079 894 8839



scan to visit



Agriculture & Tunnel Supplies



Crop
Protection



Greenhouse Tunnels!

Contact us today for a FREE consultation and discover how we can tailor a solution to fit your farming needs.

Together we
grow and sustain
your business



Our passion for excellence helps you grow your business and establish yourself as a preferred supplier of perishable products.



45 Silverboom Ave
Platteklloof, Cape Town
7560

Head Office
T +27 21 930 1134
F +27 21 939 6868

www.ppecb.com



FOR ECO-FRIENDLY PEST CONTROL

BISA
BIO-INSECTARIES
SOUTH AFRICA



GET RID OF FLIES INTELLIGENTLY

Unrivalled Quality and Professional Service

Bisa breeds and distributes parasitic wasps to control flies in the pupae and therefore offers you fly control the natural way. Long-term economic benefits. Less chemical pollution. A marketing advantage by producing environmentally-friendly products.

Contact us:

Arno Moore (Ph.D) - Managing Director
Cell: 083-270-4866 / Email: arno@bioinsectsa.com





Loadtech leads in supplying quality weighing components

OUR VALUES:

HONESTY - INTERGRITY - FAIRNESS - RESPECT

Loadtech is one of the best-known manufacturers and suppliers of load cells in Southern Africa. When it comes to specialized weighing solutions, the company has over 50 years collective experience. Founded in 1987, Loadtech Load Cells has firmly established its reputation as a leader in quality load cell manufacturing.

Whether your requirement is for custom weighing systems, applications such as force measurement, centre of gravity determination or crane weighing systems, Loadtech will provide an innovative and economical solution, staying by your side long after the sale.

Loadtech Load Cells has an accredited explosion protection rating on various locally manufactured load cells.

Technical application assistance with regard to your specific needs, and attention to detail are unmatched in the industry.

The combination of own manufacture, and the extensive range of products from Vishay Transducers, Vigia, Datum and Nobel, allows Loadtech Load Cells an unequalled degree of flexibility in offering weighing solutions.

Loadtech products range from robust industrial load cells, to the highest accuracy commercial load cells. The range extends from 300g to 500 ton with accuracies from 0.2% to 0.03%, most of which are available from stock. Where standard load cells are not suitable, special load cells, or force sensors are designed and manufactured to fit your specific needs.

LOADTECH

LOAD CELLS

**LEADERS IN QUALITY LOAD CELLS
& WEIGHING TECHNOLOGY**

+27 (0)12 661 0380



www.loadtech.co.za



sales@loadtech.co.za

SERVICING & ASSEMBLING OF ANY AND ALL PUMPS

SUPPLIER OF SPRAYING PARTS

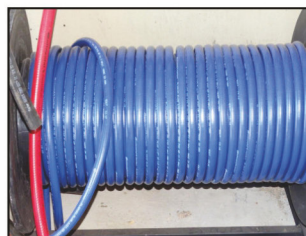
* STOCKIST OF QUANTUM & ARAG *

WE SUPPLY:

- Nozzles
- Nozzle Holders
- Jacto Sprayers
- Pumps
- Strainers
- Clamps
- Hoses
- Fittings
- Tanks
- Installations
- Spraying Equipment
- Pruning Sheers
- Banjo
- 12V Pumps
- 12V Fire Fighter



Pieter : +27 (0) 60 960 6038
 Jackie: +27 (0) 60 962 5904
 Email: spuitparte@gmail.com



© MES CON SA

The only DAM Liner with a 16 year guarantee

Flexi Linings manufacture and supply **Corrugated reservoirs, Liners** (for reservoirs, and cement and earth dams) and different **roof options**. Flexi Linings supplies the only **1000g liner (embossed with the weight and logo)** in the country AND it has a **16 year guarantee!**



Our PVC liners are reinforced with polyester base cloth and are the toughest, most durable, flexible liner on the market - they are NOT tarps!

Our guaranteed liners are black and contain UV stabilisers so the liners don't get brittle and last, despite prolonged exposure to the sun. All welding is done by a high-frequency welding process ensuring it remains waterproof.

Our linings are SABS tested, so you know that your liner is safe and reliable (with no cross contamination). Flexi linings are safe for any use:

- protecting potable drinking water (safe for human and animal consumption or in dams containing fish).
OR
- for reservoirs containing toxic waste or liquid fertiliser (to prevent pollution/ contamination of the surrounding environment).



We manufacture and supply a wide range of different sized corrugated (Aluzinc) reservoirs that last a lifetime.

We also make corrugated roofs (or PVC or shade netting covers) to prevent water contamination and evaporation.

AND... we manufacture and install liners, perfectly measured and fitted (for your existing cement and/or earth dams.)

Flexi Linings

Contact: (+27) 083 7777 670
info@flexilinnings.com
www.Flexilinnings.com

FERTASA, CERTIFIED CREDIBILITY.

**WE STAND FOR THE PROTECTION OF THE
SUSTAINABLE USE OF FERTILIZER.**

Fertasa and its members are committed to the promotion of sustainable soil fertility and enhanced plant nutrition.



STRUCTURE OF FERTASA

Fertasa is managed and directed by a Board of Directors who are elected by and representative of the ordinary members. The Board of Directors report to the Members which comprise representatives from all ordinary and affiliate members. The Members appoint operational committees to attend to various aspects of the business of Fertasa.

PURPOSE

Fertasa is a recognised and preferred body aimed at promoting the image of the fertilizer industry through:

- Promoting the integrity of each Member and building preferential trust for their products and services.

Fertasa strives to provide information on fertilizer and crop related topics. Apart from assistance with fertilizer applications, queries relating to fertilizer usage, plant nutrition and soil fertility usage, plant nutrition and soil fertility are referred to our Technical Advisers or Subject Matter Specialists for their expert opinions and advice.

Member companies and others are encouraged to share their experiences in proven techniques and novel approaches in ensuring social, environmental and economic sustainability for all.

- Enhancing and protecting the interest of its members through effective engagement with government and organised agriculture.

BOARD OF DIRECTORS

The Board of directors manages and directs the business and affairs of Fertasa. The Board comprises six (6) directors, and one (1) executive director (the Chief Executive Officer of Fertasa).

The directors are elected by the ordinary members with equal representation from both smaller and larger member companies.

CORE FUNCTIONS

- Actively promote the agro-economic and environmentally accountable fertilizer,

WHO ARE WE?

- A code of conduct.
- A set of standards audited by an independent compliance management body.
- Quality products.
- Relevant scientifically-based recommendations.
- Continual learning and improvement.
- Complying with all legal requirements.

bio-fertilizer and aglime practices;

- Develop a positive public awareness and acceptance of the need for fertilizer, bio-fertilizer and aglime use in food production;
- Improve the operating environment within which its constituent industries operate in a spirit of free enterprise and fair trade;
- Assimilate, adds value to and disseminates fertilizer, bio-fertilizer and aglime related information;
- Provide a discussion forum for its members and other parties on all aspects relating to fertilizer, bio-fertilizer and aglime distribution, agronomic advice and product quality.



FERTASA

Fertilizer Association of Southern Africa

Reg. Nr. 1971/000012/08|VAT Reg. Nr. 4830104164

N **S** **Ca** **Cu** **Fe** **B** **P** **K** **Mg**

FERTASA
Fertilizer Association of Southern Africa
Tel: +27 (0) 12 349 1450 | Email: general@fertasa.co.za

Code of Conduct
FERTILIZER ASSOCIATION OF SOUTHERN AFRICA
Compliant Certified

© MES CON SA

OPTIMUM FEED SOLUTIONS *DESIGNED FOR SOUTHERN AFRICA*



Nova Feeds is a provider of nutritional animal feed solutions to the agricultural sector in Southern Africa.

Contact one of our Depot Feed Suppliers:

Airport Pets

Charl: 083 441 2933
Bapsfontein, Gauteng

Vita Feeds

Ronel: 076 696 6266
Onderstepoort, Pretoria North

Edzi Farms

Steve: 076 992 0508
Thohoyandou, Venda

WM Foods Mokopane

Hannes: 082 800 1873
Mokopane, Limpopo

Chicken Ranch Animal Feeds

Shaun: 072 445 4179
Onderstepoort, Pretoria North

Wildfire Feeds Pyramid

Pippa: 078 400 7474
Pyramid, Pretoria North

Nova Feeds Depot D/C

Nkyasi: 073 120 5883
Polokwane, Limpopo

WM Foods Polokwane

Hannes: 082 800 1873
Polokwane, Limpopo

Kooperasie Winkel

Luzaan: 061 321 5050
Donkerhoek, Pretoria East

Wildfire Feeds Bela-Bela

Gerty: 079 504 2588
Bele-Bela, Limpopo

Radium Traders

Jaco: 082 650 6522
Radium, Limpopo

WM Foods Lebowa kgomo

Hannes: 082 800 1873
Lebowa kgomo, Limpopo