

# NAMPO

BOTHAVILLE IS BACK

## AGRIFOODSA

COME VISIT OUR STAND

**PlusNet**  
WILL BE THERE

[www.worldfocusagri.co.za](http://www.worldfocusagri.co.za)

### UNLEASH THE GREEN REVOLUTION!

World Focus Agri products act  
as an organic growth stimulant  
throughout the plants life cycle.

ORGANIC GROWTH  
STIMULANT

ORGANIC LEAF  
NUTRITION

MICRONIZED  
LIME GYPSUM

LAND  
CORRECTORS

**WORLD FOCUS**  
agri

OUTPERFORM THE NORM WITH SCIENCE-DRIVEN  
FOLIAR NUTRIENTS



Introlab is committed to develop and supply innovative world class products and solutions,  
backed by professional support.

For more information contact:  
INTROLAB (PTY) LTD (Reg. No.: 2005/039779/07)  
T +27 21 864 2145/6 E info@introlab.co.za  
W www.introlab.co.za





# EDITOR'S LETTER



Welcome to the April | May 2022 edition of the AGRIFOODSA Magazine.

After two years, or more specifically 750 days, the National State of Disaster in South Africa is over. We can all finally breathe a collective sigh of relief because we are in lockdown no more. Although the road to recovery and normality will undoubtedly be long, and certain regulations will remain in place for the foreseeable future, it certainly calls for some celebration.

The AGRIFOODSA team will be commemorating this momentous occasion by not only attending but also exhibiting at Grain SA's NAMPO Harvest Day. Following a two-year hiatus, the largest agricultural show in the Southern hemisphere will be presenting another fantastically exciting event just outside of Bothaville from 16-20 May 2022. Be sure to visit us at stand number 5 in the Zest Group Hall.

Another exhibitor at this year's NAMPO, and our cover featured advertiser, is PlusNet/Geotex. PlusNet/Geotex is a division of Master Plastics Ltd and based in Gauteng. Master Plastics Ltd was founded in 1995 and the PlusNet Range was added in 2000. PlusNet/Geotex have a fully integrated state-of-the-art production facility where they manufacture and sell shade net suitable for both agricultural and commercial use. They have shade net construction services that will meet you at your point of need, and offer nationwide delivery. To find out more about their products and services, go to [www.plusnetgeotex.co.za](http://www.plusnetgeotex.co.za).

Be sure to keep a close eye on our upcoming newsletter, competition page ([www.agrifoodsa.info/competitions](http://www.agrifoodsa.info/competitions)) and socials for exciting news and prizes up for grabs during and after NAMPO.

Even amidst the interruption, NAMPO is sure to be a wonderful and welcome escape from the madness.

Hope to see you there.

*Chantell de Bruin*

EDITOR IN CHIEF  
@chantellschmahl

## EDITORIAL COMMITTEE

Editor in chief : Chantell de Bruin  
Managing director : Mabel Schmahl  
Production manager : Ronel Schmahl  
Content manager : Aby Maclellan

## ACCOUNTS

Mariaan Kruger : +27 (0) 72 623 8073  
[accounts@agrifoodsa.info](mailto:accounts@agrifoodsa.info)

## ADVERTISING & RATES

Louis de Bruin : +27 (0) 82 060 2398  
[louis@agrifoodsa.info](mailto:louis@agrifoodsa.info)

Luzaan Wilson : +27 (0) 81 487 4408  
[luzaan@agrifoodsa.info](mailto:luzaan@agrifoodsa.info)

Mabel Schmahl : +27 (0) 82 563 4427  
[mabel@agrifoodsa.info](mailto:mabel@agrifoodsa.info)

Michelle van Vuuren : +27 (0) 66 224 0135  
[michelle@agrifoodsa.info](mailto:michelle@agrifoodsa.info)

Nicole Muller : +27 (0) 84 735 6573  
[nicole@agrifoodsa.info](mailto:nicole@agrifoodsa.info)

## COVER PHOTO PLUSNET|GEOTEX



## LAYOUT, PUBLISHING & DISTRIBUTION

MES Consultants South Africa

|              |   |
|--------------|---|
| Format       | : B5, full-colour, glossy magazine  |
| Frequency    | : Bi-monthly  |
| Language     | : Bilingual   |
| LSM          | : 6-10  |
| Print run    | : 10 000 - 15 000   |
| Digital run  | : 12 000  |
| Readership   | : 70 000  |
| Distribution | : Nationally available at agricultural outlets<br>(See our website for a complete list) |
| Read online  | : <a href="http://www.agrifoodsa.info/magazine">www.agrifoodsa.info/magazine</a>        |

**AGRIFOODSA** MAG  
SUPPLIERS GUIDE

**AGRIFOODSA** INFO

**MES** CONSULTANTS  
SOUTH AFRICA

**AGRI DATA**  
SOUTH AFRICA

© 2022 AGRIFOODSA Magazine. All rights reserved.

**Planter Monitor**

- Seed per 100m per row, seed population
- Hectares worked and much more
- Easy to install and maintain
- Fertiliser and turning of axles
- Can be applied to most planters
- Real tough, rust and water resistant

**ELECTROLEE**

**Cut losses with PRECISION Plant with VISION**

**Process Monitor for Air Seeders**

- Area
- Speed
- Tacho up to 4 axes
- Alarm on each function
- Easy to install
- Bin / Tank full
- Bin / Tank empty

**3 YEAR GUARANTEE**

**Tel: 012 345 3193**  
Cell: +27 (0) 72 181 5266  
[www.electrolee.co.za](http://www.electrolee.co.za)  
[info@electrolee.co.za](mailto:info@electrolee.co.za)  
[sales@electrolee.co.za](mailto:sales@electrolee.co.za)

SCAN ME



## **AGRIFOODSA** IS HEADING OUT

Following a two-year hiatus due to COVID-19, Grain SA will be presenting the largest show of agricultural machinery and livestock in the southern hemisphere; NAMPO Harvest Day 2022. For the first time in the Harvest Day's history it will be presented over five days – from Monday to Friday.

The event will take place at Nampo Park, Bothaville from 16-20 May 2022, in compliance with national regulations.

AGRIFOODSA is very proud and excited to be involved and will be hosting its stall at stand 5 in the Zest Group Hall. We hope to see you there.

Office: +27 (0) 12 997 3407 | Fax: +27 (0) 86 542 0704 | [info@agrifoodsa.info](mailto:info@agrifoodsa.info)



VISIT US AT  
**NAMPO**  
STAND 5  
IN THE  
**ZEST GROUP HALL**  
FOR DAILY  
PRIZES

PRIZES SPONSORED BY **M&S** CONSULTANTS SOUTH AFRICA



Head over to our

**SUPER COOL**

website

[WWW.AGRIFOODSA.INFO/COMPETITIONS](http://WWW.AGRIFOODSA.INFO/COMPETITIONS)

and put yourself in line to

**WIN** the PRIZES  
on this page and more!



[WWW.AGRIFOODSA.INFO](http://WWW.AGRIFOODSA.INFO)



## AGRISEKER

YOUR INSURANCE ADVISOR  
FOR A SURE FUTURE

WWW.AGRISEKER.CO.ZA

Pages 12-13

'n Seker Toekoms



## ALPHA DAMME

COST EFFECTIVE,  
QUALITY STEEL STRUCTURES

WWW.ALPHADAMME.CO.ZA

Pages 77 & 88



## ADVANCED HEALTH

SANITISING/DECONTAMINATING  
PRODUCTS FOR FARMERS

SIMON@ADVANCEDGRP.CO.ZA

Page 70



## APAC

AGRICULTURAL PRODUCE  
AGENTS COUNCIL

WWW.APACWEB.ORG.ZA

Page 69



## AECI PLANT HEALTH

UNLOCKING  
NATURE'S POTENTIAL

WWW.AECIWORLD.COM

Page 24



## AQUACHECK

SOIL MOISTURE MANAGEMENT,  
IRRIGATION MANAGEMENT SOFTWARE

WWW.AQUACHECK.CO.ZA

Page 89



## AFRICAN POULTRY SOLUTIONS

FROM THE FARMER,  
TO THE FARMER

WWW.AFRICANPS.CO.ZA

Page 91



## ASSURECLOUD

FROM FARM TO FORK,  
LEADERS IN FOOD SAFETY

WWW.ASSURECLOUD.CO.ZA

Pages 62-63



## AGRI DRAINAGE

EFFECTIVE WATER  
MANAGEMENT SOLUTIONS

WWW.AGRIDRAINAGE.CO.ZA

Page 78



## BAK-CON-MAT

CUSTOM MADE  
CONVEYOR MATS

WWW.BAKCONMAT.CO.ZA

Page 73



## AGRI FREQUENCIES

FARM SUSTAINABLY,  
FARM WITH FREQUENCY

WWW.AGRIFREQUENCIES.COM

Pages 52-53



## BBF SAFETY GROUP

YOUR TESTED PARTNER  
IN SAFETY WEAR

WWW.BBFSAFETY.CO.ZA

Page 58



## AGRI-COM

ONE-STOP SUPPLIER FOR  
YOUR BUSINESS AND FARM

WWW.AGRIFOODSA.INFO/  
DIRECTORY/AGRI-COM-GROUP

Page 73



## BEEKMAN SUPER CANOPIES

STYLE, STRENGTH  
AND DURABILITY

WWW.BEEKMAN.CO.ZA

Back Page



## AGRIPIECES

AGRICULTURAL  
EQUIPMENT AND PARTS

WWW.AGRIPICES.CO.ZA

Page 71



## BISA

ECO-FRIENDLY  
FLY CONTROL

WWW.BIOINSECTSA.COM

Page 89



## AGT FOODS AFRICA

FROM PRODUCER  
TO THE WORLD

WWW.AGTFOODS.CO.ZA

Page 36



## BEARING MAN GROUP

QUALITY COMPONENTS,  
TECHNICAL EXPERTISE.

WWW.BMGWORLD.NET

Page 18



## AIR SERVICE CENTRE

QUALITY AIR  
RELATED PRODUCTS

WWW.AIRSERVICECENTRE.CO.ZA

Page 44



## BRITS POLES

BUILDING, FENCING  
AND TRANSMISSION

WWW.BRITSPOLCO.ZA

Page 40





**BRUKER SA**  
SPECTROSCOPIC SOLUTIONS  
IN THE MILK & DAIRY INDUSTRY  
[WWW.BRUKER.COM/DAIRY](http://WWW.BRUKER.COM/DAIRY)  
Page 67



**EHD COMPONENTS**  
ENGINE & HEAVY DUTY  
COMPONENTS  
[WWW.EHD.CO.ZA](http://WWW.EHD.CO.ZA)  
Page 82



**CANCOR TRADING**  
WE SUPPLY PIPES, VALVES,  
FITTINGS AND MUCH MORE  
[WWW.CANCOR.CO.ZA](http://WWW.CANCOR.CO.ZA)  
Page 11



**ELANCO**  
TRUSTED BY GENERATIONS  
[WWW.ELANCO.COM](http://WWW.ELANCO.COM)  
Pages 26-27



**CHERRY IRRIGATION**  
AGRICULTURAL  
IRRIGATION SOLUTIONS  
[WWW.CHERYIRRIGATION.COM](http://WWW.CHERYIRRIGATION.COM)  
Page 90



**ELECTROLEE**  
PLANTERS, MONITORS  
& PROCESS MONITORS  
[WWW.ELECTROLEE.CO.ZA](http://WWW.ELECTROLEE.CO.ZA)  
Page 03



**CPS SEEDLINGS**  
VEGETABLE AND  
FORESTRY SEEDLINGS  
[WWW.CPSEEDLINGS.CO.ZA](http://WWW.CPSEEDLINGS.CO.ZA)  
Page 69



**ENERGY PARTNERS  
REFRIGERATION**  
WE HAVE YOUR REFRIGERATION  
NEEDS UNDER CONTROL  
[WWW.ENERGYPARTNERS.CO.ZA](http://WWW.ENERGYPARTNERS.CO.ZA)  
Page 41



**DICLA HORTICULTURE**  
TUNNEL & IRRIGATION  
EQUIPMENT  
[WWW.DICLA.COM](http://WWW.DICLA.COM)  
Page 50



**F.E.R.T.A.S.A.**  
FERTILIZER ASSOCIATION  
OF SOUTH AFRICA  
[WWW.FERTASA.CO.ZA](http://WWW.FERTASA.CO.ZA)  
Pages 42-43 & 94-95



**DRAKENSBERG  
AGRICULTURAL SERVICES**  
TRACTOR SPARES & SALES  
[WWW.AGRIFOODSA.INFO/DIRECTORY/  
DRAKENSBURG-AGRICULTURAL-SERVICES](http://WWW.AGRIFOODSA.INFO/DIRECTORY/DRAKENSBURG-AGRICULTURAL-SERVICES)  
Page 72



**HAIFA CHEMICALS**  
QUALITY FERTILIZER  
FOR VEGETABLES  
[WWW.HAIFA-GROUP.COM](http://WWW.HAIFA-GROUP.COM)  
Visit our website



**DRAKENSBERG  
GATE & FENCE**  
EFFECTIVE  
SECURITY SOLUTIONS  
[WWW.DRAKENSBERGGATEFENCE.CO.ZA](http://WWW.DRAKENSBERGGATEFENCE.CO.ZA)  
Page 65



**HARVEST GROUP**  
IDEAL PACKAGING  
SOLUTIONS  
[WWW.HARVESTBAGS.CO.ZA](http://WWW.HARVESTBAGS.CO.ZA)  
Page 92



**DROPPER FOR LIFE**  
FENCING AND ACCESSORIES  
[WWW.DROPPERFORLIFE.CO.ZA](http://WWW.DROPPERFORLIFE.CO.ZA)  
Page 91



**HEARSHAW & KINNES**  
PESTICIDE RESIDUE  
TESTING LABORATORY  
[WWW.HKAL.CO.ZA](http://WWW.HKAL.CO.ZA)  
Page 20



**DROTSKY AKTIEF**  
SIMPLY THE BEST.  
HAMMER MILLS  
[WWW.DROTSKY.CO.ZA](http://WWW.DROTSKY.CO.ZA)  
Page 79



**HOLLARD**  
BUSINESS | AGRICULTURE |  
ACCIDENT & HEALTH | MARINE |  
ENGINEERING | TRUCKING  
[WWW.HOLLARD.CO.ZA](http://WWW.HOLLARD.CO.ZA)  
Page 49



**EASTRAND WALLING**  
MANUFACTURE | INSTALL  
PRECAST CONCRETE WALLING  
[WWW.ERW.CO.ZA](http://WWW.ERW.CO.ZA)  
Page 59



**IMPAC  
CROPSURE**  
INSURE YOUR CROPS.  
[WWW.IMPACCROPSURE.CO.ZA](http://WWW.IMPACCROPSURE.CO.ZA)  
Page 69



**INTROLAB  
CHEMICALS**  
CROP SOLUTIONS TO  
OUTPERFORM THE NORM  
WWW.INTROLAB.CO.ZA  
Page 02



**MEONDO TRADING**  
SUPPLIERS OF STEEL  
AND RELATED PRODUCTS  
WWW.MEONDOETRADING107CC.CO.ZA  
Page 59



**IRRIGATION  
UNLIMITED**  
ALL YOUR IRRIGATION NEEDS  
WWW.IUNLIMITED.CO.ZA  
Pages 46-47



**MOVING PARTS**  
ALL PARTS FOR ALL TRACTORS  
WWW.MOVINGPARTS.CO.ZA  
Page 35



**JOHNSON  
SOIL AUGERS**  
DESIGNED AND MANUFACTURED FOR  
TOUGH AFRICAN SOIL CONDITIONS  
WWW.JOHNSONSOILAUGER.CO.ZA  
Page 87



**NASPAQ**  
PARTS, WORKSHOP  
& ENGINEERING  
WWW.AGRIFOODSA.INFO/  
DIRECTORY/NASPAQ  
Page 83



**JURWALD TECHNOLOGIES  
& SECURITY**  
CCTV SECURITY SYSTEMS  
FOR FARM & HOME  
DEWALD.JTS@OUTLOOK.COM  
Page 35



**NERO MANUFACTURING**  
MANUFACTURE COLD ROOMS,  
PANELS, FOOD TRAILERS & MORE  
WWW.NEROMANUFACTURING.CO.ZA  
Page 91



**KANNA INDUSTRIES**  
DESIGN AND BUILD PURPOSE  
DRIVEN FARM EQUIPMENT  
WWW.KANNAINDUSTRIES.CO.ZA  
Page 25



**NOORDWES DAMME**  
WATER STORAGE  
SOLUTIONS  
WWW.NWDAMME.CO.ZA  
Page 83



**KLERKSCALE**  
SPECIALISED  
WEIGHBRIDGE MANUFACTURER  
WWW.KLERKSCALE.CO.ZA  
Page 54



**OLI VIBRATORS**  
EFFICIENT  
DISCHARGE SOLUTIONS  
WWW.OLIVIBRA.COM  
Pages 60-61



**KNITTEX**  
MANUFACTURERS OF KNITTED  
AGRICULTURAL AND  
DECORATIVE NETTING  
WWW.KNITTEX.CO.ZA  
Pages 22-23



**OP EN TOP CANOPIES**  
WATER BARROWS, CANOPIES,  
DUSTBINS AND MORE  
JPDUPRE@LANTIC.NET  
Page 65



**KRM PLASTICS**  
SUPERIOR PLASTIC  
PRODUCTS  
WWW.KRMPLASTICS.CO.ZA  
Page 93



**OVITECH**  
TURN EGGS INTO A  
VALUABLE BUSINESS  
WWW.AGRIFOODSA.INFO/  
DIRECTORY/OVITECH  
Page 51



**LEADING EDGE**  
GLOBAL LEADERS IN  
SILAGE MANAGEMENT  
SARNANESENBEREND@GMAIL.COM  
Page 31



**P&R PUMPS**  
BOREHOLE DRILLING, CLEANING,  
REHABILITATION, TESTING & SALES  
WWW.AGRIFOODSA.INFO/  
DIRECTORY/PR-PUMPS-CC  
Page 64



**LTG FREIGHT**  
LOGISTICS & TRANSPORT  
-GLOBALLY-  
WWW.LTGFREIGHT.CO.ZA  
Pages 80-81



**PGK AGRI**  
ANIMAL HEALTH,  
FEEDS & SCANNING  
WWW.PGKAGRI.CO.ZA  
Page 25





## PLASSON LIVESTOCK

POULTRY & LIVESTOCK FARMING

WWW.PLASSON.CO.ZA

Page 79



## ROSS POULTRY

THE BREED OF CHOICE

WWW.ROSSPOULTRYBREEDERS.CO.ZA

Page 30



## PLASTIC IDEAS WESTERN CAPE

PLASTIC CRATES

WWW.PLASTICCRAVES.CO.ZA

Page 49



## ROTRIX AFRICA

MECHANISED IRRIGATION SYSTEMS

WWW.ROTRIXAFRICA.CO.ZA

Page 86



## PLEYSIER INCUBATORS

HATCHERS AND INCUBATORS

WWW.PLEYSIER.CO.ZA

Page 79



## SAKELIGA KRAGDAG

BIGGEST ALTERNATIVE ENERGY & INDEPENDENCE EXPO IN GAUTENG

WWW.KRAGDAG.CO.ZA

Page 15



## PLUSNET|GEOTEX

AGRICULTURAL SHADE NETS & MORE

WWW.PLUSNETGEOTEX.CO.ZA

Cover



## SAKPRO

PACKAGING SOLUTIONS FOR FRESH PRODUCE

WWW.SAKPRO.CO.ZA

Pages 84-85



## PPECB

PERISHABLE PRODUCTS EXPORT CONTROL BOARD

WWW.PPECB.COM

Page 31



## SENTER360 TECHNOLOGIES

IRRIGATION SYSTEMS PERFECTED

WWW.SENTER360.CO.ZA

Page 56



## QUANTUM FOODS-NOVA FEEDS

QUALITY ANIMAL FEED

WWW.NOVAFEEDS.CO.ZA

Page 68



## SOUTHERN HEMISPHERE SEEDS

THE POWER IS IN THE YIELD

WWW.SHS.FARM

Pages 32-33



## RCL FOODS - MOLATEK

SUITABLE FEED FOR THE BEST POSSIBLE RESULT

WWW.RCLFOODS.COM

Page 21



## SOYGRO

LEADERS IN MICROBIOLOGICAL PLANT AND SOIL INOCULANTS

WWW.SOYGRO.CO.ZA

Page 49



## REINKE SOUTH AFRICA

QUALITY IRRIGATION AND INNOVATION

WWW.REINKE.COM

Pages 39 & 74



S.T.M. South Africa  
EMPOWERING YOUR IDEAS

## S.T.M. SOUTH AFRICA

SPECIALISED TRANSMISSION & MECHANICAL SOUTH AFRICA

GEARBOXES AND GEARED MOTORS

WWW.STMSA.CO.ZA

Page 51



## RHINO TRALIES

CUSTOM MADE RAILS

WWW.RHINOTRALIES.CO.ZA

Page 73



## SPECK PUMPS

WATER MAINTENANCE MADE EASY

WWW.SPECK-PUMPS.CO.ZA

Page 34



## RIPPER TILLAGE

DESIGN & DEVELOPMENT OF AGRICULTURAL EQUIPMENT

WWW.RIPPERTILLAGE.CO.ZA

Page 16



## STAALBEER

SUPPLIER OF ALL TYPES OF STEEL AND RELATED PRODUCTS

WWW.STAALBEER.CO.ZA

Page 19



**STAALBOER**  
 COST EFFECTIVE RESERVOIRS  
 ANYWHERE IN THE WORLD  
[WWW.STAALBOER.COM](http://WWW.STAALBOER.COM)  
 Page 55



**VAN ZYL  
 STAALWERKE**  
 PARTS, REPLACEMENT PARTS,  
 LUBRICANTS & HYDRAULIC WORK  
[WWW.VANZYLSTAAL.CO.ZA](http://WWW.VANZYLSTAAL.CO.ZA)  
 Page 75



**SWARTLAND  
 SPUITPOMPE**  
 SPECIALISTS IN A  
 VARIETY OF SPRAY PUMPS  
[WWW.SWARTLANDSPUITPOMPE.CO.ZA](http://WWW.SWARTLANDSPUITPOMPE.CO.ZA)  
 Page 87



**VDW  
 ENGINEERING**  
 YOUR ONE-STOP CATTLE  
 HANDLING EQUIPMENT SUPPLIER  
[INFO@VDWENGINEERING.CO.ZA](mailto:INFO@VDWENGINEERING.CO.ZA)  
 Page 25



**TALBERT**  
 MANUFACTURING OF  
 HIGH QUALITY PIVOTS  
[WWW.AGRIFOODSA.INFO/DIRECTORY/  
 TALBERT-PIVOTS-PTY-LTD](http://WWW.AGRIFOODSA.INFO/DIRECTORY/TALBERT-PIVOTS-PTY-LTD)  
 Page 59



**VERMEER EQUIPMENT**  
 AGRICULTURAL  
 EQUIPMENT SUPPLIERS  
[WWW.MULTI-ONE.CO.ZA](http://WWW.MULTI-ONE.CO.ZA)  
 Page 37



**TESSENDERLO KERLEY**  
 UNLOCK THE FULL  
 POTENTIAL OF SOIL  
[WWW.TESSENDERLOKERLEY.COM](http://WWW.TESSENDERLOKERLEY.COM)  
 Page 93



**VERMONT SALES**  
 BUILD YOUR OWN PROJECT.  
 WE HAVE IT ALL  
[WWW.VERMONTSALES.CO.ZA](http://WWW.VERMONTSALES.CO.ZA)  
 Page 48



**TILL MASTER**  
 AGRICULTURAL MACHINERY  
[WWW.TILLMASTER.CO.ZA](http://WWW.TILLMASTER.CO.ZA)  
 Page 19



**WAM SOUTH AFRICA**  
 AGRICULTURAL EQUIPMENT  
[WWW.WAMGROUP.CO.ZA](http://WWW.WAMGROUP.CO.ZA)  
 Page 38



**TONEL WORKWEAR**  
 MANUFACTURERS OF WORKWEAR,  
 CUSTOMISED TO YOUR NEEDS  
[WWW.TONELWORKWEAR.CO.ZA](http://WWW.TONELWORKWEAR.CO.ZA)  
 Page 41



**WATER SPOT**  
 QUALITY COMMERCIAL AND  
 RESIDENTIAL PRODUCTS  
[WWW.WATERSPOT.CO.ZA](http://WWW.WATERSPOT.CO.ZA)  
 Page 76



**TOPCON  
 AGRICULTURE**  
 PRECISION AGRICULTURE  
[WWW.TOPCONPOSITIONING.COM](http://WWW.TOPCONPOSITIONING.COM)  
 Page 55



**WATEX**  
 REINFORCED HOISING  
[WWW.WATEX.CO.ZA](http://WWW.WATEX.CO.ZA)  
 Page 66



**TWK AGRI**  
 MANUFACTURED  
 TIMBER PRODUCTS  
[WWW.TWKAGRI.COM](http://WWW.TWKAGRI.COM)  
 Page 17



**WES-TRANSSVAAL  
 SPUITPARTE**  
 PARTS FOR SPRAYERS & PUMPS  
[SPUITPARTE@GMAIL.COM](mailto:SPUITPARTE@GMAIL.COM)  
 Page 45



**UITZICHT TRANSPORT**  
 AGRICULTURAL VEHICLES  
 AND ENGINEERING  
[WWW.UITZICHTSAND.CO.ZA](http://WWW.UITZICHTSAND.CO.ZA)  
 Page 45



**WORLD FOCUS AGRI**  
 MANUFACTURER OF  
 INORGANIC FEED PHOSPHATES  
[WWW.WORLDFOCUSAFRICA.CO.ZA](http://WWW.WORLDFOCUSAFRICA.CO.ZA)  
 Cover Strip & Pages 28-29



**UNION ENGINEERING**  
 DESIGN AND MANUFACTURING  
 OF HIGH FREQUENCY SCREENS  
 FOR PARTICLE SEPARATION  
[WWW.UNIONENGINEERING.CO.ZA](http://WWW.UNIONENGINEERING.CO.ZA)  
 Page 57



**YARA ANIMAL FEED**  
 MANUFACTURER OF  
 INORGANIC FEED PHOSPHATES  
[WWW.YARA.CO.ZA](http://WWW.YARA.CO.ZA)  
 Pages 11 & 37



**AGRIFOODSA** PRESENTS **AGRIHOW™**

Developing future farmers in SA... just a click away!

Healthy and sustainable food systems are critical to achieving the world's development goals. Agricultural development is one of the most powerful tools to end extreme poverty, boost shared prosperity, and feed a projected 9.7 billion people by 2050.

AGRIFOODSA will be introducing a new value-added opportunity to all of our sponsors in the form of regular AGRIHOW™ articles addressing pressing issues in the industry and development in agriculture that specifically small-scale farmers must be aware of.

**BECOME A SPONSOR!**

**CONTACT US TODAY**  
for tremendous  
value added offerings.

WWW.AGRIFOODSA.INFO  
info@agrifoodsa.info  
+27 (0) 12 997 3407

**CANCOR**

TRADING 7 CC

Reg No 2000/066754/23

SUPPLIERS OF:

- Pipes
- Fittings
- Valves
- Special Fabrications
- Pump Stations
- River Extraction Pipes

**24H BREAKDOWN SERVICE**



WWW.CANCOR.CO.ZA

Yvonne: +27 (0) 84 655 4907 | Thabo: +27 (0) 83 434 5133  
Email yvonne@cancor.co.za



Knowledge grows



Hier is iets om  
aan te herkou...

## BOLIFOR® MONO AMMONIUM PHOSPHATE (MAP)

Bron van fosfaat en stikstof in lekke en voere vir herkouers

- Hoog beskikbare P bron (26% P)
  - Spaar formulasiespasia
- Bevat 10% stikstof (62.5% Proteïen ekwivalent)
  - Verlaag die risiko van ureum-vergiftiging
- Korrelvorm maak dit vryvloeiend en stofvry
- Bevat geen kalsium wat dit uiters geskik maak vir areas waar ekstra kalsium in die drinkwater voorkom

*Innoverende oplossings in dierevoeding!*

[www.yara.co.za/animal-nutrition/](http://www.yara.co.za/animal-nutrition/)

animal.nutrition.sa@yara.com | Tel: +27 (0)31 910-5100

Bolifor® MAP - Reg. Nr. V30120. Alle produkte geregistreer onder Wet 36 van 1947.  
Yara Animal Nutrition Suid-Afrika (Edms) Bpk. Reg. Nr. 2001/025850/07

uppe marketing\_A29441/A





**Wie is AgriSeker?**

AgriSeker is ’n spesialis in onderskrywing in die Suid-Afrikaanse oesversekeringsmark, met die visie om ’n landbou- en oesbestuursdiens te bied. Hierdeur dra ons by om ’n belangrike rol te speel in die voedselsekerheid van ons pragtige land. Ons skep verhoudings met kliënte en versekeringsadviseurs en hou dit in stand deur ’n pasmaak infrastruktuur te skep om hierdie verbintenisse met voortreflike kennis en kundigheid te ondersteun.



By AgriSeker lewer ons ’n onderskrywingsdiens onder die lisensie van die Land Bank Versekeringsmaatskappy (SOC) (LBIC) d.m.v. ’n ooreenkoms met LBIC as die versekeraar, om oesversekering namens hul te bestuur en te onderskryf. Die groter boek word verder onderskryf deur ’n internasionale paneel van Hersekerars.

AgriSeker is geregistreer as ’n onafhanklike regsentiteit met al die nodige statutêre verpligtinge in plek om as ’n Onderskrywingsbestuursagentskap te funksioneer. Die maatskappy gebruik slegs geregistreerde en geakkrediteerde Tussengangers, gemagtig om AgriSeker produkte te bemark.

**Wat doen AgriSeker?**

Stormweer kan uiterste gevolge vir jou oeste inhou ... veral

AGRISEKER IS OPGEWONDE OOR DIE TOEKOMS VAN LANDBOU IN SUID-AFRIKA. ONS LEUSE IS NIE VERNIET... "’N SEKER TOEKOMS" NIE.

AGRISEKER IS GEMOTIVEER OM ’N BYDRAE TE LEWER TOT DIE TOEKOMS VAN ONS LAND MET ’N TOEGEWYDE FOKUS OP LANDBOU DEUR KENNIS, BEGRIP EN DEELNAME IN HIERDIE SEKTOR. ONS FOKUS IS OP ONS BOERE EN JONGMENSE... ONS HET JULLE NODIG VIR DIE VOORTBESTAAN VAN LANDBOU.



[WWW.AGRISEKER.CO.ZA](http://WWW.AGRISEKER.CO.ZA)





as 'n belowende oes skielik deur hael vernietig word. AgriSeker ondersteun kliënte deur moeilike omstandighede wanneer risiko's boerdery-bedywigheede bedreig. Om skade te bepaal is waar die AgriSeker Familie se kundigheid werklik ter sprake kom.

Ons bied met vertroue 'n finansiële risikobestuurdiens aan die boer. Kontantvloedruk en ander invloede op welvaart is 'n realiteit, daarom het ons saam met ons Versekeraar, LBIC gewerk aan strategieë tot voordeel van die produsent. Ons versekeringsoplossings is spesifiek aangepas vir die behoeftes van boere.

Alhoewel AgriSeker graan en oliesade dek, is boorde, tesame met wingerde en groente ook verseker teen skade van die meeste weerstoestande soos hael, ryp, wind en brand, asook onvoorsiene ongelukke soos 'n swaarvoertuig wat sy vrag verloor op pad na 'n silo. Ons is ook daar om te help as beeste groener weivelde soek en deur die heining breek om aan lekker mielies te smul.



## Hoekom is oeversekering noodsaaklik?

Om een enkele rede... klimaatselemente is onvoorspelbaar en in baie gevalle vernietigend vir 'n oes. Hierdie klimaatselemente verhoog die risiko in landbouproduksie.

## Hoekom is dit voordelig om deur AgriSeker te verseker?

Ons Snap Landbou se Hartklop!  
Die AgriSeker-dienstandaarde



waarop kliënte die afgelope paar dekades staat gemaak het, is steeds stewig in plek om boere se verskeie risiko behoeftes aan te spreek.

Ons finansiële stabiliteit stel ons in staat om oesversekeringseise vinnig en akkuraat te bepaal en te betaal. Ons voeg waarde toe tot die kliënt se boerderybesigheid met 'n pasmaak werkvloei, kundige produktoepassing en advies binne die konteks van ons statutêre verpligting.

Toeganklikheid, oop kommunikasie en dienslewering is ingewortel in die manier waarop die AgriSeker Familie dinge doen.

Met 'n wye diensleweringennetwerk byderhand, is AgriSeker die beste geposisioneer om 'n risikobestuurdiens aan boere en kliënte regoor Suid-Afrika te bied.

Alle taksering van skade op land of in die boord moet deur 'n spesialis hanteer word, daarom word al ons assessors jaarliks geakkrediteer en net die beste kundigheid word aangewend om verliese vinnig en akkuraat te bepaal.

Ons assessors het ook nie teruggestaan tydens die afgelope seisoen se nat toestande nie. In die

meeste gevalle is daar verder te voet getakseer.

AgriSeker doen uitgebreide navorsing oor tegnologiese vooruitgang om doeltreffend aan ons kliënte se voortdurend veranderende behoeftes te voldoen. Ons bied 'n operasionele en versekeringsondersteuningsdiens, met 'n nuwe unieke onderskrywing- en bestuursstelsel. Hierdie verseker vinnige diens wat aan ons kliënte akkurate en doeltreffende resultate bied en dit vir boere makliker maak om 'n vinnige aanpassing te maak op 'n tydskedule wat gewoonlik die besigste tyd tydens produksie is



## Gespraak van Nat toestande, wat is die Cumulus verslag?

Inligting word aan ons kliënte gekommunikeer via die Cumulus ('n weeklikse weernuusbrief in seisoen) wat die onmiddellike klimaat en weerstoestande insluit.

Die Cumulus word saamgestel deur Dr. Johan Malherbe van die Landbounavorsingsraad (een van die bes gekwalifiseerde landbouweerkundiges in die land) in samewerking met AgriSeker se eie Reinhard Kuschke.



Skakel jou naaste  
Versekeringsadviseur of  
besoek ons webtuiste.

Vra jou versekeringsmakelaar of vind ons aanlyn by [agriseker.co.za](http://agriseker.co.za)

AgriSeker Onderskrywingsbestuurder (Edms) Bpk.  
lrig no. 2014/235270/07 is 'n Gemag. gde  
Finansiële Dienste Verskaffer: FSP no. 45767.  
Onderskryf deur Land Bank  
Insurance (SOC) Bpk.  
lrig no. 2012/15426/30.





Gedurende die afgelope 739 dae van grendeltyd het AGRIFOODSA aansienlike planne beraam om ons tydskrif en webblad aan lesers en gebruikers bekend te stel, asook om aan ons adverteerders meer blootstelling as ooit te vore te gee.

Daarom is ons geweldig opgewonde om bekend te maak dat AGRIFOODSA in 2022 by Sakeliga Kragdag gaan uitstal.

Daarby, is AGRIFOODSA trotse media borge van hierdie toonaangewende landbouekspo.

Besoek ons by Kragdag in die Landbou Sub-ekspo onderdak uitstalruimte. Dan, hou gerus ons nuusblad, sosiale media en nuusbriewe dop vir meer inligting en opwindende kompetisies. En laastens, boekmerk [www.agrifoodsa.info](http://www.agrifoodsa.info) vir al jou landbou en sekondêre behoeftes.



## SAKELIGA KRAGDAG:

Die grootste alternatiewe energie en selfstandigheid-ekspo in die land, en grootste landboukou in Gauteng.

Hierdie jaarlikse doen-jou-eie-ding ekspo word vanjaar vir die dertiende keer aangebied van 11-13 Augustus, net 20km buite Pretoria op Diamantvallei Landgoed! Sakeliga KragDag 2021 is deur 21 000 mense bygewoon, wat dit ook die grootste ekspo vir die jaar in Suid-Afrika maak!

Die ekspo het in 2008 ontstaan toe alternatiewe vir Eskom kragvoorsiening nog nie vrylik beskikbaar was vir die publiek nie, en KragDag 'n handjievol kragvoorsieners bymekaar gebring het. Dit het egter gegroei tot 'n ekspo wat vandag vir besoekers 'n verskeidenheid doen-jou-eie-ding lewenstyplossings bied. Hieronder val energiebesparing, sonkrag, veiligheid, nuwe tegnologie, opvoedkunde, buitelukragtoerusting en vele meer.

Sedert 2019 maak 'n volwaardige landbou sub-ekspo in samewerking met TLU SA ook deel uit van die ekspo. Die doel met die ekspo is om mense aan te moedig om innoverend te bou aan 'n volhoubare selfstandige vrywees lewe, deur self verantwoordelikheid vir hulle lewens te neem.



Alhoewel dit 'n leersame geleentheid is, word dit in 'n karnaval atmosfeer aangebied en is groot pret vir die hele gesin. Besoekers kan hierdie jaar uitsien na sowat 600 maatskappye wat hulle selfstandigheidsoplossings sal ten toon stel. Die raadsaal program in die Sakeliga Plein sal 'n wye verskeidenheid aktuele en informatiewe onderwerpe insluit.

Die Inyati Arena sorg ook vir aanskoulike landbouvertonings, vee-rastoonstellings en

demonstrasies.

Die streekskampioenskappe vir die Toyota SA Jong Afslaaers word ook vanjaar weer by Sakeliga KragDag aangebied.

KragDag is passievol oor entrepreneurs, en bied weer 'n Junior Entrepreneurskompetisie aan waar jongmense tot die ouderdom van 21 hulle produkte aan die besoekers kan bekendstel. Groot kontantpryse, asook besigheidsafgrigting en kursusse kan gewen word.



Besoekers kan die ekspo bywoon deur 'n drie-dag kaartjie te koop teen R100 by die hekke, of teen R50 aanlyn te bespreek. Verkope open 1 Mei 2022.

Die ekspo maak voorsiening vir verskillende kategorieë waarin ondernemings kan uitstal. Tema uitstallers sluit alle ondernemings in wie se uitstalling voldoen aan die doen-jou-eie-ding selfstandigheidstema. Dan is daar die Landbou uitstallers, Opvoedkunde sub-ekspo vir enige onderrig uitstallers, 'n Makersbeweging ("Makers Movement") wat uitstallers insluit wat fokus op elektronika, 3D-drukkers, die Internet van Dinge en nuwe patente uit herwinde materiaal, die Junior Entrepreneurs, 'n Kuns en Knabbel Mark in samewerking met Solidariteit Helpende Hand, Verversings asook Vermaak.

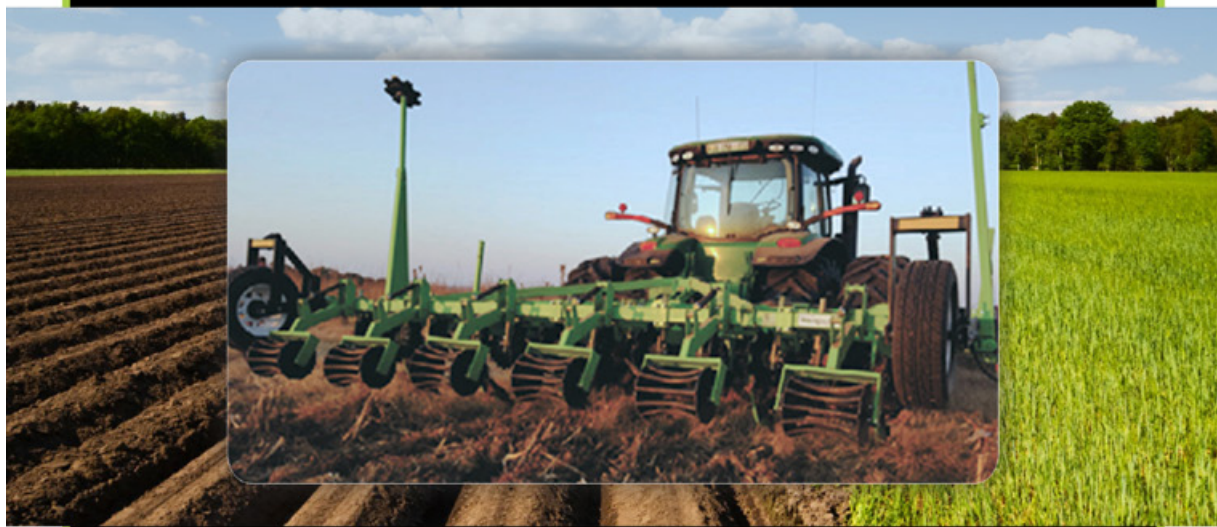


Ondernemings wat inpas by die tema en graag by KragDag wil uitstal, kan +27 (0) 87 231 1644 skakel vir meer inligting.

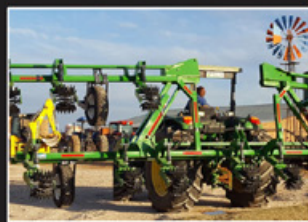


# RIPPER TILLAGE

## Equipment



[www.ripper tillage.co.za](http://www.ripper tillage.co.za)



### Ripper Tillage Equipment design and develop Agricultural Equipment. Manufacturing of Riptill, Stripill equipment, Rolegland and Planter closing wheels.

When you choose Ripper Tillage Equipment, you will find a friendly and competent supplier who truly cares about your interests and building long-term commercial relationships in your yearly farming practices. As a family that has been involved in the manufacturing of agricultural equipment for the past three decades we truly understand the challenges our South African farmers are facing and hence provide equipment and services that meet needs and requirements of our customers.

A dynamic company founded in 1984 by Chris Botha, a third-generation farmer on Graspan that prides itself with the engineering and manufacturing of robust agricultural equipment designed to accommodate the

farmer's soil conditions and requirements.

Ripper Tillage Equipment was established in 2014 by Christine Boucher second generation of manufacturers. Together with Christoff Botha we proud ourselves as a brother and sister team, delivering quality agricultural products for the past 8 years.

Our core operational activities consist of the design, retail and manufacturing of seedbed preparation products within the conservation practices of soil preparation. With the focus on an ever-changing environment, we supply everything from pre-planting tools, planting equipment to after-planting practices.

©MES CON SA



[info@ripper tillage.co.za](mailto:info@ripper tillage.co.za)  
[sales@ripper tillage.co.za](mailto:sales@ripper tillage.co.za)



Christine Boucher  
+27 (0) 82 773 9297



Henneman  
Free State



[/ripper tillage](https://www.facebook.com/ripper tillage)





# Manufactured Timber Products

The timber for our treatment plants are sourced from TWK's own sustainable plantations.

Our treatment facilities meet the South African National Standards SANS 457, SANS 754, SANS 1288.

We pride ourselves on producing Quality H4 and H5 products. On Time. In Full.

**Our CCA and Creosote product range include:**

- Building and fencing
- Agricultural netting
- Transmission
- Vineyard
- Orchard

Contact us now for these treated timber products.

*Chantanel Bezuidenhout*

T: +27 (0)12 991 9260

E: [mtp@twkagri.com](mailto:mtp@twkagri.com)



[www.twkagri.com](http://www.twkagri.com)

f @ in





Graan SA/Grain SA

# NAMPO

OESDAG HARVEST DAY

**Experience it!**

BoerSlim is a concept BMG has developed to demonstrate our commitment to providing you with added value service and products.

Through this initiative, BMG's team of agricultural experts offer farming sustainability solutions that focus on effective food production, the correct use of suitable equipment for the specific task and the efficient application of advanced technologies.

We look forward to showcasing our industry-leading technology through live product demos.

Exciting BoerSlim merchandise and competitions throughout the week.

Find us indoor at Santam Landbou and outdoor next to Toyota.

All displayed products and merchandise will be available online.

**We look forward to welcoming you.**



[www.bmgworld.net](http://www.bmgworld.net)



**B-BBEE 2**  
EMPOWERING SUPPLIER

|           |           |
|-----------|-----------|
| ISO 9001  | Certified |
| ISO 14001 | Certified |
| ISO 45001 | Certified |





- Galvanised Roof Trusses
- Reinforcing Steel
- Laser Cutting & Bending
- Guillotine Cutting
- Perforated Plate
- Wire Fencing
- Roof Sheeting
- Structural Steel
- Tube & Plate
- Palisade Fencing

**POTCHEFSTROOM**

C/O Ross & Promosa Road, Potch Industria  
+27 (0) 18 297 5320  
potch@staalbeer.co.za

**VEREENIGING**

C/O Troost & Joubert Street, Duncanville, Vereeniging  
+27 (0) 16 422 3271  
vereeniging@staalbeer.co.za

**BOTHAVILLE**

9th Avenue, Bothaville Industria  
+27 (0) 56 515 4415  
bothaville@staalbeer.co.za

**DELIVERIES TO YOUR DOOR AVAILABLE WITHIN A RADIUS OF 350km FROM NEAREST BRANCH**

**TILL MASTER**

216 Victoria Road, Pietermaritzburg

**MANUFACTURERS & SUPPLIERS OF  
QUALITY AGRICULTURAL MACHINERY**

At Tillmaster we pride ourselves in the best quality farming equipment. We use the best materials so that you as a valued client will receive the best we can produce. Our products are long lasting and we do any maintenance ourselves so that you can rest assured that your farming equipment will last.

We are based in Pietermaritzburg and have a long list of satisfied clients that keep coming back due to our excellent service and reliability. From our rippers to potato lifters we will find a solution for your specific farming requirements. Give us a call or come see us at our office's and you will be blown away with our standard of service and professionalism.



**RIDGER | FERTILISER APPLICATOR**



**DISC HARROW**



**RIPPER**



**POTATO LIFTER**



**GRADER**

**AGRI SPARES**

Agri Spares is a division of Tillmaster Pietermaritzburg. We sell high quality spares for all of our manufactured equipment.

We also stock a wide range of agricultural spares. Come in and see for yourself. The quality of agricultural spares is of a very high standard and we pride ourselves in great customer service

SCAN ME



VISIT OUR WEBSITE  
FOR MORE PRODUCTS

[www.tillmaster.co.za](http://www.tillmaster.co.za)

Office: +27 (0) 33 394 4543



## SOUTH AFRICA'S LEADING PESTICIDE RESIDUE TESTING LABORATORY



### WHO WE ARE

Hearshaw and Kinnes Analytical Laboratory (Pty) Ltd. is an independent laboratory specialising in pesticide residue analysis for the agricultural and food producing industries since 2002.

We are focused on building productive relationships with our clients through communication and reliability.

We invest in highly qualified personnel and the best available instrumentation and laboratory equipment.

We are the only pesticide residue testing laboratory in South Africa that uses state of the art high resolution equipment that is in line with the top European laboratories.

### WHY CHOOSE US



Reliable Results



Short Turnaround Times



Extended Scope of Testing



Cost Effective

### SCOPE OF TESTING

In addition to our multi-residue methods we also have a number of target analysis methods:

- Rapid (24hr) Ethephon testing
- Alkaline hydrolysis for acidic herbicides
- Chlormequat, Mepiquat
- Dinocap and Meptyl Dinocap
- Dithianon
- Phosphonic acid, Fosetyl and Fosetyl AI
- Dithiocarbamates
- Glyphosate, Glufosinate and AMPA
- Guazatine

### CONTACT US

+27 21 702 4131 | [info@hkal.co.za](mailto:info@hkal.co.za) | [WWW.HKAL.CO.ZA](http://WWW.HKAL.CO.ZA)  
Ronelle: +27 82 461 6533



# WINTER LICK

## FOR OPTIMAL PERFORMANCE IN WINTER, ADD PROTEIN!



Cattle grazing on winter dryveld need extra protein to ensure optimal performance.

**Molatek's** ready-mixed **Dryveld 46** is suitable as a maintenance lick for dry and lactating animals. Mixed with grain, it can be used as a production lick. Use **Molatek Lick Mix 87** to mix your own transition, maintenance and/or production licks on the farm.

### ADVANTAGES

- Stimulate intake and digestion of roughage.
- Limit weight loss during winter.
- Prevent gallsickness.
- Increased conception and calving percentages.
- Optimum microbial protein production due to synchronized release of nitrogen (from urea) and energy (from molasses).



agritech marketing AZ21/14

## DRYVELD PASTURE SOLUTION



For more information about **Molatek's** specific feeds and services, contact:  
**RCL FOODS:** [www.rclfoods.com](http://www.rclfoods.com)  
**MOLATEK:** +27(0)13 791-1036 | [www.molatek.co.za](http://www.molatek.co.za) | [molatek@rclfoods.com](mailto:molatek@rclfoods.com)

Dryveld 46 Reg. No. V20820 (Act 36 of 1947), Lick Mix 87 Reg. No. V19783 (Act 36 of 1947)  
N-FF2663 (Namibia)







# Knit<sup>®</sup>tex

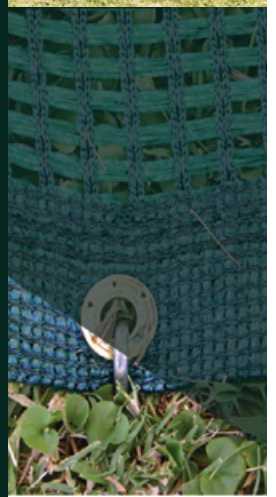
Since 1964

Manufacturers of Knitted Agricultural  
and Decorative Shade Netting

VISIT US AT **NAMPO &**

# WIN

ONE OF 5 KNITTEX  
GROUND SHEETS!



DELIVERING ON PROMISES *Since 1964*

+27 (0)11 692 1658 | [info@knittex.co.za](mailto:info@knittex.co.za) | [www.knittex.co.za](http://www.knittex.co.za)   



# 16 - 20 MAY 2022

VISIT US AT STAND H10B  
FOR MORE INFORMATION

# SHADE NET STRUCTURES

Sheltering the future of a hungry world

Poor and seasonal production of crops has been a problem in South Africa, leading to a dependency of imported fruits and vegetables. Among others, damage caused by sunburn, hail, insects, and our latest record in drought also add to the problem.

"If agriculture is to continue to feed the world, it needs to become more like manufacturing," says Geoffrey Carr. Fortunately, that is already beginning to happen.

To fight back and increase crop production, yield and income - shade net was found to be a suitable champion for the job. More and more farmers are erecting large shade net structures and reaping the benefits from it, by being able to create an ideal and manageable environment for their crops to flourish in.



In hot climates around the world, vegetables and cut flowers are grown under shade cloth to reduce heat and light intensity. With the help of science, innovative light manipulation and UV management, results show that photo-selective colour nets create an environment that can be managed and turned into an optimal growing condition that allows the farmer to produce crops, sometimes even during off-season, with better growth, development and higher yield.

In the short run, shade net structures will boost farmers' profits, by cutting costs and increasing quality of yields, and should also benefit the consumer's pocket. In the longer run though, it may add to the solution to an increasingly urgent concern - Between now and 2050 the planet's population is likely to rise to 9.7 billion, from 7.3 billion now. Those people will not only need to eat, they will want to eat

better than people do now.

Knittex is a proud industry leader when it comes to manufacturing high quality knitted fabric that is durable and 100% recyclable. Clients trust our SpectraNet range to not only give them the highest results but also the best return on investment. With years of research and development our team can boast with a product that delivers a 10-year guaranteed lifespan. Some of our nets are celebrating more than 25 years out in the field. Speak to one of our team members for the best advise for your shade netting needs: [info@knittex.co.za](mailto:info@knittex.co.za).



***We are, more than a shade better than the rest.***

This year at NAMPO we demonstrate our shade netting's strength by erecting a 2m x 2m structure and covering it with Code 20. We'll load the structure with 400kg on the Sunday before NAMPO, and leave it like that for the entire week.

At the end of NAMPO 2018, our team decided to have a bit of fun and our Knittex sales rep, climbed on top of the load. A picture is worth a thousand words and this one says all you need to know about our level of quality and strength.

Knittex is an industry-leading manufacturer of high-quality knitted fabric that is durable and 100% recyclable. Their SpectraNet range provides producers with the highest results and best return on their investment. This is backed by years of research and development to ensure that nets have a guaranteed lifespan of 10 years or more.

**VISIT US AT NAMPO THIS YEAR, STAND H10B AND STAND A CHANCE TO WIN ONE OF 5 KNITTEX GROUND SHEETS!**

## SHELTERING THE FUTURE OF A HUNGRY WORLD





good chemistry

 **NULANDIS**<sup>®</sup>  
*unlocking nature's potential*

*is now trading as*

 **AECI**<sup>®</sup>  
  
**PLANT HEALTH**

After 50 years as a proud member of the AECI Group, Nulandis is now trading as AECI Plant Health. We are still focused on what matters most to growers by understanding their need and ambitions.

*We will continue to:*



**DEVELOP** *sustainable and holistic solutions that enhance crop performance*



**STRIVE** *to unlock nature's potential while preserving the environment*



**ANSWER** *the consumer's call for access to food that is nutritious and safe*

SAME EXPERTISE . SAME PRODUCTS . NEW NAME .

**T:** +27 11 823 8000

**E:** [planthealth@aeciworld.com](mailto:planthealth@aeciworld.com)

**W:** [aeci-ph.com](http://aeci-ph.com)

 **AECI**<sup>®</sup>  
  
**PLANT HEALTH**



## YOUR ONE-STOP CATTLE & SHEEP HANDLING EQUIPMENT SUPPLIER

WE ALSO SUPPLY A WIDE RANGE OF OTHER AGRICULTURAL EQUIPMENT.

- Mobile crush and neck clamps
- Cattle neck clamps
- Standard & mobile loading ramps
- Loading ramps & panels
- Enclosure panels
- Gated enclosure panels
- Feeding troughs
- Work stations
- 2 Way sorting gates
- Support arches
- Support arches with gate
- Weigh bars
- Spray race
- Branding irons
- Bale rings
- Scales



### NATIONWIDE DELIVERY!



Hennie van der Walt  
+27 (0) 72 901 4033  
info@vdwengineering.co.za



PGK Agri fokus primêr op die gesondheid en die bestuur van ekstensiewe, sowel as intensiewe boerdery, aangaande bees | skaap | varke en hoenders.

Ons lewer die volgende dienste:

- Diergesondheid
- Voeding (Sernick Animal Feeds)
- Dragtigheid



Skakel: Piet  
+27 (0) 81 093 9759

DIE REGTE OPLOSSING VIR DIE REGTE DIER OP DIE REGTE TYD



## ONS VERVAARDIG VERSKEIE IMPLEMENTE

- Wolperse
- Ronde baallaaiers
- Skaap hanterings toerusting
- Boordskrapers
- Ophys toerusting en doelgerigte ontwerp

Willa Nolte

+27 (0) 72 333 1051  
+27 (0) 21 010 0707  
+27 (0) 86 443 2720

willa@kannaindustries.co.za

WWW.KANNAINDUSTRIES.CO.ZA



Samuel Walterstraat 1, Worcester

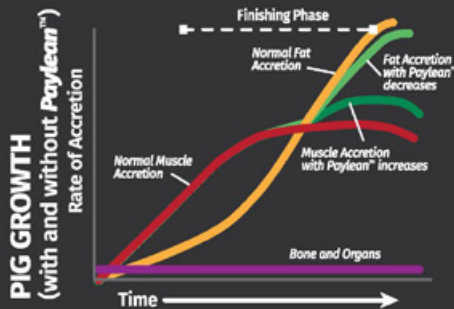


# Meatier Pigs, Heftier Profits Paylean™ Pays!



As pigs grow toward market weight, average daily gain increases, reaches a plateau and then begins to decline in late-finishing pigs. Feed intake increases while feed efficiency worsens and lean gain declines. Ractopamine Hydrochloride (Paylean™) helps by directing nutrients for muscle growth.

To help offset late-finisher performance decline, target feeding Ractopamine Hydrochloride (Paylean™) for the final 28 days before market.



Ractopamine Hydrochloride (Paylean™) improves late finishing performance, through put and profit.

References:  
 1. Schlotter, J. and Emmels, (1992). Concepts of pig growth and composition. *Dep. of Anim. Sci* 1, 10. 2. Anis, et al. 2007. Further Meta-Analysis of the Ractopamine Response in Finishing Swine. *The Prof. Anim. Sci.* 33(2): 179-196.  
 3. Armstrong TA et al. 2004. The effect of dietary ractopamine concentration and duration of feeding on growth performance, carcass characteristics and meat quality of finishing pigs. *J. Anim. Sci.* 99(11): 3215-3223.  
 4. Hixon RB et al., 2012. Effects of feeding ractopamine (Paylean™) on growth and carcass traits in finishing pigs marketed at equal slaughter weights. *The Professional Animal Scientist* 28:657-663.  
 5. Baskin, D et al., Diverse sources of Ractopamine affect growth performance differently. *IPVS* 119. 6. Elanco Animal Health Data on File. 7. Elanco Animal Health Data on File.  
 8. Code 2017. Maximum Residue Limits (MRLs) and Risk Management Recommendations (RMRs) for residues of Veterinary Drug Foods. Pg. 33.

Paylean™ 20 Reg. No.: G2320 (Act 35/1947). Contains Ractopamine Hydrochloride 20g/kg. For use in swine finisher feeds only. Paylean™, Elanco™ and the diagonal bar logo are trademarks of Elanco™ or its affiliates. PM-2A-22-0069  
 ELANCO ANIMAL HEALTH, (CO. Reg. No.:1957/0002/1/0/1, Private Bag X119 Bryanston, 2021, Republic of South Africa, Tel.: (012) 657-6200 Fax: (012) 657-6216



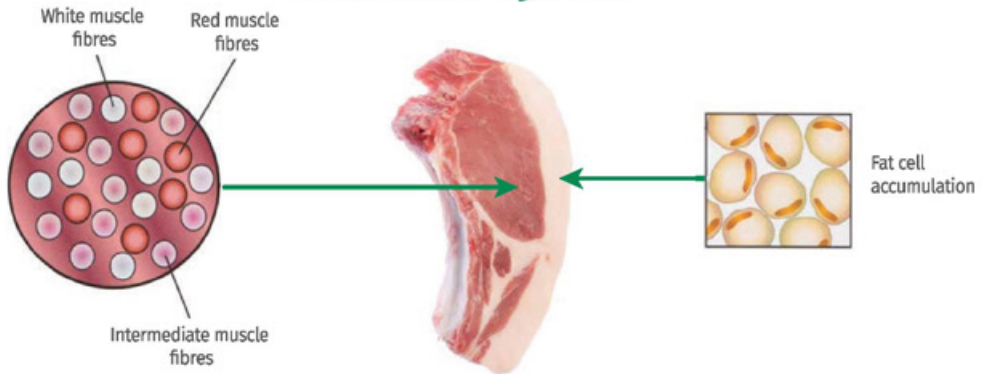
# How **Paylean**<sup>TM</sup> works

## Effect on fat and muscle:<sup>1</sup>

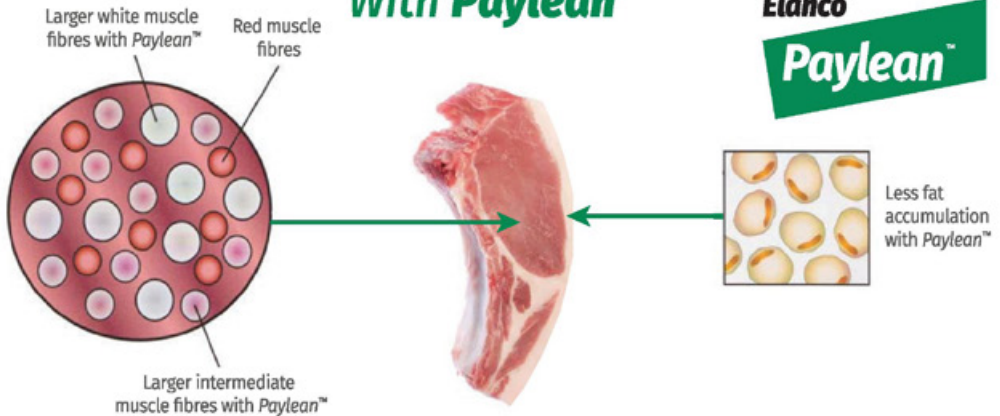
Elanco

**Paylean**<sup>TM</sup>

### Without **Paylean**<sup>TM</sup>



### With **Paylean**<sup>TM</sup>



# **Paylean**<sup>TM</sup>

## Pays Through:

- 10% or better feed efficiency <sup>2,3,5,6</sup>
- 10% or higher average daily gain <sup>2,3,5,6</sup>
- 3.0 kg or heavier hot carcass weight <sup>2,3,6</sup>
- 2.5 days earlier harvest <sup>4,6</sup>
- Consistent performance vs generic <sup>5</sup>
- Approved for use in 26 countries <sup>7</sup>
- Codex approved since 2012 <sup>8</sup>

References:

1. Schinckel, A and Finkbein, (1997), Concepts of Pig growth and composition, Dep. of Anim., Sci 1-10.
2. Apple et al. 2007 Review, Meta-Analysis of the Ractopamine Response in Finishing Swine, The Prof. Ani. Sci., Vol 23 179-196
3. Armstrong JA et al. 2004. The effect of dietary ractopamine concentration and duration of feeding on growth performance, carcass characteristics and meat quality of finishing pigs. J. Ani Sci 83 (11) p3245-3253
4. Henson TB et al., 2012. Effects of feeding ractopamine (Paylean<sup>TM</sup>) on growth and carcass traits in finishing pigs marketed at equal slaughter weights. The Professional Animal Scientist 2850-563
5. Bra a, D et al., Diverse sources of Ractopamine affect growth performance differently. IPVSp, 119.
6. Elanco Animal Health Data on File.
7. Elanco Animal Health Data on File.
8. Codex 2017, Maximum Residue Limits (MRLs) and Risk Management Recommendations (RMRs) for residues of Veterinary Drug Foods, Pp. 33

**Paylean**<sup>TM</sup> 20 Reg. No.: G2520 (Act 36/1947). Contains Ractopamine hydrochloride 20g/kg. For use in swine finisher feeds only.

**Paylean**<sup>TM</sup>, **Elanco**<sup>TM</sup> and the diagonal bar logo are trademarks of **Elanco**<sup>TM</sup> or its affiliates. PM-ZA-22-0089

ELANCO ANIMAL HEALTH, (co. Reg. No.:1957/000371/07), Private Bag X119 Bryanston, 2021, Republic of South Africa. TEL: (012) 657-6200 Fax: (012) 657-6216

**Elanco**





# UNLEASH THE GREEN REVOLUTION!

*World Focus Agri products act as an organic growth stimulant throughout the plants life cycle.*



**ORGANIC GROWTH STIMULANT**

**ORGANIC LEAF NUTRITION**

**MICRONIZED LIME GYPSUM**

**LAND CORRECTORS**



**World Focus Agri** will help you enhance plant vitality while protecting the environment and restore your land. We provide support for the agricultural community, **maximizing harvests of all crops through the process of introducing a natural product into the biological life cycle.**

**World Focus Agri concentrates on developing and producing organic as well as biologic growth stimulants and enhancers via root and leaf applicants.** Our ambitions, change the conventional view of plant protection to plant health via its biology.



Contact us

082 452 8983 | 083 542 3106  
at@worldfocusagri.co.za

[www.worldfocusagri.co.za](http://www.worldfocusagri.co.za)

Address: 9 Silver Crescent, Delmas, 2210

# WEALTH CREATION IS OUR MAIN OBJECTIVE.

## WEALTH TO NATURE, WEALTH TO THE FARMER.

The objective is twofold namely wealth to nature, therefore the slogan "NURTURE NATURE" and secondly wealth to our client, the farmer, by optimizing production.



World Focus is a company situated in Delmas, which is in the middle of the maize production area in the Highveld of South Africa, also only 60 kilometres away from the OR Tambo International Airport, the largest airport in South Africa.

World Focus concentrates on developing and producing organic as well as biologic growth stimulants and enhancers via root and leaf applicants.

World Focus changes the conventional view of plant protection to plant health via biology.



AT VAN SCHALKWYK  
Marketing Director

"Fifteen years ago, we started investigations and study of micro-organisms and the help that nature can provide to the farmer to get optimum crop production and welfare. We also started with the application of micro-organisms on land directly on the crops, with unpredictable and sometimes catastrophic results.

We then moved the study to the reason why we sometimes got positive results when living organisms were applied to the crop on land. The result is, we now do the biology in the factory in Delmas under controlled conditions.

From there Epipolthiediooperazynein (ETP), a natural enzyme is extracted and used as the active ingredient in a plant growth stimulant, called Gliogrow. Gliogrow is the product of many years of work with a registration in 2009. From here a variety of products, among other things Gliomax, Gliosense, Glionut, Gliograin and Gliocane • all registered products.

During 2012, we made a biochemical engineer part of our business and his first assignment was, facilitating the optimal application of Agricultural Lime. The outcome of the assignment is ultra-fine or micronized lime/gypsum ( $\text{CaCO}_3$ ,  $\text{MgCO}_3$ ,  $\text{CaSO}_4$ ) which is not in the place for normal liming but bring other options of applying and usage of lime to the farmer. Micronized lime is parent rock limestone directly from the mine processed in Delmas to a micro-fine milled product. (5% <math>1\mu</math>, 15% s

The micronized products are also registered with the Department of Agriculture and Fisheries under Act 36 of 1947 with B-numbers.

Our Gypsum is of the purest source known in South Africa. During the past seven years, we also develop a foliar-feed range, where the nutrients are chelated with an organic acid and various amino acids.

This range is called the Complex Super Range. During the past twelve years, we established a market in various production areas in South Africa, Namibia, Zambia, Mozambique and Malawi".

**Vision:**  
"Creating Wealth by using Innovative technology".

**Mission:**  
"Management of plant energy, enhancing soil and plant health, using different ranges of innovative products".

"Thank you for your interest and support".



JOE VAN DER MERWE  
Financial Director

"The pressure to produce more and better-quality food for the increasing population of the world, together with the ever-increasing input cost burden on farming, highlights the need for Innovative farming products and practices.

Because of all the technological advances being made in agriculture and the impact thereof on energy and water expenses, crop and land management as well as yield, agriculture is in the process of experiencing a major leap towards precision farming methods.

With these advancements, our company identified the opportunity to research and to develop technologically advanced products for the agricultural industry. Cost saving, waste reduction and soil quality, as the driving factors, lead to the development of micronized lime. Packing material waste is minimized, dried product leads to reduced volume and weight transported.

The result of reduced application volumes is reduced application cost. The product is compatible with all the precision farming equipment and is a valuable commodity for soil quality management. Micronized lime is applied with standard or precision spray applicators and moves lime to the precision commodity list.

Our production equipment was imported from leading international manufacturers and specifically built for micronized milling application. The plant has sufficient capacity to supply more than the expected demand for the product in the local market.

The benefits thereof have been recognised worldwide, increasing the demand for Micronized lime, especially In Africa where transport makes out a huge portion of production costs.

World Focus Agri products will help you enhance plant vitality while protecting the environment and restoring your land.

We provide support for the agricultural community, maximizing harvests of all crops through the process of introducing a natural product into the biological life cycle".

For our product range go to:  
[www.worldfocusagri.com](http://www.worldfocusagri.com)

Contact us today at.  
E-mail: [at@worldfocusagri.co.za](mailto:at@worldfocusagri.co.za)  
Cell: +27 (0) 82 452 8983





# CHOOSE ROSS 308

- Leading FCR
- Superior growth rate
- Enhanced livability
- Best return on your investment

Ross 308 - the best choice  
for the South African market

[www.aviagen.com/Ross](http://www.aviagen.com/Ross)



Ross Poultry Breeders  
Route 21 Office Park  
Block A Techno Link  
63 Regency Drive  
Irene  
Phone: +27 16 366 0249  
e-mail: [info@rpb.co.za](mailto:info@rpb.co.za)



Together we  
grow and sustain  
your business



Our passion for excellence helps you grow your business and establish yourself as a preferred supplier of perishable products.



45 Silverboom Ave  
Platteklief, Cape Town  
7560

Head Office  
T +27 21 930 1134  
F +27 21 939 6868

[www.ppecb.com](http://www.ppecb.com)

## HEALTHY COWS ARE PROFITABLE COWS

Innovative welfare solutions for cows

Andries Engelbrecht: 083 263 9675  
Werner van der Merwe: 083 700 2333



**FlexStalls™**

- ✓ Flexible cubicles - no pressure marks
- ✓ Healthier animals
- ✓ The lying time is improved
- ✓ The animal is lying more correctly
- ✓ Flexibility minimizes damages to the animal
- ✓ The lifetime and the yield improves dramatically
- ✓ Better oestrus conditions (healthy cows = better oestrus)
- ✓ Less consumption of bedding
- ✓ The cleaning time of the cubicles will be minimized
- ✓ The health of the udder will be improved (cleaner udder = better udder health)
- ✓ Adjustable for all breeds and sizes
- ✓ Easy and cheap installation
- ✓ Lower cost per animal per year



**FlexFeed™**

- ✓ Promotes appetite
- ✓ The animal consumes more feed
- ✓ The animal is able to consume more feed further out on the feeding table
- ✓ Calmer animals during food consuming
- ✓ Differentiated feeding places
- ✓ Adjustable width
- ✓ Animal welfare, healthier animals
- ✓ No marks and damages from equipment
- ✓ Higher earnings



**Cow-Welfare**  
FREEDOM FOR COWS

**LEADING edge**





[WWW.SHS.FARM](http://WWW.SHS.FARM)

# Y651 IPRO





## The First Y651 IPRO Soya Bean Harvest at SHS

The much-anticipated soya bean harvesting season is finally upon us and the team at Southern Hemisphere Seeds (SHS) is excited for their first soya bean harvest that contains the Intacta® Roundup® Ready2 Pro technology! The Y651 IPRO cultivar will not only place SHS at the forefront of GMO technology, but will also enable SHS to provide this technology to all South African farmers.

The first Y651 IPRO harvest at SHS marks the end of a long journey involving permit applications, evaluation processes, importation, testing, and public participation steps that needed to be adhered to in order to successfully introduce this new GMO technology into South Africa. For the last four years, the team at SHS has been assisting Bayer in their mission to bring Intacta® RR2 Pro technology to South Africa.

### What Makes the Y651 IPRO Soya Bean Cultivar So Special?

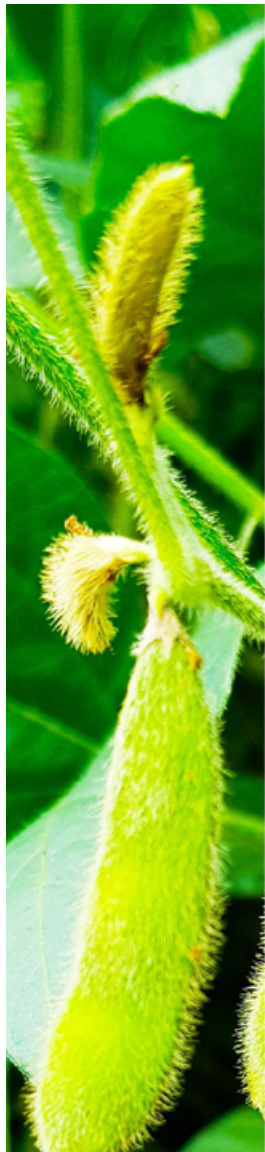
Statistics show that South American producers who have grown Intacta® soya beans commercially have seen an average 9,2% increase in yields since 2013/2014 (which means that Intacta® technology has added 20 million tons of soya beans to South American production since 2013). The Y651 IPRO soya bean cultivar (which contains Intacta® RR2 Pro) will protect against insect damage caused by common pests like the African bollworm. Intacta® RR2 Pro also provides glyphosate tolerance for weed management and can reposition the herbicide-tolerant trait on the DNA of the plant.

### South African Trial Results

Local small plot-regulated trials concluded that Intacta® RR2 Pro cultivars had an average yield advantage of 300 kg/ha compared to Intacta® RR1 cultivars. This means that both productivity and profitability are set to increase for soya bean farmers that cultivate this new technology. In the long run, this new technology may also cause local soya bean production to exceed South Africa's crushing capacity by far.

### In Summary

There has never been a better time to invest in better soya bean cultivars! If you would like to learn more about Southern Hemisphere Seeds' Y651 IPRO soya bean cultivar, then don't hesitate to email us at [farmyield@shs.farm](mailto:farmyield@shs.farm). You can also contact Candy at 081 490 9825 if you have any order enquiries.



## Y651 IPRO

### LEGEND

Resistant: 1 Tolerant: 2 Susceptible: 3 Highest: HH High: H Medium: M Excellent: 1 Very Good: 2

|                           |               |
|---------------------------|---------------|
| <b>GROUP</b>              | 6.5           |
| <b>TYPE</b>               | Indeterminate |
| <b>SEEDS P/KG</b>         | 666           |
| <b>BRANCHING</b>          | H             |
| <b>DAYS TO FLOWERING</b>  | 62            |
| <b>DAYS TO MATURITY</b>   | 154           |
| <b>LODGING RESISTANCE</b> | 3             |

### SPECIAL FEATURES

This cultivar is ideal for medium and high yield potential fields, showing a great adaptability to different conditions.

Medium branching and compact structure that allows it to be planted in narrower rows at higher density.

### DISEASE RESISTANCE

|                         |             |
|-------------------------|-------------|
| Phytophthora root rot 1 | Susceptible |
| Stem cancer             | Resistant   |
| Sclerotinia             | Medium      |





# SPECK X



## SPECK WATER MAINTENANCE

*made easy*

As a leading manufacturer of filtration and circulation systems in South Africa, and across the world, our range of reliable units meet the needs and requirements of various Agricultural operations. Our innovative solar solutions can be utilised to make water filtration and maintenance even easier.



[speck-pumps.co.za](http://speck-pumps.co.za)

**GET IN TOUCH**

**CAPE TOWN:** +27 21 704 1143

**DURBAN:** +27 31 700 8005

**JOHANNESBURG:** +27 11 455 4300

**PRETORIA:** +27 12 804 1294





+27 (0) 33 345 7400

25 Winston Road  
Pietermaritzburg, KZN

**MOVING PARTS**

TRACTOR SPARES  
EST 2014

# ALL SPARES FOR ALL TRACTORS



JOHN DEERE  
LEV BOX



JOHN DEERE  
TOP LINK



JOHN DEERE  
STABILIZER ARMS



JOHN DEERE  
BRAKE BANDS



JOHN DEERE  
DRIVE SHAFT SEALS



LANDINI  
BRAKE DISCS & PTO SHAFTS



MF7618 FUEL FILTER KIT



MF5000/6000 WATER PUMP



JD5000/6000 TAIL LIGHT

[www.movingparts.co.za](http://www.movingparts.co.za)

**WE DELIVER COUNTRY WIDE!**



LEE: +27 (0) 76 152 1554  
DUNCAN: +27 (0) 60 955 6619  
JYDEN: +27 (0) 63 741 4432

[lee@movingparts.co.za](mailto:lee@movingparts.co.za)



## GEVORDERDE CCTV-STELES WAT JOU DAG EN NAG OPPAS

**MET HIKVISION SE MENSLIKE  
OPSPORINGS CCTV KAMERAS,  
BEVEILIG ONS JOU PLAAS,  
JOU HUIS EN SOVEEL MEER**

- Hikvision gesertifiseerde sekuriteits installeerders.
- Die stelsel kan onderskei tussen mense, voertuie en diere, so minimale vals alarms. Vals alarm-risiko tussen 2% en 3%.
- Alles word op een toepassing gedoen.
- Werk op sontrag as die krag ofgaan.



Financing on CCTV installation available  
(The Rental Company, Bloemfontein)

+27 (0) 60 708 0114  
[dewald.jts@outlook.com](mailto:dewald.jts@outlook.com)

**juwald technologies & security**



From Producer to the World



## AN EXTENSIVE RANGE OF PASTURE, FORAGE & FIELD CROP SEEDS

to help support your farming operation

Improve your yield with Agricote<sup>®</sup>, coated seeds that offers better seed to soil contact, improved survival of seedlings through added nutrition.



**AVAILABLE SEED:** Teff • Babala • Forage Sorghum • White Buffalo Grass\*  
• Blue Buffalo Grass\* • Bristle Grass\* • Smuts Finger Grass\* • Rhodes Grass\*  
• Eragrostis\* • Bermuda\* • Kikuyu\* • Paspalum\* • Cowpea • Dolichos Bean •  
Lucerne\* • Vetch • Clover • Cocksfoot • Rye Grass • Rye • Oats • Japanese Radish  
• Open Pollinated Maize • Ground Nut • Dry Bean • Grain Sorghum • Sunhemp

*\*Agricote treated seeds*



Advance Seed

**Johannesburg:** 8 Jacobs Street, Chamdor, Krugersdorp, South Africa, 1740

Tel: +27 11 762 5261 • Fax: +27 11 762 4111

**Cape Town:** Tel: +27 21 552 0456 • **Kwa-Zulu Natal:** Tel: +27 33 346 0639

sales.za@agtfoods.com • www.agtfoods.co.za





Knowledge grows



uppe marketing A.29442/A

Die pad na hul hart ... loop deur hul maag

## Bolifor® Magnesium Fosfaat met swael (MGP+)

- 24% Magnesium en 13.5% fosfaat met bygevoegde swael (2%)
- Baie lae kalsiuminhoud (1%)
- Korrelvorm maak dit vryvloeiend en stofvry
- Uitstekende biologiese beskikbaarheid van beide Mg en P
- Bron van swael vir rumen mikrobes

*Innoverende oplossings in diervoeding!*

[www.yara.co.za/animal-nutrition/](http://www.yara.co.za/animal-nutrition/)

animal.nutrition.sa@yara.com | Tel: +27 (0)31 910-5100

Bolifor® MGP+ - Reg. Nr. V30204. Alle produkte geregistreer onder Wet 36 van 1947. Yara Animal Nutrition Suid-Afrika (Edms) Bpk. Reg. Nr. 2001/025850/07

# MULTI ONE®



## Vermeer® Equipment Suppliers

Vermeer Equipment Suppliers (Pty) Ltd.

Erf 5596 Proton Industrial Park, Proton Street,  
Chiborkop Ext 65, Gasteng Province, South Africa

Tel: +27 (0) 11 608 0893

Email: [info@vermeersouthafrica.com](mailto:info@vermeersouthafrica.com)

Website: [www.multi-one.co.za](http://www.multi-one.co.za)

**MULTI ONE**  
**MACHINE**  
**OVER 170**  
**ATTACHMENTS**







WAM<sup>®</sup> South Africa

info@wamgroup.co.za



WAM<sup>®</sup> AIR

## DUST COLLECTOR

**RECOGNIZED AS THE MOST  
VERSATILE COMPACT DUST  
COLLECTOR FOR INDUSTRIAL  
APPLICATION AVAILABLE  
WORLDWIDE.**



**zero**

Available with  
Nanofiber filter  
elements



Atex version  
available



UNI EN ISO 9001  
Certified Company



# THE RAINMAKER

[www.reinke.com](http://www.reinke.com)

Patrick Ellis | +27 (0)31 350 4525 | [patrickellis@reinke.com](mailto:patrickellis@reinke.com)





## VERSKAFFERS VAN CCA EN KREOSOOT BEHANDELDE PALE, LATTE & SPARRE

### GEBRUIKE:

- Hael en skudunette
- Wingerde
- Krale en kampe
- Wilds- en beesheininge
- Wildsbomas
- Grasdakke
- Krag- en kommunikasie lyne

Koop direk vanaf die vervaardiger met meer as 22 jaar se ondervinding. Met 20 000 ton se voorraad kan enige bestelling groot of klein, vining en effektief gelever word. Ons lewer ook 'n verskeidenheid gesaagde hout- en huisverbeteringsprodukte. Op ons perseel het ons ook 'n hardewarewinkel waar u al die basiese behoeftes vir u projek maklik kan koop. Ons kundige personeel sal advies gee oor u navrae en u help om die regte materiaal en gereedskap aan u te verskaf.

MELD DIE  
NOMMER EN  
KWALIFISEER VIR  
'N ADDISIONELE  
5% AFSLAG.

LANDBOU 123

Ons lewer af in enige land. Afslag op volume beskikbaar.



[www.britspoles.co.za](http://www.britspoles.co.za)

Kontak: Alicia Brink  
+27 (0) 12 944 7060 | +27 (0) 76 840 2482  
alicia@britspoles.co.za

© IVES CON SA



Rustenburg Depot  
Old Northam Road,  
Boitekong, langs Lusaka Crushers,  
Rustenburg

Brits Express  
Gedeelte 9,  
R104, Zandfontein,  
Langs Zanadi  
Brits





# Laat ons na jou verkoeling omsien sodat jou span op die kernbesigheid kan fokus

Ons is 'n vlak 4 BEE geakkrediteerde verskaffer



**ENERGY PARTNERS REFRIGERATION**

Vir meer inligting oor verkoelingsprojekte, -dienste en instandhouding of CaaS, epos [refrigeration@energypartners.co.za](mailto:refrigeration@energypartners.co.za)

[www.energypartners.co.za/refrigeration](http://www.energypartners.co.za/refrigeration)

Kontak: 010 276 0125

Energy Partners HVAC & R (EDMS) BPK | Eenheid 5 & 6, Samrand Besigheidspark | Sterlingstraat 2, Samrand, Centurion



**TONEL WORKWEAR** manufactures a wide variety of workwear that can be customised to suit your company or an event's needs.

**TONEL WORKWEAR** offers customised embroidery and screen printing to brand your workwear with your company logo. If your industry requires high visibility for safety; we can apply reflective- or fluorescent tape to any of our garments.

**CORE WORKWEAR | KHAKIS | WARM WEAR  
HOSPITALITY | MEDICAL | TEES & POLOS  
PANTS | SHOES & CAPS**

**083 704 0144**  
[www.tonelworkwear.co.za](http://www.tonelworkwear.co.za)





# FERTASA

Fertilizer Association of Southern Africa  
Reg. Nr. 1971/000012/08 | VAT Reg. Nr. 4830104164

## FERTASA, CERTIFIED CREDIBILITY



Fertasa and its members are committed to the promotion of sustainable soil fertility and enhanced plant nutrition.

Tel: +27 (0) 12 349 1450  
Email: [general@fertasa.co.za](mailto:general@fertasa.co.za)



**DR PIETER HAUMANN,**  
CEO, FERTASA

[www.fertasa.co.za](http://www.fertasa.co.za)



**MR. HENK LE ROUX**

Chairperson during the  
2021 financial year



**DR. JOHN PURCHASE**

Previous CEO of AgBiz



**MR. THEO BOSHOFF**

New CEO of AgBiz



**DR. PIETER TALJAARD**

CEO of Grain SA



**PROF. THEO VENTER**

Independent Political Analyst

# 2022 FERTASA AGM AND CONGRESS

THE 63RD FERTASA AGM WAS HELD VIRTUALLY ON THE 12TH OF APRIL 2022

by Dr Pieter Haumann, CEO, Fertasa

The Chairperson for the meeting was Henk le Roux in his capacity as Chairperson of the Fertasa Board of Directors for the 2021 financial year. The Annual Financial Statements for the year ended 31 December 2021 for the Fertilizer Association of Southern Africa NPC were approved, as well as the appointment of the current auditors MFG Accountants Inc., for the next year.

The Chair of the Fertasa Board, Henk le Roux (NWK) and the Vice-Chair, Rian Briedenhann (InteliFert) had resigned from the Fertasa Board of Directors due to retirement and company reorganization, respectively. Both were thanked for their tenure as directors of Fertasa.

Pieter Henning from Industrial Commodities Holdings and Tom Mason from Metson World were elected as directors in their place. Both these directors were congratulated and wished a long and successful tenure.

The new Chair and Vice-Chair will be duly elected after the necessary nomination and election process and will be announced within the next month.

## THE FOLLOWING AWARDS WERE ANNOUNCED:

**Honorary membership:**  
Pieter van Niekerk (2021)  
Dr. André Nel (2021)  
Dr. John Purchase (2022)

**Excellence and Appreciation Award:**  
Dr. Nicole Hart. (2021)  
Mr. Henk le Roux (2022)

**Gold Medal: for lifetime service to the Agricultural Industry**  
Prof. Piet Steyn (2021)  
Dr. JJ (Koos) Bornman (2022)

These awards will be done at an awards ceremony to be held later this year.

The 62nd Fertasa Annual Conference was held on

the 13th of April. The theme was: "Lessons Learnt from Covid-19 Pandemic"

The Fertasa annual report was presented by Henk le Roux in his capacity as Chairperson during the 2021 financial year. The Fertasa annual report is available on the Fertasa Website.

## THE FOLLOWING PRESENTATIONS WERE MADE:

**Dr. John Purchase (previous CEO of AgBiz)**  
"SA Agribusiness in the "VUCA" World, Building Partnerships to Sustainability"

**Mr. Theo Boshoff (new CEO of AgBiz)**  
"Legislative Lessons and Challenges"

**Dr. Pieter Taljaard (CEO of Grain SA)**  
"Crop Production Lessons and Challenges"

**Prof. Theo Venter (Independent Political Analyst)**  
"Making Sense.....Politics through the Prism of a Pandemic"

The presenters succeeded in outlining and discussing the relevant Business, Legislative, Crop production environment and Political situation of South Africa as affected by, not only the Covid-19 impact but also by current turmoil globally. They gave sound advice on what needs to be done and by whom for survival and success.

All the presentations, thanks to our presenters, are available on the Fertasa Website for perusal.

The next Fertasa event is the annual Soil Fertility and Plant Nutrition Symposium to be held on the 24th and 25th of August. Focus will be on "Plant Nutrient Efficiency: Challenges of Quantification". Fertilizer prices and most other inputs for crop production are extremely high. Fortunately, grain prices are also at a premium. How do crop producers manage all the variables? What principles should be followed when fertilizing?

We are inviting experts on this to advise us during the Symposium and follow-up workshop.

**BOOK THE DATES!!**

Announcements will be made in due course.



# AIR **ASC** SERVICE CENTRE

[www.airservicecentre.co.za](http://www.airservicecentre.co.za)

Call : 012 804 0592

Sales : 073 033 9804

Email : [Info@airservice.co.za](mailto:Info@airservice.co.za)

24/7 Stand-by : 083 706 2850



**Oil lubricated Screw Compressor**

The freedom to do what you want, when you want, wherever you want.



**engineAIR**



**Dryer**



**Inline Filters**



**Piston Compressors**



**Service & Parts**





[WWW.UITZICHTSAND.CO.ZA](http://WWW.UITZICHTSAND.CO.ZA)

+27 (0) 82 085 9435 | +27 (0) 82 896 2041  
uitzicht.transport@gmail.com



© MIES COV SA

## SERVICING & ASSEMBLING OF ANY AND ALL PUMPS

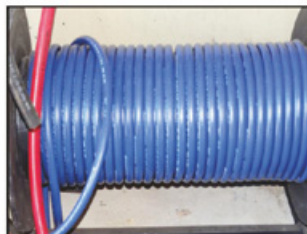
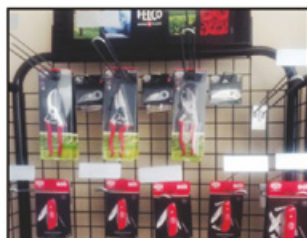
### SUPPLIER OF SPRAYING PARTS

\* STOCKIST OF QUANTUM & ARAG \*

#### WE SUPPLY:

- Nozzles
- Nozzle Holders
- Jacto
- Pumps
- Strainers
- Clamps
- Hoses
- Fittings
- Tanks
- Installations
- Hydraulic Pumps
- Spraying Equipment
- Pruning Shears

Pieter : +27 (0) 60 960 6038  
Jackie : +27 (0) 60 962 5904  
Email: [sputparte@gmail.com](mailto:sputparte@gmail.com)



© MIES COV SA



## OCMIS

### HARD HOSE IRRIGATORS

Versatile & cost effective method of irrigation.  
Ocmis Irrigators are a quality product engineered to perfection.

Visit us at  
**NAMPO**  
Stand C30



### ALL BLACK SYSTEM PIPES & FITTINGS

- Reduce theft & corrosion
- Easy & cheap to repair
- Lightweight
- Easy conversion from other systems
- Resistant to chemicals & fertilizers



### IRRIGATION & MANURE GUNS



[www.iunlimited.co.za](http://www.iunlimited.co.za)

Pretoria – 012 736 2121

Cape Town – 021 946 1194

SCAN ME



# OPLOSSINGS VIR BESPROEIINGSBOERE

Irrigation Unlimited bied veelsydige, kostedoeltreffende ingenieurswese van topgehalte uit Italië. In sy reeks is verskeie pyp- en mobiele besproeiers.

Pypbesproeiers, ook genoem traveller and hard hose-masjiene, sluit in mobiele waterkanonne of spuitbalke wat die gewasse besproei, terwyl dit oor 'n land beweeg. Bykans al dié besproeiingsopsies is wateraangedrewe.

Pypkatroltegnologie het teen die einde van die 1960's in Frankryk die lig gesien. Tans is daar wêreldwyd sowat 11 vervaardigers, waarvan die grootste twee Ocmis en Bauer is.

Ocmis het in die laat 1990's met grootskaalse vervaardiging van pypbesproeiers begin en die wêreldleier geraak in die vervaardiging van hierdie soort besproeiingstegnologie. In Suid-Afrika voer Irrigation Unlimited Ocmis se mobiele besproeiingstelsels in.

Ocmis se mobiele besproeiingstelsels is 'n veelsydige en kostedoeltreffende besproeiingsmetode. Dit het slegs vir 'n kort tydjie 'n enkele operateur nodig. Daarna werk die toestel op sy eie voort.

Die raamwerk van die toestel is van sterk staalbalke en is met robottegnologie aan mekaar gesweis. Die drom is om 'n kompakte struktuur vervaardig. Die poliëtileenpyp van topgehalte is vervaardig om sterk sleepweerstand te deurstaan en 'n smoorvloei-turbine is ontwerp om verliese te verminder. Die poliëtileenpyp katrol outomaties af wanneer die waterkanon se trollie oor die land gesleep word.

Wanneer die masjien begin besproei, rol die pyp terug op die drom en dan beweeg die



Ocmis se mobiele besproeiingstelsels is 'n veelsydige besproeiingsmetode wat slegs een operateur vir 'n kort tydperk benodig

**BO:** Ocmis-kruipspuite is doeltreffend op enige terrein en lande van enige vorm. Pypbesproeiing soos hierdie is 'n tipe oorhoofse besproeiingstelsel, bestaande uit 'n poliëtileenpyp wat om 'n staaldrom gedraai en op 'n trekbare raamwerk gemonteer is. Die poliëtileenpyp is deur middel van 'n flens aan 'n trollie gekoppel, met 'n waterkanon aan die bokant. Die pypbesproeiër is wateraangedrewe.

**REGS:** Die Ocmis R2/2 kan 'n baan van 300 m besproei.



[WWW.UNLIMITED.CO.ZA](http://WWW.UNLIMITED.CO.ZA)

waterkanon se trollie oor die land. Die waterkanon draai op sy as van 'n minimum van 30 grade tot 'n maksimum van 270 grade.

Die lengte van die poliëtileenpyp kan wissel. Die vloeihoers kan ook gereguleer word. Die vloeihoers wissel na gelang van die deursnee van die waterkanon se plastiekspuitstuk.

'n Spoedkompensator reguleer die hoeveelheid water deur die terugkeerspoed van die trollie aan te pas.

## VOORDELE

- Die harde pyp-masjiene is nie vaste stelsels nie.
- Dit verskuif maklik vir gebruik op verskillende lande. Hulle kan padlans vervoer word.
- Dit kan landerye met onewe oppervlakke besproei.
- Dit is gebruiksgereed en verg geen voorbereiding nie.
- Dit kan alle soorte gewasse besproei.
- Dit is gebruikersvriendelik en kostedoeltreffend.

Geskryf deur Landbou Weekblad

## NAVRAE:

Besoek standplaas C30 op die Nampo-Oesdag of kontak Irrigation Unlimited.  
+27 (0) 82 658 6054 | +27 (0) 12 736 2121 (Pretoria) | +27 (0) 21 946 1194 (Kaapstad)





LET'S DO THE WORK.™

www.catpowertools.co.za

**WORX**  
it's your nature

**20V POWER SHAR**

Pickup for loading  
 Foldback support legs  
 Flipback flap  
 Double backrest  
 Wheel  
 Bag holder  
 Flat mower stop  
 Mesh rock mower

worktools.co.za

**TorkCraft™**

Tools for every job

www.torkcraft.com

Tools for every Job



**WORX**  
you've got the power

**SLAMMERDRILL**  
**6Q Nm**

**20V POWER SHAR 2.0Ah**  
SAME BATTERY, EXPANDABLE POWER

AS SEEN ON TV

**ALL YOU NEED IS SLAMMER DRILL**  
DRILL-DRIVER-ACTIVE HAMMER

The Slammer has everything you need and then some for every job around the house. This 20V Cordless Impact Drill Driver features new Active Hammer technology, which creates enough force to drill through the hardest surfaces, even concrete. For everything you'll ever need in an everyday drill, grab the Slammer!

**Active Hammer Technology TRANSMITS MASSIVE FORCE TO THE DRILL**  
This energy is stored in the cam and spring and released in a flash. This amplifies the impact force and increases efficiency.

**Powering up Big & Hammer Drilling ONE SOLUTION FOR ALL APPLICATIONS**  
The variable 2-speed gear design with 18 torque settings covers a wide range of drilling, fastening and hammer drilling applications.

**BRUSHLESS MOTOR**

No Load Speed: 0-600/0-2500/min  
Impact Rate: 0-1800/0-45000rpm

**WX354.1 includes**

- 1x 20V Cordless Slammer Drill™
- 1x Battery Charger
- 1x 6Ah Battery
- 1x 2Ah Battery
- 1x Belt Clip
- 1x Double ended screwbit
- 1x Carry Case

**Drilling Capacity:**  
40mm Wood, 16mm Masonry, 13mm Steel, 10mm Concrete, 15mm Reinforced Concrete

worktools.co.za

They always say make hay while the sun shines. We say make hay, but insure it!

My broker told me that.

[hollard.co.za](http://hollard.co.za)

**Hollard.**

business • agriculture • marine • engineering • trucking

Underwritten by The Hollard Insurance Company Limited (Reg. No. 1952/003004/06), a Licensed Non-Life Insurer and an authorised Financial Services Provider

Soygro Soygro Soygro



Morné de Villiers  
083 792 1908

Elizna van der Merwe  
083 792 1909

Andries Nienaber  
083 792 1910

SOYGRO (PTY) LTD  
Berts Bricks Road nr. 7,  
Mooibank, Potchefstroom.  
E-mail: [soygro@iafrica.com](mailto:soygro@iafrica.com)  
Web: [www.soygro.co.za](http://www.soygro.co.za)

TOP FARMERS USE SOYGRO INOCULANTS!

BIG or SMALL  
we have them ALL

[PlasticCrates.co.za](http://PlasticCrates.co.za)



**plastic ideas**  
crates

Tel. +27 11 613 8587 • Cell. +27 83 333 1224 (Gilda)

E-mail: [crates@plasticideas.co.za](mailto:crates@plasticideas.co.za)

427 Southern Klipriviersberg Road, Steeledale, Johannesburg, South Africa



# DICLA HORTICULTURE

*Your one-stop solution for all your vegetable farming needs.*

- Greenhouse Tunnels
  - Sprinkler Irrigation
  - Tunnel Plastic
  - Drip Irrigation
  - Seedlings
  - Shadenet
  - Fertilizer
  - Fungicides
  - Insecticides
  - Mist Blowers
  - Grow Medium
  - Irrigation Pipes
  - Irrigation Fittings
- and more...*



*Come say hi! We are happy to help!*

Plot 11 van Wyksvlei  
N14 Service Road  
Opp Cradlestone Mall  
Muldersdrift, Krugersdorp

011 662 1371  
071 400 3048  
www.dicla.com  
sales@dicla.com

*We courier nationwide...*

# OVITECH



## DRAAI EIERS OM IN 'N WAARDEVOLLE BESIGHEID

EIER-GRADERING OPLOSSINGS, ALLES IN EEN MANDJIE.

DIENS VAN EIERMASJINE

Ovitech is in 2008 gestig deur die huidige 3 direkteure. Op daardie stadium het ons reeds jare ondervinding in die pluimveebedryf gehad, spesifiek eier-gradeer masjiene en verwante toerusting.

Ons het vroeg reeds 'n samewerkings ooreenkoms met Sanovo (Staalkat) bereik en n jaar later is die Suider Afrikaanse agentskap aan ons toegeken.

Ons reputasie het spoedig die aandag van ander rolspelers getrek en ons het nog 3 agentskappe bekom.

Die ander maatskappye wat ons verteenwoordig is Nuovo, Gi-Ovo en Ovo-Tech. Ons is vandag die leiers in verkope van nuwe toerusting in pakstasies in Suidelike Afrika.

Johan Conradie - +27 (0) 82 894 4507  
Dewald Wenholdt - +27 (0) 82 709 8426  
Freddie Haan - +27 (0) 82 874 4174  
Jaco Henning - +27 (0) 73 415 4341  
Epos: admin@ovitech.co.za

© MES CON SA



Sanovo Technology Group  
Eiersorteerder en Eier Farmpacker

Nuovo  
Drukwerk op eiers van verval datum/kodes

Gi-Ovo  
Plastiekhouders en pallette

Ovo-Tech  
Eierbreek en skei-masjiene

ONS LEWER  
LANDWYD & SUIDELIKE  
HALFROND AF



OVO TECH SANOVO  
EGG PROCESSING MACHINES TECHNOLOGY GROUP

GI-OVO  
EGG TRAYS & PALLETES

NUOVO  
EGG MARKING MACHINES

## S.T.M. South Africa SPECIALISED TRANSMISSION & MECHANICAL SERVICES SOUTH AFRICA

S.T.M. SOUTH AFRICA MANUFACTURES THE WIDEST AND BROADEST RANGE OF GEARBOXES AND GEARED MOTORS.



© MES CON SA

### EMPOWERING YOUR IDEAS



WWW.STMSA.CO.ZA

#### HITECH (Heavy Duty, Industrial and Motion Gearboxes)

High Tech Gearboxes and Geared Motors are designed to provide the best results in those applications requiring top performance in continual use. High Tech Gearboxes: When durability is the best.

#### STANDARD (Automation and Basic Gearboxes)

Standard Gearboxes and Geared Motors, thanks to their flexibility in application, are the solutions which ensure the best value for money.

#### ELECTRONIC

Electronic Motors and Motovariators are an important reference in every control integrated system for logistics.

#### CUSTOM

Custom Gearboxes and Geared Motors provide the most suitable solutions to those requests for the development of a specifically intended product for customers' special applications.



Boksburg:  
+27 (0) 10 010 6879  
sales@stmsa.co.za

22 Lorna Road, Anderbolt,  
Boksburg North

Durban:  
+27 (0) 31 700 2282  
+27 (0) 31 700 2558  
salesdbn@stmsa.co.za

Cape Town:  
+27 (0) 10 010 6879  
salesct@stmsa.co.za





# BOER VOLHOUBAAR, BOER VOORKOMEND

© MES CON SA



## KRISTAL TEGNOLOGIE

### DIE OPLOSSING VIR EFFEKTIEWE PLAAGBEHEER

Kan jy beskosig om daarsonder te boer?  
Plaaigbeheer was nog nooit so maklik nie

- Spesiesesifiek en eko-vriendelik, koste effektief
- Beheer jou plaë deur slegs foto's te neem, die kontrole is in jou hande
- Van die foto's af kan ons enige plaag beheer op jou plaas oral in die wêreld
- Verbeter produksie en kwaliteit in 'n onseker tyd teen lae kostes
- Die enigste gewaarborgde plaagbeheer in die wêreld en oordragings kan op die plaas gemonitor word.

JY KAN NOU BOER IN 'N EKO-VRIENDELIKE EN ONDERHOUBARE MANIER



Besigtig ons aanlyn by: [www.agrifrequencies.com](http://www.agrifrequencies.com)  
Jan du Plessis +27 (0) 82 429 4055 | [info@agrifrequencies.com](mailto:info@agrifrequencies.com)



Gebruik u nogsteeds

# Gif?

Beproof die goedkoop, gesonde alternatief:

## KRISTAL TEGNOLOGIE

KRISTALTEGNOLOGIE BIED OMGEWINGSVRIENDELIKE, GEVORDERDE SPESIESPESIFIEKE PLAAGBEHEER!

Kristalfrekwensies is onskadelik vir die mens en teiken spesifieke spesies, enige plek in die wêreld, chemies vry sonder om ander spesies soos bye en predatore aan te tas.

Agri Frequencies se gevorderde stelsel is aanpasbaar vir mutasies en variasies binne spesies.

Kwantumkoppeling word gebruik om die frekwensies onmiddellik op enige oppervlakte in die wêreld te plaas en is meetbaar.

Frekwensiebehandeling is baie meer doeltreffend as chemiese behandeling teen 'n fraksie van die

koste. Chemikalieë raak ook minder doeltreffend omdat die insekte weerstand opbou.

### Om die beste resultate te behaal?

Wanneer jy AgriFrequencies se oesbeskermingspakket neem is dit belangrik om akkurate inligting oor die insekte wat pla deur te stuur, sodat die regte frekwensies teruggestuur kan word.

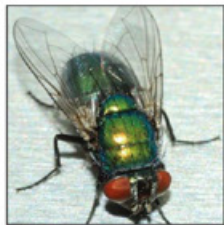
Gereelde foto's moet geneem en deurgestuur word en kleiner insekte of swamme kan deur middel van 'n mikroskoop waargeneem word. Ons maak dit maklik deur 'n laekoste mikroskoop beskikbaar te stel wat jy aan jou rekenaar koppel om die beeld vas te lê en deur gestuur kan word.



Kristal tegnologie kan ingespan word vir 'n baie wye reeks toepassings nl:

- Beheer virusse, bakterieë, swamme, plant- en dieresiektes;
- Insek en plaagdierbeheer soos rotte, voëls ape en jakkalse;
- Stimulering van grondorganismes vir beter plantgroei en opbrengsgehalte;
- Verbeterdie gehalte en opname van voeraanvullings, mikro- en makroelemente en pas pH van die grond aan;
- Besproeiingslyne en druppers kan skoongemaak word van kalk-aanpaksels;
- Dood alge in damme en swambadens, chemiesvry;
- Duiwe en vlermuise kan verjaag word in 'n straal van tot 200 meter en,
- Huishoudelike produkte is beskikbaar vir plaagbeheer (Pest Vibes), beter groei en beskerming teen rypskade (Tuinfeetjies), verminderde watergebruik (Aqua Struct), persoonlike gesondheid (Wellness-hangertjies) en 10-15% beter brandstofverbruik deur die strukturering van brandstof (Auto Struct).

Identifiseer jou plaag met behulp van 'n Agri Frequencies-mikroskoop. 'n Volledige pakket van insekbeheer en groei vir boere kos slegs R1 200.00 per hektaar per jaar. Korting vir groter plase beskikbaar!



© MIES CON SA

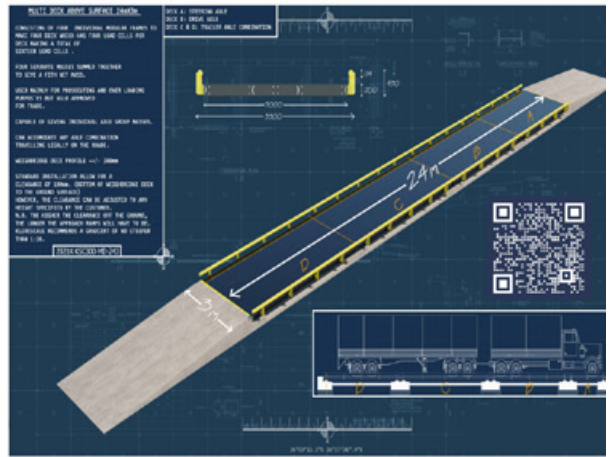
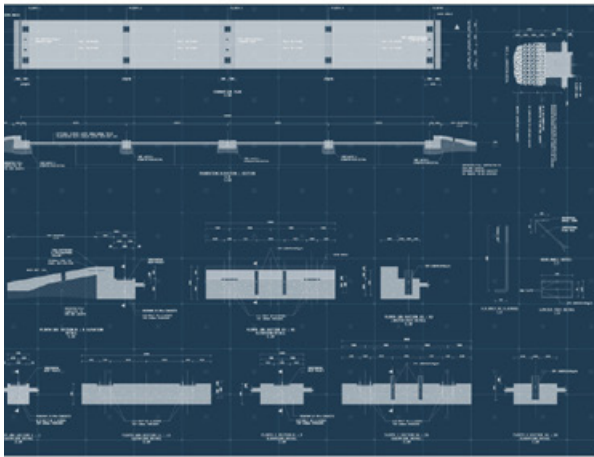
Jan du Plessis: +27 (0) 82 429 4055  
info@agrifrequencies.com  
Instagram crystalcures\_1 en fb crystalcures1.





# SPECIALISED WEIGHBRIDGE MANUFACTURER

Visit our website for more information  
[WWW.KLERKSCALE.CO.ZA](http://WWW.KLERKSCALE.CO.ZA)



**SERVICE AND MAINTENANCE OF ALL WEIGHING EQUIPMENT**



- ROAD VEHICLE WEIGH BRIDGES
- CONTAINER WEIGHBRIDGES
- OFF-ROAD VEHICLE WEIGH BRIDGES
- AXLE WEIGH BRIDGES
- RAIL WEIGH BRIDGES
- HEAVY DUTY PLATFORM SCALES
- RETAIL SCALES

## ADVANCED TECHNOLOGY & SOFTWARE IN INDUSTRIAL WEIGHING SYSTEMS

Klerkscale was founded in 1958 to meet the high demand in weighing machines. We manufacture locally in order to serve Industry and Commerce throughout South Africa and its neighbouring countries.



+27 (0) 18 469 1371 | [INFO@KLERKSCALE.CO.ZA](mailto:INFO@KLERKSCALE.CO.ZA)



**WATER TANK STANDS**

- 2.5KL, 5KL AND 10KL STANDS
- HEIGHTS FROM 1.5M UP TO 12.0M



**STEEL PANEL RESERVOIRS**

- 15KL UP TO 4 000KL
- HEIGHTS FROM 1.3M UP TO 6.1M
- BETTER RESISTANCE TO WIND DAMAGE
- 25 YEAR LIFE EXPECTANCY



**STEEL DOME ROOFS**

- AVAILABLE ON ALL RESERVOIR SIZES
- DESIGNED FOR WIND SPEED UP TO 140KM/H
- STRUCTURE IS FULL HOT-DIP GALVANISED
- SHADE NET COVERS AVAILABLE ON ALL RESERVOIRS


**SAVE TODAY!**

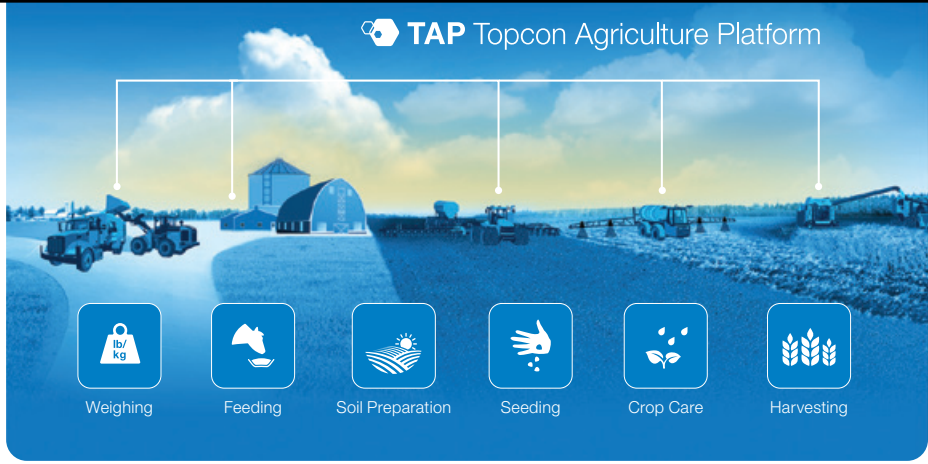
**COST EFFECTIVE 10 YEAR WARRANTY ENGINEER DESIGNED**


[WWW.STAALBOER.CO.ZA](http://WWW.STAALBOER.CO.ZA)


OUR EXPERT TEAMS ARE AVAILABLE TO DO INSTALLATIONS COUNTRY WIDE AND CROSS BORDER


✉ [ADMIN@STAALBOER.CO.ZA](mailto:ADMIN@STAALBOER.CO.ZA)  
📞 **+27 (0)12 010 0095** 📍 **PRETORIA**








  
 Weighing

  
 Feeding

  
 Soil Preparation

  
 Seeding

  
 Crop Care

  
 Harvesting

**We have solutions to improve every aspect of your farm workflow, while increasing efficiency. Be precise and have the data you need by using Topcon Technology.**

Boost your yields and productivity now.

Visit [www.topconpositioning.com/agriculture](http://www.topconpositioning.com/agriculture)



Email: [chelm@topcon.com](mailto:chelm@topcon.com) Tel.: +27832335497



# Jou SENTER 360 is aanlyn...is jy?

**Senter**  
TECHNOLOGIES 360

## >>> JY VERTROU ONS REEDS OMDAT ONS...

- Die sterkste struktuur in die industrie het
- Die betroubaarste produk het
- Die beste sprinkelpakkette het



[WWW.SENTER360.CO.ZA](http://WWW.SENTER360.CO.ZA)

Vir die beste diens kontak ons by:  
+27 (0) 18 469 1331 | +27 (0) 82 564 5955



'n Nuwe  
beheerstelsel  
met **omvattende  
selfoon-/internet-  
kommunikasie...**  
en dit is **standaard-  
toerusting\*\***

\*\*Terme en voorwaardes geld





**UNION**  
ENGINEERING  
BLOEMFONTEIN  
SINCE 1952

**WWW.UNIONENGINEERING.CO.ZA**

UNION ENGINEERING - BLOEMFONTEIN

5 Maroelastraat, Oos Einde

+27 (0) 51 448 1100

admin@unionengineering.co.za

GPS: -29.12136 , 26.23118

## HOË FREKWENSIE GRAANSIF. TOT 120T/H (MIELIES)

- Plaaslik vervaardig
- Mobiele eenhede beskikbaar
- Huur masjiene beskikbaar (onderhewig aan beskikbaarheid)
- 3 Jaar waarborg



Andre Geeringh  
+27 (0) 82 578 2362  
andreg@unionengineering.co.za



WH Stander  
+27 (0) 82 792 1163  
wh@unionengineering.co.za



# WAYNE



GUMBOOT SPECIALISTS FOR

## 80 YEARS

& COUNTING



## FROM THE FACTORY TO THE FIELDS, THERE'S A WAYNE GUMBOOT FOR YOU



At Wayne, we know all about the dangers you face when you're working in the fields – and we know how important all-day comfort is for those long hours on your feet.

For 80 years and counting, Wayne has been providing the agricultural sector with the best in superior safety gumboots. As leading specialists in our field, we focus on what we do best – gumboots, and gumboots only – allowing us to become pioneers in our industry, delivering consistently excellent and innovatively designed gumboots manufactured from world-class materials and components.



EGOLI 1



DURALIGHT



PUREMAX

BBF SAFETY GROUP



[www.wayne-safety.com](http://www.wayne-safety.com)



## SUPPLIERS OF STEEL AND RELATED PRODUCTS.

**YOUR ONE STOP ENGINEERING AND STEEL SHOP, THAT MEETS ALL INDUSTRIAL AND HARDWARE DEMANDS.**

Our aim is to give you a single company that will not only meet these demands, but will assist your company to focus on what you do best while we supply you with quality materials or finished products.

### SUPPLIERS OF THE FOLLOWING PRODUCTS:

- Electrical Brushes
- Industrial Chains
- Sprockets
- Special Steels (Stainless)
- Steel & Tubing
- Tube Bending
- General Engineering
- Universal Beams
- Channels & Rails
- Fencing Products
- Bars - Round, Flat & Square
- Angles Equals
- Plates - All variants
- Hardware and loads more

[WWW.MEONDOTRADING107CC.CO.ZA](http://WWW.MEONDOTRADING107CC.CO.ZA)  
[info@meondotrading107cc.co.za](mailto:info@meondotrading107cc.co.za)

CONTACT:

Carel Coetzee  
+27 (0) 82 616 6226

Sales:  
+27 (0) 64 502 6835

© MES CON SA

SCAN ME



## MANUFACTURER AND INSTALLER OF PRECAST CONCRETE WALLING

Precast Walling | Concrete Palisades | Ranch Rails | Retaining Blocks | Paving Blocks

GREAT CARE IS TAKEN TO ACCOMMODATE EACH CLIENT'S PARTICULAR NEEDS BY EMPLOYING INCLUSIVE COMMUNICATIONS DURING EVERY STEP OF THE PLANNING AND CONSTRUCTION PHASES.

ESTABLISHED IN 1957, EAST RAND WALLING (PTY) LTD IS THE AUTOMATIC CHOICE FOR QUALITY CONCRETE WALLING PRODUCTS AS WELL AS PROFESSIONAL AFTER SALES SERVICE.

### SERVICES

- Erecting New Concrete Precast Walls
- Concrete Wall Repairs
- Wall Raising and Wall Extensions
- Dismantling of Concrete Precast Walls
- Re-erecting of Concrete Precast Walls



### PRODUCT RANGE

- Prefabricated Concrete Walls
- Colombo Precast Walls
- Heavy Duty Concrete Prefabricated Walls
- Ranch Rails
- Concrete Palisade Fences
- Steel Gates

[www.erw.co.za](http://www.erw.co.za)

Galvin: +27 (0) 82 607 1384

© MES CON SA



[WWW.TALBERT.CO.ZA](http://WWW.TALBERT.CO.ZA)

WE FOCUS ON PERFECTION

## WE MANUFACTURE HIGH QUALITY CENTRE PIVOTS

OUR PIVOTS ENSURES OPTIMUM PRODUCTION, EFFICIENCY & MANAGEMENT.

WE BUILD LASTING PARTNERSHIPS.



+27 (0) 82 451 3754  
+27 (0) 72 344 0683  
+27 (0) 51 435 7778

[douw@talbert.co.za](mailto:douw@talbert.co.za)  
talbert pivots pty ltd

© MES CON SA





# OLI VIBRATORS

## EFFICIENT DISCHARGE SOLUTION

©MES CON SA

# DESIGNED FOR AGRICULTURE

OLI OFFERS TECHNICAL ADVICE WITH PRODUCT SIZING

- PRODUCT FLOW AIDS: HOPPERS, BINS, SILOS & CHUTES
- VIBRATING SCREEN APPLICATIONS

### OLI'S PRODUCT RANGE INCLUDES:

- Electric motor vibrators
- Pneumatic linear & rotary vibrators
- Aerators
- Hydraulic vibrators
- Pneumatic hammers



OLI South Africa (Pty) Ltd

+27 (0) 11 392 1054 | Peet Eksteen: +27 (0) 60 564 5560

Sales & Enquiries: [sales.southafrica@olivibra.com](mailto:sales.southafrica@olivibra.com)

[www.olivibra.com](http://www.olivibra.com)



# OLI IS THE WORLDWIDE LEADER IN INDUSTRIAL VIBRATION TECHNOLOGY

MAKING BUSINESS SIMPLER FOR CUSTOMERS WHILE GOING GLOBAL WITH A FIRST-CLASS PRODUCT HAS PROVED SUCCESSFUL IN MAKING OLI THE WORLD'S TOP SELLING COMPANY OF ELECTRIC EXTERNAL MOTOVIBRATORS.

WHEN YOU NEED IT, WHERE YOU NEED IT

As a global player in industrial vibration technology, with three manufacturing sites and eighteen trading subsidiaries, it is OLI's goal to provide excellent value to our customers.

OLI has been committed to delivering high-quality market-orientated products since being founded in 1961, but is aware that excellent customer service is of pivotal importance. The OLI product is distributed in Southern Africa by its subsidiary in Gauteng, South Africa.

The OLI product meets the high demands of the South African climate. Its high-quality products and equipment that can withstand our harsh operating environment. As a strong believer in innovation, OLI is constantly striving to be ahead of the curve.

It is this drive for innovation that allows us to now offer stainless steel motors to industry for clean and efficient plant operation.

We also offer a range of flanged mounted electric vibrators, specifically designed to be retro-fitted to existing equipment in a number of industries and sectors.

Our other offerings - pneumatic hammers and linear pneumatic vibrators - reduces numerous material flow headaches in plants. Identifying the customers'

needs is a priority; achieving a partnership built on trust is the reward. By supplying competitive, high-quality products for wide-ranging applications, OLI combines performance and reliability by adapting to the ever-changing market.

The key centrepiece of OLI's business strategy is rapid stock delivery, any time, any place in the world. With its skilled competence and valuable knowledge of the industry, OLI is a credible expert when it comes to assistance in finding the most suitable solution to each individual customer's request.

As all OLI's products are market-orientated, this affords the company knowledge of numerous applications and industries.



WHEN YOU NEED IT, WHERE YOU NEED IT!  
THE MISSION STATEMENT THAT GIVES OLI THE EDGE OVER ITS COMPETITORS





# From farm to fork.

Southern Africa's Leader  
in Food Safety



## Testing

We provide a broad range of Chemistry, Microbiological, Diagnostic and Molecular Testing in our custom-built, state of the art laboratories country wide.

Professional Lab Testing Services

[www.assurecloud.co.za](http://www.assurecloud.co.za)

**Assurecloud**

## FOOD SAFETY: DIAGNOSTIC TESTING

Did you know that food safety testing also involves helping sick animals? It may sound surprising but the field is a lot broader than most people think.

The sphere of food safety that deals with animal health is called diagnostic and veterinary testing. It's a lot newer than microbiology or chemistry testing. However, it is equally relevant and just as important.

If you work with livestock of any kind, this is important for you to note. In fact, it is even important for those who use animal produce straight from farms. Read on to find out more.

### What is diagnostic testing?

In the most basic definition, diagnostics is the process of identifying illness. However, food diagnostics can be done throughout the entire spectrum of the food chain. In other words, it can be done from farmed produce and raw materials to end products. We, however, focus on the early stages of the food chain.

### How is this related to food safety?

Diagnostic testing allows you to identify present bacteria and viruses in sick animals. From there it helps veterinarians to diagnose and treat these sick animals. Next, a bacteriology lab - which is related to diagnostic testing - can carry out tests, like the Minimum Inhibitory Concentration antimicrobial test. This allows veterinarians to figure out what dose of an antibiotic is needed to treat the animal.

As you can imagine, sick animals do not make for safe food. If the meat you eat is infected with a disease, it could make you extremely sick. Food poisoning is a major risk here, but there are other risks too. For example, in April and May 2021, South Africa experienced outbreaks of avian influenza (H5N1) in various poultry farms. As a result, import bans and culls in the sector were implemented. Diagnostic testing can help prevent the spread of such illness.

In addition, if there are consistent outbreaks of illness on farms or in any groups of livestock then food security in the country will decrease.

### Which diagnostic and veterinary tests should you consider?

There are a variety of tests that can be done in this sector of food safety. Below we will provide a short description of the main types of tests. This should help you to determine which tests are necessary for you.

- **Enzyme Linked Immunosorbent Assay (ELISA)**

This test is likely one of the most commonly used testing methods in the diagnostic industry. The test allows you to find hidden allergenic proteins in food. In addition, the test can be used to detect antibodies or antigens for certain diseases and viruses.

- **Haemagglutination Inhibition (HI)**

The HI test is used for the diagnoses of viruses such as influenza.



Veterinary diagnostic testing

Assurecloud

The method depends on the characteristic of viruses that allows it to absorb red blood cells. While the test can be done on humans, it is commonly carried out in the diagnostic industry on chickens and turkeys. It is a relatively inexpensive test, and can give you results quickly.

- **Rapid Plate Aggulation (RPA)**

This test allows you to detect the presence of salmonella antigens in poultry.

- **Salmonella testing and Serotyping**

In connection to the above point, testing for Salmonella in animals and animal feed is very important. If you're in the business of livestock, it will affect when you can slaughter.

- **Richinella testing**

Trichinellosis can affect both humans and animals. It is a public health risk if not detected.

- **Hygiene swabs of the environment**

Effective hygiene control is necessary to prevent the spread of foodborne illnesses. By doing swabs on the environments in which foodstuffs are handled, you can prevent contamination.

- **Molecular testing**

PCR analysis to confirm the presence of viral infections that cause disease in humans and animals eg. COVID analysis on human and surface swabs.

### Concluding thoughts

To ensure that animals are healthy means ensuring that people are healthy as a result. As a provider of poultry or any other livestock, it is necessary that you do diagnostic and veterinary testing. It is critical to food safety.

Contact Assurecloud to find out more.  
[www.assurecloud.co.za](http://www.assurecloud.co.za)





**P&R Pumps CC**  
Est. 1990

## We Specialise In



**Borehole Cleaning  
& Rehabilitation**



**Borehole Drilling**



**Borehole Pump  
Testing & Sales**

### CONTACT US

OFFICE: 051-447 2937

PAUL: 082 777 2937

WESLEY: 082 462 2445

40 LOMBARD STREET, BLOEMFONTEIN

prpumps@mweb.co.za

<https://prpumps.wixsite.com/prpumps>

**EFFECTIVE  
SECURITY SOLUTIONS**

**DRAKENSBURG  
Gate & Fence**

serving your fencing needs best  
www.drakensberggatefence.co.za



Farm Security Fencing | Bio Security Fencing | Orchard Fencing | Game Fencing | Gates



☎ 036 488 1793 📞 063 294 6898 ✉ info@drakensberggatefence.co.za

# Op en Top Canopies

Gehalte is my uitgangspunt, kwaliteit my trots



South African  
NATIONAL PARKS  
Honorary Rangers™

'n Persentasie van  
opbrengs word  
geskenk om  
renoster stropery  
te bekamp

Vasberade,  
Doelgerig,  
Lojaal



BESKIKBAAR VIR ALLE  
MODELLE TREKKERS



Presisie Pas  
Verlengstukke



**Koning van Dakkies**

NAVRAE BY U NAASTE AFGRI, GWK, NTK, NWK, NORTHMEC, MASCOR, SENWES, TWK EN VKB TAKKE  
e-pos : jpdupre@lantic.net





**We ALSO Manufacture & Supply:**

- Pre packed Garden Hose Fittings
- SABS Mining Hose - and more.

**Visit our website for further details!**

**Reinforced Hosing (Pty) Ltd**

Tel: 011 769 2600

[www.watex.co.za](http://www.watex.co.za)



## CROP SPRAY HOSE

**Liner Material:** PVC NITRILE  
**Cover Material:** PVC BLUE  
**Liner:** White, Nitrile resistant to pesticides, fertilizer, Pesticide orchard spraying, compressed air lines, pneumatic tools, etc. to 4000 Kpa

**Application:**



## DRAGLINE HOSE

| WATEX DRAGLINE HOSE | 5 YEAR WARRANTY |         |
|---------------------|-----------------|---------|
| PRODUCT CODE:       | DL12030         | DL20030 |
| Nominal ID (mm)     | 12              | 20      |
| Burst Pressure Kpa  | 4000            | 3500    |

| WATEX QUALITY DRAGLINE HOSE 10 YEAR WARRANTY | PLUS SABS APPROVED |          |          |
|--|--------------------|----------|----------|
| PRODUCT CODE:                                | DL101230           | DL102030 | DL102530 |
| Nominal ID (mm)                              | 12                 | 20       | 25       |
| Burst Pressure Kpa                           | 5000               | 4500     | 4000     |

- 10 Year Lifetime, OR
- 5 Year Lifetime Quality



## Rain Trap

Accurate readings.



Move to any spot in the garden simply by replacing the mount bracket with a stick or rod. UV Resistant makes it strong and a good buy!

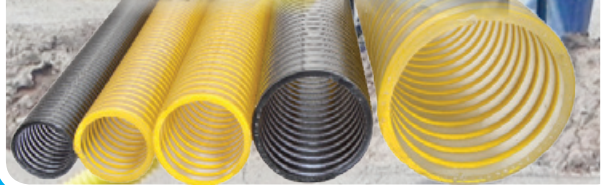
## MULTI-PURPOSE HOSE

High pressure Nitrile hose for petrol, diesel, oil, chemicals and general high pressure use to 2000 Kpa. 5 - 25mm Diameter.



## SUCTION HOSE

Manufactured from virgin raw materials. Transparent for better visibility & more flexible! 25 - 150 mm diameter x 30m lengths. Available in black or yellow.



**CONTACT US FOR TECHNICAL DETAILS OR VISIT OUR WEBSITE**

# Spectroscopic Solutions for the **Milk & Dairy** Industry



## **MIRA – IR Milk Analyzer**

Pre-calibrated IR analyzer for raw milk, standardized milk, cream and whey.



## **MPA II – One for all**

Single instrument solution for all dairy applications of liquid, semi-solid and solid products.



## **TANGO – Analysis to go**

FT-NIR spectrometer with touch screen operation and easy user interface.

### **Contact us:**

**Web:** [www.bruker.com/dairy](http://www.bruker.com/dairy)

**Phone:** +27 11 463-6040

**Email:** [info.za@bruker.com](mailto:info.za@bruker.com)







## CHICKEN

### MAXIMISER

Starter • Grower  
Finisher • Post Finisher

### BROILERMAX

Starter • Grower  
Finisher • Post Finisher

### BROILER HIGH YIELD

Pre Starter • Starter  
Grower • Finisher  
Post Finisher

### LAYMAX

Laymax I • II • III

### OVITEC

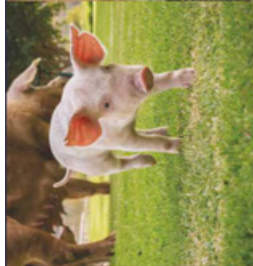
Prime • Peak • Perform  
Persist • Support • Mega

### REARMAX

Starter • Grower  
Developer

### PULLITEC

Reception • Pre-Lay  
Grower Concentrate



## PIG

### PIGMAX

Starter • Grower  
Finisher • Sow

### PORCILAC

Summer  
Winter  
Cooler

### PORCISOW

Summer  
Winter  
Concentrate

### Porci Gilt

Cooler  
Porci Flush

### PORCITEC

1/2  
12/30  
30/50  
50/70  
70/90  
Porci Lean  
Grower Concentrate



## DAIRY

### ALFAMAX

30  
J25

### FIBERMAX

25 • 35 • 40  
Fresh Cow

### GRAINMAX

Dry  
MS  
OS

### PREMAX

MS  
OS

### RYEMAX

30

### DAIRY PASTURE

100 • 102 • 104  
120 • 122 • 124  
150 • 152 • 154

### FIBERMAX

Dry  
Prepartum  
Fresh Cow  
Mineral Pellet

### NUTRISPEC

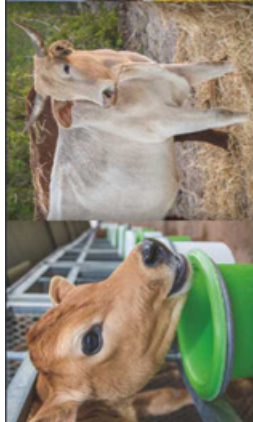
150 • 154 • 170  
174 • 190 • 194  
210 • 214

### HPC

50  
Daily  
Dry

### LICKS

Rye/Grass  
Kikuyu



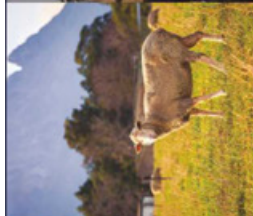
## CALF

### MAXICALF

16 • 18 • 21  
Complete

### FIBERMAX

Calf



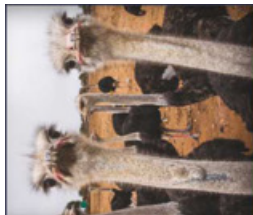
## SHEEP

### SEMI-COMplete

Lamb Creep  
Lamb Finisher  
Maxi Lamb  
Ewe and Lamb  
Stud Ram  
Maintenance Pellets  
Drought Pellets

### LICKS

Ewe and Lamb



## OSTRICH

### NOVA RANGE

Pre-Starter  
Starter  
Grower  
Finisher  
Maintenance

### KLEIN KAROO RANGE

Grower  
Finisher  
Maintenance

### BREEDER RANGE

Breeder  
Breeder Concentrate

We offer over 100 Premium Formulated Products



Contact us and our dedicated Technical Advisors for a customised feed solution that will suit your specific needs.



| Location   | Contact Information   |
|------------|---|
| George     | Tel: +27 (0) 44 871 2000<br>Fax: +27 (0) 86 427 6081  |
| Malmesbury | Tel: +27 (0) 22 487 9100<br>Fax: +27 (0) 86 427 6093  |
| Paterson   | Tel: +27 (0) 42 235 1702<br>Fax: +27 (0) 86 427 6096  |
| Pretoria   | Tel: +27 (0) 12 562 0531<br>Fax: +27 (0) 86 427 6089  |
| George     | Saagmeul Street<br>PO Box 1351<br>George<br>6530<br>GPS: S. 33° 58' 03.01" E. 22° 28' 16.0"                           |
| Malmesbury | Corner of Bokomo Road<br>and Railway Street<br>PO Box 700<br>Malmesbury, 7269<br>GPS: S. 33° 27' 982" E. 19° 43' 284" |
| Paterson   | 1 Balne Street, Paterson<br>PO Box 51<br>Paterson<br>6130<br>GPS: S. 33° 25' 59.8" E. 25° 57' 367"                    |
| Pretoria   | Stand 22, Lavender Road<br>PO Box 5<br>Bon Accord<br>Pretoria, 0009<br>GPS: S. 28° 38.0711" E. 28° 11.982"            |



The Council regulates the occupations of fresh produce, export and livestock agents and maintain and enhance the status and dignity of those occupations and the integrity of persons practicing those occupations, according to Section 9, Agricultural Produce Agents Act, 12 of 1992.

## WHAT WE DO?

### Fresh Produce Agents

Who acts on behalf of a principal, by selling the principal's produce to buyers such as hawkers, wholesalers and retailers. Most agents operate on fresh produce markets. Prices of fresh produce is not predetermined but discovered in terms of the supply and demand principle.



### Livestock Agents

Livestock agents act on behalf of a principal and their income is based on commission or a fee, paid by the producer for services rendered. Section 16 (1)(b) of the APA Act indicates that no person shall perform any act as a livestock agent unless he or she is registered with APAC.



### Export Agents

Export agents act on behalf of producers and their income is based on commission or a fee, paid by the producer for services rendered. Section 16 (1)(a) of the APA Act indicates that no person shall perform any act as an export agent unless he or she is registered with APAC. Export agents can voluntarily register with the Fresh Produce Exporters Forum (FPFF).



Tel: (011) 894 3680, 087 095 1335



www.apacweb.org.za



# Winter Hael

Is jou winter grane verseker?

Niemand kan die toekoms voorspel nie, maar ons kan dit vir jou beskerm.

Winter gewasse:  
Koring, Gars en Hawer.

Versekerde gevare sluit in:  
Hael, Brand en Transito.  
Ryp (nietes beskikbaar, teen 'n addisionele premie – Hawer uitgesluit).

Proteïenryk  
**Bryte**  
in Purley Malloosy

Vir meer insigting kontak u agent of IMPAC CropSure  
Tel: 012 012 0687 Epos: info@impaccropsure.co.za

## INKOMSTE WAARBORG

Niemand kan die toekoms voorspel nie, maar ons kan dit vir jou beskerm.

Hierdie versuikeringstelsel is gebaseer op 'n gewasverzekering wat verseker die produsent teen oorsake per hektaar. Tans verander-likes word dit tydens elke in versuiking getoets teen SAFED (S) en Opbreng (T). Dekking is vir Maïe, Sonneblom en Sojabone.

**Watter soort skade word gedek?**  
Droogte, Brand, Hael, Transito, Ryp, Oornat Rots, Virus, Oubekwame plantkiesse en -insekte, Oornatige hittegolwe.

**Waar word die versekerde inkomste waarde bereken?**  
LOO v SAFEX-ryk v Hektare v Waarsborgingskoers.  
• LOO word gereduseer deur IMPAC CropSure.  
• SAFEX-ryk, gemiddeld van die laaste 20 verhandelingsjare vir elke Julie volgende jaar (Maïe) of einde Mei volgende jaar (Sojabone en Sonneblome).  
• Hektare volgens oorsake.  
• Maksimum waarsborgingskoers word deur IMPAC CropSure gereduseer (dit kan dit verlaag).

**Woe word die berekening van skade gedoen?**  
Die kassier moet IMPAC CropSure 2 weke voor die stroopproses begin, in karote stiel, Bare, sal gestroop word op alle lande om opbreng te bepaal. Die inkomste van die kassier word gebruik om te bepaal of beskerm word volgens die opbreng. Dit moet van die gestroopde bene in die SAFEX-ryk (loos op laaste dag van stroopingsmaand, gemiddeld van 20 verhandelingsjare terug) EIS - indien die inkomste waarde minder is as die waarsborgingswaarde.  
EEN EIS - indien die inkomste waarde meer is as die waarsborgingswaarde.

**Woe word die berekening van skade gedoen?**  
• Heeltemal in ingesluit tot die waarsborgingsmaand.  
• Taksing word anders indien beskade groenplante word, geen oorsake van die skade word, geen oorsake van die skade word.  
• Skadevergoeding word gedien deur 'n stroopingsmaand tydens stroopryk.  
• Indien die gewasverzekering skade is tydens oorsake, sal 'n eis op hant die reëlhouer nie.

**Is alle inkomste hekkings ing beskikbaar?**  
Ja, IMPAC CropSure bied ook alle inkomste hekkings.

**Wanneer is premie betaalbaar?**  
• Maïe en Sonneblome voor of op 30 Julie  
• Sojabone voor of op 31 Mei laaste premie voor 28 Februarie betaal word, sal 'n korting van toelating wees.

Winter gewasse: Koring, Gars en Hawer. Versekerde gevare sluit in Hael, Brand en Transito.  
Ryp (nietes beskikbaar, teen 'n addisionele premie – Hawer uitgesluit).

www.cpsseedlings.co.za

The leading supplier of vegetable and forestry seedlings, growing medium, vermiculite and nitrosol fertilizers.

The dedicated, experienced and hands-on management team at CPS Seedlings takes care in every stage from seed to delivering transplant-ready seedlings to ensure the customer receives top quality timber and vegetable seedlings. The team is readily available to offer technical advice and a back-up service for the farmer. We use a secure information system to ensure customer information confidentiality.



We conform to the SGASA Certification Standards. This is a South African Industry Certification which is still amongst the best in the world.

We deliver all our products and services in the Free State, Kwa-Zulu Natal and Mpumalanga.

CPS Greytown: +27 (0) 33 417 1009  
CPS Pongola: +27 (0) 73 988 8483

Sales: Hannes +27 (0) 76 790 8500







simon@advancedgrp.co.za  
morris@advancedhcs.africa  
+27 (0) 11 590 3237



ADVANCED **VITA HOCL** IS THE ONLY SANITISING/DECONTAMINATING PRODUCT THAT ANY FARMER WILL EVER NEED!

IT IS A 100% NATURAL AND SAFE, COST EFFECTIVE SANITISER WITH MULTIPLE APPLICATIONS IN THE FARMING, ABATTOIR AND MEAT/POULTRY PROCESSING MARKETS.

**NAMPO  
SALE!**

100 liters of  
VITA HOCL

**ONLY R 199.00**

**SPECIAL ONLY AVAILABLE AT NAMPO**

© MES CON SA

#### PIG FARMING

In Pig farming, ADVANCED VITA HOCL is safe on animals and effective at reducing colony counts of micro organisms when swine are kept in close quarters, controlling E. coli, Salmonella and Listeria contamination.

#### CHICKEN FARMING

Effective decontamination of the hatchery or brooder in order to prevent the spread of Avian disease, and the removal of pathogenic organisms from poultry products.

#### ABATTOIRS

Effective decontamination and sanitation of meat products is critical to maximising product quality and maximising the shelf life of all meat products and to minimise product rejection and customer complaints.





Agripieces SA (PTY) LTD  
"Agricultural Equipment and Parts"



3 IN 1 BEWERKING !!!



f Agripieces SA

GRIZZLY 3 in 1

**AGRO<sup>®</sup>  
MASZ**  
*Modern Farming*

- Primêre bewerking (stoppelbewerking)
- Sekondêre Bewerking (beitel 350mm werksdiepte)
- Tersiere Bewerking (saadbed voorbereiding)
- Besikbaar in 4m (220-280kw) & 5m (280-340kw)



Epos: [info@agripieces.co.za](mailto:info@agripieces.co.za)



Agripieces SA (PTY) LTD  
"Agricultural Equipment and Parts"



NW / VRYSTAAT / NK / OK  
WIMPIE DU PREEZ  
0731022287  
[wimpie@agripieces.co.za](mailto:wimpie@agripieces.co.za)

LIMPOPO / MPUMALANGA / KZN  
JACO STRYDOM  
0836336968  
[jaco@agripieces.co.za](mailto:jaco@agripieces.co.za)

GAUTENG - HOOFKANTOOR  
011 397 1383  
0861 638368  
[info@agripieces.co.za](mailto:info@agripieces.co.za)

[www.agripieces.co.za](http://www.agripieces.co.za)



# DAS

Drakensberg Agricultural Services

**Honey Bee**  
**AirFLEX**  
236

WEBB'S  
WILSON WOODVILLE LONDON

Come visit us at  
Nampo 2022!  
Stand C20b

## EXTENSIVELY EQUIPPED, HI-SPECS WORKSHOP AND SPARES



Drakensberg Agricultural Services is a family-owned dealership and workshop for FENDT and Massey Ferguson products as well as importers for HoneyBee Headers, Fliegl Trailers and Flexxifinger. We also sell and service a variety of local and international implement manufacturers such as Equalizer, Rovic, Camso, Lemken, Hardi and Sulky.



We have been going since 2008 and growing every year to ensure that we provide the best solutions and service for our customer. We always try to sell a solution instead of just a product.



Sales and Service of FENDT and Massey Ferguson products, Equalizer planters, Rovic Leers, CAMSO track systems, LEMKEN, Hardi and Sulky. Importing and distribution Of Honeybee Draper Headers, FLIEGL Trailers and Flexxifinger crop lifters.





Kantoor : +27 (0) 58 303 8894  
 Adf : +27 (0) 82 824 6438  
 Das : +27 (0) 82 785 0005  
 www.agrifoodsa.info/directory/agri-com-group

**ONS DIENS AAN DIE BOER**  
 EENSTOP-VERSKAFER VIR JOU BOERDERY EN BESIGHEID!

**FUCHS OLIE:** VIR "DUIITSE BETROUWBAARHEID"  
 Enjinolie | Rattkasolie | Transmissie-olie | Hidroliese-olie | Smeermiddels  
 Remvloeistof | Anti-Freeze | Handreiner

**GRONDSLYTONDERDELE:**  
 "Offset" | Disskottels | Beitel- en "ripper" -skare | Ploegskare | Vlerkskare

**AANDRYWING:**  
 Katrolle | Tandwiele | V-Bande | Kettings | "PTO's" | Jukke | Buise |  
 Elektriese Motors (ISEW & Bonfiglioli) | Ratkaste | Laers | Seëls | Gordel  
 PVC | Rubber

**BALDWIN FILTERS:**  
 Lugfilters | Oliefilters | Hidroliesefilters | Transmissiefilters | Brandstoffilters |  
 Verkoelingsfilters

**ALGEMEEN:**  
 Dixon Batterye | Soygro Produkte | Mielie-meel | Boute & Moere

ONS MAAK DIT ONS BESIGHEID OM JOU BESIGHEID TE VERSTAAN!



ONS REPUTASIE BERUS  
 OP DIE SPOEDIGE  
 EN SUKSESVOLLE  
 AFHANDELING VAN JOU EIS.

**'N GOEDGEKEURDE FINANSIËLE DIENSVERSKAFER**

Met jare se ondervinding en ervaring in die  
 versekeringsbedryf, spesialiseer ons in die volgende:

Oesversekering | Motor- en Huisinhoud | Geboue | Boere-  
 en Besigheidsversekering | Trokke & Transito | Skole &  
 Gastehuse/B&B.

Advies waarop jy kan vertrou!

Kobie: +27 (0) 83 628 5093  
 Lanie: +27 (0) 79 401 1592

Ons het uitstekende markte vir die verkoop van droëbone!

- Graanskoonmaakdienste
- Versakking en verpakking van graan



Louis van Niekerk  
 +27 (0) 51 448 4842  
 +27 (0) 51 448 8747  
 +27 (0) 82 940 5325  
 louis@triomf.co.za

**STRONG** **RELIABLE** **TESTED**

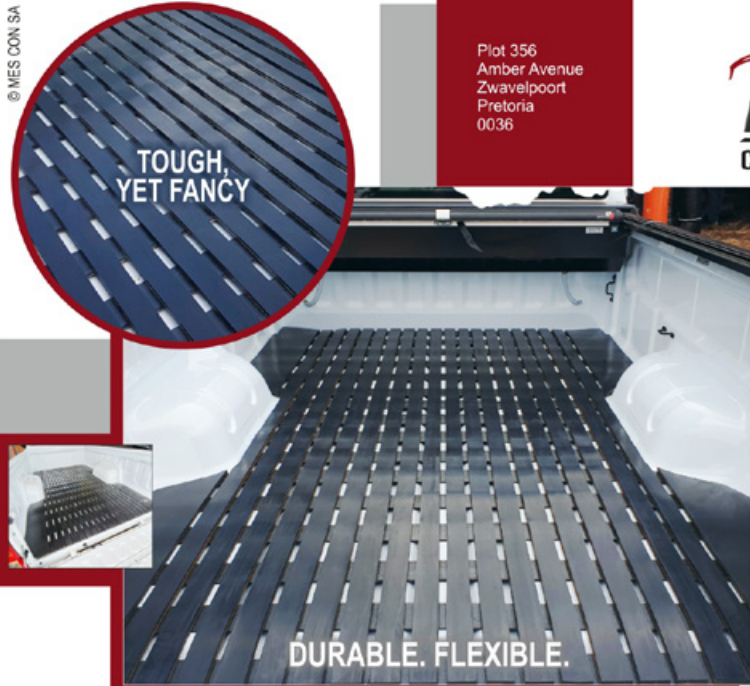


Steel Rails:

- Rails for Hunting
- Rails for Loading
- Rails for Bakkies
- Rails for Light Transport Vehicles

[www.rhinotrailies.co.za](http://www.rhinotrailies.co.za)

© MES CON SA



Plot 356  
 Amber Avenue  
 Zwavelpoort  
 Pretoria  
 0036



**CUSTOM-DESIGNED RUBBER  
 BIN MATS FOR YOUR BAKKIE!**

Our mats are durable and slide resistant. They're flexible and double up as sand tracks under your wheels when you get stuck. They protect your bakkie against scratches and dents. Their aerated designs prevent water build-up, so no rust. They absorb any heavy load and spread the weight evenly. And they stay put when you unload.

**MADE TO OUTLAST ANYTHING**

- Strongest and most versatile rubber bin mat on the market.
- Non-slip surface to keep your cargo from sliding around while driving.
- Elevated design to keep moisture away from your load.
- Elevated design to absorb sudden impacts.

[info@bakconmat.co.za](mailto:info@bakconmat.co.za)  
[www.bakconmat.co.za](http://www.bakconmat.co.za)



+27 (0) 12 817 2130  
 +27 (0) 83 603 6314



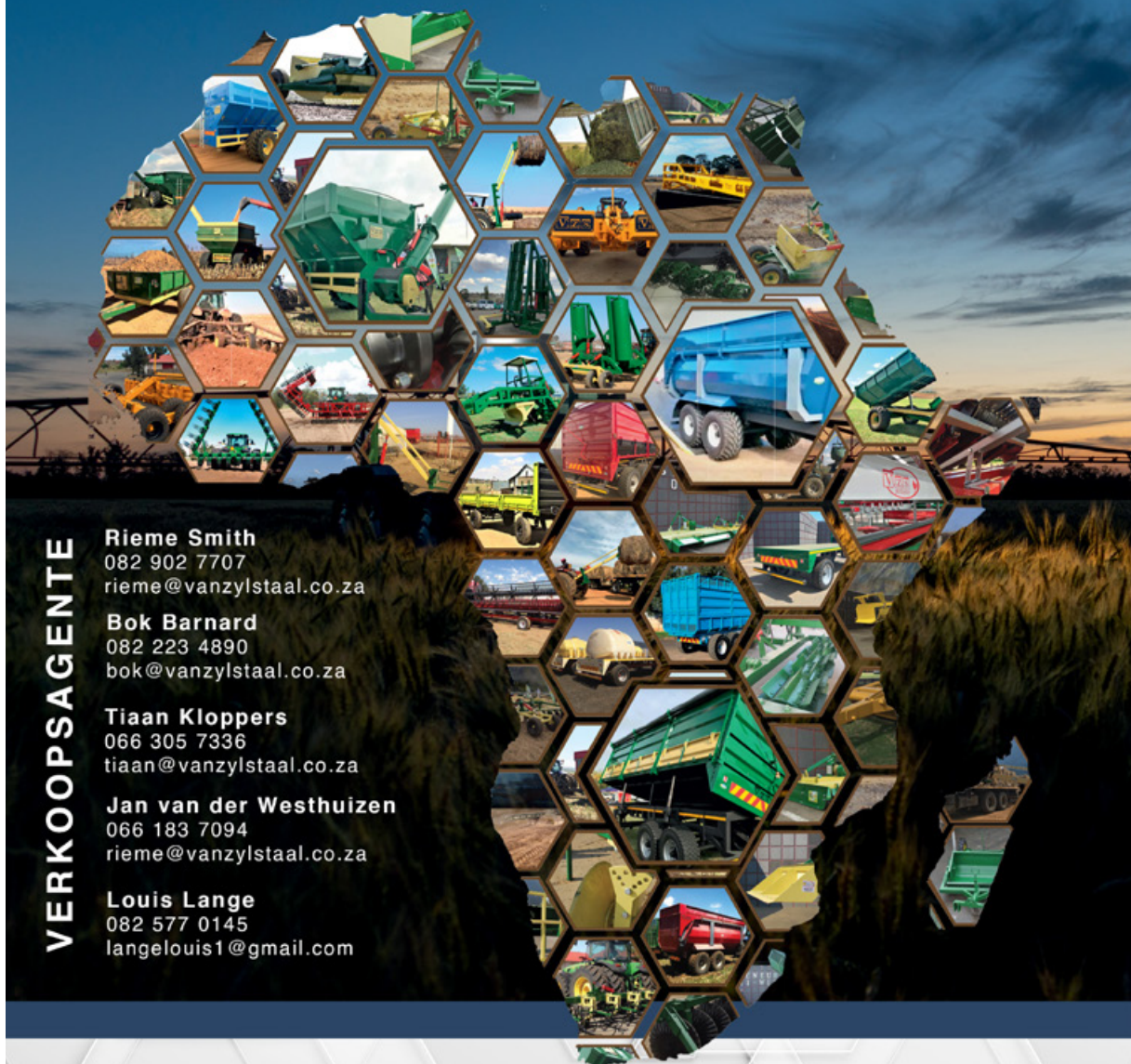
# MINI BUT MIGHTY

## THE ENGINE DRIVEN MINI PIVOT

Patrick Ellis | +27 (0)31 350 4525 | [patrickellis@reinke.com](mailto:patrickellis@reinke.com)



# VIR DIE BOER



## VERKOOPSAGENTE

**Rieme Smith**  
082 902 7707  
rieme@vanzylstaal.co.za

**Bok Barnard**  
082 223 4890  
bok@vanzylstaal.co.za

**Tiaan Kloppers**  
066 305 7336  
tiaan@vanzylstaal.co.za

**Jan van der Westhuizen**  
066 183 7094  
rieme@vanzylstaal.co.za

**Louis Lange**  
082 577 0145  
langelouis1@gmail.com

058 863 2452  
sales@vanzylstaal.co.za  
www.vanzylstaal.co.za





# Your Partner For Optimal Water Supplies



## Specialised Products & Featured Product Categories

Irrigation



Rainwater  
Harvesting



Water  
Pumps



Water  
Tanks



All Water  
Component  
& Fittings



Filtration



**Keep In Touch**

[info@waterspot.co.za](mailto:info@waterspot.co.za)  
[www.waterspot.co.za](http://www.waterspot.co.za)

**Centurion Branch**

[centurion@waterspot.co.za](mailto:centurion@waterspot.co.za)  
+27 12 653 1289

**Pretoria East Branch**

[ptaeast@waterspot.co.za](mailto:ptaeast@waterspot.co.za)  
+27 12 035 1174

OFFICE : +27 (0) 18 000 5162  
RULIE : +27 (0) 84 690 5525  
CINDY : +27 (0) 72 227 5522  
rulie@alphadamme.co.za  
alphadamme@gmail.com



## KWALITEIT STAALWERK

'n "Verskuifbare Lam Afrondings Kraal" is n 6m x 4.5m x 1.5m hoë struktuur met 300mm x 100mm wiele. Dit is verskuifbaar grootliks vir higiëniese doeleindes, maar ook sodat indien dit op weiding geplaas word, dit oorbeweiding voorkom.

Daar kan tot 40 lammers op 'n slag in die kraal wees. Addisionele water- en voerbakke kan aan die kant van die kamp geheg word sodat geen persone die kraal hoef binne te gaan nie.



### ONS MAAK:

- Motorafdakke
- Hekkies
- Balustrades
- Staal meubels
- Omheinings
- Tenkstaanders
- Staal strukture
- Toerusting vir plaashantering

VRA GERUS 'N  
KWOTASIE AAN



SCAN ME





# AGRIDRAINAGE

YOUR NO.1 IN YIELD GAIN!



## SOIL AND WATER SPECIALISTS

- 1 Surveying – Topo, Soil Classification & Chemical
- 2 Design – Full Spectrum Water Management Planning
- 3 Drainage – Surface and Sub-Surface
- 4 Agronomy – Crop Risk Management



**AGRI**  
TRACK  
FOR



JOHN DEERE

**CASE III**  
AGRICULTURE

*Challenger*

**AGRI-iO**

Smart Automation



FOR

Cellular Signal & Wi-Fi Less

- Irrigation
- Pump Control
- Pivot
- Tank Control

CONTACT US

[www.agridrainage.co.za](http://www.agridrainage.co.za)

T: +27 79 503 0436

[info@agridrainage.co.za](mailto:info@agridrainage.co.za)





Feeding



Drinking



Climate



Housing

### SUPPLY AND SERVICING OF FEEDING, DRINKING AND CLIMATE CONTROL EQUIPMENT FOR ALL POULTRY PRODUCTION OPERATIONS

- Automatic Feeders
- Nipple and Bell Drinkers
- Layer Cages
- Egg Grading & Packaging Machines
- Breeder Nests
- Market Leading Ventilation Systems & Spares
- Wetwalls & Cooling
- Bulk Feed Silos & Cross Auger Systems
- Heating Systems & Ventilation Fans



Tel: +27 11 708 3094 | email: sales@plasson.co.za

The S-Range hammer mills are used to mill grain, sugar, tobacco, salt, spices and various other products that needs size reduction for human consumption. It is also used in the medical and herbal industries.

Machines are available in mild steel and food-grade stainless steel. These hammer mills are powered by three phase electronic motors or diesel/petrol engines.

### Whole grain hammer mills S Range Hammer mills

| MODELS          | S1        | S4        | S6         | S8         |
|-----------------|-----------|-----------|------------|------------|
| Rotor speed     | 4400 rpm  | 4400 rpm  | 3500 rpm   | 3500 rpm   |
| Motor speed     | 2900 rpm  | 2900 rpm  | 2900 rpm   | 2900 rpm   |
| KW Required     | 2.2KW/4KW | 7.5KW     | 11KW       | 11KW/15KW  |
| FLC             | 5.3 A     | 17.5A     | 23 A       | 31 A       |
| HP Required     | 5HP/9 HP  | 12HP/15HP | 19 HP      | 24 HP      |
| <b>Maize</b>    |           |           |            |            |
| 0.8mm           | 100 kg/hr | 200 kg/hr | 400 kg/hr  | 500 kg/hr  |
| 4mm             | 400 kg/hr | 800 kg/hr | 1400 kg/hr | 1500 kg/hr |
| <b>Grain</b>    |           |           |            |            |
| 2mm             | 200 kg/hr | 300 kg/hr | 530 kg/hr  | 560 kg/hr  |
| <b>Casava</b>   |           |           |            |            |
| 0.6mm           | 150 kg/hr | 270 kg/hr | 550 kg/hr  | 600 kg/hr  |
| <b>Paprika</b>  |           |           |            |            |
| 1mm             | 50 kg/hr  | 70 kg/hr  | 110 kg/hr  | 130 kg/hr  |
| <b>Chillies</b> |           |           |            |            |
| 1.6mm           | 80 kg/hr  | 100 kg/hr | 150 kg/hr  | 170 kg/hr  |
| 3mm             | 100 kg/hr | 130 kg/hr | 180 kg/hr  | 200 kg/hr  |



+27 (0) 11 864 1601 | [WWW.DROTSKY.CO.ZA](http://WWW.DROTSKY.CO.ZA)

TRADING HOURS  
MONDAY - FRIDAY  
08:00 - 13:00  
14:00 - 17:00

Sales: (27) 0-11 659 8041/2 (27) 0-82 936 5843  
Email: robert@pleysier.co.za

WE SELL FERTILE BROILER EGGS - 360 EGGS PER BOX  
Visit our website for more information  
[www.pleysier.co.za](http://www.pleysier.co.za)





Logistics Transport Globally

SAFE, SMOOTH AND RELIABLE  
FREIGHT MANAGEMENT SOLUTIONS



SCAN ME



info@ltgfreight.co.za  
www.ltgfreight.co.za

**WE DELIVER A SUPERIOR AND PERSONALISED  
FREIGHT AND LOGISTICS SERVICE**

# TRUST IN OUR EXPORT CAPABILITIES

LTG Logistics Transport Globally (PTY) Ltd is a South African freight forwarding & clearing company based in Gauteng with its headquarters in Rosslyn. They are part of a highly competitive logistical industry in which many multi-nationals / global forwarders participate.



However, LTG has become a unique player in this environment as a reliable exporter. They will firstly ensure they understand the client's expectation and secondly will deliver to these requirements.

With extensive experience in the automotive, agricultural and mining environment, LTG has built up a legacy of being a dynamic forwarder that will have all types of cargo delivered to any destination worldwide.

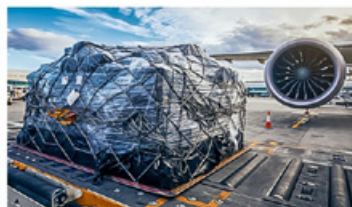
The close relationships with airlines and shipping lines, which have been fostered for many years, means that LTG has the best connections to book the required space with the airlines or different container types with the major shipping lines that uses our shores.

Apart from covering all export destinations, LTG also covers various cross-country routes and can assist with shipments where the origin and final destinations are in foreign countries and thus bypasses South Africa completely.



At LTG client service is the key factor to retain its client base. Each client is treated as if it's the only one LTG has, ensuring that a strong relationship is built by attending to the client's

unique situation and requirements.



LTG makes a point of visiting clients regularly and developing personal business relationships. Communication is key, whether it being a compliment or complaint, the reaction will be in a professional manner to resolve any issues without delay.

All visits are recorded on the company's CRM system and follow ups are done on a regular basis. This allows LTG to continuously improve processes and service to deliver better results.

Give LTG the opportunity to manage your next export consignment and see for yourself!



**TO LTG YOU ARE NOT JUST A NUMBER,  
YOU ARE A VALUED BUSINESS PARTNER!**





**COMPONENTS 2005**

(PTY) LTD

t/a ENGINE & HEAVY DUTY COMPONENTS



**Distributors of Diesel Engines, Generator, Construction Equipment & Heavy Duty Diesel Engine Replacement parts Suitable For:**

ADE  
BELL  
Case  
Caterpillar  
Cummins  
DAF  
Dong Feng  
FAW  
GM Detroit  
Fiat  
Ford

Gardner  
Hatz  
Hino (Toyota)  
International  
Isuzu  
Iveco  
John Deere  
Komatsu  
Kubota  
Leyland  
Lister

Mahindra  
MAN  
Massey Ferguson  
Mercedes  
Mitsubishi  
MWM  
Neuss  
Nissan  
Perkins  
Petter  
Renault

RVI (Berliet)  
Ricardo  
Scania  
SDEC  
TATA  
Vickers  
Weichai-Steyr  
Volvo  
VW Trucks  
Yanmar  
Yangdong

**Johannesburg Head office**

Tel: 011 870 5000  
ehd@ehd.co.za

**Durban**

Tel: 031 700 1160  
ehddurban@ehd.co.za

**Bloemfontein**

Tel: 051 430 5404  
ehdbloem@ehd.co.za

**Cape Town**

Tel: 021 510 0567  
ehdcapetown@ehd.co.za

Manufacturer's names, numbers, symbols, photos and descriptions are used for reference purposes only and it is not implied that the parts referred to are the products of those manufacturers. Warranty conditions are available on our website [www.ehd.co.za](http://www.ehd.co.za)

### POTABLE WATER TANKS

Supplied with a certificate

4 x 2.3 m Zinc Tank (29 kl) - R 30 300

6 x 2.3 m Zinc Tank (65 kl) - R 50 300

8 x 2.3 m Zinc Tank (116 kl) - R 73 600

**PRICES INCLUDE:**

- Roof
- Zinc
- 50 mm Outlet
- Food grade dam liner
- 50 mm Overflow
- Installation and VAT

DELIVERY NOT INCLUDED

### ZINC RESERVOIRS

4 x 2.3 m Zinc dam (29 kl) - R 23 200

6 x 1.55 m Zinc dam (44 kl) - R 26 600

6 x 2.3 m Zinc dam (65 kl) - R 35 400

8 x 2.3 m Zinc dam (116 kl) - R 48 100

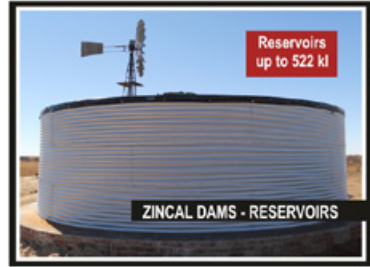
12 x 2.3 m Zinc dam (261 kl) - R 98 200

14 x 2.3 m Zinc dam (354 kl) - R124 000

**PRICES INCLUDE:**

- Zinc
- Dam liner
- 50 mm Outlet
- 50 mm Overflow
- Installation and VAT

DELIVERY NOT INCLUDED



Reservoirs  
up to 522 kl

ZINCAL DAMS - RESERVOIRS



HDPE liners  
available

EARTH DAMS

### DIY DAMS ALSO AVAILABLE | 10 YEAR WARRANTY

### WE WILL BEAT ANY WRITTEN QUOTATION!

Any size ZincAl dam, grain dam, ZincAl tank or lining can be manufactured on request. 0.8mm to 1.2 mm ZincAl sheets with a life expectancy of 2 - 4 times longer than that of traditional sheets are used. 850 GSM PVC linings are manufactured with the aid of a high-frequency welding process. Linings are UV resistant. Material of the same thickness is used for the walls and the floor. Should the thickness differ, you get your lining free.

Jannie: +27 (0) 72 600 0179 | Boet: +27 (0) 82 496 1934 | Office: +27 (0) 76 307 7573  
Email: sales@nwdamme.co.za | Website: www.nwdamme.co.za



TAFE



058 1100 100

Naas 083 500 7628

Braam 084 440 5854

Jacques 072 357 5787

Henrico 084 392 0418

### Vervangende onderdeel vir / Replacement parts for:

\* Werkwinkel / Workshop

\*\* Ingenieurswerke / Engineering

\*\*\* TAFE Agents / Agente



6 Thomson Street, Bethlehem FS



sales@naspaq.co.za





**SAKPRO BAGS OFFER YOU  
A SAFE AND RELIABLE  
PACKAGING SOLUTION FOR  
YOUR FRESH PRODUCE!**

DELIVERING ON PROMISES  
*Since 1964*

**The quality of our product is as important to us  
as the quality of your fresh produce is to you.**

**We manufacture and markets a comprehensive  
range of strong, colourful knitted synthetic bags  
ideally suited for the packaging of various fruits  
and vegetables**



 **MADE IN SA**

**CONTACT US: 013 751 2376 | [sales@sakpro.co.za](mailto:sales@sakpro.co.za) | [www.sakpro.co.za](http://www.sakpro.co.za)   **



## WHO ARE WE?

SAKPRO IS SOUTHERN AFRICA'S LEADING MANUFACTURER AND SUPPLIER OF SYNTHETIC KNITTED HDPE BAGS WITH A WIDE RANGE OF USES IN THE AGRICULTURAL AND CIVIL ENGINEERING INDUSTRIES.

These premium bags have been manufactured by Sakpro and used in the South African domestic market since 1964. The quality of all the bags produced by Sakpro is of the highest standard worldwide, and the bags are designed to meet customer demands and satisfaction.

At Sakpro we strive to give our customers a variety of choice when it comes to the colour and size of bags available to the fresh produce industry.

Our manufacturing structure allows clients to add their own personalised branding to the bags. Sizes and colours can also be customised according to client specifications.

We are constantly driven to deliver high quality products and finding new ways to serve you better as a trusted brand name in the packaging industry.

It is with our clients and the consumers in mind that we aspire to be the best, reaching new heights so that we can serve you better!

### RECYCLING TIPS FROM OUR TEAM.

What can you do with your used Sakpro bags?

- Wrap them up in a ball, secure with an elastic, and use them

as scrubbies to clean nonstick pans and other dishes.

- Carry sand toys to the beach inside of them.
- Put leftover mushrooms in them and hang in a warm place to dry. Dried mushrooms are very useful.
- Make them into bath loofahs.
- Run them through your embossing machine to add texture to your cards.
- You can crochet with them! Make crochet table settings and doilies from the mesh.
- Hang a bar of soap in one near the outdoor faucet to wash away garden and lawn dirt. You won't have to take it out of the bag to use, just scrub with the bag and all.

At Sakpro we are dedicated to ensure food safety along the entire food chain from production to consumption.

Delivering on promises since 1964.

[www.sakpro.co.za](http://www.sakpro.co.za)

To find out more about our product range contact:  
sales@sakpro.co.za  
+27 (0)13 751 2376







# ROTRIXAFRICA

industries cc

## MECHANISED IRRIGATION SYSTEMS BUILT TO IRRIGATE AFRICA



[WWW.ROTRIXAFRICA.CO.ZA](http://WWW.ROTRIXAFRICA.CO.ZA)

**ANDRIES BOTHMA**

+27 (0) 79 959 3356 | [sales@rotrixafrika.co.za](mailto:sales@rotrixafrika.co.za)

© MES CON SA





SOIL PROBE



# JOHNSON

SOIL AUGERS

## DESIGNED & MANUFACTURED FOR TOUGH AFRICAN SOIL CONDITIONS

Tough and efficient tools for soil sampling.  
Highly attractive international pricing up to 50% below other suppliers.

- SOIL CLASSIFICATION.
- SOIL PROFILE INSPECTION.
- POST HOLE DIGGING.
- FERTILITY SAMPLING MADE QUICK & EASY WITH OUR BEATER RAPID SAMPLER.
- NO HASSLE TOPSOIL INSPECTION IN IRRIGATED SOILS WITH OUR SPECIALLY DESIGNED SOIL PROBE.

DETAILS & ORDERS ON OUR WEBSITE  
[WWW.JOHNSONSOILAUGER.CO.ZA](http://WWW.JOHNSONSOILAUGER.CO.ZA)

We ship to all foreign destinations



RAPID SAMPLER PROBE



RAPID SAMPLER



BUCKET AUGER



DUTCH AUGER



DUTCH AUGER WITH SOIL

© MES CON SA



# SWARTLAND SPRAY PUMPS PTY (Ltd)

rasc@adept.co.za | [www.swartlandsuijpompe.co.za](http://www.swartlandsuijpompe.co.za)



**Teyme**  
 2 000, 3 000 en 4 000 liter modelle  
 200 lt / min Comet Pomp  
 1 050 mm Waaier  
 Toediening van bome tot 21 m hoog  
 Baie goeie bedekking op boomoppervlakte  
 Beweeglik met kort draaisisteem



**Teyme GTX 9 Toring Suijpomp**  
 1 500, 2 000 en 3 000 liter modelle  
 200 lt / min Comet Pomp  
 915 mm Waaier  
 Ontwerp vir Hoëspoed toedienings  
 Toring is ontwerp om Chemie 200% beter te plaas op plantmateriaal met minimum "Spray Drift"

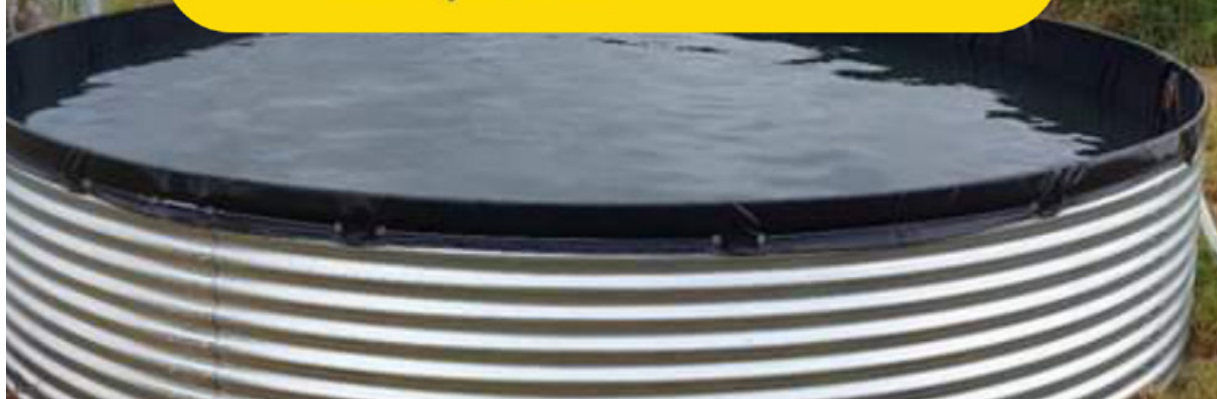


Tel: 021 876-3510 / 021-300-0223 Sarel Swart: 082-554-2121  
Andre Lambrechts: 073-303-4270





# Alpha Damme



## COST EFFECTIVE QUALITY STEEL STRUCTURES

WE STRIVE TO GIVE OUR CLIENTS A ONE-STOP WATER STORAGE AND IRRIGATION SOLUTION!

**AT ALPHA DAMME, WE MANUFACTURE TOP QUALITY PRODUCTS.  
RELIABLE SERVICE AND MARKET RELATED COMPETITIVE PRICING IS OUR GOAL.**

### OUR SPECIALITIES

- Potable water tanks
- Zinc dams
- Linings for concrete zinc dams
- Firefighting water storage
- Agricultural tanks
- Pivot irrigation
- Earth dam liners

Superior quality and flexible linings for all types of dams

Prevention of algae growth

Construction of corrugated and mesh wire dams

# ZINC DAMS WATER TANKS PLACE ORDERS TODAY!

We manufacture any size of zinc dams or linings on request.

Our liners are suitable for potable water tanks, a wide range of chemicals and liquid fertilisers.

We deliver nationwide, as well as to neighbouring countries.

Alpha Damme provides a 10 year warranty against faulty material and/or workmanship on all products.



OFFICE: +27 (0) 18 000 5162 | RULIE: +27 (0) 84 690 5525 | CINDY: +27 (0) 72 227 5522  
rulie@alphadamme.co.za | alphadamme@gmail.com



WWW.AQUACHECK.CO.ZA

# AquaCheck

SOIL MOISTURE MANAGEMENT



## RELIABLE, HIGH QUALITY SOIL MOISTURE MONITORING EQUIPMENT AND IRRIGATION MANAGEMENT SOFTWARE

With global weather patterns constantly changing, water is becoming a scarce commodity worldwide. As a result, top farmers are adapting their production methods to accommodate a changing world and simply don't have time for inferior quality products. Increase yield, improve crop quality and save water by using our product range.



## LET EVERY DROP COUNT

SOIL MOISTURE PROBES | 5 YEAR WARRANTY | IRRIGATION SCHEDULING | AGRONOMY SERVICES | IRRIGATION MANAGEMENT

Leonard Hein

+27 (0) 82 314 7042 | +27 (0) 21 970 5140 | [leonard@aquacheck.co.za](mailto:leonard@aquacheck.co.za)



# BISA

BIO-INSECTARIES  
SOUTH AFRICA

FOR ECO-FRIENDLY PEST CONTROL



## GET RID OF FLIES INTELLIGENTLY

Unrivalled Quality and Professional Service

Bisa breeds and distributes parasitic wasps to control flies in the pupae and therefore offers you fly control the natural way. Long-term economic benefits. Less chemical pollution. A marketing advantage by producing environmentally-friendly products.

Contact us:

Arno Moore (Ph.D) - Managing Director  
Cell: 083-270-4866 / Email: [arno@bioinsectsa.com](mailto:arno@bioinsectsa.com)







**Experience,  
efficiency and  
quality in irrigation**

**Cherry Irrigation delivers agricultural irrigation solutions and services of high quality with unparalleled efficiency.** Whether you need a complete solution – from consultation through to design, implementation and aftersales support – or want to pick and choose from our service offerings, we are here to help.

## SERVICES RELATING TO

### SOLUTIONS

Design • Supply • Install • Maintain • Automate



Irrigation systems



Automation systems



Fertigation systems



Water management

### PRODUCTS

Install • Maintain • Service • Repair



Irrigation equipment



Pumps



Monitoring equipment



Electrical equipment



# African Poultry Solutions

© MES CON SA

## From the Farmer, To the Farmer



### Agricultural poultry solutions for a productive, sustainable future

#### What's in the name?

##### Africa

The African continent will be our focus point for marketing and distribution. The head office would be situated in South Africa.

##### Poultry

Although poultry would be our main priority we are also dedicated to any other agricultural project.

##### Solutions

To supply products is easy, but to find a solution to a specific need can be tricky. Our expertise in this area is unmatched!

+27 (0) 84 548 8004  
kobus@africanps.co.za

[www.africanps.co.za](http://www.africanps.co.za)



Nero Manufacturing are expert manufacturers of modern and robust Insulated panels. Our Panels are made of the highest quality grade materials giving the consumer the surety of a world class end product. Our factory is situated in Queensburgh, kwaZulu-Natal but distribution is done throughout Southern Africa.

### We Manufacture:

- Insulated Panels
- Cold Rooms
- Mobile Cold Rooms
- Food Trailers
- Modular Buildings
- Mobile Classrooms
- Mobile Clinics
- Clean Rooms
- Vegetable Plants
- Park Homes
- Security Guard Huts
- Mobile Offices
- Mining Camps

📞 Brenden - 074 672 0024 ✉ [brenden@neromanufacturing.co.za](mailto:brenden@neromanufacturing.co.za)  
066 328 5887 🌐 [www.neromanufacturing.co.za](http://www.neromanufacturing.co.za)

## DROPPER FOR LIFE

Dit sal jou 'n LEEFTYD hou!

© MES CON SA



### DROPPER FOR LIFE VIR ALLE Tipes DRAADOMHEINING

UNIEKE GEPATENTEERDE ONTWERP

Oorweeg ons vir die volgende redes:

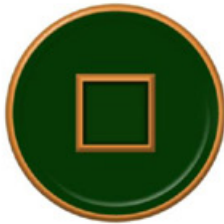
- Geen binddraad word benodig
- Tussen 80 en 90% besparing op arbeid
- Ontwerp maak dit onmoontlik vir die draad om op en af te beweeg
- Meer sigbaar, roes -en vuur bestand
- Besigheidsnaam kan op dropper aangebring word
- Diefstalle verminder aansienlik

Besiek ons webblad vir 'n pryslys en verdere besonderhede.



[WWW.DROPPERFORLIFE.CO.ZA](http://WWW.DROPPERFORLIFE.CO.ZA)





**HARVEST GROUP™**  
*When only the best will do*

© MES CON SA

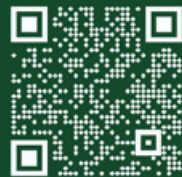
# IDEAL PACKAGING IDEAS



## WE DO:

- Knitted Bags
- Pallet Net
- Mono Bags
- Pallet Wrap
- Loom Bags
- BOPP Bags
- Polypropylene Rolls
- Shopping Bags
- Bird Net
- Stretch Net
- Automatic Packaging
- Sock Nets

[www.harvestbags.co.za](http://www.harvestbags.co.za)



Tel: +27 (0) 12 546 6499 | Email: [info@harvestbags.co.za](mailto:info@harvestbags.co.za)

The RIGHT tank for YOUR need



MORE THAN  
**TWENTY**  
YEARS  
EXPERIENCE

IN SUPERIOR &  
EFFECTIVE MOULDING

AVAILABLE AT  
SELECTED CO-OP'S



download our catalogue  
[www.krmplastics.co.za](http://www.krmplastics.co.za)

## NEW GENERATION HIGH PERFORMANCE CLEAR LIQUID FERTILISER



**Thio-Sul<sup>®</sup>**  
12% N 26% S  
High concentration clear liquid



**KTS<sup>®</sup>**  
21% K 17% S  
Highly available K and S nutrients



**CaTs<sup>®</sup>**  
6% Ca 10% S  
100 % readily available Ca and S

Unlock the soil's full potential with  
**thiosulfate based fertilisers:**

A complete range of high concentration clear liquid  
N, K, Ca and S fertilisers that add unique benefits  
to your existing crop nutrition program



For trade, technical and retail enquiries  
contact Renier Boshoff  
[renier.boshoff@tessenderlo.com](mailto:renier.boshoff@tessenderlo.com)  
Cell: +27 79 043 0597  
[www.tessenderlokerley.com](http://www.tessenderlokerley.com)





# FERTASA

Fertilizer Association of Southern Africa

Reg. Nr. 1971/000012/08 | VAT Reg. Nr. 4830104164



FERTASA,  
CERTIFIED  
CREDIBILITY.

FERTASA  
Fertilizer Association of Southern Africa  
Tel: +27 (0) 12 349 1450  
Email: [general@fertasa.co.za](mailto:general@fertasa.co.za)



# WE STAND FOR THE PROTECTION OF THE SUSTAINABLE USE OF FERTILIZER.

Fertasa strives to provide information on fertilizer and crop related topics. Apart from assistance with fertilizer applications, queries relating to fertilizer usage, plant nutrition and soil fertility usage, plant nutrition and soil fertility are referred to our Technical Advisers or Subject Matter Specialists for their expert opinions and advice.

Member companies and others are encouraged to share their experiences in proven techniques and novel approaches in ensuring social, environmental and economic sustainability for all.

## Structure of Fertasa

Fertasa is managed and directed by a Board of Directors who are elected by and representative of the ordinary members. The Board of Directors report to the Members which comprise representatives from all ordinary and affiliate members. The Members appoint operational committees to attend to various aspects of the business of Fertasa.

## Purpose

Fertasa is a recognised and preferred body aimed at promoting the image of the fertilizer industry through:

- Promoting the integrity of each Member and building preferential trust for their products and services.
- Enhancing and protecting the interest of its members through effective engagement with government and organised agriculture.

## Board of Directors

The Board of directors manages and directs the business and affairs of Fertasa. The Board comprises six (6) directors, and one (1) executive director (the Chief Executive Officer of Fertasa).

The directors are elected by the ordinary members with equal representation from both smaller and larger member companies.

## Core Functions

- Actively promote the agro-economic and environmentally accountable fertilizer, bio-fertilizer and aglime practices;
- Develop a positive public awareness and acceptance of the need for fertilizer, bio-fertilizer and aglime use in food production;
- Improve the operating environment within which its constituent industries operate in a spirit of free enterprise and fair trade;
- Assimilate, adds value to and disseminates fertilizer, bio-fertilizer and aglime related information;
- Provide a discussion forum for its members and other parties on all aspects relating to fertilizer, bio-fertilizer and aglime distribution, agronomic advice and product quality.

## Who are we?

- A code of conduct.
- A set of standards audited by an independent compliance management body.
- Quality products.
- Relevant scientifically-based recommendations.
- Continual learning and improvement.
- Complying with all legal requirements.

[www.fertasa.co.za](http://www.fertasa.co.za)



Fertasa and its members are committed to the promotion of sustainable soil fertility and enhanced plant nutrition.





THE LANDSCAPE IS ALWAYS CHANGING,  
ENTRUST IT TO THE PROFESSIONALS..



**BEEKMAN**



**EXPERIENCE** LIFE WITH STYLE.

**THE ORIGINAL**  
**ASK FOR IT BY NAME**



SCAN ME



[www.beekman.co.za](http://www.beekman.co.za)