

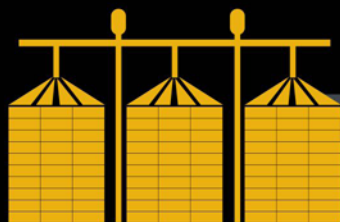
# AGRI FOODSA MAG

FREE SUPPLIERS GUIDE

APR - MAY 2020  
Vol 4 • No 6



**AGT**  
FOODS AFRICA  
From Producer to the World



[www.gsiafrica.co.za](http://www.gsiafrica.co.za)

STORAGE | CONDITIONING  
MATERIAL HANDLING | STRUCTURES



**ROSTSELMASH**  
Professional Agrotechnics  
**COMBINE HARVESTERS**



"Country Wide Dealer Network"



**TORUM 780** CLASS 8



ENGINE TYPE  
**Mercedes Benz**

POWER  
**372 kW**

TYPE  
**ROTARY**

TOTAL CONCAVE AREA  
**5.40 sq. m**

DRUM DIAMETER  
**762 mm**



**RSM 2375**

**ROSTSELMASH**  
Professional Agrotechnics

- 375 h.p / 280kW
- 11 L Cummins turbocharged engine
- 12 x 4 Manual transmission
- 35 kmph Maximum speed
- 170L/min Hydraulics performance
- 927 L Fuel tank
- CAT IV rear 3-point hitch
- Twin tyres

\* Limited stock available



**ACROS 595** CLASS 5



ENGINE TYPE  
**Cummins QSL9**

POWER  
**248 kW**

TYPE  
**STRAW WALKER**

TOTAL CONCAVE AREA  
**1.38 sq. m**

DRUM DIAMETER  
**800 mm**



**NOVA** CLASS 4



ENGINE TYPE  
**Cummins QSB 4.5**

POWER  
**129 kW**

TYPE  
**STRAW WALKER**

TOTAL CONCAVE AREA  
**0.93 sq. m**

DRUM DIAMETER  
**600 mm**



38 Rokewood Street, Pomona, Kempton Park, 1619



[www.feelerafrica.co.za](http://www.feelerafrica.co.za)

BD Tereblanche  
082 550 7813

[bd@feelerafrica.co.za](mailto:bd@feelerafrica.co.za)

Steve du Plooy  
076 541 8576

[steve@feelerafrica.co.za](mailto:steve@feelerafrica.co.za)

Sales/Service/Parts: 011 979 0131 / [info@feelerafrica.co.za](mailto:info@feelerafrica.co.za)

SCAN ME



# EDITOR'S LETTER



Dear Respected Advertiser and User. We have asked our CEO, Mabel, to communicate with you.

The lockdown regulations announced by Pres. Ramaphosa are seriously affecting each and every entity in our country – and the world.

Our businesses and clients (end users), now more than ever before, need all the exposure and support to maintain production and simultaneously improve on existing production methods in a sustainable manner. Your trusted medium Agrifoodsa continue to communicate indispensable relevant information to the farming sector. This past week has seen record setting traffic to our Facebook, Instagram and AGRIFOODSA.INFO website surpassing our highest weekly hits (page views) and sessions (visits to the site) to date.

**EXCITING NEW VALUE-ADDED OFFERS, IN THIS AND THE NEXT EDITION** - free to new and existing advertisers are being introduced to support our advertisers and entice our readers and users. To take advantage of these incredible value-added offerings our dedicated AGRIFOODSA Sales Executives are getting in touch with our valued advertisers. Our positivity will not be locked down, and we are tackling this challenge with determination and enthusiasm.

Your grit, services and service rendering and determination by EVERYBODY in the AGRI sector will be an important factor in beating the trying times we are living in. Continue tackling this challenge with determination and enthusiasm.

Our prayers are with each one of you and your loved ones  
The AGRIFOODSA Team

## EDITORIAL COMMITTEE

Editor in chief : Chantell de Bruin  
Managing director : Mabel Schmahl  
HR manager : Leon Schmahl  
Production manager : Ronel Schmahl  
Content manager : Aby Maclellan

## ACCOUNTS

Ida van Zweel : +27 (0) 12 997 3407  
accounts@agrifoodsa.info

## ADVERTISING & RATES

Louis de Bruin : Advertising manager  
+27 (0) 82 060 2398  
louis@agrifoodsa.info

Mabel Schmahl : +27 (0) 82 563 4427  
mabel@agrifoodsa.info

Nicole Muller : +27 (0) 84 735 6573  
sales@agrifoodsa.info

## COVER PHOTO

AGT FOODS AFRICA : See Pg 28-29 & 50-51 for more



## LAYOUT, PUBLISHING & DISTRIBUTION

MES Consultants South Africa

Format	: B5, full-colour, glossy magazine
Frequency	: Bi-monthly
Language	: Bilingual
LSM	: 6-10
Print run	: 7 500 minimum
Digital run	: 12 000
Readership	: 70 000
Distribution	: Nationally available at agricultural outlets (please visit our website for a detailed list)
Read online	: www.agrifoodsa.info/magazine



© 2020 AGRIFOODSA Magazine. All rights reserved.

**Planter Monitor**

- Seed per 100m per row, seed population
- Hectares worked and much more
- Easy to install and maintain
- Fertiliser and turning of axles
- Can be applied to most planters
- Real tough, rust and water resistant

**ELECTROLEE**

**Cut losses with PRECISION Plant with VISION**

**Process Monitor for Air Seeders**

- Area
- Speed
- Tacho up to 4 axles
- Alarm on each function
- Easy to install
- Bin / Tank full
- Bin / Tank empty

**3 YEAR GUARANTEE**

**Tel: 012 345 3193**  
Fax: 012 345 6763  
Web: www.electrolee.co.za  
Email: info@electrolee.co.za  
Sales: sales@electrolee.co.za

SCAN ME

# CONTENTS

## FEATURES | HOOFTREKKE

AGRIFOODSA.INFO Distribution List Pages 112-113

## 4X4 ACCESSORIES | 4X4 TOEBEHORE

Opposite Lock Pages 86-87

Opposite Lock Pages 110-111

## ACCESSORIES | BYBEHORE

Atlasware Pages 52-53

Atlasware Pages 22 & 97

## ADJUVANTS | BYMIDDELS

Nulandis Pages 66-67

Rolfes Agri Pages 16-17

## ANIMAL FEED | VEEVOERE

Yara Animal Nutrition Page 43

## ANTI-DIESEL THEFT | DIESELDIEFSTAL

Diesel Guard Page 27

## BOREHOLES | BOORGATE

Torque Africa Explorations Pages 58-59

## COMMUNICATION | KOMMUNIKASIE

Maxwell Technology Page 98

## CROP PROTECTION | GEWASBESKERMING

Nulandis Pages 66-67

Syngenta SA Pages 08 & 31

Syngenta SA Page 48

Syngenta SA Page 103

## DEALERSHIPS | HANDELAARS

BB Menlyn Ford Page 64

N1 4X4 Pages 23 & 74

Pat Hinde Toyota Springs Page 65

## DIESEL ENGINES | DIESELENJINS

Kirloskar Engines SA Pages 12-13

## DRILLING | BOORWERKE

Torque Africa Explorations Pages 58-59

## ENGINES | ENJINS

Magnum Power Page 90

## EXPORTS | UITVOERE

LTG Freight Pages 24-25

LTG Freight Pages 62-63

LTG Freight Page 93

## FARMING EQUIPMENT | BOERDERY-TOERUSTING

GEA Africa Page 109

## FEED ADDITIVES | VOERAANVULLINGS

Yara Animal Nutrition Page 43

## FEEDERS & SYSTEMS | VOERDER & SISTEME

Pro Plastic Page 83

## FENCING | OMHEININGS

Lichtenburg Omheinings Materiaal Page 49

## FERTILIZER | KUNSMIS

Nulandis Pages 66-67

## FERTILIZER (SPECIALITY) | KUNSMIS (SPESIALITEIT)

Rolfes Agri Pages 16-17

## FERTILIZER ASSOCIATION | MISSTOFVERENIGING

F.E.R.T.A.S.A. Pages 34-35

## FLEET MANAGEMENT | VLOOTBESTUUR

Ctrack Fleet Management Pages 14-15

Ctrack Fleet Management Page 42

## FUEL | BRANDSTOF

Auto Commodities Page 82

## GENERATORS | KRAGOPWEKKER

Kirloskar Engines SA Pages 12-13

Mipower Pages 38

Sub Sahara Power Distributors Pages 106-107

## GENETICS | GENETIKA

CRV Xseed Pages 49

## GRAIN STORAGE | GRAANBERGING

GSI Africa Cover Strip

GSI Africa Pages 36-37

GSI Africa Pages 72-73

Noordwes Damme Page 91

<b>GREENHOUSE TUNNELS   KWEEKHUIS TONNELS</b>		<b>LOGISTICS   LOGISTIEKE</b>	
Bell & Paton	Page 43	LTG Freight	Pages 24-25
		LTG Freight	Pages 62-63
		LTG Freight	Page 93
<b>HORSE SADDLES   PERDESALE</b>		<b>LUBRICANTS   SMEERMIDDELS</b>	
Franco-C Saddlery	Page 77	Auto Commodities	Page 82
<b>IMPLEMENTS   IMPLIMENTE</b>		<b>MANUFACTURING EQUIPMENT   VERVAARDIGINGS-TOERUSTING</b>	
Rebello Agricultural Group	Page 55	Agricon	Page 19
<b>IMPORTS   INVOERE</b>		<b>MATERIAL FLOW   MATERIAALVLOEI</b>	
LTG Freight	Pages 24-25	Oli SA	Page 78
LTG Freight	Pages 62-63		
LTG Freight	Page 93		
<b>INSPECTIONS   INSPEKSIES</b>		<b>MECHANISATION   MEGANISASIE</b>	
PPECB	Pages 40-41	Agricon	Page 19
		Agri Frequencies	Pages 46-47
<b>INTERNET   INTERNET</b>		BB Menlyn Ford	Page 64
Maxwell Technology	Page 98	EHD Component	Page 54
		Electrolee	Pages 03 & 92
<b>INVASIVE TREE REMOVAL   INDRINGERPLANTEVERWYDERING</b>		Feeler Africa	Page 02
Tree Popper	Page 43	GEA Africa	Page 109
		Goldpack	Pages 68-69
<b>INSOLATION   INSOLASIE</b>		JBH Wheels	Page 108
Technopol SA	Pages 60-61	Magnum Power	Page 90
		N1 4X4	Pages 23 & 74
<b>IRRIGATION   BESPROEÏING</b>		Oli SA	Page 78
KSB Pumps and Valves	Page 102	Pat Hinde Toyota Springs	Page 65
Senter360 Technologies	Pages 94-95	Piket Implements	Pages 30 & 81
		Piket Implements	Page 96
<b>PIVOTS   SPILPUNTE</b>		Piket Implements	Back Cover
Senter360 Technologies	Pages 94-95	Pro Plastic	Page 83
		Rebello Agricultural Group	Page 55
<b>LABORATORIES   LABORATORIUMS</b>		Reliance Poultry Equipment	Pages 09
Nvirotek Labs	Pages 39 & 56	Saxeni Agric	Pages 11 & 57
Nvirotek Labs	Page 104	Saxeni Agric	Page 75
		Senter360 Technologies	Pages 94-95
<b>LINERS &amp; TARPS   VOERINGS &amp; SEILE</b>		Till Master	Page 83
Tata Ma Tarps	Page 79	Tree Popper	Page 43
		<b>MILKING SYSTEMS   MELKSTELSELS</b>	
<b>LIVESTOCK EQUIPMENT   LEWENDE HAWE TOERUSTING</b>		GEA Africa	Page 109
Plasson SA	Pages 32-33		
Plasson SA	Page 77	<b>NATIONAL PRODUCE REGULATOR   NASIONALE PRODUKTE REGULEERDER</b>	
		Agricultural Produce Agents Council	Page 09
<b>LIVESTOCK HOUSING   LEWENDE HAWE BLYPLEK</b>			
Technopol SA	Pages 60-61		

# CONTENTS

## PACKAGING | VERPAKKING

Goldpack Pages 68-69

## PACKAGING EQUIPMENT | VERPAKKINGSMATERIAAL

Rebello Agricultural Group Page 55

## PARTS | PARTE

EHD Component Page 54

## PASTURE | WEIDING

Brasuda Pages 20-21

Brasuda Pages 44-45

## PICKING BAGS | PLUKSAKKE

Tata Ma Tarps Page 79

## PIVOTS | SPILPUNTE

Senter360 Technologies Pages 94-95

## POULTRY | PLUIMVEE

Cobb South Africa Pages 26 & 80

Cobb South Africa Page 105

Reliance Poultry Equipment Pages 09

## POULTRY EQUIPMENT | PLUIMVEETOERUSTING

Reliance Poultry Equipment Pages 09

## POWER EQUIPMENT | KRAGTOERUSTING

Makita Pages 70-71

## PRECISION FARMING | PRESISIE BOERDERY

Agri Frequencies Pages 46-47

DFM Technologies Page 10

Electrolee Pages 03 & 92

Farmtrack Page 99

## PROCESS AUTOMATION | PROSES OUTOMATISERING

Goldpack Pages 68-69

## PUMPS | POMPE

Magnum Power Page 90

## RESERVOIRS | OPGAARDAMME

Noordwes Damme Page 91

## SEED | SAAD

AGT Foods Africa Cover

AGT Foods Africa Pages 28-29

AGT Foods Africa Pages 50-51

## SECURITY | SEKURITEIT

Diesel Guard Page 27

Pathfinder ZA Page 18

## SHADE NETTING | SKADUNETTE

Plusnet | Geotex Pages 88-89

## SOLAR | SOLAR

Mipower Pages 38

## SUGAR & MILLING | SUIKER & MEULE

RCL Foods Sugar & Milling Page 76

## TRANSPORT | VERVOER

Crack Fleet Management Pages 14-15

Crack Fleet Management Page 42

LTG Freight Pages 24-25

LTG Freight Pages 62-63

LTG Freight Page 93

## TYRES | BANDE

JBH Wheels Page 108

## VEHICLES | VOERTUIG

BB Menlyn Ford Page 64

N1 4X4 Pages 23 & 74

Pat Hinde Toyota Springs Page 65

## WATER PUMPS | WATERPOMPE

Prima Engineering Services Page 99

## WATER STORAGE | WATERBERGING

Noordwes Damme Page 91

Staalboer Pages 84-85

## WATER TANKS | WATERTENKS

Noordwes Damme Page 91

## WEIGHING INDUSTRY | WEEGINDUSTRIE

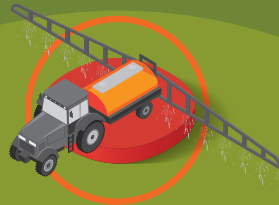
Loadtech Load Cells Pages 100-101

## WHEEL RIMS | WIELDOPPE

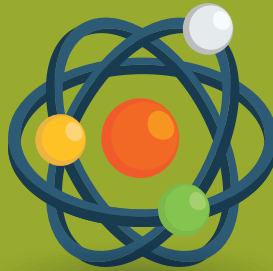
JBH Wheels Page 108

AGRI FREQUENCIES	PAGES 46-47	MAGNUM POWER	PAGE 90
AGRICON	PAGE 19	MAKITA	PAGES 70-71
APAC	PAGE 09	MAXWELL TECHNOLOGY	PAGE 98
AGT FOODS AFRICA	COVER	MIPOWER	PAGES 38
AGT FOODS AFRICA	PAGES 28-29	N1 4X4	PAGES 23 & 74
AGT FOODS AFRICA	PAGES 50-51	N1 4X4	PAGES 114-115
ATLASWARE	PAGES 52-53	NOORDWES DAMME	PAGE 91
ATLASWARE	PAGES 22 & 97	NULANDIS	PAGES 66-67
AUTO COMMODITIES	PAGE 82	NVIROTEK LABS	PAGES 39 & 56
		NVIROTEK LABS	PAGE 104
BB MENLYN FORD	PAGE 64	OLI SA	PAGE 78
BELL & PATON	PAGE 43	OPPOSITE LOCK	PAGES 86-87
BRASUDA	PAGES 20-21	OPPOSITE LOCK	PAGES 110-111
BRASUDA	PAGES 44-45		
		PAT HINDE TOYOTA SPRINGS	PAGE 65
COBB SOUTH AFRICA	PAGES 26 & 80	PATHFINDER ZA	PAGE 18
COBB SOUTH AFRICA	PAGE 105	PIKET IMPLEMENTS	PAGES 30 & 81
CRV XSEED	PAGES 49	PIKET IMPLEMENTS	PAGE 96
CTRACK FLEET MANAGEMENT	PAGES 14-15	PIKET IMPLEMENTS	BACK COVER
CTRACK FLEET MANAGEMENT	PAGE 42	PLASSON SA	PAGES 32-33
		PLASSON SA	PAGES 77
DFM TECHNOLOGIES	PAGE 10	PLUSNET   GEOTEX	PAGES 88-89
DIESEL GUARD	PAGE 27	PPECB	PAGES 40-41
		PRIMA ENGINEERING SERVICES	PAGE 99
EHD COMPONENT	PAGE 54	PRO PLASTIC	PAGE 83
ELECTROLEE	PAGES 03 & 92		
		RCL FOODS SUGAR & MILLING	PAGE 76
FARMTRACK	PAGE 99	REBELO AGRICULTURAL GROUP	PAGE 55
FEELER AFRICA	PAGE 02	RELIANCE POULTRY EQUIPMENT	PAGES 09
FERTASA	PAGES 34-35	ROLFES AGRIC	PAGES 16-17
FRANCO-C SADDLERY	PAGE 77		
		SAXENI AGRIC	PAGES 11 & 57
GEA AFRICA	PAGE 109	SAXENI AGRIC	PAGE 75
GOLDPACK	PAGES 68-69	SENER360 TECHNOLOGIES	PAGES 94-95
GSI AFRICA	COVER STRIP	STAALBOER	PAGES 84-85
GSI AFRICA	PAGES 36-37	SUB SAHARA POWER DISTR	PAGES 106-107
GSI AFRICA	PAGES 72-73	SYNGENTA SA	PAGES 08 & 31
		SYNGENTA SA	PAGES 48 & 103
JBH WHEELS	PAGE 108		
		TATA MA TARPS	PAGE 79
KIRLOSKAR ENGINES SA	PAGES 12-13	TECHNOPOL SA	PAGES 60-61
KSB PUMPS AND VALVES	PAGE 102	TILL MASTER	PAGE 83
		TORQUE AFRICA EXPLORATIONS	PAGES 58-59
LICHTENBURG OMHEININGS	PAGE 49	TREE POPPER	PAGE 43
LOADTECH LOAD CELLS	PAGES 100-101		
LTG FREIGHT	PAGES 24-25	YARA ANIMAL NUTRITION	PAGE 43
LTG FREIGHT	PAGES 62-63		
LTG FREIGHT	PAGE 93		

Lepidoptera...  
halt, stuit! 1, 2...



Stabiliseer die produk  
in die spuittenk



Met gepatenteerde ZEON tegnologie is  
AMPLIGO geformuleer as unieke en  
uniforme mikro-kapsules.



Verseker beter  
bedekking



Beskerm die produk  
teen afbraak deur sonlig



 **SmartFarm**  
Inspired



syngenta.co.za

 **Ampligo**<sup>®</sup>

**syngenta.**

LEES DIE ETIKET VAN ELKE PRODUK VIR VOLLEDIGE BESONDERHEDE.  
AMPLIGO<sup>®</sup> bevat chloorantraniliprool en lambda-sihalotrien (Reg. Nr. L8685, Wet Nr 36 1947) SKADELIK.  
Syngenta Suid Afrika, Privaatsak X60, Halfway House, 1685. Tel: 011 541 4000. [www.syngenta.co.za](http://www.syngenta.co.za)  
Alle gelyste produkte is geregistreerde handelsmerke van 'n Syngenta Groepmaatskappy.

   @SyngentaSA





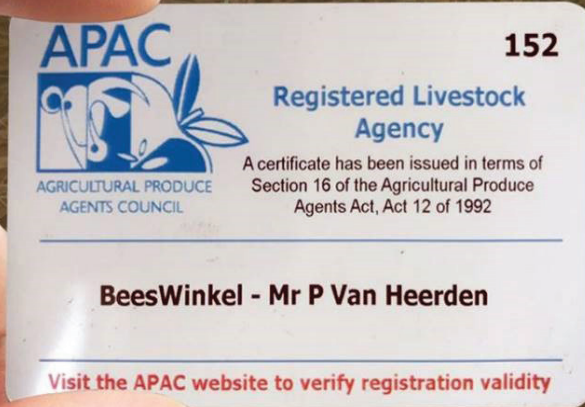
# APAC

AGRICULTURAL PRODUCE AGENTS COUNCIL



[www.apacweb.org.za](http://www.apacweb.org.za)

## IS YOUR AGENT COMPLIANT?



Suite Number 69, Private Bag x 9,  
East Rand, 1462



Tel: (011) 894-3680, 087 095 1335,  
Fax: (011) 894-3761

## DEMAND TO SEE IT!



# RELIANCE

## POULTRY EQUIPMENT

Email: [sales@reliancepoultry.co.za](mailto:sales@reliancepoultry.co.za)

© MES CON SA



### COMMERCIAL POULTRY KEEPING CAGES

Multiple tiered cages available as single units or custom-built to fit requirements. Supplied complete with automated feeding-gantry or chain feeding systems. Manure removal and manure handling conveyors. Horizontal self-locking gates. Standard thickness of 0.8mm and 1mm. One nipple and drip cup per partition. One 5lt header tank including float valve per tier. Wire thickness - 2.5mm. Cages are available in starter units and follower units, accommodating 100 commercial layers per two tier cage, 150 commercial layers per three tier cage and 200 commercial layers per four tier cage.

**MANUFACTURING  
EXCELLENCE  
FOR AFRICA**

Peter Kinnear : +27 (0) 82 655 2411  
Johann Muller : +27 (0) 82 561 4731  
Mark Joyce : +27 (0) 82 957 7590  
Lucas Monyai : +27 (0) 74 655 1081





Farming with pinpoint precision



WWW.DFMTECHNOLOGIES.CO.ZA

**OUR PRODUCTS**    **HARDWARE** : SOIL MOISTURE PROBES | LOGGERS | AUTOMATION | WEATHER STATIONS  
                           **SOFTWARE** : MB4000 | FARMPRO | PROBE UTILITIES | ICS1



With climatic changes aggressively impacting resource availability, our clients have taken a leap towards new age thinking methodologies of using the best of what is available with low cost implications.

DFM provides solutions for your agriculture needs, be it software or hardware. With our products you can manage and automate your farming, save water and produce more.

SCAN ME



Tel: +27 (0) 21 904 1154 | WhatsApp: +27 (0) 71 593 6449

FARMERS that are in need of SILAGE due to the CORONA pandemic, please contact us:

# KUILVOER

BOERE wat hulp met KUILVOER benodig agv. die CORONA pandemie, kontak ons gerus:

*We can also produce & wrap-bale your SILAGE for you, on your farm!*

*Ons kan ook jou KUILVOER vir jou kerf, baal & seel op jou plaas!*



**S**AXENI AGRIC, as dealers of **AGRONIC MultiBalers** (Models 1220 & 820) now offer these magnificent machines that can ensile forage (maize, lucerne, wheat, oats, livestock feed or even wooden chips, etc.) in chopped or processed form, in wrapped bales, ready for use and easy to transport.

The quickest oxygen removal rate of any ensiling process ensures highest quality. ▶ 1 Year Warranty on machines & spares.

AGRONIC 1220 MultiBaler produces a BALE with spec's:

- Size: ± 1m<sup>3</sup>
- Weight: 750 - 1000kg depending on material & moisture
- Diameter: 1 - 1.2m & 1m wide

AGRONIC 820 MultiBaler produces a BALE with spec's:

- Size: ± 0.5m<sup>3</sup>
- Weight: 300 - 400kg depending on material & moisture
- Diameter: 80 - 90cm & 85cm wide

PRODUCTION: up to 40 bales / hour for both machines

For more information, please contact:

**Emje Ferreira** (Technical Info)  
c: 082 908 5004  
e: emje@saxeni.co.za

**Flip Hennop** (Director)  
c: 071 607 7929  
e: flip@saxeni.co.za

   [www.saxeniagric.co.za](http://www.saxeniagric.co.za)



**SAXENI**  
**AGRIC**  
AGRONIC MultiBalers

We are also DEALERS of HYUNDAI FORKLIFTS, SANY CRANES & FUEL TANKS please visit [www.saxeni.co.za](http://www.saxeni.co.za) for more information:





# RELIABLE DIESEL ENGINES



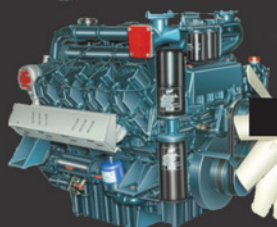
HA-Series: 14.0kW to 89.0kW



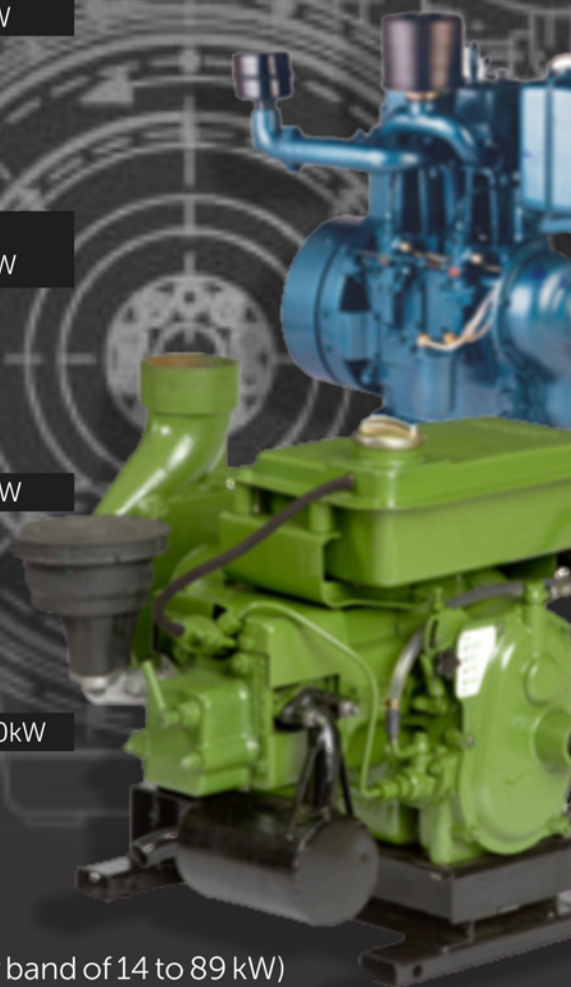
R-Series: 18.5kW to 118.0kW  
K-Series: 135.0kW to 160.0kW



SL-Series: 173.7kW to 222.3kW



DV-Series: 360.0kW to 889.0kW



### OUR PRODUCTS

- ▲ Agri Engines | Pumpsets
- ▲ HA Series (Air cooled engines in Power band of 14 to 89 kW)
- ▲ R1040 | R1080 Series (Water cooled engines in Power band of 20 to 140kW)
- ▲ SL90 Series (Water cooled engines in Power Band of 173.7kW to 264 kW)
- ▲ DV Series (Water cooled V-configuration engines in Power Band of 363kW to 889.0kW)
- ▲ Flameproof Diesel Engines from 54kW to 124kW

+27 (0) 11 493 3330 | [kirloskarsa@tiscali.co.za](mailto:kirloskarsa@tiscali.co.za)

SCAN ME



# KIRLOSKAR

## COMMITMENT TO QUALITY AND CUSTOMER SERVICE

**KIRLOSKAR ENGINES SOUTH AFRICA (PTY) LTD (KESAL) WAS ESTABLISHED IN NOVEMBER 2003 AND IS THE AUTHORIZED SOLE DISTRIBUTOR OF KIRLOSKAR DIESEL ENGINES AND ASSOCIATED EQUIPMENT IN SOUTH AFRICA, MOZAMBIQUE AND BOTSWANA.**

KESAL entered the South African engine market with the main focus on engines for general industrial applications, construction, agricultural equipment, water pumps, mining equipment and diesel powered generating sets.

KESAL offers quality products, at competitive prices, backed by immaculate after sales service to suit the demands of any industry. In turn, this leads to reduced investment and running costs, with the result being a decrease in total cost of ownership (TCO).

KESAL's key focus has been in providing customers with comprehensive solutions for diesel prime mover requirements. We strive to offer products to suite the application and requirement by being versatile in our engine scope of supply.

KESAL is very active in the local market offering various repowering solutions for existing as well as new applications.

KESAL has an aggressive stocking model that allows for excellence in sales and service delivery.

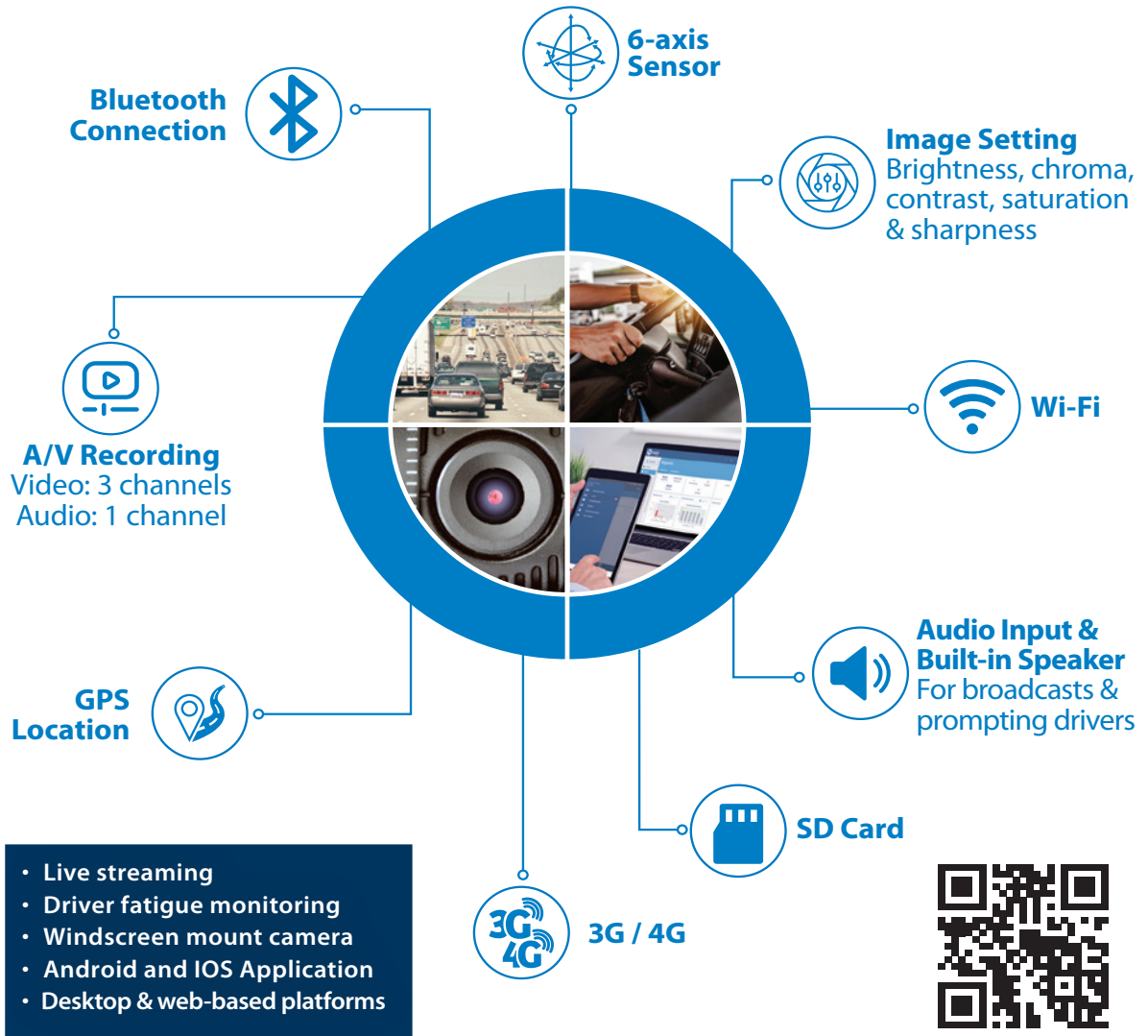
KESAL has already supplied more than 11,000 engines in Sub-Sahara Africa for various market segments.

This year at Nampo we are showcasing our very first electronic governed air cooled diesel engine commonly used for underground mining operations. With a current population of over one thousand engines actively running underground, this new technology will benefit the mining industry.

Secondly, but not least, we are also showcasing our new water cooled engine models (4K1080TA and 6K1080TA) commonly used for power generation and water pumps. The smaller casing produces more power in its class, so Kirloskar have lots of faith in the new engines.

Visit the website [www.kirloskarsa.co.za](http://www.kirloskarsa.co.za) for more information on Kirloskar's wide range of products.





# Ctrack adds even more features to the game changing **Iris video monitoring and telematics solution**

Ctrack by Inseego, a leading vehicle telematics, tracking and fleet management services provider, has added even more features to the Ctrack Iris video monitoring and telematics solution, enabling fleet operators even more control and productivity from their vehicles and assets.

By monitoring crew activities, it is possible to improve and enforce company processes and procedures and reduce theft, pilferage and stock damage. Furthermore, the video solution from Ctrack can improve vehicle route optimisation, increase load frequency and hasten turnaround times.

Ctrack Iris is a high-quality, customisable video monitoring solution ideal for rental vehicles, light deliveries, fleet vehicles, heavy commercials, general machinery and busses, and will now feature a newly developed dashcam.

Apart from a dual view (front and cab-facing) camera solution with infra-red night vision, the new three channel dash cam includes ADAS (Advanced Driver Assist

System). ADAS includes a range of electronic systems that help the driver while driving. When designed with a safe human-machine interface, they are intended to increase car safety and more generally road safety.

While most road accidents occur due to human error, the automated system which is provided by ADAS is proven to reduce road fatalities by minimizing these errors.

ADAS safety features are designed to avoid collisions and accidents by offering technologies that alert the driver or operations centre to potential problems.

Fatigue monitoring can be added to the Ctrack dash cam as an optional extra. This will require a third camera to be equipped to the dashcam specifically targeting the facial features of the driver, picking up on anomalies such as smoking, looking down at a cell phone or any out of the ordinary behaviour.

ADAS alerts drivers to other cars or imminent dangers and has a lane departure warning system.

Video footage can be recorded in eight quality settings and real-time video streaming can be viewed on mobile devices giving fleet managers / operators absolute control over their asset.

Fleet owners can also benefit from a reduced number of insurance claims and settle claims much faster by using video evidence from the stored Iris footage. Iris can also be used to lower fuel consumption and improve vehicle maintenance through better driving, while also reducing diesel and goods-in-transit theft.

Ctrack Iris is supported by cloud-based, web software and a password protected mobile application. These platforms provide video and dashboard event management, and alarm triggers in real-time, ensuring reduced asset risk, more productive drivers, productive route management and ultimately reduced operating costs.

Ctrack Iris is a sustainable, long-term video tracking solution of the highest order, keeping your assets "Always Visible".

## Ctrack Iris



RENTAL VEHICLES



LIGHT DELIVERIES



FLEET VEHICLES



HEAVY COMMERCIAL



AGRI



# Precision with **ABSOLUTE AGRI**

Absolute Agri is an innovative web-based program that uses leaf analysis to generate customised scientific spray programs for crops.



Rolfes Agri (Pty) Ltd

Reg. No. B5651 Act No. 36 of 1947





# CLEAN-OUT

Sukkel jy om seep in die hande te kry ?

CLEAN-OUT werk vir handewas teen 5ml/l water



**Rolfes**  
Agri



# PATHFINDERZA

ONE STEP AHEAD

© MES CON SA

## FIND YOUR THREAT BEFORE IT FINDS YOU!



+27 (0) 86 040 1017  
+27 (0) 83 414 4974  
anneke@pathfinderza.com  
www.pathfinderza.com

### INTRUSION DETECTION



## WHAT IS THE PATHFINDER SYSTEM?

AFFORDABLE, LONG LIFE, LONG RANGE,  
BURIED SEISMIC SENSORS

FOR A DEMONSTRATION

SMS the word "PATH"

to 47052

sms will cost you R2.00

## IT WORKS LIKE THIS...



DETECTS - VEHICLE MOVEMENT



DETECTS - FOOT TRAFFIC



DETECTS - EQUIPMENT POWER STATUS

## ALERTS



- MONITORING
- DETECTION +2min
- DETECTION



SCAN ME

Download APK



# AGRICON

**CAN YOU REALLY AFFORD NOT TO ADD VALUE TO YOUR SCARCE ANIMAL FEED RESOURCES?**

WE CAN ALL AGREE THAT GLOBAL WARMING HAS IMPACTED ON EACH AGRICULTURAL BUSINESS IN VARIOUS WAYS WHICH PUTS PRESSURE ON OUR RESOURCES. FOR THIS REASON, AGRICON PELLETING FOCUS ON SOLUTIONS TO SAVE ON FEED WASTAGE, BUT ALSO TO IMPROVE THE QUALITY OF AVAILABLE FEEDS SO THAT THE FARMER CAN GET MORE VALUE OUT OF HIS FODDER.

© MES CON SA

As much as this sound like a great marketing campaign, it was proven over the past 26 years by Agricon. Our pelleting machines do not only save the farmer a minimum of 30% on wastage of loose feeds, but also leads to a 14.2% increased digestibility of starch. To add to these wonderful improvements in quality, we have seen how animals devour pelleted feeds which they would not touch in a loose form, because the taste improved during the processing.

Dust has become a reality in our environment and large amounts are present in our feeds which can cause all kinds of lung diseases. By pelleting feeds, dust is eliminated and feed is preserved for longer as it is highly compacted and sealed with a steam layer during the pelleting process. For these reasons, pelleted feeds can be stored more effectively and for longer periods.



So who is Agricon Pelleting? It is important in today's economy to select ethical businesses who can support their products and has a good reputation. Agricon is the World Leader in small to medium sized pelletisers because we produce these machines locally at the highest standards. Agricon believes so much in their workmanship, that we are prepared to trade in older machine and subsequently have a big demand for used Agricon equipment. We appreciate that it is a big investment, so our machines have to be applicable in various sectors. We can proudly say that any Agricon Pelleting machine can pelletise animal feeds, organic materials, some fertilizers and even renewable energy products. These machines can be supplied in Single-, Three phase, PTO driven and to a lesser extent in solar powered units.

**CALL AGRICON TODAY TO SPEAK TO RIANA OR JOHAN WHO CAN ADVISE YOU ON THE BEST PELLETING SOLUTIONS FOR YOUR FARM, YOUR POCKET AND YOUR NEEDS.**  
**INFO@AGRICONRSA.COM | WWW.AGRICONRSA.COM | TEL: +27 (0) 71 877 3324**



# WÊRELDKLAS GRAS VIR AFRIKA



Spesialiste in meerjarige somerweidingsgewasse asook winter- en somerdekgewasse.

*Panicum Maximum-kruis:*



*Panicum Maximum (witbuffel):*

## MOMBASA TANZANIA

*Brachiaria Brizantha*

## MARANDU



## BRACHIARIA MG-4

*Brachiaria Brizantha*



- » Hoë droë materiaal-inhoud.
- » Hoë droogte weerstandigheid.
- » Goeie hergroei na beweiding.
- » Uitstekende voedingsgehalte en voerproduksie.
- » Baie smaaklik en hoogs verteerbaar.
- » Sekere grasse is koebestand.
- » Sekere kultivars is ideaal vir kuilvoer.

Kontak ons vandag nog vir topgehalte diens en onverbeterlike produkte

**AFRIKA-VERSPREIDERS:**

Tel (Kantoor): 010 591 2226 | Epos: info@brasuda.co.za | Lodewyk Koch: 084 800 8835 | www.brasuda.co.za

# BRASUDA (PTY) LTD, SPESIALISEER IN MEERJARIGE SOMERGRASSE, ASOOK WINTER- EN SOMERDEKGEWASSE

Ons verskaf tans 4 hoofspesies grasse wat ons self ontwikkel en veredel  
in Brasilië en invoer na Suid-Afrika.

## DIE GRASSE SE HOOFKARAKTEREIEKAPPE IS:

### BRACHIARIA BRIZANTHA (GESKIK VIR DROËLAND)

#### BRACHIARIA – MG-4 (MEES DROOGTEBESTAND)

- Geskik vir weiding en maak van hooi
- Grondvrugbaarheidslaag
- Smaaklik en goeie verteerbaarheid
- Hoë droogtebestandheid
- Proteïeninhoud 9 -11 %
- Produseer 10 - 12 ton/dm/ha
- Plantdigtheid 8 kg/ha

#### BRACHIARIA – MG-5

- Geskik vir weiding en maak van hooi
- Smaaklik en goeie verteerbaarheid
- Hoë droogtebestandheid
- Proteïeninhoud 8 -13 %
- Produseer 10 - 20 ton/dm/ha
- Plantdigtheid 8 kg/ha

### PANICUM MAXIMUM (WITBUFFELSGRAS)

#### MOMBASA

- Geskik vir weiding en maak van hooi en kuilvoer
- Smaaklik en goeie verteerbaarheid
- Groei oor 2 m
- Kouevatbaarheid: medium
- Proteïeninhoud 12 -16 %
- Produseer 20 - 30 ton/dm/ha
- Plantdigtheid 6 kg/ha

#### TANZANIA

- Geskik vir weiding en maak van hooi en kuilvoer
- Baie smaaklik en verteerbaar
- Goeie weidingsgewas
- Kouevatbaarheid: medium
- Proteïeninhoud 12 -16 %
- Produseer 20 - 26 ton/dm/ha
- Plantdigtheid 6 kg/ha

#### PAREDAO

- Nuwe gewas
- Geskik vir weiding en maak van hooi en kuilvoer
- Uitstekende smaak en verteerbaarheid
- Goeie melkproduksie
- Droogtebestandheid - hoog
- Goeie weidingsgewas
- Kouevatbaarheid: medium
- Proteïeninhoud 10 -16 %
- Produseer 30 - 35 ton/dm/ha
- Plantdigtheid 6 kg/ha

#### ARIES

- Geskik vir weiding en maak van hooi
- Die mees smaaklike en verteerbaarste witbuffelsgras op die mark
- Goeie weidingsgewas vir skape, bokke, perde en beeste
- Kouebestand
- Proteïeninhoud 10 -15 %
- Produseer 18 - 20 ton/dm/ha
- Plantdigtheid 6 kg/ha

### PENNISSETUM (OLIFANTSGRAS)

#### CARAJAS (BANAGRAS KRUIS)

- Geskik vir weiding en kuilvoer
- Baie smaaklik en verteerbaar
- Goeie kuilvoerprodukt
- Kouebestandheid: hoog
- Proteïeninhoud 14 -16 %
- Produseer 40 - 50 ton/dm/ha
- Plantdigtheid 40 kg/ha

### SETARIA SPHACELATA

#### TIJUCA

- Geskik vir weiding en maak van hooi
- Smaaklik en goeie verteerbaarheid
- Grondvrugbaarheidslaag
- Groei tot 1.6 m
- Kouetoleransie: goed
- Droogtebestandheid: baie goed
- Proteïeninhoud 7 -9 %
- Produseer 10 - 12 ton/dm/ha
- Plantdigtheid 6 kg/ha

### MENGSSELGRASSE

#### 4 GAME

- Mengsel van 25% Smutsvingergras, 25% Rhodes, 25% Panicum Maximum Aries, 25% Bracharia MG-4
- Agricoate wat help met wortelontkieming en wortelgroeistimulasie
- Vestig maklik
- Geskik vir weiding en maak van hooi
- Goeie weidingsgewas vir wild, skape, bokke, perde en beeste
- Kouebestand
- Proteïeninhoud 8 -13 %
- Produseer 9 - 15 ton/dm/ha
- Plantdigtheid 10 kg/ha

### LEGUME (PEULGEWASSE)

#### JAVA

- Geskik vir weiding en maak van hooi
- Smaaklik en verteerbaar
- Kouebestandheid: laag
- Kan in swak grond geplant word
- Sit 150 kg N/ha/jaar
- Proteïeninhoud 18 -23 %
- Produseer 5 - 9 ton/dm/ha
- Plantdigtheid 5 kg/ha

### WINTER EN SOMER DEKGEWASSE

- Brasuda maak 'n pasmaak dekgewas vir die boer wat sy eie behoeftes in ag neem soos die verlangde plantdatum, lokaliteit en streek.



Lees ook meer oor al die ander grasse wat ons invoer en besoek gerus ons webblad by  
<http://www.brasuda.co.za> en Facebook op <https://www.facebook.com/brasuda/> vir meer inligting.

# STAY HYDRATED IN HOT OR COLD WEATHER WITH ATLASWARE®

— LIFELONG GUARANTEE —



Now you can have a refreshingly cold drink in the sweltering summer, or a comforting hot coffee when it's cold outside. The Atlasware bottle is made to adapt to the weather. Plus, its smooth, contoured finish makes it easy to store, as it fits in just about any place you can imagine – perfect for the gym or trail. The bottle is perfectly designed for everyday use, with these unique features:

- Unbreakable double-wall construction
- Leak-proof, shock-proof &

#### 100% rust-proof

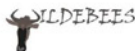
- Preserves flavour & freshness
- Suitable for indoor & outdoor use
- All Atlasware products are certified BPA-free

Atlasware bottles are expertly designed using spacecraft technology. A highly insulating layer is sandwiched between two layers of durable, high-tensile stainless steel.

**Try it – it will fast become your favourite piece of gear!**



For your nearest stockist, go to [atlasware.co.za](http://atlasware.co.za)





**4x4**

**CRUISER AND TOYOTA 4WD EXPERTS**



- Parts - original, replacement and used
- Reconditioned engines, transmissions and differentials
- Fully equipped and RMI certified workshop
- Repairs, maintenance and rebuilds
- Suspensions, snorkels and accessories
- Cruiser and Toyota 4WD Game viewers
- Specialised mine vehicle manufacturing
- Exclusive branded clothing

**LAND CRUISER AND TOYOTA 4WD ONE STOP SHOP FOR PARTS AND MORE**

**CONTACT US**

- +27 [0] 12 545 0200
- info@n14x4.co.za
- www.N14x4.co.za

**ADDRESS**

- PYRAMID** Plot 6, Olifant Street, Haakdongrilaagte, Pyramid, Pretoria
- MONTANA** Shop 5, Montana Value Centre, 1151 Tibouchina avenue, Montana Park, Pretoria



Logistics Transport Globally

SAFE, SMOOTH AND RELIABLE  
FREIGHT MANAGEMENT SOLUTIONS



SCAN ME



info@ltgfreight.co.za  
www.ltgfreight.co.za

**WE DELIVER A SUPERIOR AND PERSONALISED  
FREIGHT AND LOGISTICS SERVICE**



# LTG- Time to stay positive



As the world scuttles to contain which is probably the greatest global crisis of our lifetime, the question bodes how we as a company will respond to this reality. In the recent events of the COVID-19 pandemic which has hit the whole world we have to stay positive in these trying times. Businesses are taking financial strain and the weakening of the ZAR to the USD also hampers business.

However, we are a company that has proven we stick together, no matter what life throws at us. We at LTG remain positive and hope that our existing and prospective clients remain the same. We endeavour to still service the various industries i.e., agriculture, automotive, engineering, medical accessories, clothing and many more. Our offices remain open and we have implemented

strict guidelines in our offices and warehouses to ensure the virus does not infiltrate our work environment. We have the necessary contingency plans in place should it be required. Our staff are very dedicated, hard-working, valued employees whose communication skills with customers remain of the highest standard. Our client's needs are still number one and accurate feedback are still key.

Our air and sea freight shipments will carry on as usual and we are in close contact with our worldwide agents on any updates and this will be carried through to our customers.

We are still a proud Level 2 BBEE company who are also ISO 9001:2015 internationally certified.

With the above in mind, we're challenged by the Word encouraging us not to succumb to fear: 2 Tim. 1:7 – "For God has not given us a spirit of fear, but of power and of love and a sound mind". Our posture is led by faith and not fear. It's wise to protect ourselves against this outbreak, but we can have peace in our hearts knowing our future is safely in God's hands. God is bigger than the Coronavirus.

**TO LTG YOU ARE NOT JUST A NUMBER,  
YOU ARE A VALUED BUSINESS PARTNER!**

# PREDICTABLE UNIFORMITY

Value to your business

## Best uniformity matters

- Consistent product weight ranges
- Efficient processing performance
- Best uniform 'as hatched' broilers
- Higher yield value
- Reduced product 'downgrade'
- Increased profits

**Theo Bezuidenhout**  
Technical and Sales Executive  
Tel: +27 (0)83 257 3025  
E-mail: theo.bezuidenhout@rdfoods.com  
[www.cobbsa.co.za](http://www.cobbsa.co.za)



**ONE FAMILY.  
ONE PURPOSE.**

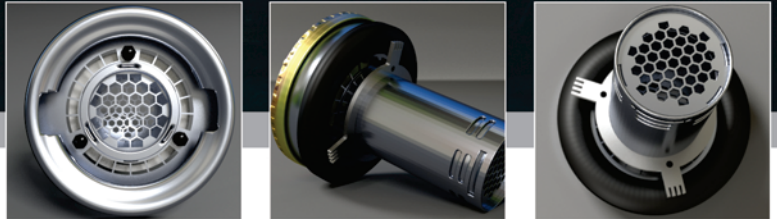


# Diesel Guard

©MES CON SA

## PUT A STOP TO DIESEL THEFT NOW

DESIGNED TO SOLVE YOUR DIESEL THEFT PROBLEMS



### COMPLETE PROTECTION AGAINST DIESEL THEFT IN TRUCKS, HEAVY MACHINERY & TRACTORS

Our range of products are exported worldwide and has represented this sector of the security market, at a number of shows and seminars and expos.

Made of durable stainless steel, the diesel guard fits permanently onto the filler neck of vehicles. Affording maintenance & management free diesel theft prevention, while allowing easy high volume refuelling.

- Patented design
- Maintenance free
- Corrosion resistant
- No drilling or riveting

#### THE ULTIMATE DIESEL THEFT PROTECTION SYSTEM



NO Siphoning possible!

WITH 75+ DESIGNS, WE  
HAVE THE RIGHT FIT FOR  
YOUR MAKE OF VEHICLE

info@dieselguard.co.za | orders@dieselguard.co.za  
+27 (0) 31 766 1976 | +27 (0) 82 758 6811



From Producer to the World



## AN EXTENSIVE RANGE OF PASTURE, FORAGE & FIELD CROP SEEDS

to help support your farming operation

Improve your yield with Agricote<sup>®</sup>, coated seeds that offers better seed to soil contact, improved survival of seedlings through added nutrition.



**AVAILABLE SEED:** Teff • Babala • Forage Sorghum • White Buffalo Grass\*  
• Blue Buffalo Grass\* • Bristle Grass\* • Smuts Finger Grass\* • Rhodes Grass\*  
• Eragrostis\* • Bermuda\* • Kikuyu\* • Paspalum\* • Cowpea • Dolichos Bean •  
Lucerne\* • Vetch • Clover • Cocksfoot • Rye Grass • Rye • Oats • Japanese Radish  
• Open Pollinated Maize • Ground Nut • Dry Bean • Grain Sorghum • Sunhemp

*\*Agricote treated seeds*



Advance Seed

**Johannesburg:** 8 Jacobs Street, Chamdor, Krugersdorp, South Africa, 1740  
Tel: +27 11 762 5261 • Fax: +27 11 762 4111

**Cape Town:** Tel: +27 21 552 0456 • **Kwa-Zulu Natal:** Tel: +27 33 346 0639  
sales.za@agtfoods.com • www.agtfoods.co.za



'Icon' was developed by selection among survivors from old fields of 'Aurora'. Plants were selected on plant characteristics, superior fodder yield, reliable seed production and improved disease and pest resistance. In each cycle of selection plants with superior features were retained and others were eliminated before flowering

The Australian variety 'Aurora' has performed very well in New South Wales and Argentina. The aim was to produce a broadly adapted and high yielding variety by selection of superior plants from within a proven variety. Traditional breeding methods were used to develop 'Icon'.



#### Agronomic characters

Plants are moderately tall with semi-erect leafy stems. 'Icon' plants are moderately winter active (rating 7) with strong summer growth, vigorous recovery from cutting or grazing and good survival under grazing. It is early flowering with flowers varying from light to dark blue. In resistance to pests and diseases 'Icon' is superior to 'Aurora' (see table 1). Independent tests for levels of resistance in 'Icon' were conducted by Crop Characteristics Inc. MN, USA.

**Table 1: Disease and pest resistance of 'Icon' and 'Aurora'**

	SPOTTED APHID	BLUE APHID	PEA APHID	PHYTOPHTHORA	ANTHRACNOSE
<b>ICON</b>	<b>HR*</b>	<b>HR</b>	<b>R</b>	<b>HR</b>	<b>S</b>
<b>AURORA</b>	<b>HR</b>	<b>MR</b>	<b>MR</b>	<b>R</b>	<b>MR</b>

\* HR – highly resistant, R – resistant, MR – moderate resistant and S - susceptible

To assess hay production potential two hay cuts were taken in a two year old stand. In the first cut 'Icon' out yielded 'Aurora' by 16% and in the second by 32%.

In a comprehensive trial established at Keith in South Australia, the performances of 28 varieties and elite lines were compared in an irrigated replicated field trial. The yield of 'Icon' over three hay cuts was 2.33 tonnes/hectare, 10% more than 'Aurora' and other comparable varieties (see below).

Icon 2.33 t/ha  
 Aurora 2.12 t/ha  
 Genesis 2.08 t/ha  
 Sardi 7 2.05 t/ha  
 LSD (5%) 0.27 t/ha

The above trials indicate the 'Icon' is clearly more productive and more pest and disease resistant than its parent variety 'Aurora'.

Icon is protected under Plant Breeders Rights.



# Piket

## Implemente

tel: +27(0)22 913 2435  
 e-pos: info@piket.co.za  
 web: www.piket.co.za

10-RY



8-RY



6-RY



14-RY



## NO TILL DEKGEWAS FYNSAAD PLANTER

- Modelle: 6-Ry / 8-Ry / 10-Ry / 14-Ry / 20-Ry
- 3-Kompartement saad, fynsaad & kunsmis kis.
- Plant van dekgewas in wingerde & vrugteboorde of weiding op suiwel & vee plase.

16-RY



14-RY / 20-RY:  
 PLANT WEIDING OP  
 SUIWEL & VEE PLASE



6-RY / 8-RY / 10-RY:  
 DEKGEWAS IN WINGERDE  
 & VRUGTEBOORDE



NO TILL: PLANT IN  
 GEVESTIGDE WEIDING



MAKLIK & VINNIGE  
 KALIBRASIE




ONS **VERKOOP** 'N HELE  
 VERSEIDENHEID **SAADKISTE**,  
 SOOS HIERDIE  
**1-3 KOMPARTEMENT**  
**PIKET SAADKIS**

20-RY



Kontak ons vir meer inligting by tel: +27(0)22 913 2435 en/of  
 stuur 'n e-pos aan: info@piket.co.za of besoek: www.piket.co.za



# ons almal moet eet

Om slim te boer beteken:

Om insekte, onkruid en siektes effektief te beheer  
Om grond en water ten volle en volhoubaar te benut  
en soveel as moontlik kos te produseer

Want ons almal moet eet



[syngenta.co.za](http://syngenta.co.za)



syngenta.

Syngenta Suid-Afrika (Edms) Beperk, Privaatsak X60, Halfway House, 1685. Tel. (011) 541 4000. [www.syngenta.co.za](http://www.syngenta.co.za)  
© Syngenta Ag, 2000. Kopiereg op hierdie dokument word voorbehou. Alle ongemagtigde reproduksie word verbied.

   @SyngentaSA



Feeding



Drinking



Climate



Housing

## SUPPLY AND SERVICING OF FEEDING, DRINKING AND CLIMATE CONTROL EQUIPMENT FOR ALL POULTRY PRODUCTION OPERATIONS

### POULTRY & LIVESTOCK FARMING EQUIPMENT SUPPLIERS

- Automatic Feeders
- Nipple and Bell Drinkers
- Layer Cages
- Egg Grading and Packaging Machines
- Breeder Nests
- Skov Systems and Spares
- Wetwalls and Cooling
- Bulk Feed Silos and Cross Auger Systems
- Heating Systems and Ventilation Fans



SCAN ME



Tel : +27 (0) 11 708 3094  
Cell : +27 (0) 76 542 7070  
Email : sales@plasson.co.za

[www.plasson.co.za](http://www.plasson.co.za)



## **AT PLASSON SA, WE ARE PASSIONATE ABOUT AGRICULTURE, PASSIONATE ABOUT OUR CLIENTS AND COMMITTED TO PROVIDING YOU, THE LIVESTOCK FARMER, WITH THE RIGHT SOLUTION EVERY TIME**

From humble beginnings in 1964, Plasson has grown to be one of the most respected poultry and piggery farming equipment suppliers in the international agricultural sector.

Plasson SA, formerly known as PPA, is a wholly owned subsidiary of Plasson and was established when there came a realisation that the agricultural industry will become increasingly dependent on technology for successful and sustainable farming. Data shows that the number of farmers in South Africa are decreasing, while the average size of farms have substantially increased. Farmers are realising the importance of modernisation and technological innovation to continuously increase production, lower input costs and stay competitive in a global market.

Moreover, over the coming decade, meat consumption is projected to continue on an expanding path with the demand continuing to increase. According to the Bureau for Food and Agricultural Policy's (BFAP) most recent agricultural outlook, chicken consumption is projected to accelerate again compared to the recent past, expanding by 27% over the next ten years, whereas egg consumption growth is projected at 9% for the ten-year period.

Farmers need world-class agricultural equipment, technological innovation and expertise to remain successful in a growing and challenging industry. This is where Plasson SA fits in.

PPA was the very first South African poultry equipment supplier to design and build panel housing in South Africa, a venture that proved so successful that panel housing soon became the industry standard in the country. Plasson Livestock started off with the now globally recognised Plasson Bell Drinkers, then developing the class-leading

Nipple Drinking Systems and later adding automatic feeding equipment.

Plasson completes the package of equipment with a comprehensive Controlled Environment solution to suit any surrounding climate. Plasson SA is the official authorised sales and service agent for SKOV in Africa and specifically South Africa. SKOV is an industry leader and a world-renowned name on the international market for climate control and production monitoring equipment and software.

Plasson SA works alongside all leading poultry house construction companies in the industry, whether for broiler production, broiler breeders or commercial layers. Our wide range of feeding, drinking and ventilation equipment can be installed into, and can work with, any of the house designs and building types available. The installation of our range of equipment can also be adapted to fit any house type.

We offer a range of world-class nipple drinker systems for broilers and breeders which allow you to choose the nipple and flowrate tailored to your poultry production needs. Plasson's watering systems are customized to meet the demands of all climate conditions and production environments, while our automatic flushing system enables drinker line flushing with full control of the flushing program via a Wi-Fi application.

Plasson Livestock also has wholly owned subsidiaries in Brazil, France, China, and Mexico, and selected distributorships and agencies that have been set up in key locations all over the globe. Efficient and committed client service, including aftersales service and ongoing support of our lifetime customers, are part of our offer that sets us apart from the rest.



# FERTASA

Fertilizer Association of Southern Africa

## Fertasa, certified credibility.

**WE STAND FOR THE PROTECTION OF  
THE SUSTAINABLE USE OF FERTILIZER.**

FERTASA and its members are committed to the promotion  
of sustainable soil fertility and enhanced plant nutrition.



# Who are we?

## FERTASA MEMBERS ARE COMMITTED TO:

- A code of conduct.
- A set of standards audited by an independent compliance management body.
- Quality products.
- Relevant scientifically-based recommendations.
- Continual learning and improvement.
- Complying with all legal requirements.

### Structure of Fertasa

Fertasa is managed and directed by a Board of Directors who are elected by and representative of the ordinary members. The Board of Directors report to the Management Committee which comprises representatives from all ordinary and affiliate members. The Management Committee appoints operational committees to attend to various aspects of the business of Fertasa.

### Purpose

Fertasa is a recognised and preferred body aimed at promoting the image of the fertilizer industry through:

- Promoting the integrity of each member and building preferential trust for their products and services.
- Enhancing and protecting the interest of its members through effective engagement with government and organised agriculture.

### Mission

To provide a credible platform to promote the responsible and sustainable use of fertilisers.

### Vision

To be recognised as the representative voice for the fertilizer industry and as the stamp of approval for responsible and sustainable soil

fertility and plant nutrition in Southern Africa.

### Board of Directors

The Board of directors manages and directs the business and affairs of Fertasa. The Board comprises six (6) directors, and one (1) executive director (the Chief Executive Officer of Fertasa). The directors are elected by the ordinary members with equal representation from both smaller and larger member companies.

### Core functions

- Actively promote the agro-economic and environmentally accountable fertiliser and aglime practices;
- Develop a positive public awareness and acceptance of the need for fertiliser and aglime use in food production;
- Improve the operating environment within which its constituent industries operate in a spirit of free enterprise and fair trade;
- Assimilate, adds value to and disseminates fertiliser and aglime related information;
- Provide a discussion forum for its members and other parties on all aspects relating to fertiliser and aglime distribution, agronomic advice and product quality.

[www.fertasa.co.za](http://www.fertasa.co.za)

**Fertasa** - Fertilizer Association of Southern Africa

Tel : +27 (0) 12 349 1450

Fax : +27 (0) 12 349 1463

Email : [general@fertasa.co.za](mailto:general@fertasa.co.za)

SCAN ME





**STORAGE + CONDITIONING + MATERIAL HANDLING + STRUCTURES**

**T: +27 011 794 4455**  
**E: [sales@gsiafrica.co.za](mailto:sales@gsiafrica.co.za)**

**SO MUCH IS OUT OF YOUR CONTROL, YOUR PROFIT SHOULDN'T BE.**

**TAKE CONTROL**

**PROTECT YOUR PROFIT. DEFEND GRAIN QUALITY. SPEED THROUGH HARVEST.**



[GSIAFRICA.CO.ZA](http://GSIAFRICA.CO.ZA)

WWW.MIPOWER.CO.ZA



**ENERGY STORAGE SYSTEMS**



**SOLAR ENERGY SYSTEMS**



**WIND POWER SYSTEMS**



**WATER TREATMENT PLANT AND AC**

#### ENERGY STORAGE SYSTEMS

MI Power has been building integrated battery systems for many years. The same degree of expertise, quality control and technological innovation has informed our process of developing high-performance batteries for municipal grid.

#### SOLAR ENERGY SYSTEMS

MI Power delivers the most advanced solar systems, custom financing and progressive sustainability practices. And our fully-integrated design approach to solar systems, battery storage and energy monitoring software makes our unique solar solutions a sound investment with greater peace of mind.

#### WIND POWER SYSTEMS

Whichever wind turbine or service you need; we have what you need to maximize your return on investment while leading the industry in delivering a lower cost of energy for everyone.

#### WATER TREATMENT PLANT AND AC - SUBMERSIBLE BOREHOLE PUMPS

We have a wide range of 3-inch to 10-inch submersible borehole pumps motors and other pumps such as sewage pumps and water treatment plant pumps. Our borehole pumps have proven themselves to be reliable in the harsh Southern African conditions.



+27 (0) 11 036 1562 | [info@mipower.co.za](mailto:info@mipower.co.za)





## BE AN INFORMED FARMER

### SOUTHERN AFRICAS' NUMBER 1 WORLD CLASS AGRICULTURAL LAB

NviroTek Laboratories is an independent national, world class analytical facility for Agriculture in Southern Africa which was established in 2008. The best equipment and techniques available have been utilized to ensure adherence to international standards for quality and turn-around time.

The building which is situated in Hartbeespoort, North West Province, has been designed within environmental and safety standards, to effect optimal flow and processing of large sample volumes. During the benchmarking exercise, formal associations have been established with several prominent North-American agricultural laboratories.

The laboratory follows recognized methods of analyses and is ISO/IEC 17025:2017 accredited (accreditation number T0822).

The company employs experienced staff – the technicians jointly have more than 70 years of experience in agricultural analyses.

This independent laboratory offers a wide range of analytical services such as:

- Soils and Growth mediums
- Leaves, Fruit and Compost
- Environmental and Water
- Fertilizer and Limes
- Animal Feeds and Forage
- Residues
- Nematodes

to the broader agricultural sector throughout Southern Africa.

NviroTek also offers analyses for soil health evaluation in the Solvita test as well as others based on the methods of Cornell University.

Our company has also acquired the license to do nutrient uptake tests on plant petioles.

Microbiological analyses of water, foodstuffs, beverages and swabs are done at our newly acquired laboratory in Wellington, namely Wynland Laboratories who are also SANAS accredited - ISO/IEC 17025:2005 with certificate number T0349.

NviroTek is committed to producing reliable laboratory data which gives direction to the foundation of successful farming.

WE ARE AN INDEPENDANT, ACCREDITED WORLD-CLASS LABORATORY. CONTACT OUR EXPERIENCED PERSONNEL FOR MORE INFORMATION:

Office	: +27 (0) 12 252 7588
Georgie Johnson	: +27 (0) 82 889 0138 Feed, plants & compost
Francois Reeders	: +27 (0) 82 889 0133 Soil, lime, fertilizer & water
Lara Badenhurst	: +27 (0) 83 779 9819 Chromatography laboratory
Wynland Laboratorium	: +27 (0) 21 873 3514 Microbiological tests

[www.nviroteklabs.co.za](http://www.nviroteklabs.co.za)  
[www.wynlandlab.co.za](http://www.wynlandlab.co.za)



SCAN ME

Together we  
grow and  
sustain your  
business



Our passion for excellence helps you grow your business and establish yourself as a preferred supplier of perishable products.



**PPECB**

45 Silwerboom Ave  
Platteklouf, Cape Town  
7560

**Head Office**  
T +27 21 930 1134  
F +27 21 939 6868

[www.ppecb.com](http://www.ppecb.com)





## Fostering confidence in South African Perishable Produce for over 90 years.

**The Perishable Products Export Control Board (PPECB), South Africa's official certification agency for the export of perishable products, celebrates its 94th year of existence this year.**

Established in 1926 out of a need for an authority to regulate the export of perishable products, the PPECB was originally mandated to determine which shipping companies would be used for export and which perishable products would enjoy priority when assigning space aboard vessels.

Since its establishment the PPECB's role has changed dramatically, however it remains a key role-player in the export of perishable produce from South Africa. Cold chain services provided by the organisation include the inspection and approval of equipment such as containers, specialised reefer vessels and cold stores; overseeing loading processes and en-route temperature management of produce. In addition, the PPECB has been appointed as a third party to act on behalf of the South African

Maritime Safety Authority (SAMSA) to approve shippers using method 2 to verify the gross mass of a packed and sealed container.

This is in line with the mandatory amendments to the International Convention for the Safety of Life at Sea (SOLAS) Chapter V1, Part A, Regulation 2 which came into force on 1 July 2016, placing a responsibility on shippers to provide the verified gross mass of a packed container to the carrier or their terminal representative prior to being loaded on board a ship.

In addition to delivering cold chain management services, since 1991 the PPECB has provided quality inspections on perishable products destined for export. Products approved for export carry the passed for export stamp, regarded as a symbol of quality assurance to clients and consumers around the world.

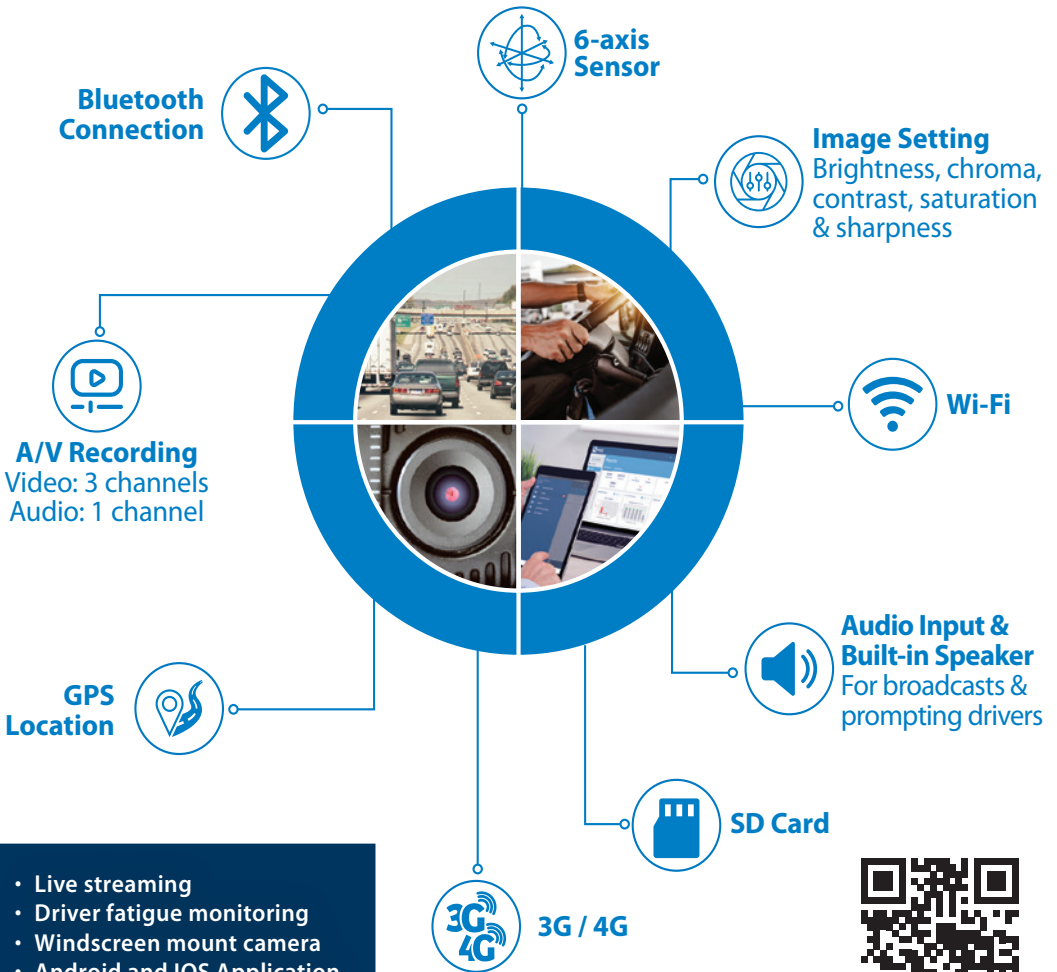
Furthermore, the PPECB's food safety services ensure that food business operators comply with the standards regarding food hygiene and food safety of regulated agricultural food products intended for export. The PPECB's laboratory also provides analytical services which include mycotoxin analysis, fats analysis, dairy testing and maximum residue level testing of pesticides in a myriad of matrices.

By combining over 90 years of expertise and a range of services the PPECB seeks to enhance the credibility of the South Africa export certificate and support its customers to become the preferred suppliers of perishable products world-wide.

**For further information on the PPECB please visit [www.ppecb.com](http://www.ppecb.com) or call 021 930 1134.**



# CTRACK IRIS DASHCAM & ADAS



- Live streaming
- Driver fatigue monitoring
- Windscreen mount camera
- Android and IOS Application
- Desktop & web-based platforms



0860 333 444 | sales@ctrack.co.za | www.ctrack.co.za

Always Visible

Portable walk-in greenhouse tunnel  
for the home gardener

Self-sufficient food propagation has never been easier

Easy to construct



The entire greenhouse can be closed with dual, heavy-duty zips keeping the outside world separate from the cozy growing area

Multiple roll-up windows equipped with insect netting to help control pests.



**INCLUDED:** -25mm galvanised steel poles for endoskeleton  
- UV treated, reinforced PE plastic roof to fit over poles  
- Dual zip, roll up door (front and back doors)  
- Roll up side windows with insect net  
- Full instructions and all tools required for construction  
Galvanised 25mm steel poles easily fit together.



Available in 6 sizes



- 3m long x 2m wide x 2m high = R4 080
- 4.5m long x 2m wide x 2m high = R4 600
- 4m long x 3m wide x 2m high = R5 150
- 6m long x 3m wide x 2.5m high = R8 600
- 10m long x 3m wide x 2.5m high = R11 499
- 12m long x 3m wide x 2.5m high = R13 799

Free delivery to anywhere in South Africa  
All Prices Include. VAT

Contact Details  
Feel free to contact us  
[www.bellandpaton.com](http://www.bellandpaton.com)  
[info@bellandpaton.com](mailto:info@bellandpaton.com)  
Phone: Garth 083 320 2922  
Phone: Oliver 083 650 0711



Don't chop 'em....POP 'em!

- No Petrol
- No Oil
- No Grease
- No Herbicides
- No Noise
- No Safety gear
- No Maintenance

©MES CON SA

**EXTRACT INVASIVE PLANTS & TREES,  
ROOTS & ALL!**



A SIMPLE ONE PERSON TOOL  
3 x SIZES AVAILABLE  
UP TO 50MM STEMS

Tel | Fax: +27 (0) 21 858 1563  
Cell: +27 (0) 83 302 1640  
[terry@treepopper.co.za](mailto:terry@treepopper.co.za)  
[negus@worldonline.co.za](mailto:negus@worldonline.co.za)

[www.treepopper.co.za](http://www.treepopper.co.za)



Knowledge grows



Verbind tot 'n wêreld  
sonder voedseltekort ...  
respek vir ons planeet.



As wêreldklas spesialiste in en verskaffers van anorganiese voerfosfate, aanvullings, konsentrate en voedingsgebalanseerde veevoer, streef Yara daarna om deur plaaslike kennis, internasionale kundigheid en deurlopende tegniese advies, kwaliteit en produktiwiteit, die voorste verskaffer van volhoubare gewasvoeding- en veevoeroplossings te wees wat die winsgewendheid van produsente ondersteun.

Met 'n toenemend groeiende wêreldbevolking, bly ons verantwoordelikheid om die wêreld te voed en die planeet te beskerm, ten spyte van ekonomiese hindernisse, beperkte bewerkbare grond en skaars hulpbronne.

Om sterk verhoudings met ons kliënte te smee, om in mekaar te belê en vertroue op te bou, lei tot volgehoue sukses, want ons glo ... deur saam te werk, kan ons 'n werklike verskil maak.

Tel: +27 (0)31 910-5100 • E-pos: [yara@animalnutrition.com](mailto:yara@animalnutrition.com)

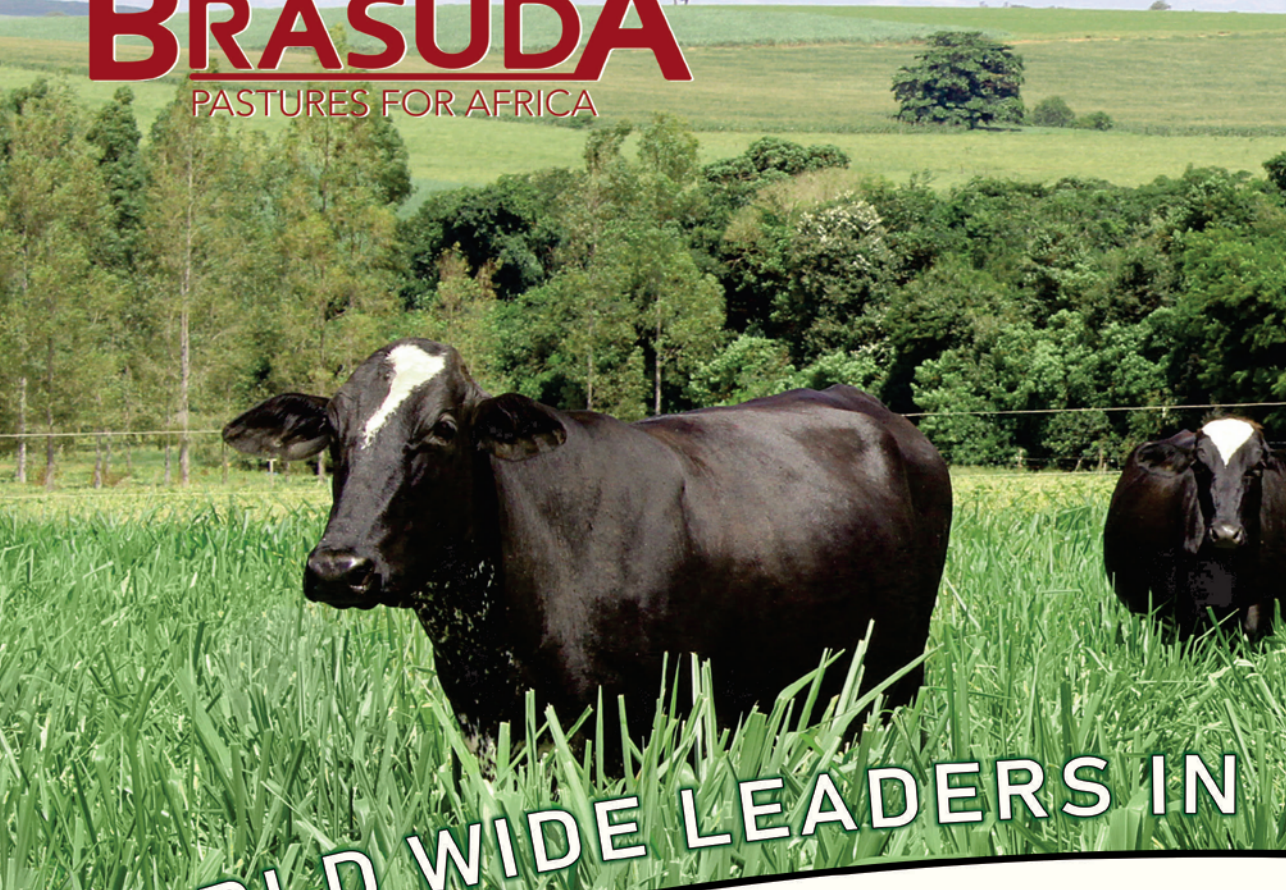
[www.yara.co.za](http://www.yara.co.za)

Yara Animal Nutrition (Edms) Bpk. Reg. No. 2001/025850/07



# BRASUDA

PASTURES FOR AFRICA



WORLD WIDE LEADERS IN

WE SUPPLY THE BEST SUITABLE GRASS

The grass is always green

- Good taste
- High production
- Good grass cut with high nutritional value
- Less water to farm with
- Suitable for irrigation plus dry land

MES CONSULTANTS - 082 563 4427

Lodewyk Koch :

+27 (0) 84 800 8836 | Office: +27 (0) 10 591 2226 | Email: info@brasuda.co.za



PANICUM  
MAXIMUM-  
MOMBASA & TANZANIA





# TROPICAL PASTURE SEED VARIETIES TO THE FARMING INDUSTRY

Partner on **Brasuda's** side!

- ✓ High forage production
- ✓ Excellent nutritional values: more beef, more milk
- ✓ For direct grazing and silage
- ✓ High regrowth capacity
- ✓ Good drought tolerance
- ✓ Great acceptance by animal

Visit our website for more information:  
[www.brasuda.co.za](http://www.brasuda.co.za)

BRACHIARIA  
BRIZANTHA-  
MG 4

Brachiaria Brizantha MG-5  
MATSUDA GENETICS 5  
**Victoria**

4 GAME  
MIX

HYBRID LEGUME  
**JAVA**



# FARM SUSTAINABLY, FARM WITH FREQUENCY

YOU CAN NOW FARM  
IN AN ECO-FRIENDLY  
AND SUSTAINABLE MANNER

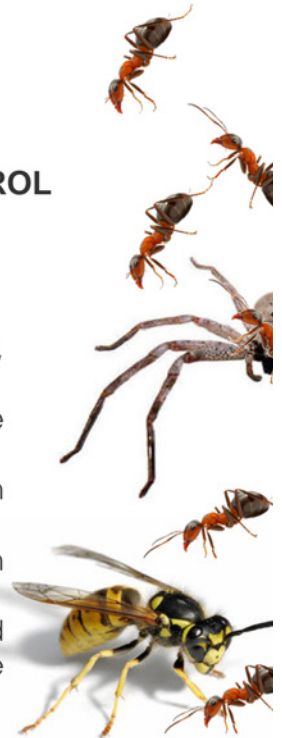


## CRYSTAL TECHNOLOGY

THE SOLUTION TO EFFECTIVE PEST CONTROL

Can you afford to farm without it?  
Pest control has never been this easy

- Species specific and environmentally friendly, cost effective
- Control your pests simply by taking photos, the control is in your hands.
- From photos we can kill any pests on your farm anywhere in the world.
- Improve production and quality in an uncertain time at low cost.
- The only guaranteed pest control in the world and transmissions can be monitored on the farm.



See us online at [www.agrifrequencies.com](http://www.agrifrequencies.com)  
Jan du Plessis 082 429 4055 | [info@agrifrequencies.com](mailto:info@agrifrequencies.com)

# CRYSTAL TECHNOLOGY,

the most advanced Insect control and farming aid in the world,  
environmentally friendly and chemical free.

Crystal frequencies target specific organisms and leave the bees and predators.  
The advanced system can always be updated for new species and new mutations.

Quantum entanglement is used as a medium to transmit the frequencies very accurately to any location, anywhere in the world instantly, and it can be tested to arrive on location. This is done with a quantum transmitter, and a separate transmitter is used for every project, to stay on 24/7.

Its effectiveness has outperformed chemicals on every long-term trial and the results are guaranteed. Chemicals are becoming less effective and the markets demand less and less chemical residues on all types of produce.

The Crystal technology can be utilized on a wide spectrum of applications:

- Control of viruses, fungi, bacteria, plant and animal diseases, insect and rodent control.
- Plaque animals like monkeys and jackal.
- Feed supplements, to improved feed utilization with livestock, soil nutrient supplements, both macro and micro elements.
- Stimulating soil organisms and plant growth, improving yields and sugar content.
- Decalcifying pipes and kettles, and desalination of water and soil. Save 30% water.
- Killing of algae in ponds, dams and swimming pools.
- Domestic products that lasts a lifetime and can always be updated since they are quantum linked to our laboratory.

## GARDEN FAIRY

Stimulate plants to grow, protects against frost, reduce water consumption with 30% and kills garden and home insects like flies' mosquitos, cockroaches, aphid's whitefly etc. effective range 40m radius cost R 800 and is guaranteed for life.

## PEST VIBES

Kills Rodents, mosquitos, flies, cockroaches etc. effective range 40 meters radius cost R 800 and is guaranteed for life, it also comes in a 200m radius for R 1200.

## AQUA STRUCT

Saves 30% water by structuring water, increases blood oxygen levels clean pipes etc. you will require 1 for every 25mm pipe thickness and sells for R1200.

## AUTO STRUCT

Improves combustion effectivity, reducing emissions and saving fuel, both petrol and diesel engines at a cost of R800 and lasts for a lifetime.

## WELLNESS PENDANT

Improves general health and reduces pain and arthritis, for only R 800.

Insect control with frequencies is much more effective than with chemicals and much cheaper, good for the environment and completely safe for all other species, the full spectrum treatment cost only R1200 per hectare per year.

Plague animals and tics are controlled at R10 per hectare for over 1000 hectare farms.

Excellent results have been seen on a Wheat field that went yellow due to nitrogen shortage, and within 1 week the green color and nitrogen shortage was restored with frequencies.

On a milk trial the feed concentrates were reduced with 30% without loss of production and in a trial with laying hens the laying mesh was replaced by maize without reduction in egg production.



*A field with Citrus trees, two photos taken 4 weeks apart, you can see the difference, and, in the background, older trees can be seen with much darker green leaves.*



*Insect numbers on False Codling moth, stinkbug, fruit fly, borers, thrips and macadamia borers etc. are much lower than on chemical treated areas.*

Contact Jan du Plessis at 082 429 4055  
info@agrifrequencies.com | www.agrifrequencies.com



# groeï slim

Kies AMISTAR® Top

1. Help om die gewas se volle potensiaal te verwesenlik
2. Bied uitstekende sistemiese beheer
3. Beskerm nuwe groei

**Die slim keuse vir jou boerdery.**



 **SmartFarm**  
Inspired



syngenta.co.za

 **Amistar® Top**

**syngenta.**

**LEES DIE ETIKET VIR VOLLEDIGE BESONDERHEDE.**

AMISTAR® Top bevat asoksistrobrien 200g/L en difenokonasool 125g/L (Reg Nr. L7897, Wet Nr 36 van 1947) VERSIGTIG. AMISTAR® Top is 'n geregistreerde handelsmerk van 'n Syngenta Groepmaatskappy. Syngenta Suid-Afrika (Edms) Beperk, Privaatsak X60, Halfway House, 1685. Tel. (011) 541 4000. [www.syngenta.co.za](http://www.syngenta.co.za)  
© Syngenta Ag, 2000. Kopiereg op hierdie dokument word voorbehou. Alle ongemagtigde reproduksie word verbied.

   @SyngentaSA



# LICHTENBURG OMHEININGS MATERIAAL

+27 (0) 18 632 0291/2 | stoor.omheining@mccemail.co.za | 107 Thabo Mbeki Rylaan



KWALITEIT | BESKIKBAARHEID | DIENS

## ONS VERSKAF:

- Alle tipe omheiningsdraad (Voëltjedraad, ogiesdraad, kuikendraad, "weldet mesh", ens.)
- Hekke & krippe gemaak volgens u eie behoeftes
- Tenks & tenkstaanders
- Staal snywiele
- Baaltou
- Windpomp parte
- Palisades
- Droppers
- Pale
- Loodgieterspype
- Stutte en nog vele meer

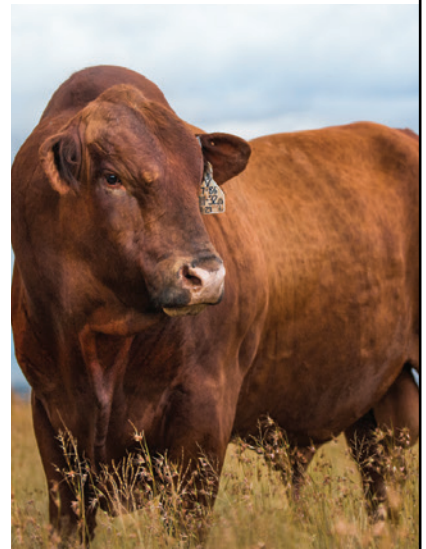
TOT U DIENS!

HIER BESKIKBAAR: **FIO** PRODUCTS



## IT'S ALL IN THE GENETICS

For all of your cattle's artificial insemination needs.



BETTER COWS | BETTER LIFE

TEL: +27 (0) 51 444 3350  
EMAIL: ADMIN@XSEED.CO.ZA

From Producer to the World



An extensive range of **pasture, forage and field crop seeds** to help support your farming operation.

Improve your yield with Agricote<sup>®</sup>, coated seeds that offers better seed to soil contact, improved survival of seedlings through added nutrition.

**AVAILABLE SEED**

- Teff
- Babala
- Forage Sorghum
- White Buffalo Grass\*
- Blue Buffalo Grass\*
- Bristle Grass\*
- Smuts Finger Grass\*
- Rhodes Grass\*
- Eragrostis\*
- Bermuda\*
- Kikuyu\*
- Paspalum\*
- Cowpea
- Dolichos Bean
- Lucerne\*
- Vetch
- Clover
- Cocksfoot
- Rye Grass
- Rye
- Oats
- Japanese Radish
- Open Pollinated Maize
- Ground Nut
- Dry Bean
- Grain Sorghum
- Sunhemp

*\*Agricote treated seeds*



Advance Seed

**Johannesburg:** 8 Jacobs Street, Chamdor, Krugersdorp, South Africa, 1740

Tel: +27 11 762 5261 • Fax: +27 11 762 4111

**Cape Town:** Tel: +27 21 552 0456

**KwaZulu-Natal:** Tel: +27 33 346 0639

sales.za@agtfoods.com • www.agtfoods.com/za



# Climate-smart Agriculture

In recent years there have been a number of new terms being used pertaining to modern agriculture. Terms such as Conservation farming, Regenerative agriculture, Sustainable agriculture and Climate-smart agriculture to name but a few. All of these terms suggest a different approach to commercial and small scale production.

Cover cropping is one of these conservation or regenerative techniques; and as an agricultural practice is becoming more and more accepted and utilised in cropping programs, permanent plantings and livestock enterprises around the world. Individual farmers are examining their traditional farming practices and adapting them to include a cover cropping component.

*One may ask: Why this change?* Farmers themselves have identified that cover crops can add numerous benefits to soil health, which in turn leads to increased



plant and animal vitality and ultimately improved quality of product for human consumption.

These benefits include building soil organic matter, improved water infiltration, reduced weed pressure, reduced soil compaction, nitrogen fixation by legumes, reduced wind and



water erosion, improved yields, food for animals and ultimately increased yields and profitability.

With the very real effects of climate change being felt and observed in agriculture today, if agriculturalists across the board do not consider changing some traditional practices, then food security and long term productions will be threatened.

The soil on any farm is the ultimate resource - and the protection, improvement and then maintaining those improvements to the soil, should be the critical goal of every farmer. Cover cropping is just one of the tools available to producers today to utilise in achieving improved soil potential.

Organisations such as the World Bank and the Food and

Agriculture Organization of the United Nations (FAO) have identified shifts in climate patterns and as a result agricultural practices need to shift with them.

With cover cropping being a relatively young "science", farmer observations and on-farm trials are leading the direction of practical implementation of cover crops while the formal research bodies such as universities and other organisations follow behind with the scientific peer reviewed papers.

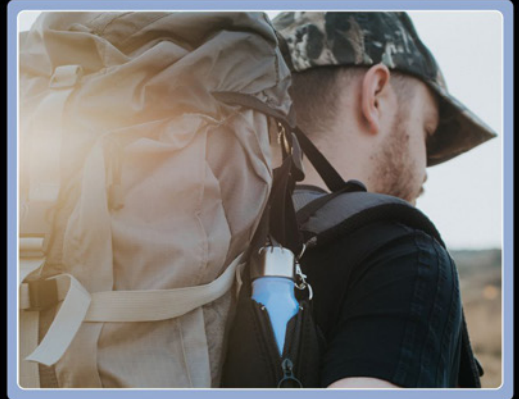
Seed supply companies are providing the backup in researching to which types of cover crops will be most cost effective for farmers and are then making these varieties available. Cover cropping is a universal concept with an individual application and the key is finding South African solutions to South African problems.

Farming remains one of the most innovative professions in the world and as the effects of climate change are felt, so too the innovation of farmers will develop to meet the demands of changing weather patterns and the challenges presented to world food security. Cover cropping is one technique which will assist in climate smart agriculture.

# ATLASWARE

LIFETIME  
WARRANTY

YOU'VE TRIED THE REST,  
NOW GET  
THE BEST!



TO FIND A LIST OF RETAILERS PLEASE VISIT:  
[WWW.ATLASWARE.CO.ZA](http://WWW.ATLASWARE.CO.ZA)

# THE FLASK THAT STAYS...

## COOL WHEN IT'S HOT, HOT WHEN IT'S COLD!

THE ABILITY TO TAKE A BRILLIANT IDEA AND TRANSFORM IT INTO SOMETHING YOU WON'T WANT TO LEAVE HOME WITHOUT, TAKES SOME DOING. AND THAT IS EXACTLY WHAT ATLASWARE HAS DONE BY INTRODUCING A FLASK THAT DOES WHAT IT SAYS IT CAN.

**KEEPS WATER HOT FOR 18 HOURS AND COLD FOR 24 HOURS!**

Today's technology is, of course, the prime reason this flask is so incredibly convenient, reliable and trendy. A highly insulating layer is housed between two layers of durable, high tensile stainless steel. And when you feel the weight of it you'll understand the genius of what is going to become your favourite utensil, all day, every day!

Atlasware is an I.S.O. certified company. It took a lot of innovative research & development to finally arrive at the result we would be satisfied with. A result we could be proud of. The result we know you will love because they're selling like the proverbial "hot flasks"!

Our multi-purpose flasks will make your life more environmentally friendly by replacing harmful materials and plastics with a lifelong stainless steel alternative. An immensely strong, versatile, convenient 'take-it-anywhere' flask that will keep liquid hot or cold around the clock and more!

With its durable properties and lifetime guarantee, it's the only bottle you'll ever need!

"Next to the cell phone, this is the best invention I have ever seen! I have left cold water in the bottle, in my car, all day long in 125 degree weather in Dubai, UAE and to come out at the end of the day to find my water still cold? Unbelievable! We can't afford not to have one!"

- Paul Lockyer (Barrister and Solicitor of the High Court of New Zealand – Legal Consultant UAE)



## ATLASWARE

IS STILL THE BEST BECAUSE  
OF THESE GUARANTEES  
WE GIVE OUR CUSTOMERS:

- Lifelong guarantee
- Unbreakable double-walled stainless steel construction
- Leak proof, shock proof & rust proof
- Preserves flavour & freshness
- Suitable for indoor & outdoor use
- BPA free certified
- Environmentally friendly



SCAN ME

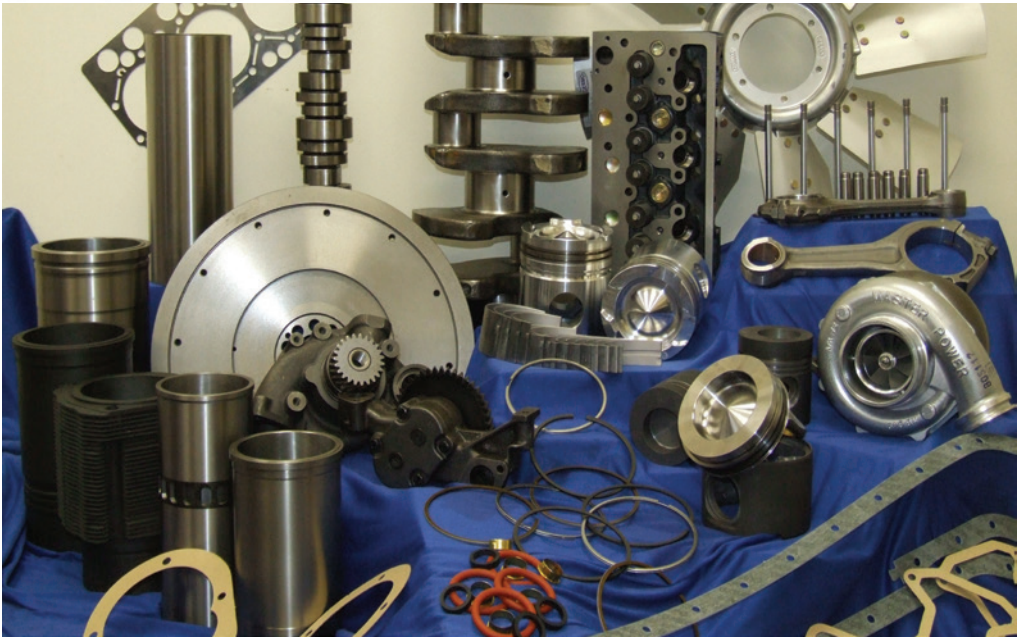
**Atlasware is distributed all over South Africa and can be found at various outdoor shops as well as independent resellers. Find us on Facebook & Instagram @AtlaswareSA.**

# ehd

# COMPONENTS 2005

(PTY) LTD

t/a ENGINE & HEAVY DUTY COMPONENTS



## Distributors of Diesel Engines, Generators, Construction Equipment & Heavy Duty Diesel Engine Replacement parts Suitable for:

ADE  
BELL  
CASE  
CATERPILLAR  
CUMMINS  
DAF  
DEUTZ  
DONG FENG  
FIAT  
FAW

FORD  
GARDNER  
GM DETOIT  
HATZ  
HINO (TOYOTA)  
INTERNATIONAL  
ISUZU  
IVECO  
JOHN DEERE  
KOMATSU

KIA  
LEYLAND  
LISTER  
MAN  
MASSEY FERGUSON  
MERCEDES  
MITSUBISHI  
MWM  
NEUSS  
NISSAN

PERKINS  
PETTER (RENAULT)  
RVI (BERLIET)  
RICARDO  
SCANIA  
SDEC  
VICKERS  
WEICHAI-STEYR  
VOLVO  
YANGDONG

### Johannesburg Head Office

Tel: 011 870 5000  
ehd@ehd.co.za  
sales@ehd.co.za

### Bloemfontein

Tel: 051 430 5404  
ehdbloem@ehd.co.za  
sales@ehd.co.za

### Durban

Tel: 031 700 1160  
ehd.dbn@ehd.co.za  
sales@ehd.co.za

### Cape Town

Tel: 021 510 0567  
ehdcape@ehd.co.za  
sales@ehd.co.za

Manufacturer's names, numbers, symbols, photos and descriptions are used for reference purposes only and it is not implied that the parts referred to are the products of those manufacturers. Warranty conditions are available on our website [www.ehd.co.za](http://www.ehd.co.za)

# SPECIALISED VEGETABLE EQUIPMENT

WWW.REBELO.CO.ZA

# REBELO

AGRICULTURAL GROUP

**RPS**  
RAM PARTS AND SERVICES

**RAP**  
REBELO AGRICULTURAL PRODUCTS

**RAM**  
REBELO AGRICULTURAL MACHINERY



Asa-Lift Trailed Carrot Harvester



Ferrari FMAX Seedling Planter



Forigo D35 Power Harrow



Agricola Italiana Pneumatic Fine Seed Planter



Bateman Self Propelled Crop Sprayer



Ortomec Self Propelled Baby Leaf Harvester

**ASA-LIFT**

**SIRUIK**  
SINCE 1984

**Sorma Group**

**Steketee**

**SIMOX**  
Lec. d'Inform. e Ing. Agr. e Forest.

**Ferrari**  
COSTRUZIONI  
MECCANICHE

**ekko**  
**FORMIT**

**NICHOLSON**  
Machinery Ltd

**MASCHIO**  
**GASPARDO**

**BATEMAN**

**ORTOMEC**

**GAMACO**  
BrimaPack

**FORIGO**  
roteritalia

**BAUER**  
FOR A GREEN WORLD

**agricola italiana**  
PREMIATO DI PRESSIONI SEED DRILLER

📞 011 613 7438

✉ info@rebelo.co.za

Machinery/ Sales

Jose Rebelo 082 716 1664

Parts and Services

Sergio Biallo 082 335 3256

Machinery/ Sales

Richard Rule 072 525 9047

Packaging/ Sales

Leonel Rebelo 071 331 1997

Parts and Services/ Sales

Miguel Rebelo 079 500 3467

Machinery/ Technician

Senzo Mavundla 078 785 2217

Rebelo Agricultural Group

Hall 1 Door 112A

Johannesburg Fresh Produce Market



**WEES  
'N  
INGELIGTE  
LANDBOUER**

*SANAS Geakkrediteerde Toets  
Laboratorium, Nrs: T0822 en T0349*



Noordwes - 012 252 7588    Wes-Kaap - 021 873 3514

[www.nviroteklabs.co.za](http://www.nviroteklabs.co.za)





# HF SOUTHERN AFRICA

NEW & RENTAL OPTIONS  
NOW AVAILABLE FOR  
**HYUNDAI FORKLIFTS!!!**

**SPECIAL OFFER**  
to First  
3 Customers  
**R259 900**  
excl. VAT  
**WARRANTY**  
2 YEARS / 2000 HOURS



## MOVING YOU FURTHER

This **25D-7SA** model boasts a 3 stage 4.8m mast, integrated sideload, minimal electronics & solid tyres.

A powerful Japanese manufactured 3.3l Diesel Engine as well as Front & Rear LED lamps makes our **7SA series**, the perfect workhorse for Africa.

We are delighted to introduce these superb forklifts to the South African market!

**TOUGH, RELIABLE 2.5 ton DIESEL FORKLIFTS**

**CLIENTS** that are  
in need of  
**FORKLIFTS** due to the  
**CORONA** pandemic,  
please contact us:

Head Office: **011 823 2028**

**J. Meyer** 079 503 0245

**J. Venter** 072 378 9892

**info@hyundaiforklift.co.za**

**facebook.com/hyundaiforklifts**

**www.hyundaiforklift.co.za**

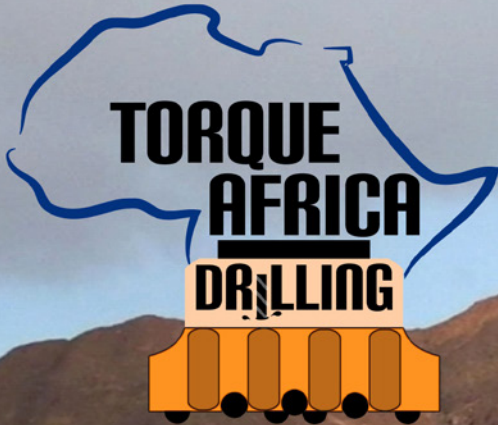
**HYUNDAI**  
MATERIAL HANDLING

We are also **DEALERS** of **SANY CRANES, FUEL TANKS & BALER MACHINES**  
please visit **www.saxeni.co.za** for more information:



SAXENI BUILDING • 55 HARRIS ROAD • ISANDOVALE • EDENVALE • JOHANNESBURG

# TORQUE AFRICA EXP



[www.torqueafrica.co.za](http://www.torqueafrica.co.za)



Drilling in South Africa,  
Neighboring & Foreign Countries



Nardus Bezuidenhout  
+27 (0) 82 829 6016  
[nardus@torqueafrica.co.za](mailto:nardus@torqueafrica.co.za)



## BOREHOLE DRILLING

Water | Exploration | Piling | Blasting



Nielen Visser  
+27 (0) 64 754 7818  
[info@torqueafrica.co.za](mailto:info@torqueafrica.co.za)

SCAN ME





**TECHNOPOL SA**  
ENERGY SAVING MATERIALS

# LIVESTOCK HOUSING & INSULATION

## Industry Leaders in Expanded Polystyrene Products

- Manufacturers of expanded polystyrene products for domestic and export markets
- Bulk insulation and derived thermal insulation products
- Thermal insulation products for walls, roofs, ceilings & floor application



**COST EFFECTIVE ENERGY SAVING MATERIALS  
FOR ALL OUR FARMERS' NEEDS!**

[www.technopol.co.za](http://www.technopol.co.za)

Contact us for more information:

Lammie de Beer

Tel : +27 (0) 11 363 2780

Cell : +27 (0) 82 443 4461



**Technopol SA, founded in 1993, is primarily involved in the manufacturing of Expanded Polystyrene (EPS) and value-added products based on EPS. We also manufacturer value added product using PIR and Rockwool. We specialize in creating innovative building solutions that are energy saving and environmentally friendly.**

Our vision is to exceed customer expectations for quality, safety, sustainability, cost, delivery, value and to become the supplier — and inspirer — of choice for Expanded Polystyrene (EPS) blocks; EPS sheets; EPS cornice; Insulated ceiling solutions; Adhesives and Polymers and Roof solutions, through leadership and innovation.

Our LiteCel® range of Expanded Polystyrene foams find application in a hugely diverse range of applications from Void Filling, (Geolite®) covered with soil and concrete, Thermal Insulation cores for Wall Insulation products, (LiteCore® and Nuwall®), Floor Insulation and Roof and Ceiling Insulation, (LiteSpan®, PolyCool® and SuperCool®), special Agrément Certified IBT building system and decorative products.

At Technopol SA we provide purpose designed products to our customers that wish to construct with Innovative Building Technologies. All new buildings in South Africa must now meet the energy efficiency standards as set out in SANS 10 400 Part XA.

At Technopol we also want to see people impart energy efficiency and thermal comfort into their dwellings and businesses by presenting cost effective fit for purpose products to the market. We don't believe in a one-size-fits-all approach, but rather to provide the customer with a solution specific to their unique and diverse requirements.

We use best practise and proven methodologies to:

- Analyse the needs of our customers and resolve any problems that arise.
- Use the above analytical data, and facts to plot the best possible solution.
- Use a strategic approach to show the customer exactly how we can assist them to reduce their building costs and be more energy efficient.
- Show the customer a roadmap of how we can partner with them, in order to make sure that we continuously add value, and assist them to have an on-going and innovative approach to achieving their building objectives.

At Technopol SA we continuously strive to be at the forefront of pioneering the next level of value, and customer centric solutions to offer to the market. We don't change the customer's needs to suit our product; we tailor the solution to suit the customer's needs.

Technopol SA is committed to supporting the communities within which we operate. We believe in the practice of social responsibility and encourage similar behaviour in our employees and suppliers. We support the conservation of the physical environment and the prevention of pollution at our facilities; and as such our environmental commitments include:

- To constantly increase environmental consciousness and application in all personnel
- o achieve an environmentally friendly work place in order to promote Quality of Life for all employees.
- To constantly strive to reduce any negative environmental impact of our products and processes.
- To continue to invest in improved energy efficiency and energy conservation.
- To conserve natural resources through efficient use and careful planning
- To control the creation of waste and, wherever practicable, recycle materials and waste. Hazardous Waste and effluents will be disposed of in a safe and responsible manner.
- To eliminate or reduce as far as possible the release of emissions or any pollutant that may cause environmental damage.
- To assess new processes for possible negative environmental impact before introduction.
- To undertake regular environmental monitoring and auditing of our activities.
- To adapt to climate change and to ensure mitigation in respect of climate change.
- To protect the biodiversity and ecosystems.
- Life cycle thinking

**To date, Technopol SA is the only Thermal Insulation Manufacturer in South Africa that has an Integrated Management System that is ISO 9001, ISO 14001 and ISO 45001 Standards certified.**

Technopol SA has a team of trained specialists, engineers and technicians who have built the necessary portfolio of experience to provide suitable solutions to any project. Our employees are motivated and active problem solvers.



**One of the factors critical to Technopol SA's success was its decision to distribute its products not only to the South African market, but also Namibia, Swaziland, Lesotho, Botswana, Zimbabwe and Zambia. At our plant in Springs, we undertake a number of rigorous quality checks on all our products in our own laboratory. Only after these checks have been completed will the products be distributed to our customers.**



Logistics Transport Globally

# SAFE, SMOOTH AND RELIABLE FREIGHT MANAGEMENT SOLUTIONS



MES CONSULTANTS - 082 563 4427

[info@ltgfreight.co.za](mailto:info@ltgfreight.co.za)  
[www.ltgfreight.co.za](http://www.ltgfreight.co.za)

**WE DELIVER A SUPERIOR AND PERSONALISED  
FREIGHT AND LOGISTICS SERVICE**

# LTG, INVOERDER VAN FORMAAT!

**LTG LOGISTICS TRANSPORT GLOBALLY (PTY) LTD IS 'N SUID-AFRIKAANSE VRAG EN KLARINGSAGENT, GEBASEER IN GAUTENG MET HUL HOOFKANTOOR IN ROSSLYN, ASOOK 'N TAK IN POMONA**

Dit is 'n volwaardige logistieke maatskappy wat meeding in 'n baie kompeterende industrie wat invoere, uitvoere asook lokale vervoer behels.

As vragagent het LTG noemenswaardige vooruitgang getoon die afgelope paar jaar deur talle nuwe kliënte op te teken, en slegs 'n paar kliënte het ander agente opgesoek. Verblydend is dat selfs van die kliënte teruggekeer het LTG toe in die laaste tyd. Die een groot rede vir dié is die uitstekende diens en kommunikasie wat LTG handhaaf. Hulle word gesien as “doeners” en nie “pratlers” nie!!

Deur LTG as u vragagent te kies, sal die verkoopspan, wat die operasionele en bemarkingslede insluit, alle behoeftes van u as kliënt dokumenteer en dit as basis gebruik om mededingende pryse asook goedgeunstige roetes vir u vrag te bepaal.

LTG kan dus as u betroubare vennoot in die voorsieningsketting van u besigheid gesien word, hetsy u 'n plaas bestuur of

implemente en toebehore voorsien aan die landbou bedryf.

LTG is 'n goed gevestigde, standvastige en dinamiese ondernemng van 'n gesonde finansiële aansien met lojale, eerlike en passievolle werknemers.

Invoere van reg oor die wêreld word georganiseer, hetsy seevrag, lugvrag of abnormale vrag en as lid van die WCA (World Cargo Alliance), het LTG oor die jare respekvolle en betroubare agente opgebou in elke hoekie van die wêreld.

Kliente soos Agri Afrika (Silo Quipt) gebruik LTG as vragagent invoerder vir 'n geruime tyd en LTG is trots om hulle as kliënt oor die afgelope paar jaar te dien.

Kontak LTG dus gerus vandag nog indien u 'n besending uit die buiteland of lokaal aangekoop het en laat ons die wiele aan die rol kry!

**LTG LOGISTICS  
TRANSPORT GLOBALLY (PTY) LTD**





**2019 DEMO Ford Ranger 2.2TDCI Super Cab MT 4x2**

**WAS R389 000 NOW R269 900 (Only 4 Left)**

**SMS AGRI to 48702 and we will contact you.**

Terms and conditions apply. Offers only valid while dealer stock last. Please note pictures are for illustrative purposes only but the model derivative and offer are consistent. The colour shown on advertised models will not necessarily be available as stock are limited. All rates and payments on offers advertised are subject to customer credit approval by the bank and cannot be guaranteed to customers. All transaction fees excluded. Vehicle on the road costs excluded. Price subject to change without prior notice. E&OE

** MENLYN FORD 012 368 8000**

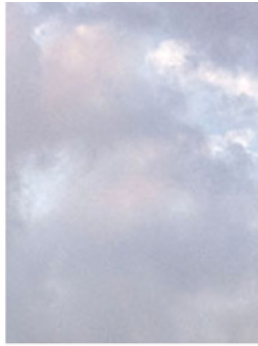
**CNR GLEN MANOR & FRIKKIE DE BEER, MENLYN, PTA**

**[www.bbmenlynford.co.za](http://www.bbmenlynford.co.za) | FSP: 49995**



Proudly part of the **MOTORGROUP**





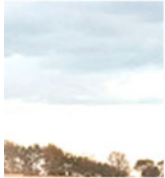
**TOYOTA**

**Pat Hinde Toyota Springs**

Ivan van de Schyff  
+27 (0)11 812 1030  
+27 (0)82 800 0195

# BEST DEALS ON ALL HILUX & FORTUNERS

We deliver nation wide!



**CONTACT US  
NOW!**



[WWW.PATHINDETOYOTASPRINGS.CO.ZA](http://WWW.PATHINDETOYOTASPRINGS.CO.ZA)

SCAN ME



125 2nd Street, Springs, South Africa



# *Ontgin die natuur se potensiaal met volhoubare landbou praktyke*

Nulandis® 'n Afdeling van AECl Beperk

Tel: (+27 11) 823 8000

AECl Chem Park, Berggrivier Rylaan 200, Chloorkop, Kempton Park, 1619

Posbus 14418, Witfield, 1467, Gauteng, Suid-Afrika



[info@nulandis.com](mailto:info@nulandis.com) | [www.nulandis.com](http://www.nulandis.com) 

 **NULANDIS**<sup>®</sup>  
unlocking nature's potential

A business of  
 **AECl**  
Plant & Animal  
Health

 **NuWay**<sup>®</sup>

# NULANDIS

## THE COMPANY AT A GLANCE

NULANDIS IS A SOUTH AFRICAN COMPANY WITHIN THE AECI GROUP OF COMPANIES SERVING THE AGRICULTURAL SECTOR WITH PRIDE. NULANDIS HAS LONG BEEN AN ALLY TO FARMERS IN AFRICA. WITH THE MOVE TOWARDS SUSTAINABLE AGRICULTURE, NULANDIS WITH ITS NuWay® PROGRAMME AND ITS EXTENSIVE RANGE OF PRODUCTS AND SERVICES, AIMS TO WORK WITH FARMERS TO PRESERVE OUR NATURAL RESOURCES, RESTORE SOIL BIOLOGY AND ADDRESS THE NEED FOR PRODUCING NUTRITIOUS FOOD.

NULANDIS IS A MULTI-FACETED COMPANY ADDRESSING ALL ASPECTS OF SOUTH AFRICAN AGRICULTURE COUNTRYWIDE THROUGH OUR NETWORK OF KNOWLEDGEABLE AND EXPERIENCED CROP ADVISORS AND TECHNICAL ADVISORS.

### CROP PROTECTION

Nulandis is a producer and distributor of a large range of crop protection products including fungicides, insecticides, herbicides, adjuvants and nutritional products.

### BIOCULT

Biocult is a wholly owned company within Nulandis that produces *Mycorrhiza* and *Trichoderma* products for seed treatment and soil application.

### NuWay®

Agriculture worldwide is under pressure to reduce pesticide and fertilizer usage whilst increasing crop yields to feed a growing world population. There is now a move away from the total reliance on traditional chemicals and synthetic fertilizers towards a more responsible and sustainable approach of cultivating crops that protects the environment and its precious resources.

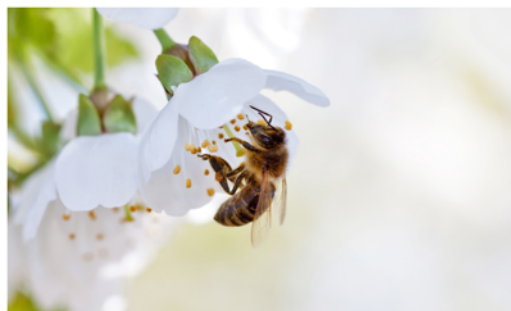
The Nulandis approach is to work hand in hand with the farmer to systematically address each point of influence in the growing of crops in a sustainable and responsible manner. Many of the tools and techniques simply unlock nature's potential and the genetic potential of the crop.



NuWay® is Nulandis' response to addressing the challenges facing conventional agricultural practices and meeting the demands of a more informed consumer seeking supply chain transparency and improved health benefits from the food consumed.

### NULANDIS PRECISION SCIENCES (NPS)

Nulandis Precision Sciences (NPS) is made up of a team of professionals for whom the principles of sustainability and profitability for the farmer are of the utmost importance. The team comprises soil surveyors and scientists, agronomists and technical advisors who can both advise farmers of their



operations' true potential and identify constraints. The team follows the Nulandis NuWay® approach, focusing on soil and plant-health and is also regarded as a leader in the delivery of feasibility studies for Agriparks in Africa.

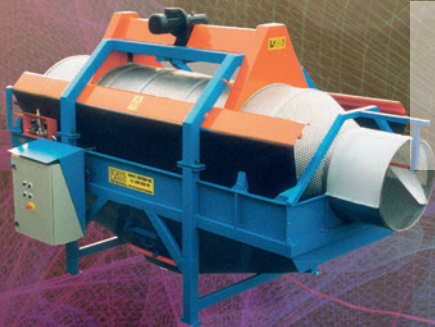
Nulandis Precision Sciences helps unlock a farming operations' full potential through the use of precision agricultural services to identify the most suitable soil for crop production and plan other operations around this. On existing farms, NPS first determines the cause of a particular problem and then implements a solution specifically to address it. Solutions may include a crop rotation strategy, pest and weed control, moisture management, soil biology and fertiliser correction recommendations. Through the correct implementation of these solutions, NPS can help the grower achieve optimum yields and be more profitable on a sustainable basis.

Global Imaging Satellite (GIS) specialists at NPS have the technology and software to capture, compare and multi-layer all farming inputs and outputs, precision and yield data. Furthermore, they utilise Normalised Difference Vegetation Index (NDVI) images to assist the farmer in making crucial decisions throughout the growing season.

**TOGETHER THE PRODUCTS AND EXPERTISE WITHIN NULANDIS OFFER THE FARMER THE COMPLETE SOLUTION**

# Packhouse automation made easy!

**WASHING, GRADING, WEIGHING AND BAGGING SOLUTIONS**



**Drum Washer  
for Potatoes  
and Carrots**



**C-PACK  
HCL 912 Knitted  
Net Bags**



**All Purpose  
Infeed Elevator**

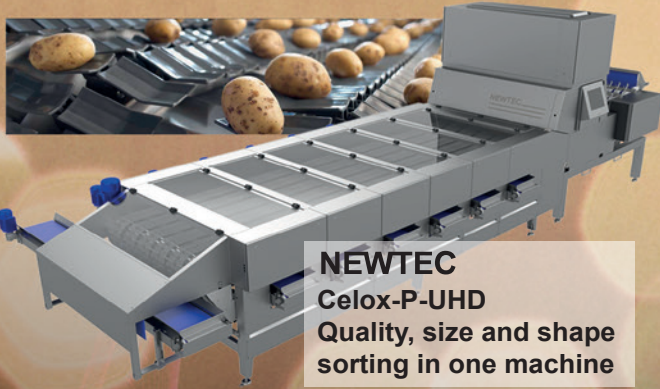


**Storage and  
feeding hoppers**



**Sleeves fresh produce  
in cardboard trays.  
100% Recyclable.**





**NEWTEC**  
**Celox-P-UHD**  
 Quality, size and shape  
 sorting in one machine



**NEWTEC**  
 Accurate  
 automatic  
 portion  
 weighers



**EMVE**  
 BE 6000  
 Paper Bagger



**JASA**  
 350CM  
 VFFS Bagger-Poly/ PP Bags  
 and Poly/ Net Combo Bags



**DAUMAR**  
 CB 148 Net/  
 Film Combo Bags



**GILLENKIRCH**  
 Bagger PP/ Poly Bags and  
 Poly/ Net Combo Bags



**GOLDPACK**  
 PACKAGING & PROCESS AUTOMATION

CAPE TOWN Tel: 021-534 0215  
 DURBAN Tel: 031-569 4199  
 JOHANNESBURG Tel: 011-312 4976  
**sales@goldpack.co.za**  
**www.goldpack.co.za**



All our 18V LXT models use the same battery platform



**CORDLESS RECIPRO SAW**  
DJR183Z



**CORDLESS CHAIN SAW**  
DUC254Z



**CORDLESS CHAIN SAW**  
DUC122Z



**CORDLESS GRASS SHEAR**  
DUM604Z



**CORDLESS GRASS TRIMMER**  
DUR187LZ



**CORDLESS STRING TRIMMER**  
DUR181Z



**CORDLESS HEDGE TRIMMER**  
DUH523Z



**CORDLESS HEDGE TRIMMER**  
DUH602Z

All Trimmers and Brush cutters are supplied with the standard nylon cutting head. (Blade not included)



**CORDLESS BLOWER**  
DUB183Z



**WHEEL BARROW**  
DCU180Z



**3.0Ah BATTERY**  
BL1830B  
Charge time:  
**22 min!**



**1.5Ah BATTERY**  
BL1815N  
Charge time:  
**15 min!**



**18V Intelligent Charger and**

Excludes HP347 & HP457

\*Charge time from cold



**FAST CHARGER**  
DC18RC

**EASE of use • ZERO**



a member of the **Hudaco** group

For more info. or your nearest Makita dealer contact Rutherford  
JHB: 011 878-2600 • CT: 021 932-0568 • DBN: 031 717-64

# CORDLESS INNOVATION

## Outdoor Power Equipment

18V Cordless Tools provide a cleaner, greener alternative to the traditional petrol options.



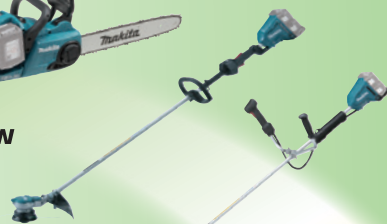
**CORDLESS CHAIN SAW**  
DUC3256Z



**CORDLESS CHAIN SAW**  
DUC302Z



**CORDLESS CHAIN SAW**  
DUC400Z



**CORDLESS GRASS TRIMMER**  
DUR364LZ



**CORDLESS PRUNING SHEAR**  
DUR362



**5.0Ah BATTERY**  
BL1850B  
Charge time:  
**45 min!**



**6.0Ah BATTERY**  
BL1860B  
Charge time:  
**55 min!**



**18v + 18v → 36v**

**CORDLESS SPLIT SHAFT MULTI TOOL**  
DUX60

WITH  
OPTIONAL  
EXTRAS

### Batteries fit all 18V Tools

white/black battery models

- Charges all batteries



**TWO PORT MULTI FAST CHARGER**  
DC18RD



Charge times are longer when using the DC18SE



**LAWN MOWER**  
DLM461Z

**LAWN MOWER**  
DLM380DZ

**CORDLESS BLOWER**  
DUB362Z

**CORDLESS BLOWER**  
DUB361Z



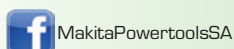
Petrol models



**CORDLESS HEDGE TRIMMER**  
DUH651Z

**Emissions • LOW Noise**

Batteries and chargers sold separately



[www.makita.co.za](http://www.makita.co.za)

**SO MUCH IS OUT OF YOUR CONTROL, YOUR PROFIT SHOULDN'T BE.**

# **TAKE CONTROL**

**PROTECT YOUR PROFIT. DEFEND GRAIN QUALITY. SPEED THROUGH HARVEST.**



STORAGE + CONDITIONING + MATERIAL HANDLING + STRUCTURES



T: +27 011 794 4455  
E: [sales@gsiafrica.co.za](mailto:sales@gsiafrica.co.za)

[GSIAFRICA.CO.ZA](http://GSIAFRICA.CO.ZA)





## PLANNING A FARM SYSTEM

The demands of farming are never ending. The risks are high. You need grain system solutions that maximize productivity and minimize downtime. We, GSI are driven to provide top-of-the-line products that will protect, condition and move the grain you work so hard to produce.

When planning an on-farm grain storage system, one of the most important steps is taking into account the location, accessibility and future expansion. You should always assume there will be growth in yield and capacity and that means that having a well-thought out plan that factors in growth and future technology changes is key. When choosing a location for your farm system, access to easy travel routes is essential. In an ideal situation, your system would be located right off a state highway, with access to diesel and three phase power and still in close proximity to your fields.

A highway will allow you to haul grain year-round without any road restrictions. If there isn't a highway nearby, it is not a deal breaker; just know that more road restrictions can occur, hindering your ability to haul grain. Three phase power is ideal because it allows you to operate much larger machines and motors. For smaller farm systems, single phase might work, but understand that as your farm system gets bigger, you will need more power and single-phase power might not be strong enough to supply it.

Having a farm system near your field will reduce transportation time and fuel cost. Ultimately, it can lead to a cut in number of trucks you need.

When planning a farm system, you should assume that there will be growth in yield and capacity; always plan on expanding, and leave space for additional bins.

When your capacity increases, plan on adding a higher capacity dryer or more in the future.

Do not assume that your wet holding capacity will always be adequate. Once you start drying more grain, an increase in your wet bushel storage capacity will be a necessity. Create a traffic pattern for separate dumping and loading stations to

increase efficiency. Being able to load and unload grain simultaneously will decrease your total harvest time, thus saving you money.

The different types of grain you plan on storing will determine the number of bins you'll need. If you are storing three types of grain, even though the grain sizes will vary, you will still need at least three bins. If you want to limit risk, do not put all of your grain in one tank. For example, if you have 5000mt of maize, don't put it all in one bin. Instead, invest in two or three smaller bins. If some of the maize spoils you will only lose a fraction of your harvest as opposed to all of it.

A proper Drying system is a must. Choosing a system that can provide high quality grain at harvest capacity and allows harvest in a reasonable time is more important than ever. A dryer is the critical component in securing the correct moisture content for storage.

Choose the drying system to match your farms needs. Future expansion of both drying, cleaning and wet storage must be a part of the initial design.

Remember, drying to the proper moisture is key to safe storage. Storage life is affected by grain temperature but grain moisture is still the primary determinant for storage life. With maize, 15% grain moisture is ideal to store until June, 14% to next fall, and 13% for longer storage.

A storage system is of little value if proper sanitation and loading practices are not followed. Make sure you know your rate of return. There are specialized ROI (Return on Investment) tools to help you and your banker understand what income will be from storing and drying grain. The location of your farm system plays a factor in determining your ROI, i.e. access to diesel and availability of hard roads can improve your return rate.

When building your farm system, always make sure you have a well thought out plan anticipating growth and future technology changes. A poor designed farm system can be as harmful as not having one at all.

**CONTACT GSI SOUTH AFRICA FOR MORE INFORMATION:  
WWW.GSIAFRICA.CO.ZA | SALES@GSIAFRICA.CO.ZA**



EXCLUSIVE BRANDED CLOTHING  
**OIL SKIN CAP LAND CRUISER BROWN**



[www.N14x4.co.za](http://www.N14x4.co.za)



t. +27 12 545 0200 e. [info@n14x4.co.za](mailto:info@n14x4.co.za) w. [www.N14x4.co.za](http://www.N14x4.co.za)



# KUILVOER

## SILAGE, GOOD FOR YOUR GAME!



**VOORWAARTS GAME BREEDERS** are committed to the conservation of all species, as well as the selective breeding of top quality scarce game. **Passion** for the industry and its partners, great teamwork & **100% commitment**, forms part of our DNA here at **VOORWAARTS**.

[www.voorwaartsgame.co.za](http://www.voorwaartsgame.co.za)

We are also the **SUPPLIER & DEALER** for **AGRONIC Multi-balers**:

Silage made with **AGRONIC Multi-balers** can be used with great success to feed **Buffalo, Sables, Wildebeest** and many other **plains game** species.



Full grain  
**MAIZE SILAGE**  
currently for sale  
at R1400/ton



**AGRONIC 1220 MultiBaler** produces a **BALE** with spec's:

- Size:  $\pm 1\text{m}^3$
- Weight: 750 - 1000kg depending on material & moisture
- Diameter: 1 - 1.2m & 1m wide

**AGRONIC 820 MultiBaler** produces a **BALE** with spec's:

- Size:  $\pm 0.5\text{m}^3$
- Weight: 300 - 400kg depending on material & moisture
- Diameter: 80 - 90cm & 85cm wide

**PRODUCTION:** up to 40 bales / hour for both machines

**S**AXENI AGRIC, as dealers of **AGRONIC MultiBalers** (Models 1220 & 820) now offer these magnificent machines that can ensile forage (maize, lucerne, wheat, oats, livestock feed or even wooden chips, etc.) in chopped or processed form, in wrapped bales, ready for use and easy to transport.

The quickest oxygen removal rate of any ensiling process ensures highest quality. ▶ 1 Year Warranty on machines & spares.

*We can also produce & wrap-bale your SILAGE for you, on your farm!*

**Emje Ferreira** (Technical Info)  
c: 082 908 5004  
e: [emje@saxeni.co.za](mailto:emje@saxeni.co.za)

**Flip Hennop** (Director)  
c: 071 607 7929  
e: [flip@saxeni.co.za](mailto:flip@saxeni.co.za)

   [www.saxeniagric.co.za](http://www.saxeniagric.co.za)

**SAXENI**  
**AGRIC**  
AGRONIC MultiBalers

We are also **DEALERS** of **HYUNDAI FORKLIFTS, SANY CRANES & FUEL TANKS** please visit [www.saxeni.co.za](http://www.saxeni.co.za) for more information:

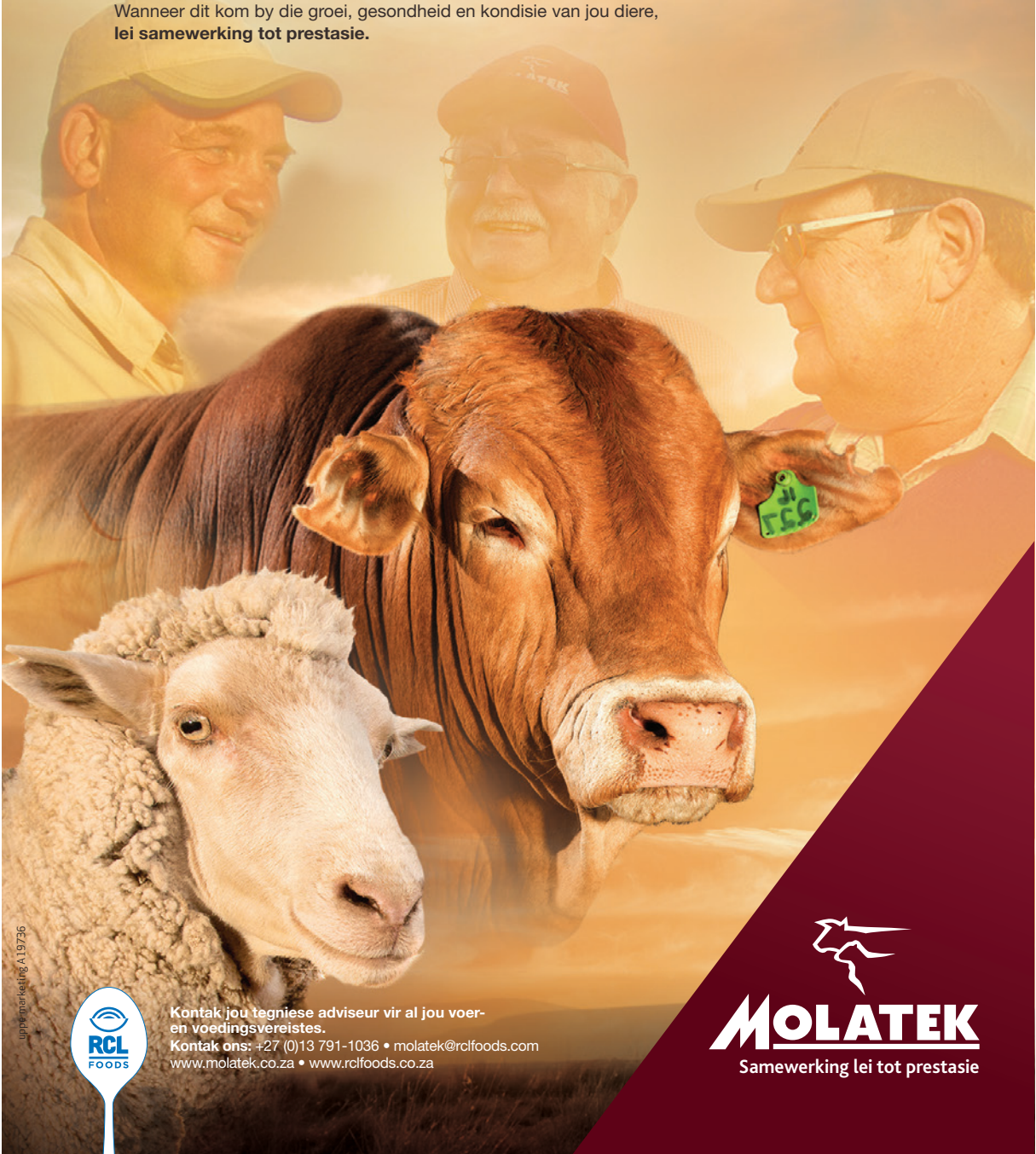


# PRESTASIE IS AAN DIE ORDE VAN DIE DAG SAMEWERKING MAAK DIT MOONTLIK.



Die keuses wat jy maak het 'n invloed op die prestasie van jou diere en uiteindelik die sukses van jou onderneming. MOLATEK is soveel meer as wetenskaplik geformuleerde veevoer. MOLATEK is deel van jou wêreld. Ons kundigheid gee ons die voorsprong sodat jy met selfvertroue op ons nommer kan druk.

Wanneer dit kom by die groei, gesondheid en kondisie van jou diere, lei samewerking tot prestasie.



oppasmerking A19736



Kontak jou tegniese adviseur vir al jou voer-  
en voedingsvereistes.  
Kontak ons: +27 (0)13 791-1036 • molatek@rclfoods.com  
www.molatek.co.za • www.rclfoods.co.za

Samewerking lei tot prestasie



**Franco-C**  
**SADDLERY**

Est. 1996

- Koop een keer
- Koop kwaliteit
- Koop plaaslik



- Opvolgdiens
- Ten volle herstelbaar
- Vevaardig in Suid-Afrika

Franco C Saddlery  
info@franco-c.com  
www.franco-c.com  
+27 (0) 33 263 1737  
+27 (0) 84 514 7667

SCAN ME



© MES CON SA

**PLASSON**<sup>®</sup>

Livestock



Feeding



Drinking

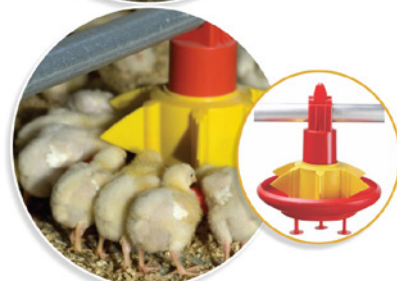


Climate



Housing

**SUPPLY AND SERVICING OF FEEDING,  
DRINKING AND CLIMATE CONTROL  
EQUIPMENT FOR ALL POULTRY  
PRODUCTION OPERATIONS**



**POULTRY & LIVESTOCK FARMING  
EQUIPMENT SUPPLIERS**

- Automatic Feeders
- Nipple and Bell Drinkers
- Layer Cages
- Egg grading and Packaging Machines
- Breeder Nests
- Skov Systems and Spares
- Wetwalls and Cooling
- Bulk Feed Silos and Cross Auger Systems
- Heating Systems and Ventilation Fans

sales@plasson.co.za  
+27 (0) 11 708 3094 | +27 (0) 76 542 7070



**WWW.PLASSON.CO.ZA**



# OLI VIBRATORS

## EFFICIENT DISCHARGE SOLUTION

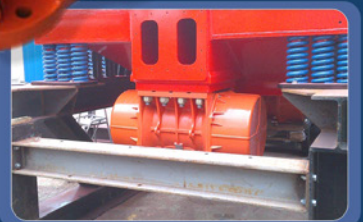
# DESIGNED FOR AGRICULTURE

OLI OFFERS TECHNICAL ADVICE WITH PRODUCT SIZING

- PRODUCT FLOW AID'S: HOPPERS, BINS, SILO'S & CHUTES
- VIBRATING SCREEN APPLICATIONS

### OLI'S PRODUCT RANGE INCLUDES:

- Electric motor vibrators
- Pneumatic linear & rotary vibrators
- Aerators
- Hydraulic vibrators
- Pneumatic hammers



**OLI South Africa (Pty) Ltd**

+27 (0) 11 39\*2 1054 | Peet Eksteen: +27 (0) 60 564 5560

Sales & Enquiries: [sales.southafrica@olivibra.com](mailto:sales.southafrica@olivibra.com)

[www.olivibra.com](http://www.olivibra.com)



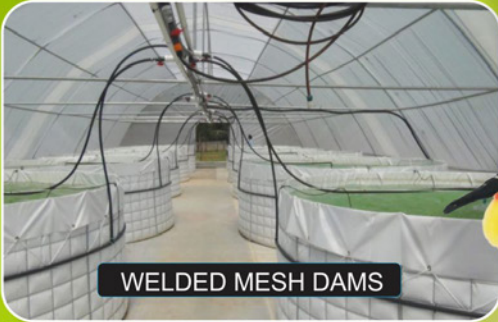


# TATA MA TARPS & LININGS

©MES CON SA



EARTH DAM LININGS



WELDED MESH DAMS



TRUCK TARPS



RESERVOIR  
LININGS & COVERS



FRUIT PICKING BAGS

**LEADING AND INNOVATIVE  
MANUFACTURER OF REINFORCED  
PVC TARPAULIN PRODUCTS,  
SPECIALIZING IN EARTH DAM  
LININGS, RESERVOIR LININGS,  
MESH RESERVOIRS, TRUCK TARPS  
AND OTHER ALLIED PVC PRODUCTS**

We currently supply the agricultural, mining, transport and domestic sectors of the South African market, its neighboring states and the greater SADC region.

Due to our extensive recycling program, we offer both recycled and virgin materials making us the most eco friendly and cost effective tarp and liner manufacturer on the African continent.

+27 (0) 78 834 4320 | +27 (0) 72 279 3294  
robynne@tatamatarps.co.za | www.tatamatarps.co.za

SCAN ME



# Uniformity Matters...



Predictable uniformity  
adds value to your business

- Consistent product weight ranges
- Best uniform broilers
- Greater yield value
- More 1<sup>st</sup> class meat
- Increased profits



**Theo Bezuidenhout**

Technical and Sales Executive

Tel: +27 (0)83 257 3025

E-mail: [theo.bezuidenhout@rdffoods.com](mailto:theo.bezuidenhout@rdffoods.com)

[www.cobbsa.co.za](http://www.cobbsa.co.za)



**ONE FAMILY.  
ONE PURPOSE.**



# Piket

## Implemente

tel: +27(0)22 913 2435  
e-pos: info@piket.co.za  
web: www.piket.co.za

3-RY

4-RY

2-RY

## EKONOMIESE NO TILL MIELIEPLANTER

- ❖ **Modelle:** 1-Ry / 2-Ry / 3-Ry / 4-Ry / 5-Ry / 6-Ry
- ❖ Drie saadkiste vir aanwending van fynsaad, saad & kunsmis
- ❖ **Gebruik:** Plant van mielies, bone & klein graansoorte
- ❖ 3-punt optrek (**Opsioneel:** Sleepmodel met wiele)



EKONOMIES



GEBRUIK: PLANT VAN  
MIELIES, BONE & KLEIN  
GRAANSOORTE

6-RY

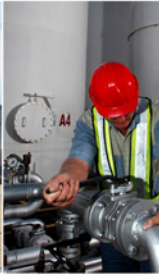
6-RY

(Opsioneel:  
Sleepmodel met wiele)

Kontak ons vir meer inligting by tel: +27(0)22 913 2435 en/of  
stuur 'n e-pos aan: info@piket.co.za of besoek: www.piket.co.za



[www.autocommodities.co.za](http://www.autocommodities.co.za)



**BUSINESSES AND FUNCTIONS**

**AUTO COMMODITIES HOLDINGS**

**FUEL**

- Import & Storage
- Wholesale & Distribution

**LOGISTICS**

- Road Transport
- Rail Transport
- Inland Warehousing & Material Handling
- Portside Warehousing & Material Handling

**ADDITIONAL SERVICE OFFERINGS**

- Tank and meter finance through Tankfin
- Debtor finance and terms for agri clients through Afgri and Grocapital
- Finance & Assets
- Alternative burning fuels through The Energy Company
- Bulk commodity handling and supply chain management through Metal Line Projects
- Alternative transport through Rail and Pipeline as well as storage and handling solutions through Phodilogistics

**WE HAVE DEPOTS IN:**

**KRUGERSDORP | KIMBERLEY | KURUMAN | CAROLINA**



Call: +27 (0) 11 955 4571  
[andre@autocommodities.co.za](mailto:andre@autocommodities.co.za) | [info@autocommodities.co.za](mailto:info@autocommodities.co.za)



SCAN ME

# TILL MASTER

Office: +27 (0) 33 394 4543  
Fax: +27 (0) 33 394 2278

216 Victoria Road, Pietermaritzburg

**MANUFACTURERS &  
SUPPLIERS OF QUALITY  
AGRICULTURAL  
MACHINERY**



SCAN ME



[www.tillmaster.co.za](http://www.tillmaster.co.za)



VISIT OUR WEBSITE FOR MORE PRODUCTS...

ERLO DREWS: +27 (0) 83 320 0698

©MES CON SA



Pro Plastic  
Lichtenburg, Noordwes

**ALLE PRODUKTE VAN DIE HOOGSTE GEHALTE  
LLDPS UV GESTABILISEERDE PLASTIEK VERVAARDIG**  
NAATLOOS, STRESSVRY, HOË IMPAK BESTAND



+27 (0) 79 471 3324 • +27 (0) 18 011 1148 • [dutoitsp@truenw.co.za](mailto:dutoitsp@truenw.co.za)



**STAALBOER**



**5KL/10KL TANK STANDS  
RANGING FROM 1.5M  
UP TO 12M**



**VOLUME RANGING FROM  
15KL UP TO 4000KL**



**HEIGHTS FROM  
1.3M UP TO 4.9M**

## **COST EFFECTIVE**

These cost-effective reservoirs are easy to transport by a long wheelbase bakkie, which makes it easy to ship anywhere in the world.

**ORDER  
TODAY!**

## **10 YEAR WARRANTY**

Staalboer aims to give you some peace of mind by providing a 10 year warranty on its products against faulty material and/or workmanship.

## **BETTER WIND RESISTANCE**

**OUR EXPERT TEAMS ARE AVAILABLE TO DO ERECTIONS  
COUNTRY WIDE AND CROSS BORDER**



Plot 798 Hoefyster Crescent, Kameeldrift East,  
Pretoria, 0035



jan@staalboer.co.za



+27 (0)82 210 0999

For more info  
**Please Scan  
QR Code !**



**SCAN ME**

# SUPERIOR WORKMANSHIP AND CUSTOMER CARE

Staalboer is a Proudly South African company manufacturing steel panel reservoirs with capacities ranging from 15 000l to 4 000 000l and heights ranging from 1,3m to 4,9m.

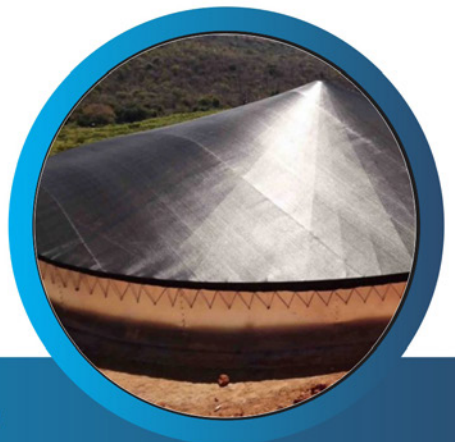
The structures are fully galvanized and have a life expectancy in excess of 20 years. Our dams are made from flat steel panels with stiffening rings at the top and bottom and in between as necessary. They have a more pleasing appearance and much better wind resistance than corrugated dams. These cost-effective reservoirs are easy to transport by a long wheelbase bakkie, and can be shipped anywhere in the world. The dams can be erected in minimal time by unskilled labour using only basic hand tools and they don't require a concrete floor. However, Staalboer can do the erection for you.

The liquid is contained by a polyester net-reinforced PVC liner with seams made by a high frequency welding process to provide watertight joints. The liner is suitable for potable water and a wide range of chemicals and liquid fertilizer. It carries a 10-year pro-rata warranty against sun damage.

They can be used in a broad spectrum of industry sectors including agriculture, aqua culture, mining, construction, general industry, fire tanks, domestic use, rainwater harvesting and swimming pools.

Our products include:

- Galvanised steel water tanks
- Water tank stands
- Standard water tank stand
- Guard towers
- Stand with gangladder & platform



[www.staalboer.co.za](http://www.staalboer.co.za) | Liz: +27 (0) 82 210 0999

# WHERE WILL YOUR TRACKS TAKE YOU?

## RECOVERY GEAR KIT

- 1 x 9 m 11kg Snatch Strap
- 1 x 3 m 10 kg Tree Trunk Protector
- 1 x 20 m 10 kg winch extension strap
- 1 x 10 kg Pulley Block
- 2 x 4.75T W.L.L Bow Shackles
- 1 x Leather/synthetic work gloves
- 1 x Recovery Damper Blanket
- Heavy duty carry bag
- 3 year warranty (material & manufacture)



## FOR MOST 4X4 VEHICLES

**Over 180**  
 authorised fitment  
 centres and stockists  
 countrywide!

The Foam Cell Technology found in our 41mm, 40mm adjustable, and our 45mm big bore adjustable shocks is the key to ensuring Tough Dog shocks will go the distance so you can make your tracks with confidence.

SUSPENSION • SPOTLIGHTS: LED-HALOGEN-HID • BULL BARS • RECOVERY GEAR • CHARGING SYSTEMS

**NEW RANGE!**

## Bellows Air Springs & Coil Insert Bag Kits



- Available for leaf & coil spring vehicles
- Heavy duty rubber construction with crimped nylon end caps
- 5-100psi capacity (application dependent)



- Laser cut & powdercoated brackets
- Zinc plated roll plates top & bottom
- No drill fitting (most applications)
- Eliminates sway & body roll
- Guards against excessive spring compression



**H/D Rubber**



**No Drill Fitting**  
 (most applications)



**5-100 psi**  
 (most applications)



**Suits Towing**



**Suits Heavy Load**



**opposite lock**  
 4WD & Vehicle Accessories

FOR MORE INFO AND STORE ENQUIRIES  
 011 697 0001 | [www.oppositelock.co.za](http://www.oppositelock.co.za) | [info@oppositelock.co.za](mailto:info@oppositelock.co.za)

# Agricultural Shade Net



  
**PlusNet**

A division of Master Plastics Group

Tel: 011 412 3954

We manufacture and supply a comprehensive range of agricultural shade netting from 20% to 80% shade, tailored to improve spectral transmittance and provide the optimal lighting and protection for your crop. Our range of attractive and functional decorative shade net provide cover for your crops for up to 90% shade and come in a variety of natural colours.

## 10 year warranty

At PlusNet, each roll of shade net carries a 10 year WARRANTY against sun degradation.



For more information, please visit [www.plusnetgeotex.co.za](http://www.plusnetgeotex.co.za) or email us at [nets@plusnet.co.za](mailto:nets@plusnet.co.za)





# PLUSNET

**SETTING THE STANDARD IN THE SHADE NET INDUSTRY IN AFRICA**

PlusNet/Geotex A Division of Masters Plastics PTY Ltd, is a Gauteng based manufacturing company. Geotex was founded in 1995 and the PlusNet Range was added in 2000. Today PlusNet/Geotex has a fully integrated state-of-the-art production facility that produces innovated products for the agricultural, commercial and civil industry.

Innovation is an important philosophy to which PlusNet/Geotex subscribes, thus new developments are constantly in the pipeline.

PlusNet/Geotex has achieved high levels of business with its well proven reputation for quality and service and maintains the ISO 9001:2015 quality standard. This ISO 9001 quality management system will always be endorsed, now and in the future.

## **Agricultural and Decorative Net**

PlusNet has a comprehensive range of agricultural shade netting from 20% to 80% shade, tailored to improve spectral transmittance and provide the optimal lighting and protection for your crop. Their range of attractive and functional decorative shade cloths provide cover up to 90% shade and come in a range of colours.

## **Business**

As the leading manufacturer of agricultural shade net, the PlusNet shade net product line will open up a spectrum of new and evolving opportunities for new product variants. Whether you provide shade net for vegetable tunnels, shade houses or creative 'green'

initiatives, the wide range of PlusNet netting offers the client great opportunities at the best possible price.

## **Mini Net Tunnels**

Mini Tunnels are the quickest hassle-free infrastructure available when endeavouring to open a micro agricultural business. Net tunnels are the ideal portable, affordable do-it-yourself infrastructure for instant shade for your livestock or small gardening business. Shade tunnels come in various sizes and are simple to assemble.

## **PlusNets' Promise**

PlusNet is more than just a shade net manufacturing company. We offer a wide range of functional netting to protect what is important to you. If we don't have what you need in stock, we shall schedule your order and make it up for you!



**THE PLUSNET TEAM IS READY TO ASSIST YOU WITH YOUR NET-RELATED QUERIES OR PROJECTS**

**For more information on the products, visit [www.plusnetgeotex.co.za](http://www.plusnetgeotex.co.za) or contact us on +27 (0) 11 412 3954 or email [nets@plusnet.co.za](mailto:nets@plusnet.co.za) for a quote today.**

# POWER PRODUCTS



- 0.37 kW 30m cable **R2 450** incl Vat
- 0.55 kW 40m cable **R2 760** incl Vat
- 0.75 kW 50m cable **R3 199** incl Vat
- 1.1 kW 60m cable **R4 270** incl Vat

## Bore Hole Pumps

with Cable and control box

## Solar Bore Hole Pumps

Kit 1 - 1x solar panel  
50m cable digital control box **R7 799** incl Vat

Kit 2 - 4x solar panels  
80m cable digital control box **R12 995** incl Vat

Kit 3 - 9x solar panels  
65m cable digital control box **R24 500** incl Vat



## Water Pumps



Chemical Pumps **R4 150** incl Vat

2" High Pressure Petrol Pump **R3 795** incl Vat

Trash Pumps **R4 280** incl Vat

3" High Pressure Diesel Pump (8 Bar) Suitable for irrigation **R9 385** incl Vat

Automatic Pressure Controller **R 400** incl Vat



Jet Booster Pump 0.75kw of 1.1kw from **R1 495** incl Vat



Stainless Steel Pump **R1 590** incl Vat



## Lawnmower Engines



- 150HP **R7 795** electric start incl Vat
- V220 **R13 065** electric start incl Vat
- V65 **R2 270** recoil start incl Vat
- V85 **R2 550** recoil start

## High Pressure Washer



Petrol Engine 16hp 4000 PSI **R14 720** incl Vat

## Petrol & Diesel Generators



6.5 kva Diesel 3 Phase Electric Start **R17 500** incl Vat

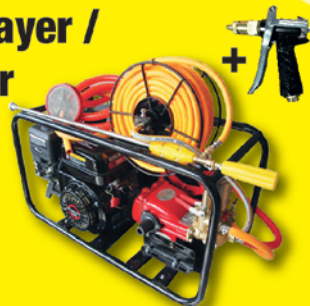
12 kva Diesel with ATS and Electric Start Single Phase **R59 500** incl Vat

2.8kva petrol **R4 150** incl Vat

6.5kva petrol Electric Start **R9 500** incl Vat

8 kva Diesel with ATS and Electric Start **R23 500** incl Vat

## Power Sprayer / Fire Fighter



Accessories include:  
1 x Hose Reel,  
1 x Spray Lance,  
1 x Swivel Fitting,  
20 metres High Pressure Hose,  
Suction & Return hose

**R4 999** incl Vat

**FREE HANDGUN TO THE VALUE OF R600 WITH EVERY POWER SPRAYER PURCHASED**

### SPECIAL DEAL

9HP recoil start 2:1 Reduction incl Vat. **R 3 000**

## Petrol & Diesel Engines

### Petrol

- 7HP recoil start **R1 895**
- 7HP electric **R2 695** incl Vat
- 7HP Reduction **R2 295** incl Vat
- 9HP **R3 650** incl Vat
- 13HP **R3 850** incl Vat
- 16HP recoil start **R4 050** incl Vat
- 16HP electric **R5 250** incl Vat

### Diesel

- 5HP **R4 795** incl Vat
- 6HP **R5 195** incl Vat
- 10HP recoil start **R6 250** incl Vat
- 10HP electric **R7 360** incl Vat
- 12HP electric **R8 575** incl Vat
- 20HP electric start **R27 850** incl Vat



Rammers Petrol & Diesel **R19 950** incl Vat

ARRIVING SOON

### Brushcutters

Top Quality 43cc **R1 999** incl Vat

### Chainsaws

43cc **R2 095** incl Vat

### Augers

52cc / 200mm Drill Bit Included **R2 999** incl Vat

### Diesel Cultivators

from **R14 750** incl Vat

### Compactors

from **R8 000** incl Vat



HIGH QUALITY • AFFORDABLE • DEPENDABLE

ALL PRICES ARE VAT INCLUSIVE FULL SPARES BACKUP & SUPPORT

011 422 6354 | 072 847 0978

95 Amphill Ave, BENONI

Pictures are for illustrative purposes only. Actual products may differ. E&OE.

## TOP QUALITY AT THE BEST RATES

**We will beat any written quotation!**

### DIY DAMS ALSO AVAILABLE | 10 YEAR WARRANTY

ZincAl tanks suitable for human consumption

Supplied with a certificate

4 x 2.3 m Zinc Tank (29 kl)	- R 19 500	8 x 2.3 m Zinc Tank (116 kl)	- R 49 200
6 x 2.3 m Zinc Tank (65 kl)	- R 33 100	15 x 2.3 m Zinc Tank (406 kl)	- R 156 900

#### PRICES INCLUDE:

Roof | ZincAl | Liner | 50 mm Outlet | 40 mm Overflow | Installation and VAT. Transport not included

ZincAl and grain dams

4 x 2.3 m Zinc dam (29 kl)	- R 14 300	8 x 2.3 m Zinc dam (116 kl)	- R 30 600
6 x 1.55 m Zinc dam (44 kl)	- R 16 900	12 x 2.3 m Zinc dam (261 kl)	- R 63 300
6 x 2.3 m Zinc dam (65 kl)	- R 22 200	14 x 2.3 m Zinc dam (354 kl)	- R 83 100

#### PRICES INCLUDE:

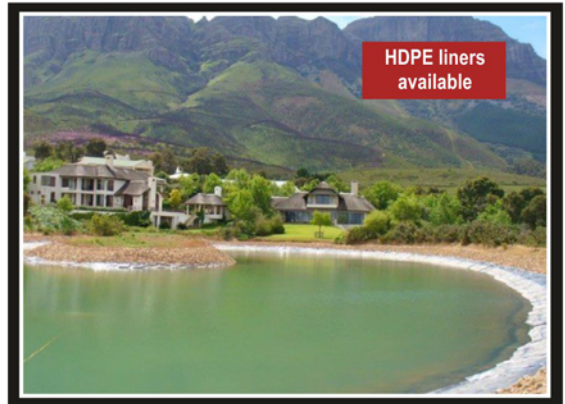
ZincAl | Lining | 50 mm Outlet | 40 mm overflow | Installation and VAT. Transport not included

### ZINCAL DAMS



Reservoirs  
up to 522 kl

### EARTH DAMS



HDPE liners  
available

Any size ZincAl dam, grain dam, ZincAl tank or lining can be manufactured on request. 0.8 to 1.2 mm ZincAl sheets with a life expectancy of 2 to 4 times longer than that of traditional sheets are used. 850 GSM PVC linings are manufactured with the aid of a high-frequency welding process. Linings are UV resistant. Material of the same thickness is used for the walls and the floor. Should the thickness differ, you get your lining **free**.

Jannie: +27 (0) 72 600 0179 | Boet: +27 (0) 82 496 1934 | Office: +27 (0) 76 307 7573  
Email: [sales@nwdamme.co.za](mailto:sales@nwdamme.co.za) | Website: [www.nwdamme.co.za](http://www.nwdamme.co.za)



SCAN ME



# ELECTROLEE



Easy to install

Tacho up to 4 axles

Alarm on each function

## Cut losses with **PRECISION** Plant with **VISION**

### Planter Monitor

- Seed per 100m per row, seed population
- Hectares worked and much more
- Easy to install and maintain
- Fertilizer and turning of axles
- Can be applied to most planters
- Real tough, rust and water resistant

**3 YEAR  
GUARANTEE**



### Process Monitor for Air Seeders

- Area
- Speed
- Tacho up to 4 axles
- Alarm on each function
- Easy to install
- Bin / Tank full
- Bin / Tank empty



# ELECTROLEE

**Tel: 012 345 3193**

Fax: 012 345 6763

Web: [www.electrolee.co.za](http://www.electrolee.co.za)

Email: [info@electrolee.co.za](mailto:info@electrolee.co.za)

Sales: [sales@electrolee.co.za](mailto:sales@electrolee.co.za)

Proudly Made  
in South Africa



# LTG`S INGREDIENTS TO SUCCESS

## WHAT SETS US APART FROM OTHER LOGISTICAL SERVICE PROVIDERS:

- LTG is part of the WCA network who has access to 7317 agent offices in 191 countries worldwide which enables LTG to choose the best agent to assist with shipments.
- LTG is ISO 9001:2015 certified which is internationally recognised. We have a state-of-the-art Business Management System (BMS) which means we are a professional and well-structured company.
- LTG is a Level 2 BBEE company, which enables our clients to claim 125% on their procurement spent with LTG.
- LTG is approachable and will assist with any special requests the client requires i.e. urgent meetings to discuss shipments which would require special attention.
- LTG offers a daily progress report which reflects the shipment details, estimated date of arrival and if there are any changes. This report is transparent and if changes occur throughout the day it will be communicated to the client if preferred.
- LTG offers a notification service to advise customers of possible port strikes, transport strikes and any other unplanned incidents which might affect shipments.
- LTG offers a personalised service where you get appointed your own shipment controller to be your point of contact. All operations managers are available during all times to assist where possible,
- LTG prides themselves on client service and appreciates any feedback, compliments, complaints and suggestions to keep us providing the best service we can,
- LTG strives not only to be your logistics provider but also to become your business partner and get to know your business,
- LTG is community orientated and is involved in various projects uplifting the community and assisting wherever needs may arise – this is evident on our Facebook page as well as our website,
- LTG strives to make every employee feel special and to be part of a wonderful team who we call the LTG family,
- LTG can offer our services to any market segment. We cover the Automotive, Mining, Engineering, Textile, Agricultural both feeds and equipment, Printing, Aviation, Steel, Electronics, Specialised Tooling and many more.



**TO LTG YOU ARE NOT JUST A NUMBER,  
YOU ARE A VALUED BUSINESS PARTNER!**



# Jou SENTER 360 is aanlyn...is jy?

**Senter**  
TECHNOLOGIES 360

## >>> JY VERTROU ONS REEDS OMDAT ONS...

- Die sterkste struktuur in die industrie het
- Die betroubaarste produk het
- Die beste sprinkelpakkette het



SCAN ME

[WWW.SENTER360.CO.ZA](http://WWW.SENTER360.CO.ZA)

Vir die beste diens kontak ons by:  
+27 (0) 18 469 1331 | +27 (0) 82 564 5955



'n Nuwe  
beheerstelsel  
met **omvattende  
selfoon-/internet-  
kommunikasie...**  
en dit is **standaard-  
toerusting\*\***

\*\*Terme en voorwaardes geld

# BY SENTER360 IS ONS TROTS DAAROP DAT ONS NIE SLEGS PRODUKTE VERKOOP NIE, MAAR DAT ONS OOK LANGTERMYN VERHOUDINGS MET ONS KLIËNTE BOU DEUR 'n WAARDEPAKKET VAN UITSTEKENDE KWALITEIT EN DIENS TE VERSKAF

Die SENTER360 spilpunt wat sedert 1994 in Suid-Afrika ontwerp en vervaardig word, is bekend vir sy uitmuntende kwaliteit en sterkte bo industrie-standaarde. Vir meer as vyf-en-twintig jaar is ons al deel van die besproeiingsbedryf. Ons het groeiende besigheidsbelange in Suid-Afrika, Afrika en die res van die wêreld.

By SENTER 360 is spilpunte vir ons 'n passie. Juis daarom bou ons nie net 'n sterk en taai struktuur nie, maar ons bestee ook heelwat tyd en aandag aan die klein besonderhede wat 'n groot verkil in jou alledaagse lewe kan maak.

## STRUKTURELE STABILITEIT

SENER360 se vakwerkysters is van pyp vervaardig wat ligter as die algemeen gebruikte hoekysters is. Dit bied ons die voordeel om twee stelle vakwerkysters meer per toring te gebruik wat sorg dat die struktuur buitengewoon sterk is.

Boonop het die pypstruktuur minder windweerstand en is dit die rede waarom SENTER360 spilpunte windsnelhede van 158 km per uur (in die veld gemeet) kan weerstaan sonder enige skade; weereens ook die rede waarom geen SENTER360 spilpunt in die onlangse stormwinde omgewaai het nie (die enigste fabrikaat wat bly staan het!). Standaard langer aandryfbalke, stewige toringstutte, stabiliseringstawe en diagonale dra by tot dié uitsonderlike standvastigheid.



## INNOVERENDE BEHEERPANEELREEKS

Die beginsel van eenvoudige modulêre ontwerp, wat die grondslag van die hele SENTER360 spilpuntontwerp uitmaak, word ook op ons beheerpaneelreeks toegepas.



As "basiese" beheerpaneel gebruik SENTER360 'n paneel vergelykbaar met die top reeks van ander fabrikate. Dit het as standaard funksies aan/af-sit terugvoer as die spilpunt staan direkte mm verstelling posisiebepaling druk-aanskakel en laedruk skakeling kan deelsirkels en sektore met variërende mm op elke sektor besproei outomatiese omdraai met variërende mm met die omdraai skeduleringsopsies, en vele meer!

Alle SENTER360 panele kan met jou selfoon\*, tablet\*, rekenaar of basisstasie beheer word deur 'n vandie-rak Kommunikasie-eenheid van jou keuse (GPRS/selfoon-netwerk, Wi-Fi of radio-eenheid) op enige nuwe of bestaande\*\* SENTER360 beheerpaneel in te prop.



Volle pompbeheer, VSD-beheer en terugvoer is ook beskikbaar op dieselfde stelsel.

\*(Android, IOS en ander)

\*\* (Ouer panele se beheer is beperk tot aan/af, mm verstelling, loop/staan terugrapportering)

## "LAASTE SPUIT" OPLOSSING

Een van die meer algemene probleme met spilpunte is dat die laaste spuit geneig is om verstopt te raak. Ons het egter met 'n innoverende, dog eenvoudige oplossing vorendag gekom om die laaste spuit deurlopend skoon te hou. SENTER360 spilpunte word standaard toegerus met drukgereguleerde Komet Twister sproeiers teen 10 psi (0.7 bar) of opsionele 6 psi (0.42 bar) wat op hangpype gemonteer is. Dit verseker uitstekende waterverspreiding in selfs die uiterste klimaatstoestande.

## SWAARDIENS RATKAS EN MOTORS

Die standaard aandrywing van die SENTER360 spilpunt bestaan uit 'n swaardiens wielratkas, met 'n gratis opsionele vyf jaar waarborg\* wat deur 'n 0.56 kW (40:1) motorratkaskombinasie aangedryf word (30:1 en ander is opsioneel).

Kontak ons gerus  
+27 (0) 18 469 1331  
+27 (0) 82 564 5955



# Piket

## Implemente

tel: +27(0)22 913 2435  
 e-pos: info@piket.co.za  
 web: www.piket.co.za

14-RY



10-RY



8-RY



### NO TILL DEKGEWAS FYNSAAD PLANTER

- Modelle: 6-Ry / 8-Ry / 10-Ry / 14-Ry / 16-Ry / 20-Ry
- 3-Kompartement saad, fynsaad & kunsmis kis
- Plant van weiding op suiwel & vee plase of dekgewas in wingerde & vrugteboorde

2-RY



4-RY



### EKONOMIESE NO TILL MIELIEPLANTER

- Modelle: 1-Ry / 2-Ry / 3-Ry / 4-Ry / 5-Ry / 6-Ry
- Drie saadkiste vir aanwending van fynsaad, saad & kunsmis
- Gebruik: Plant van mielies, bone & klein graansoorte
- 3-punt optrek
- Ekonomies

2.8 m



2.3 m



### FYNSAAD PLANTER

- Modelle: 1.8 m / 2.3 m / 2.8 m
- Plant op voorbereide lande
- Twee verstelbare saadkiste
- Terugtrekbare tande
- Windskerms
- Eweredige saad verspreiding

1.8 m



Kontak ons vir meer inligting by tel: +27(0)22 913 2435 of stuur 'n e-pos aan: info@piket.co.za of besoek: www.piket.co.za





FLASKS THAT STAY COOL WHEN IT'S HOT – AND VICE VERSA. BOTTLES DESIGNED USING SPACECRAFT TECHNOLOGY



**YOU'VE TRIED THE REST, NOW GET THE BEST!**

**THE ORIGINAL ATLASWARE BOTTLE HAS BEEN GIVEN A FACE-LIFT WITH A NEW LOGO AND A FEW EXCITING COLOURS!**

Atlasware provides a high-quality 304 stainless steel bottle that replaces the use of plastic bottles with an eco-friendly alternative.

This revolutionary product keeps your cool drinks cold for 24 hours and your warm drinks hot for 18 hours.

With its durable properties and lifetime guarantee, it's the only bottle you'll ever need!

- Lifelong guarantee
- Unbreakable double-walled construction
- Leak proof, shock proof & rust proof
- Preserves flavour & freshness
- Suitable for indoor & outdoor use
- BPA free certified
- Environmentally friendly

**ATLASWARE**

Please visit [www.atlasware.co.za](http://www.atlasware.co.za) for a full listing of country wide Atlasware retailers.  
Find us on Facebook & Instagram - @AtlaswareSA



MES CONSULTANTS - 082 563 4427

# Satellite broadband internet

Reliable Internet, no matter where you live!



- Reliable, Fast internet connectivity anywhere in SA
- Fast Internet for browsing, e-mail, whatsapp and social media
- Cost effective, Fast and Reliable connections
- Unlimited, Capped or Fully Uncapped Options available at download speeds up to 35 Mbps
- Solutions that support VOIP and Streaming applications
- No Daily limits or Daily Fair Usage Policies
- Quick installation time lines
- Paratus SA also provides MPLS, Fibre and Licensed Wireless Solutions

## JUST LAUNCHED!!

### NEW MAX UNLIMITED - HIGHSPEED CONSUMER SATELLITE INTERNET

Three options available:

Up to 5 Mbps, 10 Mbps and 20 Mbps Download Speeds  
20/6 Max Unlimited @ R 1999-00\* per Month (VAT incl.)  
Fast Enough to support Streaming Services

\*excludes hardware, travel, installation | \*Terms and conditions Apply



+27 (0) 12 940 0660 | [www.maxwell.co.za](http://www.maxwell.co.za)



## RELIABLE, ALWAYS-ON INTERNET CONNECTIVITY

How crucial is your internet connectivity to you?

Access to reliable, always-on, internet is becoming more of a necessity than a basic requirement. There are many local terrestrial alternatives available, whose costs are low, but cannot provide the required reliability, due to current and future load shedding, as well as vandalism and theft.

The frequency of load shedding puts great strain on terrestrial network resources and leaves you without connectivity for long periods of time. With a satellite-based solution, you will always remain connected as long as you have power-generating solutions on your farm or house to power other services and appliances.

Traditionally the cost of getting reliable internet connectivity is a barrier to access for many people, especially those living in rural or remote areas with limited or no conventional internet or telecommunication services. The good news is that with the arrival of new solutions those costs have reduced and we foresee a continued reduction of costs.

We have just launched our new Max Unlimited Satellite Internet Solutions. This solution provides you with three unlimited options: 5 Mbps, 10 Mbps and 20 Mbps download speeds. We also offer capped and uncapped solutions, supporting VOIP, for larger SME's and lodges. The solution focussed on SME's and lodges delivers uncapped, unshaped connectivity at lower contention ratio's than traditional broadband solutions, at speeds of between 1 Mbps and 15 Mbps.

Since the launch of consumer broadband satellite internet in 2011, South Africans living in unserved and under-served areas have been offered connectivity literally anywhere in South Africa, with higher speeds and access to high throughput satellites.

Maxwell Technology, now known as Paratus SA, has established itself as a leading satellite-based internet and data solutions provider offering a range of affordable and reliable high-speed broadband internet solutions to clients.



CONTACT PARATUS SA FOR MORE INFORMATION ON HOW YOU CAN BENEFIT FROM BEING RELIABLY CONNECTED:  
012 940 0660 OR VISIT [WWW.MAXWELL.CO.ZA](http://WWW.MAXWELL.CO.ZA)

# GEVORDERDE TEGNOLOGIE

Ons stel 'n nuwe standaard vir Boorgatsilinders en Vlotterkleppe

Alle produkte word van Vlekvrye Staal vervaardig



Missie:

"Verbind om waarde toe te voeg tot landbou deur gehalte produkte te verskaf vir elke toepassing."



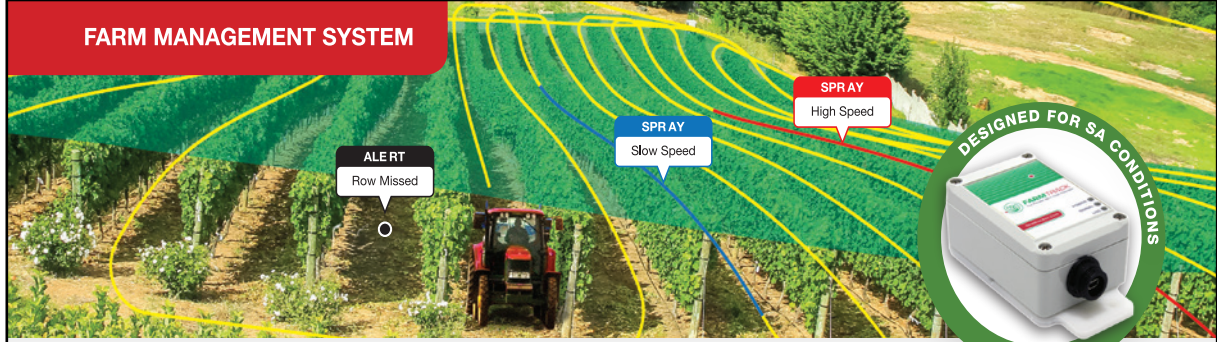
**SUPERMAX**



www.primasupermax.com

TEL: +27 (0)21 981-3774 SEL: +27 (0)82 452 0863  
E-POS: primaeng@mweb.co.za

## FARM MANAGEMENT SYSTEM



# Monitor and Manage your Farm with **GPS Precision.**

**SPEAK TO US TODAY!**

Take control of your farm with FarmTrack.

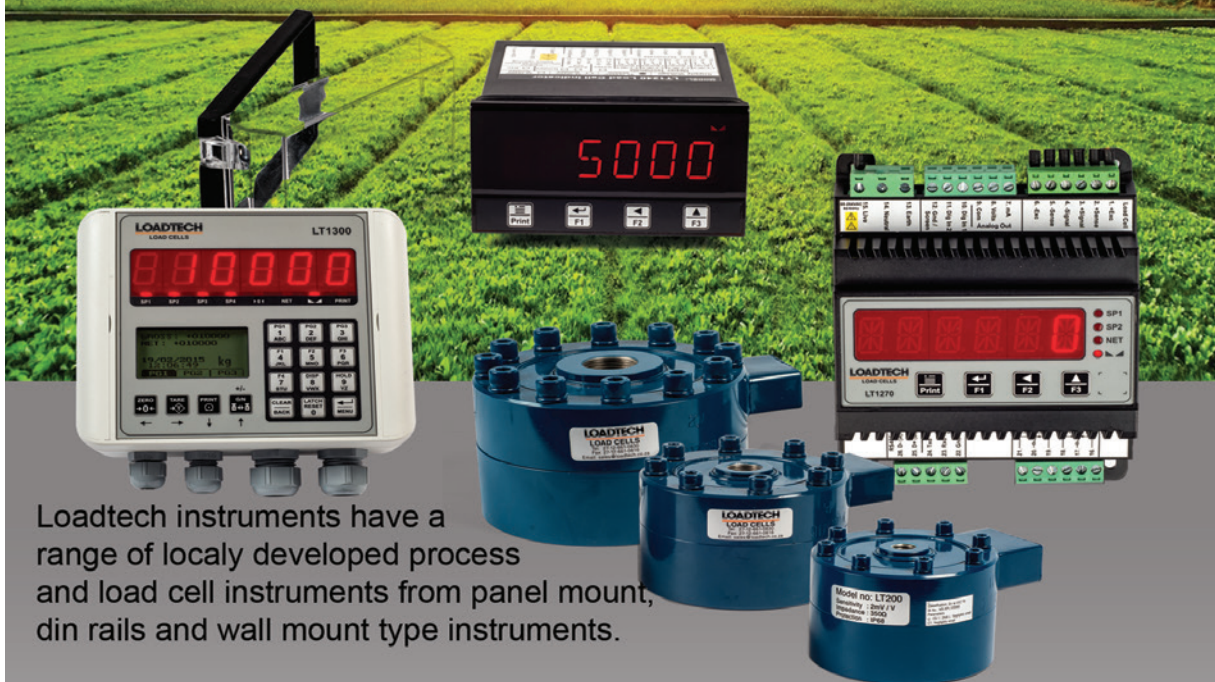
**Tel: 021 880 1163**

- Receive daily reports
- Monitor spraying activity
- Calculate driver productivity
- Detect missed rows
- Track fuel and water refills



www.farmtracksa.com

We understand digital indicators,  
and your unique application,  
**PERFECTLY!**



Loadtech instruments have a range of locally developed process and load cell instruments from panel mount, din rails and wall mount type instruments.

Our Digital Indicator range can display process parameters such as: mA, millivolts, frequency, counting, potentiometer, even timer, real-time clock, manual analog out station and load cell applications.

We also have a range of remote displays and extra-large displays.

**Call us now for quality, locally manufactured solutions that work!**

**LOADTECH**

**LOAD CELLS**

Leaders in quality load cells & weighing technology

Tel: +27 (0)12 661 0830  
email: [sales@loadtech.co.za](mailto:sales@loadtech.co.za)  
[www.loadtech.co.za](http://www.loadtech.co.za)



# LOADTECH LEADS IN SUPPLYING QUALITY WEIGHING COMPONENTS

## OUR VALUES:

### **HONESTY, INTEGRITY, FAIRNESS, RESPECT!**

Loadtech is one of the best-known manufacturers and suppliers of load cells in Southern Africa. When it comes to specialized weighing solutions, the company has over 50 years collective experience. Founded in 1987, Loadtech Load Cells has firmly established its reputation as a leader in quality load cell manufacturing.

Whether your requirement is for custom weighing systems, applications such as force measurement, centre of gravity determination or crane weighing systems, Loadtech will provide an innovative and economical solution, staying by your side long after the sale.

Loadtech Load Cells has an accredited explosion protection rating on various locally manufactured load cells.

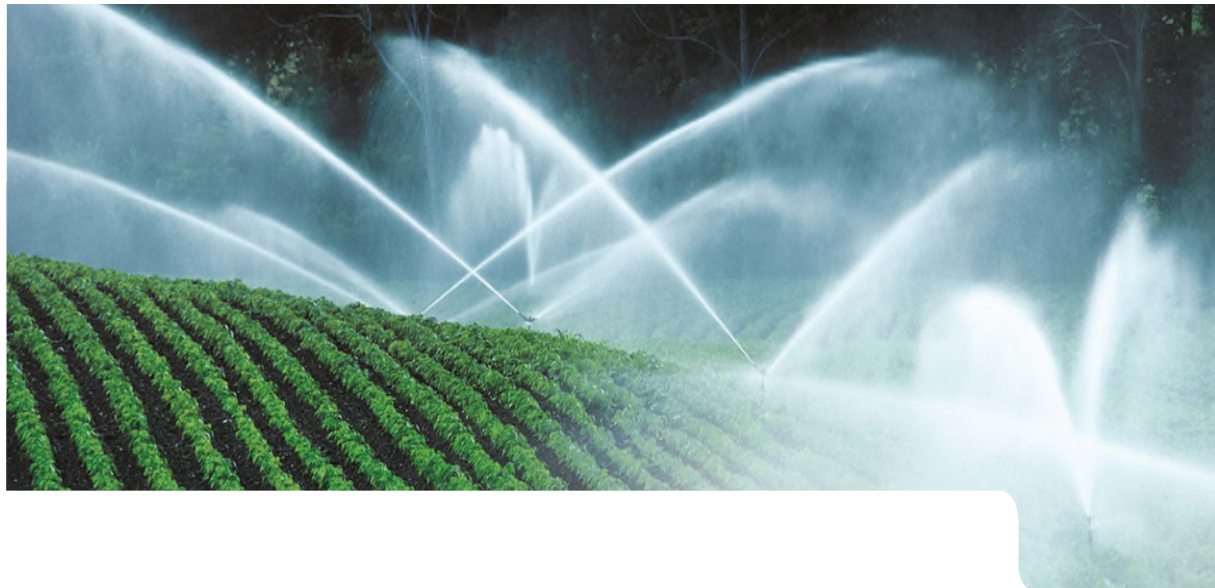
Technical application assistance with regard to your specific needs, and attention to detail are unmatched in the industry.

The combination of own manufacture, and the extensive range of products from Vishay transducers, Vigia, Datum and Nobel, allows Loadtech Load Cells an unequalled degree of flexibility in offering weighing solutions.

Loadtech products range from robust industrial load cells, to the highest accuracy commercial load cells. The range extends from 300g to 500 ton with accuracies from 0.2% to 0.03%, most of which are available from stock. Where standard load cells are not suitable, special load cells, or force sensors are designed and manufactured to fit your specific needs.

**We have the solution... Use the phone – it's quicker!**  
**Tel: +27 (0) 12 661 0380 | Fax: +27 (0)12 661 0816**  
**E-mail: [sales@loadtech.co.za](mailto:sales@loadtech.co.za)**





## **When every drop counts – KSB water pumps is what you need.**

Irrigation pumps are used to pump water from a lower to a higher level from which the water then flows through channels to the fields requiring irrigation (lift operation) or to raise it to the required pressure head so that it can be sprayed on the fields via piping systems (sprinkling). The heads involved range from approx. 1 m for normal lift operation to 40 m for sprinkling. In special cases, heads exceeding 100 m may be required.

The flow rate varies according to the area to be irrigated, the nature of the soil, the type of crop cultivated and the climate. A quantity of 1 to 2 litres per second and hectare can be assumed as a rough value for orientation.

Contact us on +27 11 876 5600 or visit our website [www.ksb.com/ksb-za](http://www.ksb.com/ksb-za)



Your B\_BBEEE Level 1 Partner

**> Our technology. Your success.**  
Pumps • Valves • Service



# beperk risiko teen droogte

Boer slim met AgriClime™, die nuwe oplossing wat jou Syngenta® aankope beskerm in tye van droogte tydens die groeiseisoen met 'n kontant terugbetaling.\*

Gemoedsrus, die Slimboer manier.



[www.syngenta.co.za](http://www.syngenta.co.za)



syngenta.

\* Bepalings en voorwaardes geld.  
AgriClime™ is onder registrasie van Syngenta Groepmaatskappy.  
Syngenta Suid-Afrika (Edms) Beperk. Privaatsak X60, Halfway House, 1685. Tel. (011) 541 4000. [www.syngenta.co.za](http://www.syngenta.co.za)  
© Syngenta Ag, 2000. Kopiereg op hierdie dokument word voorbehou. Alle ongemagtigde reproduksie word verbied.

   @SyngentaSA

# GROW A BETTER TOMORROW



NviroTek Laboratories is an independent and accredited testing laboratory group, with a strong geographical presence in the Southern African region.

NviroTek provides the following analytical support to the agricultural food chain by testing:

- Soil
- Fertilizer and Lime
- Growth Media
- Compost
- Water
- Plant Material (fruit and vegetables)
- Multi Residue Levels (MRL)
- Animal Feeds and Pastures
- Effectiveness of Hygiene Monitoring at Food Processors
- Microbiological contaminants of Foodstuff, Feeding and Swabs
- Elements in the Environment

For more  
information:

---

**NviroTek Laboratories,  
Hartbeespoort: 012 252 7588**

**NviroTek Wynland  
Laboratories: 021 873 3514**

[www.nviroteklabs.co.za](http://www.nviroteklabs.co.za)

*SANAS Accredited Testing  
Laboratory, No's: T0822 and T0349*





# So Many Reasons...



**Cobb500™**

Simply the  
best broiler  
in the world

**Theo Bezuidenhout**

Technical and Sales Executive

Tel: +27 (0)83 257 3025

E-mail: [theobezuidenhout@rdfoods.com](mailto:theobezuidenhout@rdfoods.com)

[www.cobbsa.co.za](http://www.cobbsa.co.za)



**ONE FAMILY.  
ONE PURPOSE.**





# ENERGY SOLUTIONS FOR ALL TYPES OF POWER AND APPLICATIONS

©MES CON SA

## ALTERNATORS



## BATTERIES



## GENERATORS



## SUB SAHARA POWER DISTRIBUTORS

We are committed to supplying you with the energy source to accompany you in the successful completion of each of your projects all over Sub Sahara Africa, Sub-Saharan power distributors are the Sole distributors of various High quality power related Brads from Europe and the US.

As a sole distributor for Sub-Saharan Africa, Sub-Saharan Power Distributors is authorized to appoint none exclusive sub distributors for the nine provinces within South Africa and for Export territories such as Botswana, Swaziland, Mozambique, Malawi, Zimbabwe and Angola

## FUEL CLEANING



## FUEL MANAGEMENT



[www.sspd.co.za](http://www.sspd.co.za)

WITH OVER TEN YEARS OF EXPERIENCE IN THE GENERATOR BUSINESS,  
WE UNDERSTAND THE NEED TO PROVIDE QUALITY ENERGY SOURCE AT  
COMPETITIVE PRICES.



ANDREW SCHARNECK :  
+27 (0) 11 493 0773 | [info@sspd.co.za](mailto:info@sspd.co.za)



# **SUB SAHARA POWER DISTRIBUTORS STRIVES TO PROVIDE YOU WITH THE BEST QUALITY PRODUCTS AND SERVICES**

Founded in June 2005 and sold their first Diesel Generator set in September of the same year, Sub-Sahara Power Distributors have a reputation for quality products, coupled with quality services and has broadened their export market. They are well represented in the SADC region through a network of distributors. Sub-Sahara Power Distributors is committed to supplying you with the energy source to accompany you in the successful completion of each of your projects all over Sub Saharan Africa. The proximity of their distribution network and dynamism of their customer services policy enables them to be a powerful force and provide the basis of the company values.

Sub-Sahara Power Distributors are the Sole distributor of the SDMO products for Sub Saharan Africa. As the sole distributor they are authorized to appoint none exclusive sub distributors for the nine provinces within South Africa and for export territories such as Botswana, Lesotho, Namibia, Swaziland, Mozambique, Zambia, Malawi, Zimbabwe and Angola.

SDMO is one of the world leaders in the manufacturing of European generating sets

Founded in June 2005 and sold their first Diesel Generator set in September of the same year, Sub-Sahara Power Distributors have a reputation for quality products, coupled with quality services and has broadened their export market. They are well represented in the SADC region through a network of distributors. Sub-Sahara Power Distributors is committed to supplying you with the energy source to accompany you in the successful completion of each of your projects all over Sub Saharan Africa. The proximity of their distribution network and dynamism of their customer services policy enables them to be a powerful force and provide the basis of the company values.

## **WE SPECIALISE IN:**

**ALTERNATORS**

**BATTERIES**

**FUEL CLEANING**

**GENERATORS**

**FUEL MANAGEMENT**



**[WWW.SSPD.CO.ZA](http://WWW.SSPD.CO.ZA)**

For any queries please contact Andrew Scharneck: +27 (0) 11 493 0773/4 or email their marketing team at: [info@sspd.co.za](mailto:info@sspd.co.za) | [marketing@sspd.co.za](mailto:marketing@sspd.co.za)

# JBH Wheels cc

**Sales Agriculture:**

Cobus: 081 752 9181 cobus@jbhwheels.co.za

**Office:**

Barnie: 087 037 2901 barnie@jbhwheels.co.za

**Sales/Industrial/Earth Moving:**

Hannes: 087 894 0883 hannes@jbhwheels.co.za

74 Visagie Weg  
Pretoriusstad, Nigel

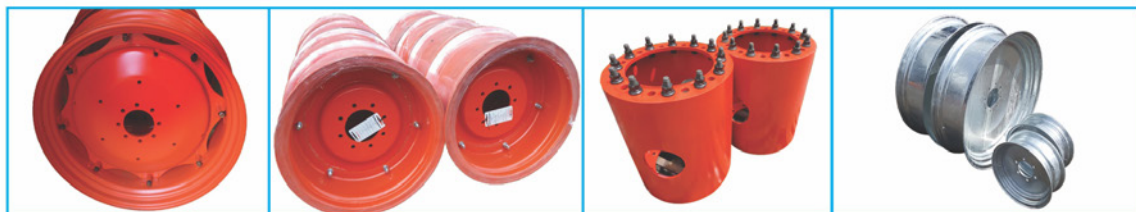
Fax: 086 241 2762  
| [www.jbhwheels.co.za](http://www.jbhwheels.co.za)

**When purchasing a tractor it doesn't always seem to fit your specific needs.**

**Here at JBH Wheels we can convert your tractor rim(s) to your specific requirements.**

Special modifications and conversions on all leading models such as **John Deere, Claas, New Holland, Landini, Kubota, Massey Ferguson, Case.**

*Manufacturers & Suppliers of Industrial, Agricultural & Heavy Duty wheel rims.*



beverages



dairy farming



dairy processing



utilities



transport



food



core technologies



Milking & Cooling



Separators



Decanters



Homogenisers



Valves



Spray Drying



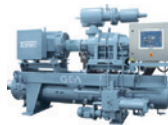
Aseptic Filling



Brewery & Dairy



Compressors



Packages & Skids



Ice Machines



Freezers

GEA Southern & Eastern Africa

48 Reedbuck Crescent, Corporate Park South, Midrand 1682, RSA  
 Tel. + 27(0)11 392 7114, Fax. +27(0)11 392 7000  
 info-sea@gea.com

www.gea.com

engineering for a better world



### OPPOSITE LOCK BULL BARS

Premium post type full replacement bull bars, including fog lights and LED park lights and indicators. Increasing approach angles, safety and is fully airbag certified.

# YOUR ADVENTURE STARTS HERE



**opposite lock**  
4WD & Vehicle Accessories



### PIAK NON LOOP BAR

Designed for fitment with no bumper cut if applicable to the vehicle. Fitted with either LED or Halogen fog lamp. Multi fold wing design including taper for optimum strength & approach angle.



## PREMIUM SOLUTION FOR YOUR OFF-ROAD REQUIREMENTS



### TUNGSTEN WINCHES

Textured UV and corrosion resistant finish, completely waterproof, corrosion resistant hardware and fittings, heavy duty sealed high amperage contactor controller and multi segmented cam activated brake.



### WIZERD

A one-stop-shop for Suzuki off-road vehicles customizations. Best known for work on the Suzuki Jimny and the Suzuki Grand Vitara.



### OUTBACK 4WD INTERIOR

Outback 4WD interior roof consoles are made to be a part of the vehicle and not apart from it. The product includes LED reading lights and a drop down locker box for storage. 2-way radio inserts are available for non standard DIN size radios.



### LIGHTFORCE DRIVING LIGHTS

Australian designed and manufactured Lightforce has built a formidable reputation as a global leader in innovative design and excellence in the manufacture of high performance and durable driving lighting systems.



## BULL BAR

- Be protected with a LAS Bull bar.
- Unique grill angled Cato strap design.
- Includes fog lights for low light conditions.
- LED indicator and park lights for extended lifespan.
- Bull Bar corner under plates and centre plate as standard.
- Winch compatible up to 12000lbs low profile winch.
- Increases your vehicles approach angle.
- Round jacking point (also assists in self recovery)
- 10mm dual recovery points for a safe recovery.
- Light and grill protection.
- Spotlight wiring holes predrilled to have your spotlights fitted neatly.

## UNDERBODY PROTECTION

LAS Bash plates are made out of 3mm Domex 550 steel. They are E Coated for longer protection against rust. A grey powder coating is added to finish it off. The LAS Bash is lighter than your everyday 4-5mm mild steel bash plate. The 3mm Domex 550 has the same strength as 5mm mild steel bash plates, but weighs significantly less. Apart from the sump guard, LA Sport makes a wide variety of underbody protection and is a one-stop-shop for all 4x4 needs.



## PROFENDER SUSPENSION

LAS Profender twin tube shocks are designed with a big piston and a big shaft that provides excellent performance suited for heavy duty use. The perfect specification allows the driver to enjoy a more comfortable and improved ride.



## SNORKEL

- First Full Replacement snorkel.
- All our Snorkels are made from LLDPE (Linear Low-Density Polyethylene) ready for the harsh African sun and bush
- Increases wading depth
- Increases air filter lifespan with a higher intake
- A must for the serious overlander
- Available for the V6 and V8 70 Series



## LIFTING KITS

LAS Pro Leveling Available for: Toyota Hilux Revo and Vigo, Fortuner, Ford T6.

The Wheel spacer is a device that fits between the wheel and the hub to increase the vehicle wheel track width. By increasing or widening the track of your vehicle, the road holding characteristics improves drastically due to an improvement of the vehicle's centre of gravity.



FOR MORE INFO AND STORE ENQUIRIES

011 697 0001 | [www.oppositelock.co.za](http://www.oppositelock.co.za) | [info@oppositelock.co.za](mailto:info@oppositelock.co.za)



# DISTRIBUTION LIST

TOWN   CITY	SHOP	PROVINCE
ALBERTINIA	SSK AGRILAND	WESTERN CAPE
AMERSFOORT	HINTERLAND	MPUMALANGA
BAINSVLEI	BAINSVLEI CO-OP	FREE STATE
BEAUFORT WES	BKB	WESTERN CAPE
BELFAST	HINTERLAND	MPUMALANGA
BERGVILLE	HINTERLAND	KWAZULU-NATAL
BETHLEHEM	HINTERLAND	FREE STATE
BIZANA	TWK	EASTERN CAPE
BLOEMFONTEIN	BKB	FREE STATE
BLOEMFONTEIN	EHD COMPONENTS	FREE STATE
BLOEMHOF	SUIDWES LANDBOU	FREE STATE
BOSHOF	SUIDWES LANDBOU	FREE STATE
BOTHAVILLE	SUIDWES LANDBOU	FREE STATE
BRITS	AFGRI	NORTH WEST
BRITS	JJ'S EXHAUSTS	NORTH WEST
BRITS	OBARO	NORTH WEST
BRONKHORSTSPRUIT	AFGRI	MPUMALANGA
BULTFONTEIN	HINTERLAND	FREE STATE
CAROLINA	HINTERLAND	MPUMALANGA
CAROLINA	TWK	MPUMALANGA
CEDERVILLE	TWK	KWAZULU-NATAL
CERES	KAAP AGRI	WESTERN CAPE
CRADOCK	AGRICO	EASTERN CAPE
CULLINAN	AFGRI	GAUTENG
DE AAR	BKB	NORTHERN CAPE
DELMAS	HINTERLAND	MPUMALANGA
DELMAS	AFGRI	MPUMALANGA
DUNDEE	HINTERLAND	KWAZULU-NATAL
ELLIOT	OVK	EASTERN CAPE
FAERIE GLEN - PRETORIA	FEARIE GLEN ANIMAL CLINIC	GAUTENG
ERMELO	HINTERLAND	MPUMALANGA
FORT BEAUFORT	THE CO-OP	EASTERN CAPE
GERDAU	NWK	NORTH WEST
GRAAFF-REINET	OVK	EASTERN CAPE
GRAAFWATER	KAAP AGRI	WESTERN CAPE
GREYTOWN	TWK	KWAZULU-NATAL
HANKEY	THE HUMANSDORP CO-OP	EASTERN CAPE
HARRISMITH	HINTERLAND	FREE STATE
HARTSWATER	HINTERLAND	NORTHERN CAPE
HEIDELBERG	HINTERLAND	GAUTENG
HEIDELBERG	SSK AGRILAND	WESTERN CAPE
HEILBRON	HINTERLAND	FREE STATE
HERBERTSDALE	SSK AGRILAND	WESTERN CAPE
HEROLD	SSK AGRILAND	WESTERN CAPE
HOEDSPRUIT	OBARO	LIMPOPO
HOOPSTAD	HINTERLAND	FREE STATE
HOOPSTAD	SUIDWES LANDBOU	NORTH WEST
HUMANSDORP	THE HUMANSDORP CO-OP	EASTERN CAPE
ISANDO	ISANDO TRUCK & TRAILER	GAUTENG
IXOPO	TWK	KWAZULU-NATAL
JAN KEMPDORP	HINTERLAND	NORTHERN CAPE
JHB MARKET	REBELO, HALL 1	GAUTENG
KLERKSDORP	HINTERLAND	NORTH WEST
KNYSNA	SSK AGRILAND	WESTERN CAPE
KRAKEEL	SSK AGRILAND	EASTERN CAPE
KROONSTAD	HINTERLAND	FREE STATE
KURUMAN	AGRIMARK	NORTHERN CAPE
KYA SANDS	ANB VET	GAUTENG
LADYSMITH	HINTERLAND	KWAZULU-NATAL
LEEUDORINGSTAD	SUIDWES LANDBOU	NORTH WEST
LETSITELE	NTK	LIMPOPO
LICHTENBURG	LICHTENBURG OMHEININGS	NORTH WEST
LICHTENBURG	BEARING MAN GROUP	NORTH WEST
LOUWNA	SUIDWES LANDBOU	NORTH WEST
LOXTON	KAROO MEAT FARMERS CO-OP	NORTHERN CAPE
LUTZVILLE	KAAP AGRI	WESTERN CAPE
LYDENBURG	HINTERLAND	MPUMALANGA
MAKHADO	KAAP AGRI	LIMPOPO
MALMESBURY	KAAP AGRI	WESTERN CAPE



TOWN   CITY	SHOP	PROVINCE
MARBLE HALL	TWK KUNSMIS	LIMPOPO
MIGDOL	SUIDWES LANDBOU	NORTH WEST
MISGUND	SSK AGRILAND	WESTERN CAPE
MOOI RIVIER	TWK	KWAZULU-NATAL
MOSSSELBAY	SSK AGRILAND	WESTERN CAPE
NABOOMSPRUIT	OBARO	LIMPOPO
NELSPRUIT	HINTERLAND	MPUMALANGA
NEWCASTLE	HINTERLAND	KWAZULU-NATAL
NIGEL	HINTERLAND	GAUTENG
ODENDAALSRUS	HINTERLAND	FREE STATE
OP-DIE-BERG	KAAP AGRI	WESTERN CAPE
ORANJESIG	DIY SUPERSTORE	FREE STATE
ORANJESIG	TRIPROD	FREE STATE
OUDSHOORN	KLEIN KAROO CO-OP	WESTERN CAPE
PAARL NORTH	KAAP AGRI	WESTERN CAPE
PAMONA - JHB	AIRPORT PETS - HYPER STORE	GAUTENG
PARYS	HINTERLAND	FREE STATE
PETRUSBURG	HINTERLAND	FREE STATE
PHILIPPI	KAAP AGRI	WESTERN CAPE
PIET RETIEF	TWK MIDAS	MPUMALANGA
PIETERMARITZBURG	MASCOR	KWAZULU-NATAL
PIETERMARITZBURG	PALMER AGRI & TRACTOR	KWAZULU-NATAL
PIETERMARITZBURG	TWK	KWAZULU-NATAL
PIETERMARITZBURG	TILLMASTER	KWAZULU-NATAL
PIETERSBURG	NTK	LIMPOPO
PIKETBERG	KAAP AGRI	WESTERN CAPE
PLETTENBERGBAY	SSK AGRILAND	WESTERN CAPE
PONGOLA	TWK	KWAZULU-NATAL
PORT ELIZABETH	THE HUMANSDORP CO-OP	EASTERN CAPE
PORTERVILLE	KAAP AGRI	WESTERN CAPE
POTCHEFSTROOM	HINTERLAND	NORTH WEST
POTCHEFSTROOM	KLEINPLAAS PYPE	NORTH WEST
POTGIETERSRUS	OBARO	LIMPOPO
PRETORIA - ATTERBURY	FARM CITY	GAUTENG
PRETORIA - MONTANA	N1 4X4	GAUTENG
PRETORIA - PYRAMID	N1 4X4	GAUTENG
PRIESKA	GWK	GAUTENG
PRINCE ALBERT	KLEIN KAROO CO-OP	NORTHERN CAPE
QUEENSTOWN	BKB	WESTERN CAPE
RAWSONVILLE	KAAP AGRI	EASTERN CAPE
REITZ	VAN ZYL STAALWERKE	WESTERN CAPE
REIVILO	SUIDWES LANDBOU	FREE STATE
RIEBEEK-WEST	KAAP AGRI	NORTH WEST
RIVERSDAL	SSK AGRILAND	WESTERN CAPE
ROODEPLAAT	AIRPORT PETS - HYPER STORE	WESTERN CAPE
RUSTENBURG	OBARO	GAUTENG
SENEKAL	AFGRI	NORTH WEST
SPRINGBOK	AGRIMARK	FREE STATE
STELLA	SUIDWES LANDBOU	NORTHERN CAPE
STELLENBOSCH	KAAP AGRI	NORTH WEST
STILL BAY EAST	SSK AGRILAND	WESTERN CAPE
SWELLEN DAM	SSK AGRILAND	WESTERN CAPE
THEUNISEN	HINTERLAND	WESTERN CAPE
TOSCA	SUIDWES LANDBOU	FREE STATE
TZANEEN	KAAP AGRI	NORTH WEST
TZANEEN	NTK	LIMPOPO
TZANEEN	SPRAYRITE	LIMPOPO
TZANEEN	WD SAAILINGE	LIMPOPO
UNDERBERG	TWK	LIMPOPO
UNIONDALE	SSK AGRILAND	KWAZULU-NATAL
UPINGTON	AGRIMARK	WESTERN CAPE
VENTERSDORP	HINTERLAND	NORTHERN CAPE
VEREENIGING	HINTERLAND	NORTH WEST
VEREENIGING	VICOR BULK	GAUTENG
VOLKSRUST	BKB	GAUTENG
VREDE	BKB	MPUMALANGA
VRYHEID	HINTERLAND	FREE STATE
WELKOM	HINTERLAND	KWAZULU-NATAL
WESSELSBRON	SUIDWES LANDBOU	FREE STATE
WINTERTON	TWK	FREE STATE
WOLMARANSTAD	HINTERLAND	KWAZULU-NATAL
WOLMARANSTAD	SUIDWES LANDBOU	NORTH WEST
WORCESTER	KAAP AGRI	NORTH WEST
WORCESTER	WP CHIPPER	WESTERN CAPE



# FIT YOUR LAND CRUISER WITH A 3.0L D4D ENGINE!

THE N1 4X4 D4D CONVERSION CONSISTS OF:



## D4D Engine

- ✓ Compression Test
- ✓ New Water Pump Timing Belt Kit
- ✓ Injectors Checked
- ✓ New Fan Belt
- ✓ Standard Turbo
- ✓ Front Mount Inter-cooler Kit
- ✓ Low Mileage Engine (60 000km - 100 000km)

## D4D Conversion also includes

- ✓ New Custom Built Harness
- ✓ New MOTEC ECU
- ✓ New Gearbox Adaptor Plate
- ✓ New Clutch Kit
- ✓ Diff Ratio (4.3 to 3.9)
- ✓ New DE GRAAFS S/Steel Exhaust System (76mm)
- ✓ All labour (in our **RMI** Certified Workshop)

N1 4X4's 1500m<sup>2</sup> **RMI** Certified Workshop can also provide you with ongoing services at 10 000 km intervals.



6 Months **RMI** warranty on workmanship. This D4D Conversion includes all aspects of the Engine as well as full Fuel and Lubrication Service. A Comprehensive Assessment of your Land Cruiser is available on request and is not included in the D4D conversion.

t. +27 12 545 0200 e. info@n14x4.co.za w. www.N14x4.co.za

# OPSOEK NA LAND CRUISER PARTE?



[www.N14x4.co.za](http://www.N14x4.co.za)

N1 4x4 is een van Suid-Afrika se grootste verskaffers van nuwe, herboude en gebruikte onderdele.

Ons verskaf onderdele, veringstelsels, toebehore, herboude enjins, ratkaste en ewenaars, asook eksklusiewe handelsmerkklere, -skoene en egte leerprodukte. N1 4x4 bied verder goeie kwaliteit Land Cruiser bakwerkvervangingspanele teen bekostigbare pryse aan.

Ons eksklusiewe handelsmerkklerereeks het iets vir die hele gesin. Daar is 'n hele paar nuwe toevoegings tot die reeks hierdie jaar: Vir die kinders is daar pette, ma en dogter kan wegstap met dieselfde pienk vellies en pa kan dieselfde soort pet dra as die Cruiser-reeks

waarin hy rondrits. Kyk gerus op ons webwerf vir aanlyn bestellings: [www.N14x4.co.za](http://www.N14x4.co.za)

N1 4X4 is bekend vir die vervaardiging van gespesialiseerde mynvoertuie asook wildbesigtigings voertuie en spog met 'n ten volle toegeruste RMI-gesertifiseerde werkwinkel waar jy herstelwerk, onderhoud en herbouings kan laat doen.

Kom maak gerus 'n draai by enige van ons twee takke en geniet 'n warm koppie koffie. Ons hooftak is geleë langs die N1 snelweg in Pyramid en ons ander tak in Montana, Pretoria.

Ons hooftak huisves 'n Land Cruiser museum wat bestaan uit die '20, '40, '42, '45 en '55 reekse. Hierdie ou modelle is baie gewild onder Land Cruiser geesdriftiges vir herstelwerk en om weer nuwe lewe in jou Cruiser te blaas.

By N1 4x4 hou ons 'n groot verskeidenheid onderdele aan vir die herstel van jou Land Cruiser. Die verkoopsvertegenwoordigers is kundiges op hulle gebied met jare se ervaring wat gereed staan met advies en wenke om die herbou van jou Cruiser pynloos te maak.

**KONTAK ONS GERUS VIR ENIGE NAVRAE!**

**+27 (0) 545 0200 of [info@n14x4.co.za](mailto:info@n14x4.co.za)**

**ONTHOU! N1 4X4 IS JOU LAND CRUISER EN TOYOTA 4WD  
EENSTOPWINKEL VIR ONDERDELE EN MEER!**

# Piket

## Implemente



SCAN QR CODE

tel: +27(0)22 913 2435  
e-pos: info@piket.co.za  
web: www.piket.co.za



## NO TILL DEKGEWAS FYNSAAD PLANTERS

- Modelle: 6-Ry / 8-Ry / 10-Ry / 14-Ry / 16-Ry / 20-Ry
- 3-Kompartement saad, fynsaad & kunsmis kis
- Plant van dekgewas in wingerde & vrugteboorde of weiding op suiwel & vee plase



14-RY / 16-RY / 20-RY:  
PLANT WEIDING OP  
SUIWEL & VEE PLASE



6-RY / 8-RY / 10-RY:  
DEKGEWAS IN WINGERDE  
& VRUGTEBOORDE



NO TILL: PLANT IN  
GEVESTIGDE WEIDING



MAKLIK & VINNIGE  
KALIBRASIE

## EKONOMIESE NO TILL MIELIEPLANTERS

- Modelle: 1-Ry / 2-Ry / 3-Ry / 4-Ry / 5-Ry / 6-Ry
- Bestaan uit 'n 3-kompartement saadkis vir aanwending van fynsaad, saad & kunsmis
- Gebruik: Mielies, bone & klein graansoorte
- Ekonomies



EKONOMIES



GEBRUIK: MIELIES,  
BONE & KLEIN  
GRAANSOORTE



VERSTELBARE  
DIEPTE BEHEER



NO TILL: PLANT IN  
GEVESTIGDE WEIDING  
- OF VOORBEREIDE LANDE



Kontak ons vir meer inligting by tel: +27(0)22 913 2435 of  
stuur 'n e-pos aan: info@piket.co.za of besoek: www.piket.co.za