

# AGRI FOODSA MAG

FREE SUPPLIERS GUIDE

AUG - SEP 2018  
Vol 3 • No 2



**BKT**  
GROWING TOGETHER

**TUBESTONE**  
PRECISION TYRE BRANDS



[www.gsiafrica.co.za](http://www.gsiafrica.co.za)

STORAGE | CONDITIONING  
MATERIAL HANDLING | STRUCTURES





POWERED BY



# Conveyor Component & Engineering Plastics Solutions

With over 30 years in business, IRP Engineering Plastics is South Africa's leading Conveyor Components and Engineering Plastics solutions providers to the food, beverage and packaging industries.

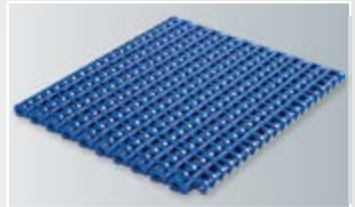
A strong commitment to local manufacturing with unrivaled quality and service makes IRP Engineering Plastics the only company of choice to partner with in providing you with all your Conveyor Component and Engineering Plastics needs.



**BULK MATERIALS HANDLING/  
ELEVATOR BUCKETS**



**CONVEYOR COMPONENTS**



**CONVEYOR BELTING/  
MODULAR BELTING**



**SPECIALIZED MACHINING**



**SIFTING SCREENS/  
SIEVE CLEANERS**



**WEAR LINERS/  
CHUTE LINERS**



**WEARSTRIPS**



**PLASTIC & STAINLESS STEEL  
SLATCHAINS**

Unit 6, Aero Park, Corner Thunderbolt Lane & Amelia Drive, Lanseria Corporate Estate, Pelindaba Road  
PO Box 2666, Honeydew, 2040 | Tel: 010 020 7159 | [jhb@irp.co.za](mailto:jhb@irp.co.za)

[www.irp.co.za](http://www.irp.co.za)



*Mellow, mild, September day,  
calling children out to play.  
Summer's on her way!*

I'm as happy as a blade of grass swaying in the breeze, dear reader, because spring is upon us!

With winter's footprints in the past, we can enjoy longer days, bluer skies and an abundance of vibrant colours & delicious fragrances as fields & gardens come alive. I feel a new vigour to get up & going, and I've personally used the Aug/ Sep 2018 edition of the AGRIFOODSA Magazine to complete a few looming tasks with great ease.

In this 84-page issue we've featured some of the best product & service providers in Agri & Food that South Africa has to offer. At the top of this list is our cover page-featured advertiser, Tubestone. Offering world-class tyre, rim and tube brands, such as BKT, for agricultural and industrial tyres, Tubestone goes beyond what would be expected of a tyre distributor.

MD, Pieter Kruger, has created a Family feeling where great emphasis is placed on excellence in customer service and superior after-care is provided. There is an incredible success story and an example what can be done with hard work, determination, a loyal customer base, and exceptional management & employees.

Tubestone and thousands of other advertisers can be viewed on the AFSA Website (<http://www.agrifoodsa.info>). Head on over to our Competitions page on the AFSA Website (<http://www.agrifoodsa.info/competitions>) to win exciting prizes.

Our AFSA Facebook page (<https://www.facebook.com/agrifoodsa>) offers select content like Boererate, Advertiser Showcases, recipes and funnies, as well as helpful & informative articles. Why not enter the weekly competitions on Saturday mornings at 08:00 where a Takealot.com voucher is up for grabs?! This is sure to vivify your week!

Until next time, may your days be rosy and bright.

*Chantell Schmahl*

EDITOR IN CHIEF  
@chantellschmahl

## EDITORIAL COMMITTEE

Editor in chief : Chantell Schmahl  
Managing director : Mabel Schmahl  
HR manager : Leon Schmahl  
Production assistant : Ronel Schmahl  
Personal assistant : Aby Maclellan

## ACCOUNTS & SUBSCRIPTIONS

Ida van Zweel : +27 (0) 12 997 3407  
[accounts@agrifoodsa.info](mailto:accounts@agrifoodsa.info)

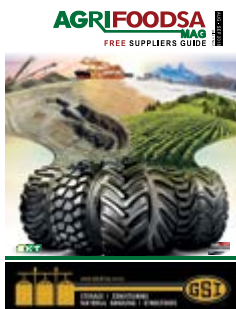
## ADVERTISING & RATES

Mabel Schmahl : +27 (0) 82 563 4427  
[mabel@agrifoodsa.info](mailto:mabel@agrifoodsa.info)

Sebastian van der Berg : +27 (0) 79 188 2826  
[sebastian@agrifoodsa.info](mailto:sebastian@agrifoodsa.info)

## COVER PHOTO

Tubestone (Pty) Ltd



## BELLY BAND

Biomin™

## LAYOUT, PUBLISHING & DISTRIBUTION

MES Consultants South Africa

Format	: B6, full-colour, glossy magazine
Frequency	: Bi-monthly
Language	: Bilingual
LSM	: 6-10
Print run	: 20 000 minimum
Readership	: 180 000
Distribution	: Nationally available at agricultural outlets (see pages 78-79 for distributors)
Read online	: <a href="http://www.agrifoodsa.info/magazine">www.agrifoodsa.info/magazine</a>



# CONTENTS

<b>FEATURES   HOOFTREKKE</b> AGRIFOODSA.INFO Distribution List	Pages 78-79	<b>DAY OLD CHICK SUPPLIERS  </b> <b>DAGOUDKUIKENVERSKAFFERS</b> Hy-Line South Africa (Pty) Ltd	Page 12
<b>FEATURED ARTICLES  </b> <b>VOORGESTELDE ARTIKEL</b> Coniglio Rabbit Meat Farm PPECB	Pages 39-41 Pages 16-17	<b>DIESEL ENGINES &amp; GENERATORS  </b> <b>DIESELENJINS &amp; KRAGOPWEKKERS</b> Kirkoskar Engines South Africa (Pty) Ltd	Page 12
<b>ACCESSORIES   BYBEHORE</b> Atlasware	Page 28	<b>ELECTRIC MOTORS &amp; DRIVES  </b> <b>ELEKTRIESE MOTORS &amp; AANDRYWERS</b> Zest Weg Group	Page 30
<b>ADJUVANTS   BYMIDDELS</b> Rolfes Agri (Pty) Ltd	Page 48	<b>ENGINEERING: PLASTIC SOLUTIONS  </b> <b>INGENIEURSWESE: PLASTIEKPRODUKTE</b> IRP Engineering Plastics	Page 02
<b>AMMUNITION   AMMUNISIE</b> Rheinmetall Denel Munition (Pty) Ltd	Page 45	<b>FENCING   OMHEININGS</b> Brits Pale F.A.R. Timbers	Page 20 Page 45
<b>ANALYTICAL LABORATORIES  </b> <b>ANALITIESE LABORATORIUMS</b> Bemlab	Page 56	<b>FERTILIZER (SPECIALITY)  </b> <b>KUNSMIS (SPESIALITEIT)</b> Rolfes Agri (Pty) Ltd	Page 48
<b>ANIMAL FEED   VEEVOER</b> Nutrifeeds Quadro Alloys Trading Enterprise cc	Page 14 Page 37	<b>FERTILIZER, LIME &amp; GYPSUM  </b> <b>KUNSMIS, KALK &amp; GIPS</b> Geysers Fertilizer & Lime cc	Page 49
<b>ANIMAL HEALTH PRODUCTS  </b> <b>DIERGEESONDHEIDSPRODUKTE</b> ANB Vet	Page 15	<b>FUEL   BRANDSTOF</b> Auto Commodities (Pty) Ltd	Page 29
<b>BOOTS   STEWELS</b> Neptun Boot	Page 32	<b>GENETICS   GENETIKA</b> ABS Genetics SA (Pty) Ltd	Page 57
<b>BRANDING   BRANDMERK</b> Ratsbrand (Edms) Bpk	Page 57	<b>GRAIN HANDLING   GRAANHANTERING</b> SBS Agri	Page 08
<b>CHEMICALS   CHEMIKALIE</b> DOW Agro Science	Pages 18-19	<b>GRAIN STORAGE   GRAANBERGING</b> GSI GSI Noordwes Damme SBS Agri	Cover Page 11 Page 54 Page 08
<b>COMMUNICATION   KOMMUNIKASIE</b> Maxwell Technology (Pty) Ltd	Page 53	<b>IMPLEMENTS   IMPLEMENTE</b> Kongskilde Agriculture Murotron (Pty) Ltd Piket Implements Quadmaster	Page 69 Page 70 Page 84 Page 68
<b>CONSTRUCTION   KONSTRUKSIE</b> Stumbelbloc Exports (Pty) Ltd	Page 44	<b>INSPECTIONS   INSPEKSIES</b> PPECB	Pages 16-17
<b>CONVEYER COMPONENTS  </b> <b>VERVOERBAND-ONDERDELE</b> IRP Engineering Plastics	Page 02	<b>INSURANCE   VERSEKERING</b> Old Mutual	Page 83
<b>COVER CROPS   DEKGEWASSE</b> Joined Specialised Farming (Pty) Ltd	Page 71	<b>INTERLOCKING BLOCKS  </b> <b>GRENDELBLOKKE</b> Stumbelbloc Exports (Pty) Ltd	Page 44
<b>CROP PROTECTION  </b> <b>GEWASBESKERMING</b> Degesch SA (Pty) Ltd - (Phostoxin) Tritof Enterprises SA	Page 10 Pages 50-51		

<b>INTERNET   INTERNET</b>		
Maxwell Technology (Pty) Ltd	Page 53	
<b>IRRIGATION   BESPROEÏING</b>		
Agriplas (Pty) Ltd	Page 55	
AQS Liquid Transfer - (Vega Pumps)	Page 46	
Netafim SA (Pty) Ltd	Page 23	
<b>LABORATORIES   LABORATORIUMS</b>		
Nvirotek Labs	Page 57	
<b>LIVESTOCK EQUIPMENT   LEWENDE HAWE TOERUSTING</b>		
Plasson SA (Pty) Ltd	Page 35	
<b>LIVESTOCK HANDLING EQUIPMENT   LEWENDE HAWE HANteringSTOERUSTING</b>		
Agritech Steelworks	Page 15	
<b>LIVESTOCK HOUSING &amp; INSOLATION   LEWENDE HAWE BLYPLEK &amp; INSOLASIE</b>		
Technopol (SA) (Pty) Ltd	Page 34	
<b>LUBRICANTS   SMEERMIDDELS</b>		
Auto Commodities (Pty) Ltd	Page 29	
<b>MACHINERY   MASHINERIE</b>		
CNC Clear Cut	Page 77	
<b>MATERIAL FLOW   MATERIAALVLOEI</b>		
Oli SA (Pty) Ltd	Page 47	
<b>PASTURE   WEIDING</b>		
Brasuda	Page 24-25	
Brasuda	Page 26-27	
<b>PLANT HIRE   VERHURING VAN TOERUSTING</b>		
IPC Projects	Page 71	
<b>PLASMA TABLES   PLASMA TAFELS</b>		
CNC Clear Cut	Page 77	
<b>POULTRY   PLUIMVEE</b>		
Cobb South Africa	Page 36	
Reliance Poultry Equipment	Page 37	
<b>POULTRY EQUIPMENT   PLUIMVEETOERUSTING</b>		
Reliance Poultry Equipment	Page 37	
<b>PRECISION FARMING   PRECISIEBOERDERY</b>		
Topcon Agriculture	Page 22	
Vantage SSA (Pty) Ltd	Page 38	
<b>PULLETS SUPPLIERS   PLUIMVEEPRODUKVERSKAFFERS</b>		
Hy-Line South Africa (Pty) Ltd	Page 12	
<b>RABBIT FARMING   HAASBOERDERY</b>		
Coniglio Rabbit Meat Farm (Pty) Ltd	Pages 39-41	
<b>RESERVOIRS   OPGAARDAMME</b>		
Noordwes Damme	Page 54	
Staalboer cc	Page 55	
<b>SAWMILLING   SAAGMEULBEDRYF</b>		
Wood Mizer Africa (Pty) Ltd	Page 21	
<b>SECURITY   SEKURITEIT</b>		
Ballistic Body Armour	Page 09	
<b>SECURITY WEAR   VEILIGHEIDSDRAG</b>		
Neptun Boot	Page 32	
Oeloff Workwear	Page 33	
<b>SEED   SAAD</b>		
United Seeds	Page 53	
<b>SILAGE   KUILVOER</b>		
Leading Edge 209 cc	Page 49	
<b>SCALES   SKALE</b>		
Scalerite	Page 52	
<b>SILOS   SILO'S</b>		
SBS Agri	Page 08	
<b>SPRAY PUMPS   SPUITPOMPE</b>		
Swartland Suijpompe	Page 71	
<b>TRAILER COMPONENTS   SLEEPWA-ONDERDELE</b>		
Burquip International (Pty) Ltd	Page 76	
<b>TRAILERS   SLEEPWAENS</b>		
Wolff Autohaus	Pages 58-59	
ZA Trucks & Trailers	Pages 60-61	
<b>TRUCKS   TROKKE</b>		
Bidco Trucks (Pty) Ltd	Page 63	
Isando Truck & Trailer Sales (Pty) Ltd	Page 62	
Kempston Commercial Centre Iveco	Page 31	
Wolff Autohaus	Pages 58-59	
ZA Trucks & Trailers	Pages 60-61	
<b>TYRES   BANDE</b>		
Firestone	Page 66	
JBH Wheels cc	Page 67	
Tire City Africa (Pty) Ltd	Page 67	
Tubestone (Pty) Ltd	Cover	
Tubestone (Pty) Ltd	Pages 64-65	

# CONTENTS

## VEHICLES | VOERTUIG

BB Menlyn Ford	Page 80
BB Silverton Nissan	Page 81
N1 4X4	Page 82

## WATER SANITATION | WATERSANITASIE

Tritof Enterprises SA	Pages 50-51
-----------------------	-------------

## WATER STORAGE | WATERBERGING

Noordwes Damme	Page 54
Staalboer cc	Page 55

## WATER TANKS | WATERTENKS

Noordwes Damme	Page 54
----------------	---------

## WEAPONS | WAPENS

Rheinmetall Denel Munition (Pty) Ltd	Page 45
--------------------------------------	---------

## WEIGHING INDUSTRY | WEEGINDUSTRIE

Loadtech Load Cells	Page 31
Scalerite	Page 52

## WHEEL RIMS | WIELDOPPE

JBH Wheels cc	Page 67
---------------	---------

## WINDMILL EQUIPMENT | WINDPOMPTOERUSTING

Jooste Suier & Pomp	Page 31
---------------------	---------

## WOOD CHIPPERS | HOUTKLIPPERS

WP Chipper Hire & Sales (Pty) Ltd	Pages 74-75
-----------------------------------	-------------

## WORK WEAR | WERKSDRAG

Neptun Boot	Page 32
Oeloff Workwear	Page 33

## MECHANISATION | MEGANISASIE

Construction | Implements | Tractors | Trailers | Trucks |  
Spares | Vehicles  
Konstruksie | Implemente | Trekkers | Sleepwaens | Trokke |  
Onderdele | Voertuie

Tubestone (Pty) Ltd	Cover
Kempston Commercial Centre Iveco	Page 31
Feeler Africa	Pages 42-43
Wolff Autohaus	Pages 58-59
ZA Trucks & Trailers	Pages 60-61
Isando Truck & Trailer Sales (Pty) Ltd	Page 62
Bidco Trucks (Pty) Ltd	Page 63
Tubestone (Pty) Ltd	Pages 64-65
Firestone	Page 66
JBH Wheels cc	Page 67
Tire City Africa (Pty) Ltd	Page 67
Quadmaster	Page 68
Kongskilde Agriculture	Page 69
Murotron (Pty) Ltd	Page 70
IPC Projects	Page 71
Joined Specialised Farming (Pty) Ltd	Page 71
Swartland Spuitpompe	Page 71
Myburgh Toerusting	Page 72
Cape Earthmoving Sales	Page 73
WP Chipper Hire & Sales (Pty) Ltd	Pages 74-75
Burquip International (Pty) Ltd	Page 76
CNC Clear Cut	Page 77
BB Menlyn Ford	Page 80
BB Silverton Nissan	Page 81
N1 4X4	Page 82
Piket Implements	Page 84

# A LONG WAY TOGETHER



ABS GENETICS SA (PTY) LTD	PAGE 57	MAXWELL TECHNOLOGY (PTY) LTD	PAGE 53
AGRIPLAS (PTY) LTD	PAGE 55	MUROTRON (PTY) LTD	PAGE 70
AGRITECH STEELWORKS	PAGE 15	MYBURGH TOERUSTING	PAGE 72
ANB VET	PAGE 15		
AQS LIQUID TRANSFER	PAGE 46	N1 4X4	PAGE 82
ATLASWARE	PAGE 28	NEPTUN BOOT	PAGE 32
AUTO COMMODITIES (PTY) LTD	PAGE 29	NETAFIM SA (PTY) LTD	PAGE 23
		NOORDWES DAMME	PAGE 54
BALLISTIC BODY ARMOUR	PAGE 09	NUTRIFEEDS	PAGE 14
BB MENLYN FORD	PAGE 80	NVIROTEK LABS	PAGE 57
BB SILVERTON NISSAN	PAGE 81		
BEMLAB	PAGE 56	OEOFF WORKWEAR	PAGE 33
BIDCO TRUCKS (PTY) LTD	PAGE 63	OLD MUTUAL	PAGE 83
BRASUDA	PAGES 24-25	OLI SA (PTY) LTD	PAGE 47
BRASUDA	PAGES 26-27		
BRITS PALE	PAGE 20	PIKET IMPLEMENTS	PAGE 84
BURQUIP INTERNATIONAL (PTY) LTD	PAGE 76	PLASSON SA (PTY) LTD	PAGE 35
		PPECB	PAGES 16-17
CAPE EARTHMOVING SALES	PAGE 73		
CNC CLEAR CUT	PAGE 77	QUADMASTER	PAGE 68
COBB SOUTH AFRICA	PAGE 36	QUADRO ALLOYS	PAGE 37
CONIGLIO RABBIT MEAT FARM	PAGES 39-41		
		RATSBRAND (EDMS) BPK	PAGE 57
DEGESCH SA (PTY) LTD - (PHOSTOXIN)	PAGE 10	RELIANCE POULTRY EQUIPMENT	PAGE 37
DOW AGRO SCIENCE	PAGES 18- 19	RHEINMETALL DENEL MUNITION	PAGE 45
		ROLFES AGRI (PTY) LTD	PAGE 48
F.A.R. TIMBERS	PAGE 45		
FEELER AFRICA	PAGES 42-43	SBS AGRI	PAGE 08
FIRESTONE	PAGE 66	SCALERITE	PAGE 52
		STAALBOER CC	PAGE 55
GEYSER 'S FERTILIZER & LIME CC	PAGE 49	STUMBELBLOC EXPORTS (PTY) LTD	PAGE 44
GSI	COVER	SWARTLAND SPUITPOMPE	PAGE 71
GSI	PAGE 11		
		TECHNOPOL (SA) (PTY) LTD	PAGE 34
HY-LINE SOUTH AFRICA (PTY) LTD	PAGE 12	TIRE CITY AFRICA (PTY) LTD	PAGE 67
		TOPCON AGRICULTURE	PAGE 22
IPC PROJECTS	PAGE 71	TRITOF ENTERPRISES SA	PAGES 50-51
IRP ENGINEERING PLASTICS	PAGE 02	TUBESTONE (PTY) LTD	COVER
ISANDO TRUCK & TRAILER SALES	PAGE 62	TUBESTONE (PTY) LTD	PAGES 64-65
JBH WHEELS CC	PAGE 67	UNITED SEEDS	PAGE 53
JOINED SPECIALISED FARMING	PAGE 71		
JOOSTE SUIER & POMP	PAGE 31	VANTAGE SSA (PTY) LTD	PAGE 38
KEMPSTON COMM. CENTRE IVECO	PAGE 31	WOLFF AUTOHAUS	PAGES 58-59
KIRLOSKAR ENGINES SOUTH AFRICA	PAGE 12	WOOD MIZER AFRICA (PTY) LTD	PAGE 21
KONGSKILDE AGRICULTURE	PAGE 69	WP CHIPPER HIRE & SALES (PTY) LTD	PAGES 74-75
LEADING EDGE 209 CC	PAGE 49	ZA TRUCKS & TRAILERS	PAGES 60-61
LOADTECH LOAD CELLS	PAGE 31	ZEST WEG GROUP	PAGE 30



Meeting your needs, Exceeding your Expectations

# Proud Suppliers of premium agricultural equipment

*Grain Storage Bins | Grain Conveyors & Elevators | Grain Dryers & Cleaners | Water Tanks | Reservoir Liners*



Telephone: +27(0)31 825 3546 | Email: [info@sbsagri.co.za](mailto:info@sbsagri.co.za) | Website: [www.sbsagri.co.za](http://www.sbsagri.co.za)



# QUALITY PROTECTION FOR OUR FARMERS



- 30 year's experience
- Commitment to quality
- Rigorous testing
- Non-stop innovation
- Purpose built products
- Excellent customer service
- Competitive pricing

# GEHALTE BESKERMING VIR ONS BOERE



- 30 Jaar se ervaring
- Toewyding tot kwaliteit
- Streng toetsstandaarde
- Voortdurende ontwikkeling
- Doelgerigte produkte
- Uitstekende kliëntediens
- Mededingende pryse



**BALLISTIC BODY ARMOUR (PTY) LTD**

ENQUIRIES : +27 (0) 11 873 9563

: +27 (0) 71 682 2830

EMAIL : [INFO@BODYARMOUR.CO.ZA](mailto:INFO@BODYARMOUR.CO.ZA)

WEBSITE : [WWW.BODYARMOUR.CO.ZA](http://WWW.BODYARMOUR.CO.ZA)

# Detia®

## DEGESCH



# BESKERM JOU WAARDEVOLLE GRAAN MET **Phostoxin**

- Beskerm u gebergde graan teen graan insekte
- Raak ontslae van rotte, molle en veldmuise
- Gebruik Phostoxin vir beroking en springhaasrotte
- Degesch is die vervaardigers van Phostoxin
- 90g en 1kg verpakkings beskikbaar
- Graanbeskerming teen insekte (Kalander)
- Sputmiddels en rotgif



**AS DIT NIE SÊ Phostoxin NIE ... IS DIT NIE Phostoxin NIE!**



HOOFKANTOOR - Tel: +27 (0) 11 974 2338 | Faks: +27 (0) 11 974 1987 | Tegniese navrae: Eddie +27 (0) 82 450 9199  
E-Pos: eddie.degesch@gmail.com | Adres: Powerstraat 10, Isando

### RAADGEWENDE AGENTE

**Ryno Botha**  
+27 (0) 82 493 3958  
Mpumalanga  
Vrystaat  
Natal  
Limpopo

**Natie Kroukam**  
+27 (0) 83 463 0244  
Noordwes  
Gauteng  
Noord Vrystaat  
Noord-Kaap

**Henchem**  
+27 (0) 82 493 7564  
Oos-Kaap  
Wes-Kaap

**Neal Gurschler**  
+27 (0) 72 587 3583  
Sub-Sahara Afrika



# THE PROFIT CENTER



## CONDITIONING:

Take advantage of early harvest premiums, reduce yield loss and save money by drying your own grain.

## MATERIAL HANDLING:

Speed through unload and get back into the field with a gentle and efficient GSI bucket elevator.

## STORAGE:

Increase marketing flexibility and capture your best price when the time is right.

Farming is never easy. It's even tougher when the market's more bust than boom. Skip the line at the elevator and plan for profit with a complete grain system from GSI.

TURN YOUR OPERATION INTO A PROFIT CENTER. VISIT [GSIAFRICA.CO.ZA](http://GSIAFRICA.CO.ZA)

STORAGE + CONDITIONING + MATERIAL HANDLING + STRUCTURES



124 Ridge Road, Laser Park, Honeydew, Ext 15, Gauteng  
P O Box 4012, Honeydew, 2040, South Africa  
Phone: +27 (011) 794 4455 | Fax: +27 (011) 794 4515  
Email: [sales@gsiafrica.co.za](mailto:sales@gsiafrica.co.za) | Website: [www.gsiafrica.co.za](http://www.gsiafrica.co.za)

# THE PROFIT CENTER



Hy-Line



**GENETIC EXCELLENCE! INVEST IN YOUR FUTURE**

**AT HY-LINE WE FOCUS ON OUR CUSTOMERS  
BY MAKING YOUR EGG BUSINESS  
MORE EFFICIENT AND PROFITABLE**

**WE SECURE YOUR FUTURE BY:**  
Offering products to meet your needs  
Delivering you the latest genetics  
Staffing our team with people to serve you better.

**Nico Conroy**  
Director - Marketing  
+27 (0) 71 485 7098

**Folkers Joubert**  
Technical Advisor  
+27 (0) 76 812 7589

MES CONSULTANTS - 082 563 4427



[www.hyline.com](http://www.hyline.com)

**HY-LINE SOUTH AFRICA +27 (0) 11 318 2355 | [sales@hylinesa.co.za](mailto:sales@hylinesa.co.za)**

# RELIABLE DIESEL ENGINES FOR:

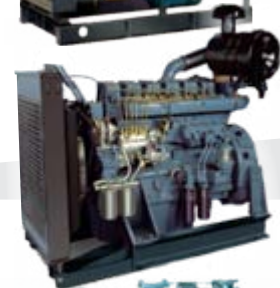
WATER PUMPS  
GENERATORS  
FORESTRY IMPLEMENTS  
MINING APPLICATIONS  
AGRICULTURAL IMPLEMENTS



HA-Series: 14.0kW to 89.0kW



R-Series: 18.5kW to 118.0kW



SL-Series: 139.9kW to 222.3kW



DV-Series: 360.0kW to 532.1kW

Agricultural Engines  
3kw to 14.8 kW

+27 (0) 11 493 3330  
kirloskar@tiscali.co.za | www.kirloskarsa.co.za

# NUTRI

FEEDS

The Formula for success

## NUTRI FEEDS INTRODUCES IT'S NEW LOOK

All of our NUTRI FEEDS product ranges have been formulated from the most cutting-edge scientific research, processes and formulations to provide you with the highest quality available.



A proud subsidiary of



**CBH** COUNTRY BIRD HOLDINGS

**SALES ENQUIRIES**  
T 018 293 0017 | E office.nutri@countrybird.co.za  
www.nutrifeeds.co.za



# ANB + VET

Vervoer Straat 7, Kya Sands, Randburg, 2169  
Tel: +27 (0) 11 704 0120 | Faks: +27 (0) 11 704 0148  
Web: www.anbvvet.co.za

**ANB VET GROOTHANDELAAR VAN  
DIEREMEDISYNE EN INSTRUMENTE**

## SPEZIALE AANBOD!

**KOOP 20 - KRY 1 GRATIS  
(ALLE PRODUKTE)**

**\*SLEGS WAAR GEEN KORTING  
REEDS VAN TOEPASSING IS NIE**



Cattle Shipping Halter



Peach Teat Easy Fit Adapter



Peach Teat Threaded Pink | Black



Peach Teat Reversible Feeder Pink



Iceman Cooling Gel 500g



Multivite 100ml



Norotrim 100ml



Madaji Milking Creams 475g



Rumix Powder 4 X 100g



Bio Vita Vitamin Mineral Supplement For Dog & Cat



Bayopet Vita Fit Supplement For Dog & Puppy



Ultratet 500ml Ultratet LA 100ml



Swamycin 100ml | 500ml



Swamycin LA 100ml | 500ml

MES CONSULTANTS - 082 647 4427

Vervoer Straat 7, Kya Sands, 2169 | Posbus 1852, Honeydew, 2040  
Tel: +27 (0) 11 704 0120 | Faks: +27 (0) 11 704 0148  
Epos: sales@anbvvet.co.za | Webtuiste: www.anbvvet.co.za

ANB VET cc (Est. 1993) Reg No. ck 1987/018974/23  
Managing Director: N.S. Botha (BPharm)

LEWER OOR DIE HELE SUID-AFRIKA  
GROOT PRODUK REEKS  
VINNIGE LEWERING

# AGRITECH STEELWORKS

## JOU VENNOOT IN LANDBOU INNOVASIE



SKAAPHEKKE  
KRUIPHEKKE  
UITKEERHEKKE  
DRUKGANG-AFKEERHEKKE  
DRUKGANG-GLYHEKKE  
DRUKGANG-UITLUGHEK  
DRUKGANG-VALHEK  
TWEERIGTING KLASHEK  
DRIERIGTING KLASHEK  
KRUIPVOER  
SELFVOERDER  
KRUIPVOERKRIP  
WATERKRIP  
BAALRINGE  
LAMWERKER (LAM DOCKING STATION)



WWW.AGRITECHSTEELWORKS.CO.ZA  
+27 (0) 84 508 1011

UNIT 3, TEE JAY STREET, BRACKENFELL, CAPE TOWN



MES CONSULTANTS - 082 647 4427

### OUR PRODUCTS



MADE TO ORDER



CATTLE



SHEEP



WEIGHING & IDENTIFICATION

Together we  
grow and  
sustain your  
business



Our passion for excellence helps you grow your business and establish yourself as a preferred supplier of perishable products.



45 Silverboom Ave  
Platteklouf, Cape Town  
7560

**Head Office**  
T +27 21 930 1134  
F +27 21 939 6868

[www.ppecb.com](http://www.ppecb.com)



# FOSTERING CONFIDENCE IN SOUTH AFRICAN PERISHABLE PRODUCE FOR OVER 90 YEARS



The Perishable Products Export Control Board (PPECB), South Africa's official certification agency for the export of perishable products, celebrates its 92nd year of existence this year.

Established in 1926 out of a need for an authority to regulate the export of perishable products, the PPECB was originally mandated to determine which shipping companies would be used for export and which perishable products would enjoy priority when assigning space aboard vessels.

Since its establishment the PPECB's role has changed dramatically, however it remains a key role-player in the export of perishable produce from South Africa. Cold chain services provided by the organisation include the inspection and approval of equipment such as containers, specialised reefer vessels and cold stores; overseeing loading processes and en-route temperature management of produce.

In addition, the PPECB has been appointed as a third party to act on behalf of the South African Maritime Safety Authority (SAMSA) to approve shippers using method 2 to verify the gross mass of a packed and sealed container. This is in line with the mandatory amendments to the International Convention for the Safety of Life at Sea (SOLAS) Chapter V1, Part A, Regulation 2 which came into force on 1 July 2016, placing a responsibility on shippers to provide the verified gross mass of a packed container to the carrier or their terminal representative prior to being loaded on board a ship.

In addition to delivering cold chain management services, since 1991 the PPECB has provided

quality inspections on perishable products destined for export. Products approved for export carry the passed for export stamp, regarded as a symbol of quality assurance to clients and consumers around the world.

Furthermore, the PPECB's food safety services ensure that food business operators comply with the standards regarding food hygiene and food safety of regulated agricultural food products intended for export. The PPECB's laboratory also provides analytical services which include mycotoxin analysis, fats analysis, dairy testing and maximum residue level testing of pesticides in a myriad of matrices.

By combining over 90 years of expertise and a range of services the PPECB seeks to enhance the credibility of the South Africa export certificate and support its customers to become the preferred suppliers of perishable products world-wide.



FOR FURTHER INFORMATION ON THE PPECB PLEASE VISIT [WWW.PPECB.COM](http://WWW.PPECB.COM) OR CALL 021 930 1134



# The Global Food Challenge

## DOW AGROSCIENCES PARTNERS WITH YOU TO:

### 1 ENABLE YOUR PROGRESS

Today's technology can help you continually improve your farm for the future. We can work side-by-side with you to help you fully realize the benefits of today's crop protection innovations and technologies.

### 2 OPTIMIZE PRODUCTION

Growers need effective and innovative tools to manage insect pests, plant diseases and weeds that can diminish your yield, damage your crops, and affect food safety. Choosing the best products keep your crops healthy, productive and profitable.



**How Dow AgroSciences  
is contributing to find  
solutions for the  
growing world**



**Dow AgroSciences**

### 3 KEEP YOUR LAND SUSTAINABLE

You want to take care of your land and your waterways to keep your farm productive for a long time, while doing your part to preserve the environment in your local community. We can help you manage resistant weeds, insect pests and plant diseases. Helping you deploy innovative management practices and support the health of your soil.



**Dow AgroSciences is a global research and development company and a leader in the agro-chemical market. We are continuously developing solutions that balance human needs with the preservation of our environment.**

**For more information please contact the registration holder:** Dow AgroSciences Southern Africa (Pty) Ltd.  
Reg. No. 1967/007147/07 • Paarl (021) 860 3620 • Pretoria (012) 361 8112 • Emergency No. 082 887 8079  
Private Bag X 160, Bryanston, 2021 • [www.dowagro.co.za](http://www.dowagro.co.za)

 [DowAgroSciencesZA](#) op Facebook

 [@DowAgroZA](#) op Twitter

 [DowAgroSciencesZA](#) op Instagram

*Solutions for the Growing World*

© <sup>TM</sup>Trademark of The Dow Chemical Company ("Dow") or an affiliated company of Dow



International  
Organization for  
Standardization



South African National  
Accreditation System



[www.britspoles.com](http://www.britspoles.com)

# VERSKAFFERS VAN CCA EN KREOSOOT BEHANDELDE PALE, LATTE & SPARRE WAT GEBRUIK KAN WORD VIR:

- Hael en skudunette
- Wingerde
- Krane en kampe
- Wilds- en beesheinings
- Wildsbomas
- Grasdakke
- Krag- en kommunikasie lyne



**Met 20 000 ton se voorraad kan ons enige bestelling groot of klein, vinnig en effektief lewer**

Meld die nommer en kwalifiseer vir 'n addisionele 5% afslag. Landbou 123

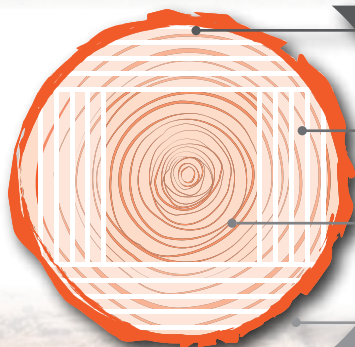
**ONS LEWER AF WÊRELDWYD. AFSLAG OP VOLUME BESKIKBAAR.  
KOOP DIREK VANAF DIE VERVAARDIGER MET MEER AS 22 JAAR SE ONDERVINDING**

Kontak Werner gerus by:

Tel: +27 (0) 12 258 9910 | +27 (0) 83 377 6464

Epos: Werner - [werner@britspale.co.za](mailto:werner@britspale.co.za)

# MAKE TIMBER A CASHCROP with a Wood-Mizer Sawmill



SLABS



Siding, Firewood  
Cooking

SAWN TIMBER



Wooden Boxes, Crates  
and Bins, Pallets, Fences,  
Decking, Timber Sales

CANT



Sawn Timber, Post  
Beams, Timber Frame

SAWDUST



Animal Bedding  
Compost, Briquettes

Wood-Mizer Africa (Pty) Ltd  
1 Leader Park, 20 Chariot Street  
Stormill Ext. 5, Johannesburg, South Africa  
Tel: +27 11 473 1313 | enquiries@woodmizerafrika.com  
www.woodmizerafrika.com

**Wood-Mizer**  
*from forest to final form*

# POWERFUL PRECISION MADE EASY...



The Topcon portfolio of precision farming products features the most advanced technology for guidance, auto steering, variable rate control, auto section control, crop canopy sensing, water management and farm data management. All designed to be user friendly and easy to use.

Topcon's lineup of precision farming consoles will help you improve operational efficiency and reduce input costs:



#### **X30 Console**

The industry's easiest to use touchscreen display with icon-based, user-definable interface.



#### **X25 Console**

Full-featured precision for price-conscious farmers – A mid-range 8.4" color touchscreen console for smaller cab environments.



#### **X14 Console**

Topcon's precision farming controller for entry level visual guidance or auto steering, offers the same look and feel of the easy-to-use X30 touchscreen.

Or contact: **Christo Helm** | +27832335497 | [chelm@topcon.com](mailto:chelm@topcon.com)

[www.topconpositioning.com](http://www.topconpositioning.com)



**NETAFIM™**

**GROW MORE WITH LESS**

**SHAPING THE FUTURE  
OF AGRICULTURE  
WITH SMART  
IRRIGATION SOLUTIONS**

Tel: +27 21 987 0477 • infoza@netafim.com • www.netafim.co.za





# WORLD WIDE LEADERS IN



#### ELEPHANT GRASS CARAJAS

- Carajas is an improved Banagras that can be established with seeds
- Selected for high dry matter production
- Quicker regrowth with higher protein
- This elephant grass has a good cold and drought tolerance
- Tasteful and digests well and used for grazing and silage making



#### PANICUM MAXIMUM - ARIES

- It is a perennial forage grass with tussocks
- Great tillering capacity
- Narrow hairless leaves and light green color
- The main characteristic of this cultivar remains on its regrowth capacity after grazing
- It is very well accepted by beef cattle, horses, sheep and goats.
- High protein with a 70% digestibility and highly palatable

**PANICUM  
MAXIMUM-**  
MOMBASA & TANZANIA

#### PANICUM MAXIMUM - MOMBASA AND TANZANIA

- High dry matter producer with excellent digestibility
- Recommended for intense grazing pastures
- Direct grazing, hay making and silage making
- Used by beef and dairy cattle producers



#### PANICUM MAXIMUM - PAREDAO

- New improved panicum variety that produces higher quality plants that produce up to 30% more than most panicum varieties
- plant have an excellent palatability with a high drought tolerance
- direct grazing and silage making
- Is recommended for milk and beef production





# TROPICAL PASTURE SEED

## BRACHIARIA BRIZANTHA- MG 4

### BRACHIARIA BRIZANTHA - MG 4

- Improved Marandu that can handle poor soil with a high drought tolerance
- Utilize direct grazing and hay making
- Good regrowth after grazing
- Cold of tolerance higher than Marandu

Brachiaria Brizantha MG-5  
MATSUDA GENETICS 5

**Victoria**

### BRACHIARIA BRIZANTHA - MG 5 VICTORIA

- Yields higher than Marandu cultivar
- Good drought resistance
- Tolerates poorly drained soils
- Good regrowth after grazing
- Very good option for the beef cattle production

## 4 GAME MIX

### 4 GAME MIX

- Improved handling through increased flow capacity of the seed
- Better protection against insects
- Better protection against seedling rot
- Extremely suitable for grass-eating wildlife

HYBRID LEGUME  
**JAVA**

### HYBRID LEGUME JAVA

- Java is a perennial twinning and creeping legume with stems
- Low demand in soil fertility
- Fixate up to 150 kg/ha Nitrogen per year
- Medium palatability which assures high persistence with high crude protein value
- Presents high persistence under grazing
- Very good seed producer setting seeds all year round



**PROFIT**  
COMES RIGHT AFTER  
THE USE OF THIS EQUIPMENT



**PATENTED**  
INPI

**SHOW**  
**FORAGE SEEDER:**

**QUALITY,  
TECHNOLOGY AND  
VERSATILITY**



**BRASUDA**  
PASTURES FOR AFRICA

**AFRICAN DISTRIBUTORS**

Lodewyk Koch: +27 (0) 84 800 8835

Office: +27 (0) 10 591 2226

[www.brasuda.co.za](http://www.brasuda.co.za)

Equipamento

# SiloFácil

Easy Silage



YEAR-ROUND QUALITY FOOD FOR THE ANIMALS

**AFRICAN DISTRIBUTORS**

Lodewyk Koch : +27 (0) 84 800 8835

Office : +27 (0) 10 591 2226

[www.brasuda.co.za](http://www.brasuda.co.za)



# ATLASWARE®

## HOT OR COLD... ATLASWARE WON'T LET YOU DOWN



FLASKS THAT STAY COOL WHEN IT'S HOT – AND VICE VERSA  
BOTTLES DESIGNED USING SPACECRAFT TECHNOLOGY

- Highly insulating layer housed between two layers of durable high tensile stainless steel
- Available in a variety of trendy colours
- Common sense sizes ideal for out –and indoor
- Use hot or cold – tested and after 36 hours the water was still hot
- Narrow to fit in school bags and light weight
- Available in 4 sizes
- Life time guarantee

THIS FLASK MAKES A GREAT GIFT AND CAN BE PERSONALIZED TO INCLUDE  
YOUR LOGO!

[www.atlasware.co.za](http://www.atlasware.co.za)



MES CONSULTANTS - 082 563 4427

To order or find out more about the Atlasware Flasks please call us on:  
Tel: +27 (0) 12 345 3108 | Email: [enquiries@atlasware.co.za](mailto:enquiries@atlasware.co.za)

Hinterland

AGRIMARK

vkb  
Landbou (Edms.) Bpk.

OUTDOOR  
WAREHOUSE  
for every adventure

trappers  
essential outdoor gear

Kloppers  
trappers

SAFARI  
OUTDOOR

..... or find your nearest shop on our website

[www.autocommodities.co.za](http://www.autocommodities.co.za)



**BUSINESSES AND FUNCTIONS**

**AUTO COMMODITIES HOLDINGS**

**FUEL**

- Import & Storage
- Wholesale & Distribution

**LOGISTICS**

- Road Transport
- Rail Transport
- Inland Warehousing & Material Handling
- Portside Warehousing & Material Handling

**ADDITIONAL SERVICE OFFERINGS**

- Tank and meter finance through Tankfin
- Debtor finance and terms for agri clients through Afagri and Grocapital
- Finance & Assets
- Alternative burning fuels through The Energy Company
- Bulk commodity handling and supply chain management through Metal Line Projects
- Alternative transport through Rail and Pipeline as well as storage and handling solutions through Phodilistics

**WE HAVE DEPOTS IN:  
 KRUGERSDORP | KIMBERLEY | KURUMAN**



MES CONSULTANTS - 082 563 4427

Call: +27 (011) 955 4571  
[andre@autocommodities.co.za](mailto:andre@autocommodities.co.za) | [info@autocommodities.co.za](mailto:info@autocommodities.co.za)

ELECTRIC SMALL SOLAR SOLUTIONS PREMIUM  
 MOTORS WORKS PIVOT CONTROL  
 MINI-NAMPO PUMP  
 ELECTRICAL SUBSTATIONS  
 CONSTRUCTION IP66 MOTOR CONTROL  
 TRAINING MOTOR ENERGY  
 TRANSMISSION POWER MOTOR PAYBACK  
 & DISTRIBUTION SUPPLY CONTROL CALCULATION  
 EXTENDED GUARANTEES ENERGY SAVING DOL DIESEL  
 TRANSFORMERS GENERATORS  
 IRRIGATION STARTER ENERGY SWITCH GEAR  
 SOLUTIONS PANELS LOW VOLTAGE SWITCH GEAR  
 ZEST ISO 9001 SOFT LEARNERSHIPS  
 ENERGY STARTERS ENCLOSURES  
 SUGAR SMOKE-EX SABS INVICTA VIBRATOR MOTORS PROJECTS  
 SECTOR MOTOR COOLING TOWER IE4 POWER WASH IP55  
 MOTORS IE4 SABS ELECTRIC MOTOR VSD  
 ALTERNATORS & CONTROL INSTRUMENTATION  
 GENERATOR SETS MOTOR BOARDS  
 TURNKEY SOLUTIONS & DRIVE SASTA  
 COMBINATIONS  
 24 HR TECHNICAL PAYBACK DEMONSTRATION  
 SUPPORT FLAMEPROOF MOTORS www.zestweg.com  
 VENTILATION CONTROL SYSTEMS CUSTOM  
 CONTAINERISED ENGINEERED  
 SUBSTATION SOLUTIONS ZEST  
 ENERGY EFFICIENCY QUALITY AFRICA WEG Group  
 DESIGN IE3 SERVICE MAINTENANCE  
 SPEED VARIABLE ENGINEERING  
 DRIVES SHAW CONTROLS CABLE & ENERGY  
 COST SAVINGS LOW VOLTAGE RACKING SUPPLY  
 CFW11 W22 SUBSTATIONS  
 IRRIGATION CONTROL SYSTEMS IE4  
 AGRIBUSINESS ENERGY SHAW CONTROLS  
 VARIABLE SPEED DRIVES  
 DIRECT ELECTRIC MOTORS W11 ALUMINIUM MOTORS  
 ON LINE SPECIALISED ELECTRICAL STOCK HOLDING WEG TRANSFORMERS AFRICA  
 STARTER PANELS  
 AGRICULTURE CFW501 AUTOMATION ENI ELECTRICAL  
 CENTRE PIVOT SOLUTIONS PAD MOUNT MOTOR EFFICIENCY DRIVES

We understand digital indicators,  
and your unique application,  
**PERFECTLY!**



Loadtech instruments have a range of locally developed process and load cell instruments from panel mount, din rails and wall mount type instruments.

Our Digital Indicator range can display process parameters such as: mA, millivolts, frequency, counting, potentiometer, even timer, real-time clock, manual analog out station and load cell applications.

We also have a range of remote displays and extra-large displays.

**Call us now for quality, locally manufactured solutions that work!**

**LOADTECH**  
LOAD CELLS  
Leaders in quality load cells & weighing technology

Tel: +27 (0)12 661 0830  
email: sales@loadtech.co.za  
www.loadtech.co.za

# JOOSTE

Cylinder & Pump Co. (PTY) Ltd  
Suier & Pomp Mpy. (Edms) Bpk  
8 Van Zyl Street, Strand, 7140  
Tel : (021) 854-6518  
Fax : (021) 854-6050

AS Cylinder

Ball Valves

GENUINE JOOSTE PRODUCTS

ALL Spares

Sub Assembly

Pipe Protectors

Spares

Hand Pumps

Foot Valves

Cylinders

Pipe Protectors

Ball Valves

Force Heads

Advice

Visit our website for more information on all our products  
[www.joostecylinders.com](http://www.joostecylinders.com)  
[info@joostecylinders.com](mailto:info@joostecylinders.com)



MERCEDES-BENZ ACTROS 4144 WITH HYDROCON 165L6 CRANE



IVECO TRAKKER 440 S/R LOW ROOF



IVECO DAILY 50C15V16 PANEL VAN



IVECO DAILY 70C15V20 PANEL VAN



OFFICIAL DEALER OF IVECO SOUTH AFRICA

Chris Jacobs: +27 (0) 82 808 8015 | Louise Mare: +27 (0) 82 469 8787  
Office: +27 (0) 11 578 4600 | [chris.jacobs@kmgf.co.za](mailto:chris.jacobs@kmgf.co.za) | [www.kempstoniveco.co.za](http://www.kempstoniveco.co.za)

# SUPERIOR PRODUCTS

## SUPERIOR PERFORMANCE



**SHOVA**



**Marina**



**strident**



**Clipper**



NEPTUN BOOT HAS BEEN SUPPLYING A RANGE OF TOP QUALITY BOOTS TO THE AGRICULTURAL AND FOOD PROCESSING INDUSTRIES SINCE 1977.

The SABS approved unisex Shova PVC boots, new Strident Camo boots, Marina ladies knee length boots, and Clipper children's calf length boots, are all hard working, hard wearing boots with excellent grip and sole support.

Neptun Boot is committed to delivering superior products, offering wearers comfort, support and protection wherever it is needed.

### INDUSTRIES



**SETTING A NEW STANDARD  
IN SAFETY FOOTWEAR**



1169AgriFoods





# Oeloff Workwear

## MANUFACTURERS OF OVERALLS

**WE SUPPLY YOU WITH ANY CUSTOMIZED  
DESIGN OF QUALITY WORK WEAR!**

### CONTI SUITS

Denim | Royal Blue (Budget) | Royal Blue  
(80/20) | Royal Blue (100%) | Navy Blue |  
Navy Blue (Flame Acid) (Sasol Spec) |  
Emerald Green | Khaki | Black |  
Olive Green | Olive Green (Acid) |  
Red | Grey

Dust Coats

Boilersuits

Denim Pants

Royal Blue Pants

Buggy Wips 1pc | 2pc | 3pc

Warning Flags Red | Green

Flame Hoodies | Scull Caps

Harry Oelofse

+27 (0) 72 355 7308

enquiries.oww@gmail.com

Address:

925 Van Der Hoff Rd

Claremont

Pretoria

[www.oeloffworkwear.co.za](http://www.oeloffworkwear.co.za)





**TECHNOPOL SA**  
ENERGY SAVING MATERIALS

# LIVESTOCK HOUSING & INSULATION

## Industry Leaders in Expanded Polystyrene Products

- Manufacturers of expanded polystyrene products for domestic and export markets
- Bulk insulation and derived thermal insulation products
- Thermal insulation products for walls, roofs, ceilings & floor application



**COST EFFECTIVE ENERGY SAVING MATERIALS  
FOR ALL OUR FARMERS NEEDS!**

Contact us for more information:  
Lammie de Beer  
Tel : +27 (0) 11 363 2780  
Cell : +27 (0) 82 443 4461



[www.technopol.co.za](http://www.technopol.co.za)

MES CONSULTANTS - 082 563 4427



# PLASSON®



Climate for Growth

## Livestock



## SUPPLY AND SERVICING OF FEEDING, DRINKING AND CLIMATE CONTROL EQUIPMENT FOR ALL POULTRY PRODUCTION OPERATIONS

### POULTRY & LIVESTOCK FARMING EQUIPMENT SUPPLIERS



- Automatic Feeders
- Nipple and Bell Drinkers
- Layer Cages
- Breeder Nests
- Skov Systems and Spares
- Wetwalls and Cooling
- Bulk Feed Silos
- Cross Augers and Feed Weighers



[www@ppa.co.za](http://www@ppa.co.za)

Tel : +27 (0) 11 708 3094  
Email : [sales@ppa.co.za](mailto:sales@ppa.co.za)



MES CONSULTANTS - 082 563 4427

# HAVE YOU MEASURED YOUR YIELD?

## The Cobb500 delivers

- More eviscerated yield than any competitor in its class
- Consistent product weight ranges
- Efficient processing performance
- Reduced product 'downgrade'
- Increased profits

## The world's most efficient broiler



[cobb-vantress.com](http://cobb-vantress.com)



ONE FAMILY.  
ONE PURPOSE.



CONTACT: **THEO BEZUIDENHOUT**

Tel: +27 (0) 12 003 1995 | Cell: +27 (0) 83 257 3025 | Fax: +27 (0) 86 681 0398 | Email: [theo@rcffoods.com](mailto:theo@rcffoods.com)  
163 Staal Street, Pretoria West, 0183, South Africa



# RELIANCE

POULTRY EQUIPMENT

Email: [sales@reliancepoultry.co.za](mailto:sales@reliancepoultry.co.za)



## COMMERCIAL POULTRY KEEPING CAGES

Multiple tiered cages available as single units or custom-built to fit requirements. Supplied complete with automated feeding-gantry or chain feeding systems. Manure removal and manure handling conveyers. Horizontal self locking gates. Standard thickness of 0.8mm and 1mm. One nipple and drip cup per partition. One 5lt header tank including float valve per tier. Wire thickness - 2.5mm. Cages are available in starter units and follower units, accommodating 100 commercial layers per two tier cage, 150 commercial layers per three tier cage and 200 commercial layers per four tier cage.

**CONTACT:**  
Johann Muller  
+27 (0) 82 561 4731

Manufacturing Excellence for Africa

MES CONSULTANTS - 082 647 4427



## Optimise your animal feed production

**Floating Fish Food & all animal feed | Full Fat Soya | Maize & Grain | Starch**

Designers & manufacturers of Hammer Mills, Extruders, Full Feed Plants, Dryers, Blenders, Coolers, Augers, all related spares and accessories

Cost effective solutions for small to large scale farmers and feed production plants.

For more information: Tel: +27 11363-3166 Cell: +27 826648682  
[info@quadroalloys.co.za](mailto:info@quadroalloys.co.za) or visit our website: [www.quadroalloys.co.za](http://www.quadroalloys.co.za)



High Quality • Minimal Wearing • Innovative Technology

**SMART FARMING MADE EASY**

- ISOBUS COMPATIBLE
- PRECISION IQ
- INTEGRATED NAVCONTROLLER



**Your Partner in Precision Agriculture**

Vantage SSA | Building C, Lakefield Office Park  
272 West Avenue | Centurion, Gauteng 0157 | South Africa  
087 357 7100 | [www.vantage-ssa.com](http://www.vantage-ssa.com)

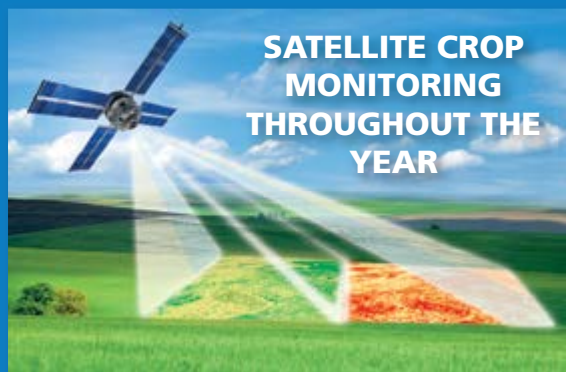


Emile Renke – West Free State, Northern Cape, North West - 084 707 6133 | Arno Roux – Technical Field Services - 082 335 6606  
Hendie Theron – East Free State, KZN, Western Cape - 078 095 0301 | Jaco Viviers – Gauteng, Mpumalanga, Limpopo - 083 310 6979

**Nationwide Dealer Network Available**



**SATELLITE CROP  
MONITORING  
THROUGHOUT THE  
YEAR**



**WHAT IS GEOSCAN?**

GeoSCAN is a program based on the integration of satellite images providing crop development and soil analysis of each individual field.

**HOW DOES GEOSCAN WORK?**

The platform allows you to conduct systematic monitoring of the entire vegetative cover by means of a vegetation index, sensitive to the chlorophyll content and the total aboveground biomass. This allows you to monitor the development of both arable crops and permanent crops.



Like and Share the Vantage SSA Facebook page and get a **FREE 60ha demonstration**



“... all of nature’s intentions.”

Rabbit meat is a wholesome alternative protein that is loved for its flavour by people all around the world.

The Rabbit Meat Industry in South Africa is in its 8th year and expanding to meet market demands abroad and to service the rapid developing local market.



# START A RABBIT FARM TODAY!

## FROM R4 000 PER PRODUCTION DOE

WE OFFER THE FOLLOWING SERVICES:

- Breeding Stock Supply
- Training and Support
- Humane Breeding Equipment
- Housing Design and Plans
- Unique Rabbit Farming Software
- 10 Year Supply Contract
- EIA Assessments (when required)
- Slaughter Capacity / Facilities
- Minimum 150 Startup Production Units
- Up to 10 000 Commercial Production Units

FOR MORE INFORMATION EMAIL US YOUR CONTACT DETAILS AND YOUR AREA OR LOCATION (PROVINCE):

John Falck : +27 (0) 71 042 8930  
 Oliver Brettschneider : +27 (0) 72 226 9694  
 Kholekile Mbanga : +27 (0) 82 997 2657  
 Pieter Keyser : +27 (0) 83 480 0971

Website : [www.coniglio.co.za](http://www.coniglio.co.za)  
 Email : [info@coniglio.co.za](mailto:info@coniglio.co.za)

MES CONSULTANTS - 082 565 4427



# CONIGLIO RABBIT MEAT FARM BROWSING EXPERIENCE FOR

[www.coniglio.co.za](http://www.coniglio.co.za)

If you are interested in rabbit farming you are at the right place when you visit our new site. Coniglio Rabbit Meat Farms specialises in stimulating a supply of quality rabbit meat products mainly for export and specific local markets. Please feel free to gather some more insights while browsing around or visit this link <https://goo.gl/FMhwak> for our full farming information pack; OR send an email to [info@coniglio.co.za](mailto:info@coniglio.co.za) for a structured approach.

## STEP 1

**REQUEST INFORMATION ABOUT RABBIT FARMING OPPORTUNITIES IN SOUTH AFRICA...**

- Send an email to [info@coniglio.co.za](mailto:info@coniglio.co.za) expressing your interest in rabbit farming
- Supply your full name, contact number and the province you intend to farm in
- We will reply with the background and insights required to review the activities

## STEP 2

**ARRANGE A MEET AND GREET AT A FACILITY...**

- Contact us at [info@coniglio.co.za](mailto:info@coniglio.co.za) after you have reviewed the requested information
- Make an appointment to visit one of our facilities
- Meet with a farmer and experience a rabbit farming operation
- Evaluate building requirements and have an opportunity to ask questions related to farming operations
- Decide whether rabbit farming is for you

## STEP 3

**BOOK YOUR CONTRACT TRAINING COURSE...**

- Contact us after or before your visit and reserve your seat for a training day by sending us proof of payment to [info@coniglio.co.za](mailto:info@coniglio.co.za)
- We will confirm your seat and send you a tax invoice
- We will forward you an electronic copy of the training manual for your preparations, preparing your contract for signature and finalise your quota(s)
- Look at your housing requirements and finalise your layout

## STEP 4

**FINALISE YOUR EQUIPMENT ORDER AND START PREPARING YOUR RABBITRY...**

- After you have reviewed the information supplied and have visited a facility you will have a good understanding thereof and would be able to indicate the size of operation you would like to set up
- You can finalise your order before or after the training by sending us proof of payment to [info@coniglio.co.za](mailto:info@coniglio.co.za)
- We will confirm your order and send you a tax invoice
- We will place your equipment orders and manufacturing will commence
- After 60 to 90 days your housing structure should be ready and we will deliver your equipment in stages after which you will commence with setting up your rabbitry
- When completed you will collect your breeding stock from the closest facility
- We will assist with a phased approach to start up your operations, and support and assistance will be in place for the remainder of your contract
- We will eagerly await your first delivery

**CONTACT US VIA EMAIL AT [INFO@CONIGLIO.CO.ZA](mailto:INFO@CONIGLIO.CO.ZA) SHOULD YOU REQUIRE PERSONAL ASSISTANCE, AND WE WILL CALL YOU**





# HAS CREATED A COMPLETE NEW FOR OUR CONIGLIO FARMERS

Our website is dedicated to rabbit farming activities and provides background and current operational insights

## PREREQUISITES TO FARM

- Agriculturally zoned land
- A building or structure to house your animals
- Infrastructure (security, water and electricity)
- Rabbit farming / breeding equipment
- Breeding stock (production do's and commercial bucks)
- Farming Contract
- A person to take care of the farming operations (farmer)
- One labourer for every hundred production animals
- Transport to deliver your livestock to the rabbittoir or pickup point
- Commercial pelleted feed for rabbits and / or primary produced feed
- An Environmental Impact Study (if required)



## POPULAR AROUND THE WORLD

Rabbit meat is produced and consumed all over the world is famous in many European, African and Asian communities. In some countries, it is a delicacy, and for some, it is as ordinary as chicken and an every day consumed protein.

It should be a bit of a surprise that it is the fifth most slaughtered animal in the world, outnumbering lamb, beef and goat, just three of the most popular proteins to the African continent except chicken, of course.



## NO SPECIAL COOKING SKILLS REQUIRED

Special culinary skills are NOT required when cooking with rabbit meat and like with any other meat products only basic portioning and cooking knowledge is required.



## NEW

We have also created a complete new browsing experience for our Rabbit Meat Buyers at [www.buyrabbitmeat.co.za](http://www.buyrabbitmeat.co.za).

This site is dedicated to rabbit meat products and showcase various rabbit products promoting the culinary experience around cooking with rabbit meat.

Coniglio Rabbit Meat Farms specialises in stimulating the supply of quality rabbit meat products mainly for export and specifically targeted local markets.

READ MORE ON OUR BRAND NEW SITE [WWW.BUYRABBITMEAT.CO.ZA](http://WWW.BUYRABBITMEAT.CO.ZA)

**FEELER**

— **TLB BACKHOE** —

**LOADERS**

 **BULL**



## HD 60

**CARRARO** synchroshuttle transmission



**120 LPM**  
hydraulic flow

**2.96 m**  
dump height

**7178 Kgf**  
bucket break-out force

**3.39 m**  
load over height

## HD 96

**CARRARO** synchroshuttle transmission



**134 LPM**  
hydraulic flow

**2.96 m**  
dump height

**8183 Kgf**  
bucket break-out force

**3.61 m**  
load over height

Francois Giesel  
082 753 6633

francois@feeler africa.co.za

Steve du Plooy  
076 541 8576

steve@feeler africa.co.za

BD Terblanche  
082 550 7813

BD@feeler africa.co.za

[www.feeler africa.co.za](http://www.feeler africa.co.za)

38 Rokewood Street, Pomona, Kempton Park, 1619

# FEELER WHEEL LOADERS



**HD 916**

**1.6 TON**



**HD 912**

**1.2 TON**



**HD 930**

**3 TON**



**HD 920**

**2 TON**



**HD 950**

**5 TON**

Francois Griesel  
082 753 6633  
francois@feelerafrica.co.za

Steve du Plooy  
076 541 8576  
steve@feelerafrica.co.za

BD Terblanche  
082 550 7813  
BD@feelerafrica.co.za

[www.feelerafrica.co.za](http://www.feelerafrica.co.za)  
38 Rokewood Street, Pomona, Kempton Park, 1619



# STUMBELBLOC

WWW.STUMBELBLOC.COM

**MAKE YOUR OWN BLOCKS!**  
Build walls for as little as R140/m<sup>2</sup>

## HOW IT WORKS



## HOUSES



## DAMS



## WENDY HOUSES



## SWIMMING POOLS



## STORM DRAINS



## SCHOOLS



Visit our website: [www.stumbelbloc.com](http://www.stumbelbloc.com)

Andre: +27 (0) 83 228 8036 | [andre@stumbelbloc.com](mailto:andre@stumbelbloc.com)



# F.A.R. TIMBERS

[www.fartimbers.co.za](http://www.fartimbers.co.za)

## MANUFACTURERS OF TURNED PINE POST & RAIL FENCING & JUMPING POLES



- All material are SABS approved
- Pressure treated against rot and insect damage with CCA
- Once installed painted with a good quality exterior wood treatment or paint to minimise the effects of weathering on the timber



**ROD FREEZE:**  
 +27 (0) 33 503 1963  
 +27 (0) 82 573 4544  
[rod@fartimbers.co.za](mailto:rod@fartimbers.co.za)

## SMOKELESS PROPELLANT FOR RELOADING

Available at all major gun dealers



- S 121** Extremely fast burning spherical for shot and handguns
- MS 200** Extremely fast burning extruded for shot and handguns
- MP 200** Fast burning extruded for shot and handguns
- S 221** Medium burning spherical for revolvers and pistols
- S 265** Slow burning extruded for magnum revolvers
- S 321** Fast burning spherical for rifles
- S 335** Medium burning extruded for rifles
- S 341** Medium burning spherical for rifles
- S 355** Medium burning extruded for rifles
- S 365** Slow burning extruded for rifles
- S 361** Slow burning spherical for magnum rifles
- S 385** Slow burning extruded for magnum rifles

**RHEINMETALL DENEL MUNITION**  
**SOMCHEM POWDERS**

Helpline: (021) 850 2448  
 National Sales: (021) 850 2541  
 e-mail address: [reload@somchem.co.za](mailto:reload@somchem.co.za)



# VEGA PUMPS

*Making sure your crop  
stays irrigated this summer*



[www.vegapumps.co.za](http://www.vegapumps.co.za)

012-548 7204 / [utilitysales@aqsl.co.za](mailto:utilitysales@aqsl.co.za)

Available in stores and branches nation wide.

To view our video use the QR Code above or go to the following link: <https://youtube/ITZLzm-Gmbw>

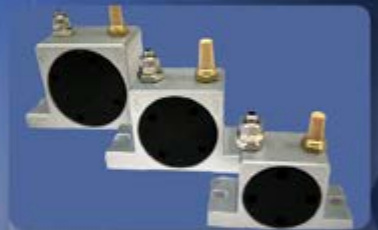


## OLI VIBRATORS

EFFICIENT DISCHARGE SOLUTIONS

# DESIGNED FOR AGRICULTURE

- PRODUCT FLOW AID'S: HOPPERS, BINS, SILO'S & CHUTES
- VIBRATING SCREEN APPLICATIONS



## OLI OFFERS TECHNICAL ADVICE WITH PRODUCT SIZING & ONSITE INSTALLATION ASSISTANCE

### OLI'S PRODUCT RANGE INCLUDES:

- Electric motor vibrators
- Pneumatic linear & rotary vibrators
- Aerators
- Hydraulic vibrators





BUFFERING SYSTEM



WETTING/SPREADING



COMPLEXING OF SALTS



HUMECTANT



# AQUA-RIGHT®

AQUA-RIGHT is a registered trademark of Rolfes Agri (Pty) Ltd. AQUA-RIGHT® 3 Reg. No L6896 Act No. 36 of 1947, AQUA-RIGHT® 5 Reg. No L6205 Act No. 36 of 1947, AQUA-RIGHT® 7 Reg. No L6895 Act No. 36 of 1947

**AQUA-RIGHT® is a water-soluble buffer for specific use with those agricultural chemicals whose optimal performance in spray water requires a pH of 3, 5 or 7. It also contains a wetting agent and humectants.**

## WHY USE THE AQUA-RIGHT® - SERIES?

The AQUA-RIGHT®-series generates a stable environment at the chosen pH for agrochemicals, it increase the uptake of systemic pesticides due to the wetting quality.

- AQUA-RIGHT® 3, 5 and 7 are true buffers.
- AQUA-RIGHT® 3, 5 and 7 can increase or decrease the pH of the spray water and keep it at the chosen pH.
- AQUA-RIGHT® 3, 5 and 7 creates a stable environment, at the chosen pH, for the agrochemical.
- AQUA-RIGHT® 3, 5 and 7 prevents alkaline as well as acidic hydrolysis of agrochemicals.
- AQUA-RIGHT® 3, 5 and 7 contains a wetting agent.
- AQUA-RIGHT® 3, 5 and 7 contains humectants.
- AQUA-RIGHT® 3, 5 and 7 also improves the compatibility of the pesticides in the spray tank.
- AQUA-RIGHT® 7 eliminates salt antagonism in the salt solution.



### Product Categories:

Adjuvants  
Herbicides  
Fungicides  
Insecticides

Speciality Crop Nutrition:  
Suspension Concentrates  
Water Soluble Fertilisers  
Chelated Micro Elements

Sanitizers  
Nematicides  
Seed Treatments  
Soil Conditioners

Rolfes Agri (Pty) Ltd • (Reg. No. 1998/013411/07) • Tel: +27 (0) 12 803 0145  
Visit our website and/or download our Rolfes Agri App for a complete list of products.



Download our  
Rolfes Agri App



Like us on  
Facebook



Visit our website:  
[www.rolfesagri.co.za](http://www.rolfesagri.co.za)





### SUPPLIER & DISTRIBUTOR OF:

- Dolomitic & Calcitic Lime – bulk and bags
- Gypsum – bulk and bags
- Granulated Fertilizer & Fertilizer Blends

We strive for excellence in our after-sales service

- All products are registered
- Transport done at competitive rates
- We supply Kwa-Zulu Natal, Eastern Cape and Southern Free-State regions



#### Contact

Gaynor : +27 (0) 31 207 6763 – [geysers@telkomsa.net](mailto:geysers@telkomsa.net)  
 Warren : +27 (0) 83 255 2070 – [warreng@idsinternet.co.za](mailto:warreng@idsinternet.co.za)

MES CONSULTANTS  
082 983 4428



## Can you afford to throw away feed?

Oxygen is the enemy of silage, causing significant dry matter loss and spoilage, year after year. Only SILOSTOP® - The Ultimate Oxygen Barrier Film is proven by university research and backed by years of satisfied farmer experience.

- Retain up to 100% more dry matter and nutrients over any other silage cover
- Improve aerobic stability by up to 2.5 days



Andries Engelbrecht: 083 263 9675  
 Werner van der Merwe: 083 700 2333



# BIOFILM

## IN DRINKING WATER



TREATED WITH CHLORINE



TREATED WITH PEROXSIL™ Ag+

VIEW THE POULTRY AND DOSAGE BROCHURE ON OUR WEBSITE

[www.peroxsil.com/images/pdf/Poultry\\_Dosage\\_Directions.pdf](http://www.peroxsil.com/images/pdf/Poultry_Dosage_Directions.pdf)



Distributed Nationally by:  
Immuno-Vet Services  
+27 (0) 11 699 6240 (JHB)  
+27 (0) 33 345 5679 (PMB)  
+27 (0) 21 982 2652 (CPT)



# PEROXSIL™ Ag+

## BENEFITS OF USING PEROXSIL™ Ag+

- ✓ Lower mortality rates
- ✓ Reduces antibiotic burden
- ✓ Improved daily weight gain
- ✓ Improves feed conversion ratio
- ✓ Unprecedented biofilm removal
- ✓ Improved profits and performance
- ✓ Improved health and immune system

Peroxsil™ Ag+ is a safe non-toxic powerful silver stabilised Hydrogen Peroxide water sanitiser that biodegrades to oxygen and water.

Highly effective in the removal of biofilm contamination, in water delivery systems ensuring total disinfection. Can also be used while birds are present.

Constant dosing of water lines on a 30 000 bird house costs less than R350 per month. Removing biofilm removes 99% of all micro-organisms resulting in clean safer water.

Under optimal conditions, 2 micro-organisms will multiply to over a billion in 13 hours, yet Peroxsil™ Ag+ effectively kills both gram positive and negative bacteria within minutes.



+27 (0) 11 706 7946 | [info@tritof.co.za](mailto:info@tritof.co.za)  
[www.peroxsil.com](http://www.peroxsil.com)

MES CONSULTANTS - 082 563 4427

USE PROMO CODE:  
SCALES4U2  
TO QUALIFY FOR A  
DISCOUNT

# SCALERITE

"WE LEAD THE WEIGH"

## MICRO CATTLE SCALE

2000KG  
L:3.2M H:2.9M W:2M



## MICRO DIGITAL CRANE SCALE

300KG



## MICRO SHEEP/PIG SCALE

1000KG  
L:1.24M H:1.12M W:0.7M



## MICRO WEIGHBARS

2000KG  
Bars: 1000mm x 180mm



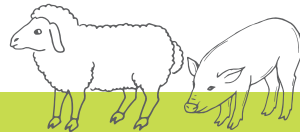
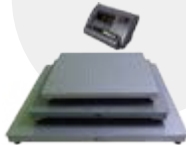
## MICRO DIGITAL PLATFORM SCALE

300KG  
VARIOUS PLATFORM SIZES



## MICRO INDUSTRIAL PLATFORM SCALE

VARIOUS PLATFORM SIZES  
3000KG



WWW.SCALERITE.CO.ZA  
SALES@SCALERITE.CO.ZA  
6 MAIN REEF ROAD, BENROSE, GAUTENG



SCALERITE

011 618 2554  
0861 SCALES

# UNITED SEEDS

## BEPROEFDE MIELIE KULTIVARS BESKIBAAR LANDWYD

### Geel Kultivars

US 9610  
 US 9612  
 US 9614  
 US 9616 (nuut)  
 US 9620  
 US 9680BR (nuut)  
 US 9682R (nuut)  
 USL 9690R  
 USL 9696R  
 US 9800 (kuilvoer)

### Wit Kultivars

US 9721 (nuut)  
 US 9723 (nuut)  
 US 9777  
 US 9737 B (nuut)

### AGENTE

Middelburg:	Ignus Gouws	066 245 5154
Ohrigstad:	Dewald Eis	079 526 2519
Delmas:	Org Vermeulen	083 227 8326
Vrede:	Machiël Engelbrecht	071 675 0885
Bethlehem:	Dr Francois du Toit	083 630 2645
Ladybrand:	Lourie Prinsloo	083 305 2043
Pretoria:	Niel Pretorius	083 306 4439
Brits/Standerton:	Cobus Meintjies	082 448 4313
Carletonville:	Linda Nel	074 078 2787
Meyerton:	Hannes De Klerk	072 993 5815
Limpopo:	Jan du Toit	082 802 5888
Noordwes:	Koos Pieterse	082 940 6321
Noordwes:	Henna Hertzog	082 712 1011
Bethal/Hendrina:	Tienie Von Wielligh	082 550 8094
Newcastle:	Barry Brummer	084 707 6762
Senekal:	Jan Rossouw	082 770 2845
Lindley:	Hilgard Müller	082 824 3654
Ladybrand:	Lourie Prinsloo	083 305 2043
Petrusburg:	Tjaart Venter	083 257 4847
Natal:	Duncan Little	083 781 6691
Natal:	Rijk Neethling	082 712 1011
Weskaap:	Stephan Lambrechts	082 666 5152
Suidkaap:	Bertus Joubert	060 993 5204
Hoofkantoor:	James Wickens	083 230 8444
Bemarking:	Wykie van der Merwe	083 287 3699

### Kontak ons

Tel: 012 819 8128 | Sel: 083 230 8444  
[www.unitedseeds.co.za](http://www.unitedseeds.co.za)



\*Roundup Ready, Yieldgard II en TELA is geregistreerde handelsmerke van Monsanto Technology LLC

# Satellite broadband internet

Reliable Internet, no matter where you live!



- Reliable, fast and guaranteed connectivity **anywhere** in SA
- **Fast** Internet for browsing the Internet, Skype and e-mails.
- **Always-on** Internet!
- Capped & **Uncapped** data packages available at speeds of up to 15 Mbps.
- **No limits** on daily data consumption.
- **No need for phone lines.**
- **Now also provides Wireless LTE, Business Fiber and Business Wireless Solutions.**

Now available- Approved Cell Phone Booster



All Networks



+27 (0) 12 940 0660 | [www.maxwell.co.za](http://www.maxwell.co.za)



### DIY DAMS ALSO AVAILABLE | 10 YEAR WARRANTY

ZincAl tanks suitable for human consumption

Supplied with a certificate

4 x 2.3 m Zinc Tank (29 kl)	- R 18 000	8 x 2.3 m Zinc Tank (116 kl)	- R 45 500
6 x 2.3 m Zinc Tank (65 kl)	- R 30 600	15 x 2.3 m Zinc Tank (406 kl)	- R 142 700

#### PRICES INCLUDE:

Roof | ZincAl | Liner | 50 mm Outlet | 40 mm Overflow | Installation and VAT. Transport not included

### ZincAl and grain dams

4 x 2.3 m Zinc dam (29 kl)	- R 13 150	8 x 2.3 m Zinc dam (116 kl)	- R 28 300
6 x 1.55 m Zinc dam (44 kl)	- R 15 700	12 x 2.3 m Zinc dam (261 kl)	- R 57 500
6 x 2.3 m Zinc dam (65 kl)	- R 20 500	14 x 2.3 m Zinc dam (354 kl)	- R 76 000

#### PRICES INCLUDE:

ZincAl | Lining | 50 mm Outlet | 40 mm overflow | Installation and VAT. Transport not included

### ZINCAL DAMS



Reservoirs  
up to 522 kl

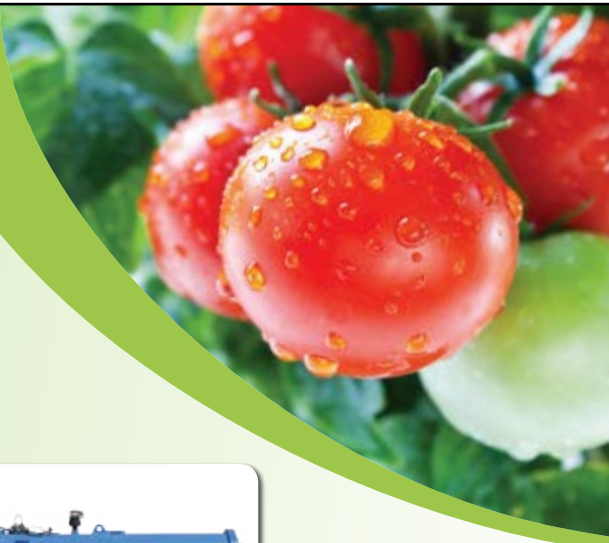
### EARTH DAMS



HDPE liners  
available

Any size ZincAl dam, grain dam, ZincAl tank or lining can be manufactured on request. 0.8 to 1.2 mm ZincAl sheets with a life expectancy of 2 to 4 times longer than that of traditional sheets are used. 850 GSM PVC linings are manufactured with the aid of a high-frequency welding process. Linings are UV resistant. Material of the same thickness is used for the walls and the floor. Should the thickness differ, you get your lining free.

## Perfekte oplossings in besproeiingsbestuur



Doen navraag by jou naaste besproeiings handelaar oor Agriplas Produkte

[www.agriplas.co.za](http://www.agriplas.co.za)



**KAAPSTAD - Hoofkantoor**  
Posbus 696, Brackenfell 7561  
Tel: +27 21 917 7177  
Faks: +27 21 917 7200

**GAUTENG**  
Posbus 11052, Randhart 1457  
Tel: +27 11 908 2204  
Faks: +27 11 908 5312

**MPUMALANGA**  
Suite 63, Postnet X 11326, Nelspruit 1200  
Tel: +27 13 755 3510  
Faks: +27 13 755 3505



# STAALBOER

QUALITY PRODUCTS AT AFFORDABLE PRICES  
DELIVERY & CONSTRUCTION NATIONWIDE!

## STEEL PANEL DAMS

- ▶ 15Kl to 4 000Kl Capacity
- ▶ Heights of 1.3m, 1.9m, 2.5m, 3.1m, 3.7m and 4.9m
- ▶ Easy transport and erection
- ▶ Steel dome or shade net roofs
- ▶ 30 years life expectancy

## TANK STANDS

- ▶ 1.5m to 12m for
- ▶ 5Kl and 10Kl tanks
- ▶ Engineers certificate on structures
- ▶ Bolted construction for easy transport and erection



MES CONSULTANTS - 082 853 4427

+27 (0) 82 210 0999 > [jan@staalboer.co.za](mailto:jan@staalboer.co.za) > [www.staalboer.co.za](http://www.staalboer.co.za)

## OMVATTENDE ANALITIESE DIENS VIR LANDBOUERS

Bemlab verskaf 'n betroubare ontledingsdiens en tegniese ondersteuning aan ons kliënte sodat hulle die beste besluite kan neem

Kenmerke wat Bemlab 'n leidende diensverskaffer maak:

- **Betroubare resultate:** ISO 17025 akkreditasie vir grond-, blaar-, water- en vrugontledings
- **Monsternemingsdiens:** Landboukundiges en ander kundiges wat grondkartering doen
- **Tegniese ondersteuning:** Aanbevelings en tegniese advies word op aanvraag verskaf
- **Gerieflikheid:** Spesiale monstersakkies en gerieflike vervoeropsies van oral in die land word kosteloos aangebied
- 'n **Omvattende ontledingsdiens:** Fulvien- en humienuurontledings, plantpatologie, aalwurmontledings asook grondmikrobiologie word verskaf
- **Kliëntediens:** 'n Kombinasie van vriendelike ontvangspersoneel, 'n toegewyde span en spoedige omdraaiing, verseker kliënte-tevredenheid
- **Goeie pryse:** Koste word fyn bestuur sodat kliënte die waarde wat gereelde analyses toevoeg, kan benut

Besoek ons webtuiste, of kontak ons  
[www.bemlab.co.za](http://www.bemlab.co.za)  
[admin@bemlab.co.za](mailto:admin@bemlab.co.za)  
Tel: +27 (0) 21 853 1490



T0654

Part of the  PathCare group of companies







Kontak Almi by 084 581 1559

### 12V BRANDYSTER



BRANDYSTER  
MET VASTE  
KOP

MULTI-  
LOSLETER  
BRANDYSTER

Die bordjies kan  
individueel binne oomblikke  
omgeruil word. Ook in liniere  
vorm beskikbaar.

### 12V HORING- BRANDER



### 12V STERTKNIPPER RATSKNIP

Gemaak van vlekvrige  
staal met 'n geelkoper lem waarin  
die element is.



Die naam  
sê alles, dit sit  
soos 'n klits aan dis kalf se kop



PROFIT FROM GENETIC PROGRESS

ABS South Africa  
www.absglobal.com/south-africa  
ABS.ZA.Info@genusplc.com  
Tel: 021 975 4191



## WEES 'N INGELIGTE LANDBOUER



Ons onafhanklike, wêreldklas laboratoriums bied ontledings van:

- Gronde
- Water
- Veevoer en Weiding
- Kunsmis en Kalk
- Groeimediums
- Kompos
- Plante en Petiole
- Residue van landbou chemikalieë
- Verwerkte en vars produkte vir mikrobiiese kontaminasie

NviroTek, met bewese ervaring in landbou-laboratoriumtegnieke, bied hierdie analitiese dienste regoor Suider Afrika aan.

Kontak ons ervare personeel vir meer inligting:

- |                      |  |
|----------------------|--|
| Kantoor              | : +27 (0) 12 252 7588                                  |
| Georgie Johnson      | : +27 (0) 82 889 0138<br>Voere, plante & kompos        |
| Francois Reeders     | : +27 (0) 82 889 0133<br>Gronde, kalk, kunsmis & water |
| Des Liebenberg       | : +27 (0) 71 624 1593<br>MRL'e op uitvoervrugte        |
| Wynland Laboratorium | : +27 (0) 21 873 3514<br>Mikrobiologiese toetse        |

www.nviroteklabs.co.za | www.wynlandlab.co.za

183 CONSULTANTS - 021 447 1471

J-P: 083 263 4220 | [jp@wolffautohaus.co.za](mailto:jp@wolffautohaus.co.za)  
 Victor: 062 538 0476 | [victor@wolffautohaus.co.za](mailto:victor@wolffautohaus.co.za)  
 Dick: 072 731 0463 | [dick@wolffautohaus.co.za](mailto:dick@wolffautohaus.co.za)  
 011 662 2828 | [www.wolffautohaus.co.za](http://www.wolffautohaus.co.za)  
 Cnr. Hendrik Potgieter (M47) & N14 (R28) Krugersdorp



**WOLFF AUTOHAUS**  
 COMMERCIAL VEHICLE REBELLERS

**WWW.WOLFFAUTOHAUS.CO.ZA**

**R395,000+VAT**



2012 Iveco 480 Stralis 6x4 Truck Tractor.

**R285,000+VAT**



2008 Nissan UD290 4x2 Truck Tractor.

**R495,000+VAT**



2013 MAN TGS 26-480.

**R395,000+VAT**



2007 Scania R480

**R545,000+VAT**



2007 Scania Top Line Double Diff Truck Tractor on Air Suspension.

**R750,000+VAT**



2013 Mercedes Benz 3344 6x4 Truck Tractor fitted with Aerokit.

**R785,000+VAT**



2015 Iveco 440 Trakker 6x4 Truck Tractor.

**P.O.A**



3x 2015 Iveco 420 Trakker 6x6 LWB Chassis Cab.

**R515,000+VAT**



2006 Nissan Diesel UD290 Compactor, 19m³.

**R225,000+VAT**



2012 Isuzu NPR400 Volume Van, 250,000km.

**R435,000+VAT**



2009 Toyota Dyna 7.145 fitted with Galileo 12 Cherry Picker.

**R325,000+VAT**



2010 TATA 1518 fitted with Palfinger PK10000 Hydraulic Crane.

J-P: 083 263 4220 | [jp@wolffautohaus.co.za](mailto:jp@wolffautohaus.co.za)  
 Victor: 062 538 0476 | [victor@wolffautohaus.co.za](mailto:victor@wolffautohaus.co.za)  
 Dick: 072 731 0463 | [dick@wolffautohaus.co.za](mailto:dick@wolffautohaus.co.za)  
 011 662 2828 | [www.wolffautohaus.co.za](http://www.wolffautohaus.co.za)  
 Cnr. Hendrik Potgieter (M47) & N14 (R28) Krugersdorp



# WOLFF AUTOHAUS

COMMERCIAL VEHICLE RESELLERS

## WWW.WOLFFAUTOHAUS.CO.ZA

R495,000+VAT



2007 FUSO FY26-310 10m³ Tipper.

R295,000+VAT



2009 Mercedes Benz 1517 Atago 6m³ Tipper.

R875,000+VAT



2016 Hino 2838 700 Series 10m³ Tipper.

R695,000+VAT



2015 MAN CLA 26.200 LWB fitted with 16,000L Water Tank.

R345,000+VAT



2014 & 2015 Afrit Side Tipper.

R285,000+VAT



2009 8DJ Bodies Tri Axle Stepdeck with Twistlocks and Pedestal.

R795,000+VAT



2016 Cat 428F 4x4 Backhoe Loader.

R395,000+VAT



2010 CAT 422E 4x2 Backhoe Loader 9296hrs.

R595,000+VAT



2011 Dynapac C280A Compaction Roller. Full Cab.

R250,000+VAT



BUSAF Personnel Carrier. 76 Seater.

R725,000+VAT



2009 Hino 15-258 500 Series 60 Seater Commuter Bus.

R625,000+VAT



2017 Mercedes Benz S19 Sprinter Bus with 22 Seats & Roof Mount Aircon.

WesBank

SELLING YOUR TRUCK OR TRAILER? CONTACT US NOW! | Trade-ins welcome | We are a registered exporter | All prices exclude VAT | Like us on





## TRUCKS & TRAILERS

— YOUR ONE STOP SOLUTION —



2007 UD TIPPER 290. 350 000KM  
FULL SERVICE HISTORY. 10M3 TIPPER  
R475 000.00 EXCL VAT



2008 UD TIPPER/DROP SIDE, LOW MILEAGE,  
VERY GOOD CONDITION  
R345 000.00 EXCL VAT



IMAGE WA0020: 26/28 MERCEDES BENZ  
16000L WATER TANKER, GOOD CONDITION  
R245 000.00 EXCL VAT



2008 ISUZU FVZ 1400 - 10M3 TIPPERS  
MILEAGE BELOW 120 000KM. 2 UNITS AVAILABLE  
R425 000.00 EXCL VAT



1994 MERCEDES BENZ POWERLINER 26/35  
WITH 8 TON CRANE AND HYDRAULICS  
R300 000.00 EXCL VAT



TEREX 4X4 TLB 2008 AND 2009 MODELS  
AVAILABLE 5900 AND 6500 HOURS  
R295 000.00 EXCL VAT



SCANIA R500. MILEAGE: 650 000KM.  
4 UNITS AVAILABLE.  
STARTING FROM R550 000.00 EXCL VAT



**MERCEDES BENZ ACTROSS  
26/50 AND 26/44. FULL SERVICE HISTORIES.  
3 UNITS AVAILABLE - R465 000.00 EXCL VAT**



**2006-2008 MERCEDES BENZ ACTROS  
26/48 AND 26/50. FULL SERVICE HISTORIES.  
4 UNITS AVAILABLE - FROM R310 000.00 EXCL VAT**



**2008 LONG GONG ZL 50 EFK FRONT END LOADERS  
WITH CAT ENGINES AND ZF TRANSMISSIONS  
3 UNITS AVAILABLE - FROM R285 000.00 EXCL VAT**



**CASE 4X4 TLB 2011 9500 HOURS  
R425 000.00 EXCL VAT**



**2008 SA TRUCK BODIES SIDE TIPPER LINK  
45 M3 EXCELLENT CONDITION  
R225 000.00 EXCL VAT**



**SATB SIDE TIPPER LINK 45CUBE EX FLEET TRAILER  
R265 000.00 EXCL VAT**



**2014 CTS TAUTLINER SUPERLINK, NEW  
TARPS, TYRES, BRAKES, ROOF AND POLES  
R350 000.00 EXCL VAT**



**2006 TOP TRAILER LINK, GOOD CONDITION  
R175 000.00 EXCL VAT**

**ALL TRUCKS & TRAILERS IN EXCELLENT CONDITION**



Cnr Barbara & Trek Street  
Elandsfontein  
+27 (0) 11 974 1931  
+27 (0) 11 974 1934  
[www.isandotruck.co.za](http://www.isandotruck.co.za)



2009 NISSAN UD100 CATTLE BODY  
378 914 KMS



2015 HINO 500 1626 6 X2 FRIDGE TRUCK  
MT450 243 932 KMS



2015 NISSAN CW 26 370 FRIDGE TRUCK  
MT450



MERC BENZ 1318 VAN BODY WITH TAILLIFT  
312 018 KMS



2015 RAPID DRAWBAR TRAILER FRIDGE



2009 TRAILSTAR TANDEM CATTLE  
TRAILER INTERLINK



2015 HORSEBOX TRAILER



2015 HINO 700 2841 DROPSIDE WITH PK  
32080 CRANE AND 7 EXTENSIONS



2017 ISUZU FVM1200 ROLLBACK  
161 000 KMS



HINO 300 814 DROPSIDE  
347 663 KMS

## WE BUY GOOD TRUCKS & TRAILERS

Frans: +27 (0) 82 570 5759 - [frans@isandotruck.co.za](mailto:frans@isandotruck.co.za) | Billy: +27 (0) 82 458 6840 - [billy@isandotruck.co.za](mailto:billy@isandotruck.co.za)



TRUCK & PLANT SALES

ADDRESS: CNR SEFAKO MAKGATHO DRIVE & N1 HIGHWAY  
TEL: 012-808-9903 / 4 / 5  
EMAIL: SALES@BIDCO.CO.ZA  
WWW.BIDCOTRUCKS.CO.ZA

**SPECIAL!**  
**R365 000 + VAT**



B10/550  
2014 SA TRUCK BODY SIDE TIPPER LINK  
R365 000 + VAT



B10/517  
2006 VOLVO FM 400 10 CUBE TIPPER  
R475 000 + VAT



B10/541  
2009 TATA LPK 1518 6 CUBE TIPPER  
R250 000 + VAT



B10/525  
2008 TOYOTA HINO 15-257  
R310 000 + VAT



B10/452  
2007 MERCEDES ATEGO 1317 DROPSIDE  
R275 000 + VAT



B10/507  
2005 HENRED SHEEP/ GOAT TRALER  
R195 000 + VAT



B10/450  
1995 MERCEDES BENZ 1417 6000L WATER TANK  
R210 000 + VAT



B10/542  
2006 MAN M2000 1800L WATER TANK  
R425 000 + VAT



B10/559  
2004 TOYOTA DYNA  
R160 000 + VAT



B10/558  
CAT 426 B TLB  
R350 000 + VAT

**WE BUY CLEAN USED TRUCKS, TRAILERS & PLANT**

**+27 (0) 12 808 9903 / 4 / 5 | SALES@BIDCO.CO.ZA**

# A LONG WAY TOGETHER



**AGRIMAX TERIS**  
RADIAL HARVESTING TIRES



[bkt-tires.com](http://bkt-tires.com)



Kaapstad	: +27 21 510 6746
Johannesburg	: +27 11 396 1356
Durban	: +27 31 564 0060
Bloemfontein	: +27 51 432 4000
Port Elizabeth	: +27 41 451 0500



# 'N LANG PAD SAAM



**RIDEMAX**  
RADIAL TRANSPORT TIRES



**BKT**  
GROWING TOGETHER

bkt-tires.com



Kaapstad	:	+27 21 510 6746
Johannesburg	:	+27 11 396 1356
Durban	:	+27 31 564 0060
Bloemfontein	:	+27 51 432 4000
Port Elizabeth	:	+27 41 451 0500



# OFF-SEASON?

Farmers don't have an off-season and neither does Firestone.

Firestone tyres perform like your job depends on them — because it does.

#FARMHARD  
#BOERKLIPHARD  
#NGOKOMELELEYO  
#NGAMANDLA

9 YEAR WARRANTY!

[FIRESTONEJOURNEYS.COM](http://FIRESTONEJOURNEYS.COM)

## Firestone





**SOLID TYRES**

**AGRIC TYRES**

**Branches In: JHB DBN CPT**

**TEL: 0861 777 772**  
Email: [info@tirecity.co.za](mailto:info@tirecity.co.za)

**WWW.TIRECITY.CO.ZA**  
*Quality & Service That Never Sleeps*



[www.jbhwhheels.co.za](http://www.jbhwhheels.co.za)

**MANUFACTURERS AND SUPPLIERS OF INDUSTRIAL, AGRICULTURAL AND HEAVY DUTY WHEEL RIMS.**

SPECIAL MODIFICATIONS AND CONVERSIONS ON ALL LEADING MODELS SUCH AS: JOHN DEERE, CLAAS, NEW HOLLAND, LANDINI, KUBOTA, MASSEY FERGUSON AND CASE.

Tel: +27 (0)11 739 5726 | [gerda@jbhwhheels.co.za](mailto:gerda@jbhwhheels.co.za) | [sales@jbhwhheels.co.za](mailto:sales@jbhwhheels.co.za)

Barnie : +27 (0)83 698 3918  
Hannes : +27 (0)83 391 5690  
Dewald : +27 (0)83 438 6305



WE DELIVER NATION WIDE!



MES CONSULTANTS - 082 963 4427



Powered by Kongskilde



**KONGSKILDE**

Moving agriculture ahead



# KONGSKILDE SPESIALISEER IN GRONDVOORBEREIDINGSTOERUSTING

## • LANDBOU



**GRAS**



**GROND**



**VOERMENGERS**



**PIETER VAN GRAAN**  
Limpopo | Mpumalanga | KZN  
**+27 (0) 71 689 1648**

**EDUAN BOOYENS**  
North West | Free State | KZN  
**+27 (0) 71 871 8163**

[www.kongskilde.com](http://www.kongskilde.com)

MES CONSULTANTS - 082 563 4427

# BECAUSE HARD WORK SHOULD BE FUN!

1050mm Universal Tow Mower



250Ltr Tow Boom Sprayer



100Ltr 8m Mounted Boomless Sprayer



12 Volt Mounted Spreader



Tow Broadcast Spreader



Steel Cage Dump Cart



## Over 50 different implements available to suit Quad Bikes, Lawn Tractors and Ride-on Mowers

Mowers | Dump Carts | Weed Wipers | Sprayers | Wagons | Chariots | Spreaders | Aerators | Arena Rollers | Rollers | Sweepers | Harrows | Rakes | Tankers | Tool Bars

TURN YOUR QUAD BIKE INTO A WORK HORSE!

Tel: +27 (0) 33 330 6247  
 Email: info@quadmaster.co.za  
 Website: www.quadmaster.co.za

**Q M**  
**QUAD MASTER**  
 ATV IMPLEMENTS

# MMS

**MUROTRON PTY LTD**  
T/A Murotron Machine Sales

**KOMATSU PC 200-3**



R380 000.00 EXCL

**2007 SHANTUI SD 16  
FULLY REFURBISHED**



R850 000.00 EXCL

**TLB TRENCHING BUCKET**



R12 000.00 EXCL

**B30D 27000L WATER BOWSER**



R1 800 000.00 EXCL

**2009 VOLVO EC460**



R580 000.00 EXCL

**KOMATSU PC200 TRENCHING BUCKET**



R30 000.00 EXCL

**2006 TATA 4X4 TRUCK  
6 TON CRANE**



R380 000.00 EXCL

**DYNAPACK CA250D1  
SMOOTH DRUM ROLLER**



R450 000.00 EXCL

**BOBCAT 435 EG 2008 6800HRS**



R250 000.00 EXCL

**2011 VOLVO EC700.  
21000 HOURS**



R1 000 000.00 EXCL

**PLASMA CUTTER 16MM STEEL**



R5 500.00 EXCL

## WE SELL USED TRUCKS & MACHINERY

Freddie Muller: +27 (0) 76 958 3630 | Martin Bronkhorst: +27 (0) 82 526 2133

murotronsales@gmail.com | freddymuller39@gmail.com

Plot 128, Tierpoort, Pretoria East | PO Box 11992, Erasmuskloof, 0048



+27 (0) 802 1778 | office@ipcoplumbing.co.za | www.ipcoplumbing.co.za

- Hire of TLB
- Move of TLB and Containers – 6m
- Empty of septic tanks





IPS PROJECTS  
Hire of TLB  
+27 (0) 83 302 2499  
+27 (0) 12 802 1778  
Empty septic tanks  
+27 (0) 12 802 1778  
+27 (0) 12 941 9132

IPC EMERGENCY PLUMBING  
All plumbing maintenance and geyser installations  
+27 (0) 73 519 2567  
+27 (0) 12 802 1778

MES CONSULTANTS - 082 583 1427



**Swartland Suijpompe EDMS BPK**  
Sedert 1991

Ons vervaardig en versprei 'n reeks hoë gehalte waaiersuijpompe vir die gebruik van vrugte-, neut-, sitrus- en wingerdeboorde sowel as in aanplantings met hoë digtheid soos wingerde.



**Teyme GTE Neutsuijpomp**

2000, 3000 en 4000 liter modelle  
200 lt / min Comet Pomp  
1050 mm Waaiër  
Toediening van bome tot 21 m hoog  
Baie goeie bedekking op boomoppervlakte  
Beweglik met kort draaisisteem



**Teyme GTX 9 Toring Suijpomp**

1500, 2000 en 3000 liter modelle  
200 lt / min Comet Pomp  
915 mm Waaiër  
Ontwerp vir Hoëspoed toedienings  
Toring is ontwerp om Chemie 200% beter te plaas op plantmateriaal met minimum "Spray Drift"

Tel: 021 876 3510 /021 300 0223  
Andre Lambrechts: 073 303 4270  
[www.swartlandsuijpompe.co.za](http://www.swartlandsuijpompe.co.za)

Sarel Swart: 082 554 2121  
Epos: [rasc@adept.co.za](mailto:rasc@adept.co.za)

Carl 082 450 6154    Office + 27 (0)11 913 1377  
Bjorn 079 494 4215    carl.bischoff@yahoo.co.za  
Francois 082 445 1741    bjornjsf@gmail.com  
Pikkie 079 487 2423    (Cape District)pikkiejsf@gmail.com

Website [www.bladrammenas.co.za](http://www.bladrammenas.co.za)



**Aalwurm / Nematode Problems?**




Farming for the Future

# Bladrammenas

Plant your Eelworm problems away!

- Reduces Eelworm up to 98%
- Up to 200t of Green Manure per /Ha
- Reduces Compaction
- Increases Quality and Quantity of your crops
- Improves soil health significantly
- Reduces risk of Fungal and Bacterial Diseases
- Europe's leading Biological Fumigation



Find us on Facebook

Farming for the Future

# Spading Machine

Disk, Rip and Plough in one pass

- Far more efficient than ploughing
  - Reduces Diesel Cost
- Reduces Running Costs by ATLEAST 40%
  - Creates a perfect seed bed
- Multiple Planters / Drills can be mounted on
  - From 1.8m - 6m Wide
- Operates at a depth 500mm+



# Myburgh Toerusting

[www.mtoer.co.za](http://www.mtoer.co.za)

Eerste van sy soort  
 Vaste raam  
 Tollie werk op wielbearings  
 Elke tol op sy eie arm  
 Tolle hang aan vere  
 Arms op bearings



**6 TOL IN LYN SWAAR DIEN HARK!!**

Jannie Myburgh  
 +27 (0) 82 417 0175 | [mybtoer@gmail.com](mailto:mybtoer@gmail.com)





**FULL LINE, FULL SUPPORT, FULL SATISFACTION**



# A SIMPLE PROMISE: *We make it easy*

CES Forklift is the importing and marketing agent for Liugong Forklifts and material handling equipment in South Africa. CES Forklift has branches in all major cities and can provide national backup and support for all Liugong forklifts.

[WWW.CESFORKLIFT.CO.ZA](http://WWW.CESFORKLIFT.CO.ZA)  
[WWW.LIUGONG.COM](http://WWW.LIUGONG.COM)



MES CONSULTANTS - 082 563 4427

+27 (0) 21 510 0466  
willem@cesforklif.co.za

**SALES | PARTS | FINANCE | SERVICE | RENT TO OWN**

# BANDIT WOOD CHIPPERS

THE ONLY WOOD CHIPPING EQUIPMENT YOU'LL EVER NEED



*Innovation and experience are nothing without variety. That's why Africa Biomass Company, the only authorised dealer for Bandit Industries Inc. in Southern Africa, offers a wide range of Bandit wood chippers - stump grinders, 150mm to 580mm PTO & ENGINE driven hand-fed wood chippers, whole tree chippers and Bandit's The Beast® Wood Recycler. Whatever the size, a Bandit wood chipper will tackle the job.*

**Customised for the South African environment.  
Contact Africa Biomass Company to learn more!**



**AFRICA  
BIOMASS  
COMPANY**

*Your caring family trading as world leaders in the recycling industry*

Tel: 023 342 1212 • [www.abc.co.za](http://www.abc.co.za)  
2 - 4 Joubert Street, Worcester, 6850

**AUTHORISED  
DEALER FOR:**



**Bandit  
INDUSTRIES, INC.**

# BANDIT CHIPPERS

RELIABLE WOOD CHIPPERS TO GET YOU THROUGH YOUR WORK WEEK

## INTIMIDATOR 12XP

300 mm capacity • 85 hp ENGINE I PTO



## INTIMIDATOR 15XP

380 mm capacity • 110 hp ENGINE I PTO



## MODEL 65XP

150 mm capacity • 31hp ENGINE I PTO



## MODEL 75XP

180 mm capacity • 35hp ENGINE I PTO



**BANDIT  
90XP**

LIMITED STOCK AT A **SPECIAL PRICE**

PRODUCTIVE, DEPENDABLE WOOD CHIPPERS PROFESSIONALS CAN TRUST

**NEED  
PARTS?**

Parts available for all wood chipper brands in South Africa.  
Contact us today to order your wood chipper parts!

No matter if you're a dedicated tree care specialist or a right-of-way contractor, a Bandit wood chipper can handle it all. The 65XP, 75XP, 90XP, 12XP and 15XP are built to **stand up to the toughest jobs**, with powerful pulling and compressing power, durable drums and heavy-duty components.

Visit [www.abc.co.za](http://www.abc.co.za) or call ABC to learn more!



**AFRICA  
BIOMASS  
COMPANY**

Tel: 023 342 1212 • [www.abc.co.za](http://www.abc.co.za)  
2 - 4 Joubert Street, Worcester, 6850

FIND US ONLINE >>





# Burquip

international

Burquip International has been a leading manufacturer, importer and distributor of high speed trailer and agricultural implement trailer components in the Southern African market for over 25 years.

We offer a wide range of high speed and agricultural trailer components that will serve the unique requirements of each of these markets from one of the three branch outlets within South Africa. Exports to African countries include amongst others Namibia, Botswana, Zimbabwe, Mozambique, Zambia and Malawi. Burquip's axle manufactured standard length trailer axles are readily available from outlets and any custom order or large quantity order can be supplied within 10 days from receipt of order. Burquip's sales representatives are trained to assist you with your enquiries and will also prepare quotations on your request.



**Western Cape:**  
 PO Box 281, Kuilsriver, 7579  
 Tel: 021 907 1900 • Fax 021 907 1999  
 Email: [information@burquip.co.za](mailto:information@burquip.co.za)

**Kwazulu-Natal:**  
 PO Box 1076, Pinetown, 3600  
 Tel: 031 792 1020 • Fax 031 792 1018  
 Email: [salespine@burquip.co.za](mailto:salespine@burquip.co.za)

**Gauteng:**  
 PO Box 25769, East Rand, 1462  
 Tel: 011 396 6000 • Fax 011 397 4019  
 Email: [salesjhb@burquip.co.za](mailto:salesjhb@burquip.co.za)

[www.burquip.co.za](http://www.burquip.co.za)





**CNC CLEAR CUT**  
WORLD CLASS PLASMA TABLES



## CUTTING SOLUTIONS FOR YOUR BUSINESS



### PLASMA CUTTING TABLES

High quality CNC plasma tables.  
Widest variety available in Africa.



### TECHNICAL SUPPORT

Local product, local support. Highly  
trained technical team on stand by.



### PLASMA CONSUMABLES

Hypertherm OEM & CNC Clear Cut  
plasma consumables available.

**Hypertherm**<sup>®</sup>

CHANNEL PARTNER

📍 12 FAIRWOOD RD, ROSSLYN, PRETORIA, 0200

☎ TEL: +27 12 541 0552 FAX: +27 86 684 6813

✉ ENQUIRIES@CNCCLARECUT.CO.ZA

🌐 WWW.CNCCLARECUT.CO.ZA



# DISTRIBUTION LIST

TOWN   CITY	SHOP	PROVINCE
ALBERTINIA	SSK AGRILAND	WESTERN CAPE
AMERSFOORT	HINTERLAND	MPUMALANGA
BAINSVLEI	BAINSVLEI CO-OP	FREE STATE
BEAUFORT WES	BKB	WESTERN CAPE
BELFAST	HINTERLAND	MPUMALANGA
BERGVILLE	HINTERLAND	KWAZULU-NATAL
BETHLEHEM	HINTERLAND	FREE STATE
BIZANA	TWK	EASTERN CAPE
BLOEMFONTEIN	BKB	FREE STATE
BLOEMHOF	SUIDWES LANDBOU	FREE STATE
BOSHOF	SUIDWES LANDBOU	FREE STATE
BOTHAVILLE	SUIDWES LANDBOU	FREE STATE
BRITS	AFGRI	NORTH WEST
BRITS	JJ'S EXHAUSTS	NORTH WEST
BRITS	OBARO	NORTH WEST
BRONKHORSTSPRUIT	AFGRI	MPUMALANGA
BULTFONTEIN	HINTERLAND	FREE STATE
CAROLINA	HINTERLAND	MPUMALANGA
CAROLINA	TWK	MPUMALANGA
CEDERVILLE	TWK	KWAZULU-NATAL
CERES	KAAP AGRI	WESTERN CAPE
CRADOCK	AGRICO	EASTERN CAPE
CULLINAN	AFGRI	GAUTENG
DE AAR	BKB	NORTHERN CAPE
DELMAS	HINTERLAND	MPUMALANGA
DELMAS	AFGRI	MPUMALANGA
DUNDEE	HINTERLAND	KWAZULU-NATAL
ELLIOT	OVK	EASTERN CAPE
ERMELO	HINTERLAND	MPUMALANGA
FORT BEAUFORT	THE CO-OP	EASTERN CAPE
GERDAU	NWK	NORTH WEST
GRAAFF-REINET	OVK	EASTERN CAPE
GRAAFWATER	KAAP AGRI	WESTERN CAPE
GREYTOWN	TWK	KWAZULU-NATAL
HANKEY	THE HUMANSDORP CO-OP	EASTERN CAPE
HARRISMITH	HINTERLAND	FREE STATE
HARTSWATER	HINTERLAND	NORTHERN CAPE
HEIDELBERG	HINTERLAND	GAUTENG
HEIDELBERG	SSK AGRILAND	WESTERN CAPE
HEILBRON	HINTERLAND	FREE STATE
HERBERTSDALE	SSK AGRILAND	WESTERN CAPE
HEROLD	SSK AGRILAND	WESTERN CAPE
HOEDSPRUIT	OBARO	LIMPOPO
HOOPSTAD	HINTERLAND	FREE STATE
HOOPSTAD	SUIDWES LANDBOU	NORTH WEST
HUMANSDORP	THE HUMANSDORP CO-OP	EASTERN CAPE
IXOPO	TWK	KWAZULU-NATAL
JAN KEMPDORP	HINTERLAND	NORTHERN CAPE
JHB MARKET	REBELO, HALL 1	GAUTENG
KLERKSDORP	HINTERLAND	NORTH WEST
KNYSNA	SSK AGRILAND	WESTERN CAPE
KRAKEEL	SSK AGRILAND	EASTERN CAPE
KROONSTAD	HINTERLAND	FREE STATE
KURUMAN	AGRIMARK	NORTHERN CAPE
KYA SANDS	ANB VET	GAUTENG
LADYSMITH	HINTERLAND	KWAZULU-NATAL
LEEUDORINGSTAD	SUIDWES LANDBOU	NORTH WEST
LEPHALALE	OBARO	LIMPOPO
LETSITELE	NTK	LIMPOPO
LICHTENBURG	BEARING MAN GROUP	NORTH WEST
LICHTENBURG	BOSS PROPSHAFT BALANCING	NORTH WEST
LOUWNA	SUIDWES LANDBOU	NORTH WEST
LOXTON	KAROO MEAT FARMERS CO-OP	NORTHERN CAPE
LUTZVILLE	KAAP AGRI	WESTERN CAPE
LYDENBURG	HINTERLAND	MPUMALANGA

TOWN   CITY	SHOP	PROVINCE
MAKHADO	KAAP AGRI	LIMPOPO
MALMESBURY	KAAP AGRI	WESTERN CAPE
MARBLE HALL	TWK KUNSMIS	LIMPOPO
MIGDOL	SUIDWES LANDBOU	NORTH WEST
MISGUND	SSK AGRILAND	WESTERN CAPE
MOSELBAY	SSK AGRILAND	WESTERN CAPE
NABOOMSPRUIT	OBARO	LIMPOPO
NELSPRUIT	HINTERLAND	MPUMALANGA
NEWCASTLE	HINTERLAND	KWAZULU-NATAL
NIGEL	HINTERLAND	GAUTENG
ODENDAALSRUS	HINTERLAND	FREE STATE
OP-DIE-BERG	KAAP AGRI	WESTERN CAPE
ORANJESIG	DIY SUPERSTORE	FREE STATE
ODUSHOORN	KLEIN KAROO CO-OP	WESTERN CAPE
PAARL NORTH	KAAP AGRI	WESTERN CAPE
PARYS	HINTERLAND	FREE STATE
PETRUSBURG	HINTERLAND	FREE STATE
PHILIPPI	KAAP AGRI	WESTERN CAPE
PIETERMARITZBURG	MASCOR	KWAZULU-NATAL
PIETERMARITZBURG	PALMER AGRIC & TRACTOR	KWAZULU-NATAL
PIETERMARITZBURG	TWK	KWAZULU-NATAL
PIETERSBURG	NTK	LIMPOPO
PIKETBERG	KAAP AGRI	WESTERN CAPE
PLETTENBERGBAY	SSK AGRILAND	WESTERN CAPE
PONGOLA	TWK	KWAZULU-NATAL
PORT ELIZABETH	THE HUMANSDORP CO-OP	EASTERN CAPE
PORTERVILLE	KAAP AGRI	WESTERN CAPE
POTCHEFSTROOM	HINTERLAND	NORTH WEST
POTCHEFSTROOM	KLEINPLAAS PYPE	NORTH WEST
POTGIETERSRUS	OBARO	LIMPOPO
PRETORIA - ATTERBURY	FARM CITY	GAUTENG
PRETORIA - MONTANA	N1 4X4	GAUTENG
PRETORIA - PYRAMID	N1 4X4	GAUTENG
PRIESKA	GWK	NORTHERN CAPE
PRINCE ALBERT	KLEIN KAROO CO-OP	WESTERN CAPE
QUEENSTOWN	BKB	EASTERN CAPE
RAWSONVILLE	KAAP AGRI	WESTERN CAPE
REIVILLO	SUIDWES LANDBOU	NORTH WEST
RIEBEEK-WEST	KAAP AGRI	WESTERN CAPE
RIVERSDAL	SSK AGRILAND	WESTERN CAPE
RUSTENBURG	OBARO	NORTH WEST
SENEKAL	AFGRI	FREE STATE
SPRINGBOK	AGRIMARK	NORTHERN CAPE
STELLA	SUIDWES LANDBOU	NORTH WEST
STELLENBOSCH	KAAP AGRI	WESTERN CAPE
STILL BAY EAST	SSK AGRILAND	WESTERN CAPE
SWELLENBAM	SSK AGRILAND	WESTERN CAPE
THEUNISSEN	HINTERLAND	FREE STATE
TOSCA	SUIDWES LANDBOU	NORTH WEST
TZANEEN	KAAP AGRI	LIMPOPO
TZANEEN	NTK	LIMPOPO
TZANEEN	SPRAYRITE	LIMPOPO
TZANEEN	WD SAAILINGE	LIMPOPO
UNDERBERG	TWK	KWAZULU-NATAL
UNIONDALE	SSK AGRILAND	WESTERN CAPE
UPINGTON	AGRIMARK	NORTHERN CAPE
VENTERSDORP	HINTERLAND	NORTH WEST
VEREENIGING	HINTERLAND	GAUTENG
VEREENIGING	VICRO BULK	GAUTENG
VOLKSRUST	BKB	MPUMALANGA
VREDE	BKB	FREE STATE
VRYBURG	SUIDWES LANDBOU	NORTH WEST
VRYHEID	HINTERLAND	KWAZULU-NATAL
WELKOM	HINTERLAND	FREE STATE
WESSELSBRON	SUIDWES LANDBOU	FREE STATE
WINTERTON	TWK	KWAZULU-NATAL
WOLMARANSTAD	HINTERLAND	NORTH WEST
WOLMARANSTAD	SUIDWES LANDBOU	NORTH WEST
WONDERFONTEIN	TWK	MPUMALANGA
WORCESTER	KAAP AGRI	WESTERN CAPE
WORCESTER	WP CHIPPER	WESTERN CAPE

# Ford



3.2 RANGER WILDTRAK 4X2

**FROM R8199<sup>PM</sup>**

Retail Price: R580 100 | NO DEPOSIT  
Guaranteed Future Value: R319 055 (55%)  
Interest Rate: 6.43%  
Term: 48 months (20 000km per year)

3.2 RANGER WILDTRAK 4X4

**FROM R8199<sup>PM</sup>**

Retail Price: R633 700 | NO DEPOSIT  
Guaranteed Future Value: R348 535 (55%)  
Interest Rate: 6.55%  
Term: 48 months (20 000km per year)

SMS the word "FORD" to  
48701 & we will call you back!



Go Further

\*Subject to Finance Approval through Ford Credit.  
T&C's apply. Excludes dealer charges.



Proudly part of the MOTORGROUP

**FB MENLYN FORD**

CNR FRIKKIE DE BEER & GLEN MANOR RDS, MENLYN  
www.bbmenlynford.co.za | FSP: 22482

**012 368 8000**





Innovation  
that excites

# SAVE R80 000

## ON A NEW

# NP300 HARDBODY 2.5TDi Hi-Rider Double Cab



You can now own a **BRAND NEW**

**Nissan NP300 Hardbody 2.5TDi Hi-Rider Double Cab**  
for less than R300 000. **SAVE R80 000!**

**WE DELIVER NATIONWIDE! LIMITED STOCK! TILL ENDJUNE 2018!**

**Contact us for more information or to book a test drive!**

Terms and conditions apply. Offers only valid while dealer stock last. Please note pictures are for illustrative purposes only but the model derivative and offer are consistent. The colour shown on advertised models will not necessarily be available as stock are limited. All rates and payments on offers advertised are subject to customer credit approval by the bank and cannot be guaranteed to customers. All transaction fees excluded. Vehicle on the road costs excluded. Price subject to change without prior notice. E&OE.

Proudly part of the  MOTORGROUP

 **SILVERTON NISSAN**

538 PRETORIA ROAD, SILVERTON  
www.bbsilvertonnissan.co.za | FSP: 22482

# 012 804 8166



## CRUISER EN TOYOTA KUNDIGES



- Onderdele – nuwe, herboude en gebruikte
- Herboude enjins, ratkaste en ewenaars
- Ten volle toegeruste en RMI-gesertifiseerde werkwinkel
- Herstelwerk, onderhoud en herbouings
- Veringstelsels, snorkels en toebehore
- Cruiser- en Toyota 4WD- wildbesigtigingsvoertuie
- Vervaardiging van gespesialiseerde mynvoertuie
- Eksklusiewe handelsmerkkler

## LAND CRUISER EN TOYOTA 4WD EENSTOPWINKEL VIR ONDERDELE EN MEER

### KONTAK ONS

+27 [0] 12 545 0200  
 info@n14x4.co.za  
 www.N14x4.co.za

### ADRES

**PYRAMID**  
**MONTANA**

Hoewe 6, Olifantstraat, Haakdonglaagte, Pyramid, Pretoria  
 Winkel 5, Montana Value Centre, Tibouchinalaan 1151, Montanapark, Pta



# TOMORROW'S LEGACY DEPENDS ON **DECISIONS YOU MAKE TODAY. LET US GUIDE YOU.**

With over 170 years of experience, partnering with Old Mutual will help you ensure your legacy and your land are in safe hands for future generations. Speak to people who understand your industry. It all starts with a conversation.

## **TODAY'S THE DAY. GET GREAT FINANCIAL ADVICE.**

**Contact your Old Mutual financial adviser, your broker, or  
call 0860 60 60 60.**

DO GREAT THINGS



**OLDMUTUAL**

# Piket

## Implemente

tel: +27(0)22 913 2435  
e-pos: info@piket.co.za  
web: www.piket.co.za

10-RY

8-RY

6-RY

OPSIONEEL:  
SLEEPSTANG  
BESKIKBAAR VIR  
ALLE MODELLE

14-RY

16-RY

20-RY

## NO TILL DEKGEWAS FYNSAAD PLANTER

- Modelle: 6-Ry / 8-Ry / 10-Ry / 14-Ry / 16-Ry / 20-Ry
- 3-Kompartement saad, fynsaad & kunsmis kis.
- Plant van dekgewas in wingerde & vrugteboorde of weiding op suiwel & vee plase.



14-RY / 16-RY / 20-RY:  
PLANT WEIDING OP  
SUIWEL & VEE PLASE



6-RY / 8-RY / 10-RY:  
DEKGEWAS IN WINGERDE  
& VRUGTEBOORDE



NO TILL: PLANT IN  
GEVESTIGDE WEIDING



MAKLIK & VINNIGE  
KALIBRASIE

ONS **VERKOOP** 'N HELE  
VERSKEIDENHEID SAADKISTE,  
SOOS HIERDIE  
1-3 KOMPARTEMENT  
PIKET SAADKIS

Kontak ons vir meer inligting by tel: +27(0)22 913 2435 of  
stuur 'n e-pos aan: info@piket.co.za of besoek: www.piket.co.za