

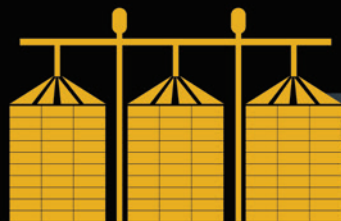
# AGRIFOODSA MAG

FREE SUPPLIERS GUIDE

APR - MAY 2021  
Vol 5 • No 6



Joined  
Specialised Farming



[www.gsiafrica.co.za](http://www.gsiafrica.co.za)

STORAGE | CONDITIONING  
MATERIAL HANDLING | STRUCTURES



"Farming isn't a battle against nature, but a partnership with it. It is respecting the basics of nature in action and ensuring that they continue"  
~ Jeff Koehler

OUTPERFORM THE NORM



Introlab is committed to continuously provide well-researched, innovative crop solutions by adapting to the ever changing environment and needs of its clients.

For more information contact:

INTROLAB (PTY) LTD (Reg. No.: 2005/039779/07)

T +27 21 864 2145/6 E [info@introlab.co.za](mailto:info@introlab.co.za)

W [www.introlab.co.za](http://www.introlab.co.za)



# EDITOR'S LETTER



Over the past two months we have faced a great many challenges and experienced the full spectrum of emotions due to the current economic situation Covid-19 has left us in. When we started working on this copy of the magazine two months ago, we were happy and optimistic, as always, about

compiling the best compilation possible, but that joy soon turned to sadness as we heard and saw the struggles of our advertisers and farming community in South Africa. It's truly heart-breaking to see how large, established companies are barely making ends meet, and smaller, promising business are forced to close up shop. Fear set in as the enthusiasm and participation was just not happening and it seemed to us a very real possibility that we would not be able to print and distribute a magazine this cycle.

Then everything started to turn around shortly before we were scheduled to go to print. Our marketing team had an incredibly successful roadshow to the Free State and North West Province, and support was rolling in from all over the country. In a matter of two weeks, we not only managed to reach our advertising quota, but to our utter surprise and delight we had to increase our page count and print run.

We are extremely grateful and proud to be able to bring you the April | May 2021 edition of the AGRIFOODSA Magazine. We would like to thank every advertiser and reader for their continued support, and extend our best wishes to all who are affected by the pandemic.

Our cover featured advertiser for this edition, Joined Specialised Farming, is a company that supports growers, improve yields and better their crops by using biological principals and modern technology. With a world that is becoming less fond of chemicals and looking at more biological ways to look after and build soils, JSF has the perfect solution to improve soils, productivity, quality and quantity of cash crops, all while moving towards more sustainable farming. JSF believes that everything starts with one's soil and it should be the first priority on a long list of exercises to practice whilst farming. To find out more about their products and services, go to [www.jsfsoilimprovement.co.za](http://www.jsfsoilimprovement.co.za).

Be on the lookout for our AGRIFOODSA Newsletter and find as on all major social media networks for our digital magazine, informative articles, exciting competitions and more.

Love and light,

Chantell de Bruin

EDITOR IN CHIEF  
@chantellschmahl

## EDITORIAL COMMITTEE

Editor in chief : Chantell de Bruin  
Managing director : Mabel Schmahl  
Production manager : Ronel Schmahl  
Content manager : Aby Maclellan

## ACCOUNTS

Leandra Beukes : +27 (0) 12 997 3407  
accounts@agrifoodsa.info

## ADVERTISING & RATES

Louis de Bruin : +27 (0) 82 060 2398  
louis@agrifoodsa.info

Mabel Schmahl : +27 (0) 82 563 4427  
mabel@agrifoodsa.info

Nicole Muller : +27 (0) 84 735 6573  
sales@agrifoodsa.info

## COVER PHOTO

JOINED SPECIALISED FARMING



## LAYOUT, PUBLISHING & DISTRIBUTION

MES Consultants South Africa

Format	: B5, full-colour, glossy magazine
Frequency	: Bi-monthly
Language	: Bilingual
LSM	: 6-10
Print run	: 10 000 - 15 000
Digital run	: 12 000
Readership	: 70 000
Distribution	: Nationally available at agricultural outlets (please see pages 60-61 for a detailed list)
Read online	: <a href="http://www.agrifoodsa.info/magazine">www.agrifoodsa.info/magazine</a>



© 2020 AGRIFOODSA Magazine. All rights reserved.

**Planter Monitor**

- Seed per 100m per row, seed population
- Hectares worked and much more
- Easy to install and maintain
- Fertiliser and turning of axles
- Can be applied to most planters
- Real tough, rust and water resistant

**Cut losses with PRECISION Plant with VISION**

**Process Monitor for Air Seeders**

- Area
- Speed
- Tacho up to 4 axles
- Alarm on each function
- Easy to install
- Bin / Tank full
- Bin / Tank empty

**3 YEAR GUARANTEE**

Tel: 012 345 3193  
Fax: 012 345 6763  
Web: [www.electrolee.co.za](http://www.electrolee.co.za)  
Email: [info@electrolee.co.za](mailto:info@electrolee.co.za)  
Sales: [sales@electrolee.co.za](mailto:sales@electrolee.co.za)



## AECI PLANT HEALTH

UNLOCKING  
NATURE'S POTENTIAL  
[WWW.AECIWORLD.COM](http://WWW.AECIWORLD.COM)

Page 30



## AVANT

NATIONWIDE DEALER IN  
LOADERS & ATTACHMENTS  
[WWW.AVANTSA.CO.ZA](http://WWW.AVANTSA.CO.ZA)

Page 41



## AFRICAN POULTRY SOLUTIONS

FROM THE FARMER,  
TO THE FARMER  
[WWW.AFRICANPS.CO.ZA](http://WWW.AFRICANPS.CO.ZA)

Page 27



**BEMLAB**  
COMPREHENSIVE ANALYTICAL  
SERVICE FOR FARMERS

[WWW.BEMLAB.CO.ZA](http://WWW.BEMLAB.CO.ZA)

Page 31



## AFRIQ WATER MANAGEMENT

IRRIGATION PRODUCTS  
[WWW.AFRIQWATER.CO.ZA](http://WWW.AFRIQWATER.CO.ZA)

Pages 45



## BENETRAX MACHINERY

AGRICULTURAL MACHINERY  
[WWW.BENETRAX.CO.ZA](http://WWW.BENETRAX.CO.ZA)

Page 33



## AGRI FREQUENCIES

FARM SUSTAINABLY,  
FARM WITH FREQUENCY  
[WWW.AGRIFREQUENCIES.COM](http://WWW.AGRIFREQUENCIES.COM)

Pages 38-39



## BIG BOX CONTAINERS

NEW & USED SHIPPING CONTAINERS  
AND REFRIGERATED CONTAINERS  
[WWW.BIGBOXCONTAINERS.CO.ZA](http://WWW.BIGBOXCONTAINERS.CO.ZA)

Page 42



## AGRI-COM

ONE-STOP SUPPLIER FOR  
YOUR BUSINESS AND FARM

+27 (0) 58 303 8979

Page 19



## BRUKER SA

SPECTROSCOPIC SOLUTIONS  
IN THE MILK & DAIRY INDUSTRY

[WWW.BRUKER.COM/DAIRY](http://WWW.BRUKER.COM/DAIRY)

Page 13



## AGRICOR

FARM IMPLEMENTS,  
FINANCING AVAILABLE  
[WWW.AGRICOR.CO.ZA](http://WWW.AGRICOR.CO.ZA)

Page 33



## CANCOR TRADING

WE SUPPLY PIPES, VALVES,  
FITTINGS AND MUCH MORE  
[WWW.CANCOR.CO.ZA](http://WWW.CANCOR.CO.ZA)

Page 37



## AGRITECH EQUIPMENT

FARM EQUIPMENT

[WWW.AGRITECHEQUIP.COM](http://WWW.AGRITECHEQUIP.COM)

Page 33



## CRV XSEED

IT'S ALL IN THE GENETICS -  
TRUST US

[WWW.XSEED.CO.ZA](http://WWW.XSEED.CO.ZA)

Page 37



## AGT FOODS AFRICA

FROM PRODUCER  
TO THE WORLD

[WWW.AGTFOODS.CO.ZA](http://WWW.AGTFOODS.CO.ZA)

Pages 50



## EHD COMPONENTS

ENGINE & HEAVY DUTY  
COMPONENTS

[WWW.EHD.CO.ZA](http://WWW.EHD.CO.ZA)

Page 59



## ALPHA DAMME

COST EFFECTIVE,  
QUALITY STEEL STRUCTURES

[ALPHADAMME@GMAIL.COM](mailto:ALPHADAMME@GMAIL.COM)

Pages 10 & 47



## ELANCO

TRUSTED BY GENERATIONS

[WWW.ELANCO.COM](http://WWW.ELANCO.COM)

Pages 22 & 58



## APAC

AGRICULTURAL PRODUCE  
AGENTS COUNCIL

[WWW.APACWEB.ORG.ZA](http://WWW.APACWEB.ORG.ZA)

Page 49



## ELECTROLEE

PLANTERS, MONITORS  
& PROCESS MONITORS

[WWW.ELECTROLEE.CO.ZA](http://WWW.ELECTROLEE.CO.ZA)

Page 03



**FARMRANGER**  
LIVESTOCK  
SECURITY COLLARS  
[WWW.FARMRANGER.CO.ZA](http://WWW.FARMRANGER.CO.ZA)  
Page 23



**IRRIGATION UNLIMITED**  
ALL YOUR IRRIGATION NEEDS  
[WWW.IUNLIMITED.CO.ZA](http://WWW.IUNLIMITED.CO.ZA)  
Page 26



**FARMTRACK**  
PRECISION  
CROP PROTECTION  
[WWW.FARMTRACK.CO.ZA](http://WWW.FARMTRACK.CO.ZA)  
Page 23



**JBH WHEELS**  
DOES YOUR TRACTOR  
LOOK THE PART?  
[WWW.JBHWHEELS.CO.ZA](http://WWW.JBHWHEELS.CO.ZA)  
Page 48



**F.E.R.T.A.S.A.**  
FERTILIZER ASSOCIATION  
OF SOUTH AFRICA  
[WWW.FERTASA.CO.ZA](http://WWW.FERTASA.CO.ZA)  
Pages 62-63



**JEPS GENERATORS & FIELD SERVICES**  
10 YEARS EXPERIENCE IN  
PERFECTING GENERATORS  
[WWW.JEPSGENERATORS.CO.ZA](http://WWW.JEPSGENERATORS.CO.ZA)  
Page 46



**GENTAG**  
IMPORTS & EXPORTS (PTY) LTD  
Agricultural Implements  
**GENTAG IMPORTS & EXPORTS**  
HAMMER MILLS, PACKING &  
FEEDING SYSTEMS AND MORE  
[WWW.GENTAG.CO.ZA](http://WWW.GENTAG.CO.ZA)  
Page 09



**JOINED SPECIALISED FARMING**  
SPECIALISTS IN GREEN COVER CROPS  
[WWW.JSFSOILIMPROVEMENT.CO.ZA](http://WWW.JSFSOILIMPROVEMENT.CO.ZA)  
Cover



**GSI AFRICA**  
TAKE CONTROL  
OF YOUR PROFIT  
[WWW.GSIAFRICA.CO.ZA](http://WWW.GSIAFRICA.CO.ZA)  
Cover Strip & Page 40



**KLERKSCALE**  
SPECIALISED  
WEIGHBRIDGE MANUFACTURER  
[WWW.KLERKSCALE.CO.ZA](http://WWW.KLERKSCALE.CO.ZA)  
Page 08



**H3 GENERATOR WORKS**  
GENERATOR SALES, SERVICES  
& MANUFACTURING  
[WWW.GENERATORWORKS.CO.ZA](http://WWW.GENERATORWORKS.CO.ZA)  
Page 59



**LEADING EDGE**  
GLOBAL LEADERS IN  
SILAGE MANAGEMENT  
SARNANESENBEREND@GMAIL.COM  
Page 07



**HARDI**  
HARDI NAVIGATOR,  
CLASS LEADING DESIGN  
[WWW.HARDI.CO.ZA](http://WWW.HARDI.CO.ZA)  
Page 41



**LTG FREIGHT**  
LOGISTICS &  
TRANSPORT - GLOBALLY  
[WWW.LTGFREIGHT.CO.ZA](http://WWW.LTGFREIGHT.CO.ZA)  
Pages 52-53



**HIGHVELD HONEY FARMS**  
SUPPLIER OF HONEY,  
BEE HIVES AND MORE  
[WWW.HIGHVELDHONEY.CO.ZA](http://WWW.HIGHVELDHONEY.CO.ZA)  
Page 27



**MOTORLAND KLERKSDORP**  
QUALITY USED VEHICLES  
[WWW.MOTORLANDKLERKSDORP.CO.ZA](http://WWW.MOTORLANDKLERKSDORP.CO.ZA)  
Page 55



**HYDRO SOLUTIONS**  
WATER & SOLAR  
SOLUTIONS  
[WWW.HYDRO-SOLUTIONS.CO.ZA](http://WWW.HYDRO-SOLUTIONS.CO.ZA)  
Page 11



**NASPAQ**  
PARTS, WORKSHOP  
& ENGINEERING  
[SALES@NASPAQ.CO.ZA](mailto:SALES@NASPAQ.CO.ZA)  
Page 51



**INTROLAB CHEMICALS**  
CROP SOLUTIONS TO  
OUTPERFORM THE NORM  
[WWW.INTROLAB.CO.ZA](http://WWW.INTROLAB.CO.ZA)  
Page 02



**NETAFIM**  
GROW MORE WITH LESS™  
[WWW.NETAFIM.CO.ZA](http://WWW.NETAFIM.CO.ZA)  
Page 13



## NOORDWES DAMME

WATER STORAGE  
SOLUTIONS

[WWW.NWDAMME.CO.ZA](http://WWW.NWDAMME.CO.ZA)

Page 32



## PLUSNET|GEOTEX

AGRICULTURAL  
SHADE NETS & MORE

[WWW.PLUSNETGEOTEX.CO.ZA](http://WWW.PLUSNETGEOTEX.CO.ZA)

Pages 24-25



## OLI VIBRATORS

EFFICIENT DISCHARGE SOLUTIONS

[WWW.OLIVIBRA.COM](http://WWW.OLIVIBRA.COM)

Pages 28-29



## RHINO TRAILIES

CUSTOM MADE RAILS

[WWW.RHINOTRAILIES.CO.ZA](http://WWW.RHINOTRAILIES.CO.ZA)

Page 41



## OP EN TOP CANOPIES

WATER BARROWS, CANOPIES,  
DUSTBINS AND MORE

[JPDUPRE@LANTIC.NET](mailto:JPDUPRE@LANTIC.NET)

Pages 09 & 51



## ROSS POULTRY

THE BREED OF CHOICE

[WWW.ROSSPOULTRYBREEDERS.CO.ZA](http://WWW.ROSSPOULTRYBREEDERS.CO.ZA)

Page 17



**PARATUS**  
Always Prepared

## PARATUS SOUTH AFRICA

AFRICA'S QUALITY NETWORK

[WWW.MAXWELL.CO.ZA](http://WWW.MAXWELL.CO.ZA)

Page 36



## ROTRIX AFRICA

MECHANISED IRRIGATION SYSTEMS

[WWW.ROTRIXAFRICA.CO.ZA](http://WWW.ROTRIXAFRICA.CO.ZA)

Page 31



Pat Hinde Toyota Springs

## PAT HINDE TOYOTA SPRINGS

BEST DEALS ON ALL  
HILUX & FORTUNERS

[WWW.PATHINDETOYOTASPRINGS.CO.ZA](http://WWW.PATHINDETOYOTASPRINGS.CO.ZA)

Page 54



## SENER360 TECHNOLOGIES

IRRIGATION SYSTEMS  
PERFECTED

[WWW.SENTER360.CO.ZA](http://WWW.SENTER360.CO.ZA)

Page 12



## PATHFINDER ZA

FIND YOUR THREAT  
BEFORE IT FINDS YOU

[HTTPS://PATHFINDERZA.APP/](https://pathfinderza.app/)

Pages 14-15



## SOYGRO

LEADERS IN MICROBIOLOGICAL  
PLANT AND SOIL INOCULANTS

[WWW.SOYGRO.CO.ZA](http://WWW.SOYGRO.CO.ZA)

Page 45



## PGK AGRIL

ANIMAL HEALTH,  
FEEDS & SCANNING

[WWW.PGKAGRI.CO.ZA](http://WWW.PGKAGRI.CO.ZA)

Page 19



## STAALBOER

COST EFFECTIVE RESERVOIRS  
ANYWHERE IN THE WORLD

[WWW.STAALBOER.COM](http://WWW.STAALBOER.COM)

Page 57



## PIKET IMPLEMENTS

RELIABLE PLANTERS & DRILLS

[WWW.PIKET.CO.ZA](http://WWW.PIKET.CO.ZA)

Back Cover



## SULKY PRECISION FARMING

PRECISION FARMING

[WWW.HARDI.CO.ZA](http://WWW.HARDI.CO.ZA)

Page 49



## PLASTIC IDEAS WESTERN CAPE

PLASTIC CRATES

[WWW.PLASTICCRAVES.CO.ZA](http://WWW.PLASTICCRAVES.CO.ZA)

Page 45



## SWARTLAND SPUIJPOMPE

SPECIALISTS IN A  
VARIETY OF SPRAY PUMPS

[WWW.SWARTLANDSPUIJPOMPE.CO.ZA](http://WWW.SWARTLANDSPUIJPOMPE.CO.ZA)

Page 13



## PLATTELAND AGRIL

AGRICULTURAL IMPLEMENTS

[PLATTELAND.AGRIL@GMAIL.COM](mailto:PLATTELAND.AGRIL@GMAIL.COM)

Page 27



## SYNGENTA SA

BRINGING PLANT  
POTENTIAL TO LIFE

[WWW.SYNGENTA.CO.ZA](http://WWW.SYNGENTA.CO.ZA)

Pages 34-35 & 56



**TECHNOPOL**  
LIVESTOCK HOUSING  
& INSULATION  
[WWW.TECHNOPOL.CO.ZA](http://WWW.TECHNOPOL.CO.ZA)  
Page 16



**TURFMANZI  
BESPROEING**  
BRINGING IRRIGATION  
PROJECTS TO LIFE  
[WWW.TURFMANZIIRRIGATION.CO.ZA](http://WWW.TURFMANZIIRRIGATION.CO.ZA)  
Page 18



**TESSENDERLO KERLEY**  
UNLOCK SOIL'S FULL POTENTIAL  
[WWW.TESSENDERLOKERLEY.COM](http://WWW.TESSENDERLOKERLEY.COM)  
Page 19



**VALLEY IRRIGATION**  
THE LEADER IN PRECISION IRRIGATION  
[WWW.VALLEYIRRIGATION.COM](http://WWW.VALLEYIRRIGATION.COM)  
Pages 20-21



**THE SECURITY MECCA**  
POTCHEFSTROOM  
A-Z SUPPLIERS  
OF SECURITY EQUIPMENT  
[WWW.SECURITYMECCAONLINE.COM](http://WWW.SECURITYMECCAONLINE.COM)  
Page 57



**VISIONWARE**  
POULTRY LIGHTING.  
LIGHTING SOLUTIONS SINCE 1996  
[WWW.VLIGHT.CO.ZA](http://WWW.VLIGHT.CO.ZA)  
Page 59



**TILL MASTER**  
AGRICULTURAL MACHINERY  
[WWW.TILLMASTER.CO.ZA](http://WWW.TILLMASTER.CO.ZA)  
Page 55



**WATEX**  
REINFORCED HOISING  
[WWW.WATEX.CO.ZA](http://WWW.WATEX.CO.ZA)  
Page 44



**TOPCON**  
AGRICULTURE  
PRECISION AGRICULTURE  
[WWW.TOPCONPOSITIONING.COM](http://WWW.TOPCONPOSITIONING.COM)  
Page 43



**WES-TRANSVAAL  
SPUITPARTE**  
PARTS FOR SPRAYERS & PUMPS  
[SPUITPARTE@GMAIL.COM](mailto:SPUITPARTE@GMAIL.COM)  
Page 37



**TRACPARTS  
FOR AFRICA**  
TRACTOR PARTS FOR AFRICA!  
[INFO@TRACPARTS.CO.ZA](mailto:INFO@TRACPARTS.CO.ZA)  
Page 55



**YARA ANIMAL FEED**  
MANUFACTURER OF  
INORGANIC FEED PHOSPHATES  
[WWW.YARA.CO.ZA](http://WWW.YARA.CO.ZA)  
Page 43



**Silostop**  
Regular plastic

**Global Leader  
In Silage  
Management**

**LEADING edge**

**SILOSTOP**  
THE ULTIMATE OXYGEN BARRIER FILM

THE ULTIMATE  
OXYGEN  
BARRIER FILM

**100x**  
MORE EFFECTIVE  
THAN STANDARD  
PLASTIC COVERS

Andries Engelbrecht: 083 263 9675 | Werner van der Merwe: 083 700 2333



SCAN ME



## SPECIALISED WEIGHBRIDGE MANUFACTURER

Advanced technology and software in industrial weighing systems.

## SERVICE AND MAINTENANCE

Klerkscale was founded in 1958 to meet the high demand in weighing machines. We manufacture locally in order to serve Industry and Commerce throughout South Africa and its neighbouring countries.

Visit our website for more information.

[WWW.KLERKSCALE.CO.ZA](http://WWW.KLERKSCALE.CO.ZA)

- Road vehicle weigh bridges
- Off-road vehicle weigh bridges
- Axle weigh bridges
- Weighing software design
- Rail weigh bridges
- Container weigh bridges
- Heavy duty platform scales
- Weighing instrumentation
- Supply of weights
- Retail scales
- Calibration of scales
- Calibration of weights
- Food processing
- Food preservation
- Price printing scales
- Scale labels

+27 (0) 18 469 1371 | [INFO@KLERKSCALE.CO.ZA](mailto:INFO@KLERKSCALE.CO.ZA)



**KLERKSCALE** PTY(LTD)  
INDUSTRIAL WEIGHING EQUIPMENT





Agricultural Implements



© MES CON SA

## BEST QUALITY HAMMER MILLS AT THE BEST PRICES

FOR YOUR STRAIGHT FORWARD, WELL BALANCED AND AFFORDABLE AGRICULTURAL EQUIPMENT SINCE 1958

GENTAG specialises in the following:

- Fodder making equipment and agricultural implements.
- Waste management equipment: Wood chippers, shredders, grinders, tumble screens and windrow turners.
- Extruders and ram presses for producing a variety of briquettes.
- Pellets for domestic and industrial use.
- Plastic recycling machinery.
- Separation and cleaning screens.
- Ring and flat die pelletising machines.
- Pillow oval and round shape briquetting machines for domestic and industrial use.
- Charring kilns and retorts.
- Feeding and packing systems.
- Supply of complete installations of the above.



Visit our website at [www.gentag.co.za](http://www.gentag.co.za) for all of your agricultural needs.  
+27 (0) 18 431 1287 | +27 (0) 83 310 4928

## Op en Top Canopies

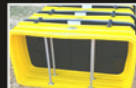
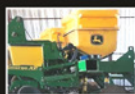


© MES CON SA

NAVRAE BY DIE VOLGENDE TAKKE:  
AFGRI, GWK, NTK, NWK MASCOR, SENWES, TWK EN VKB



'n Persentasie van ons opbrengs word geskenk om renoster stropery te bekamp.



## GEHALTE IS MY UITGANGSPUNT, KWALITEIT MY TROTS



DIE DAKKE KONING

Beskikbaar vir alle trekker modelle



Epos: [jpdupre@lantic.net](mailto:jpdupre@lantic.net)  
WhatsApp: +27 (0) 82 496 1775

OFFICE : +27 (0) 18 000 5162  
RULIE : +27 (0) 84 690 5525  
CINDY : +27 (0) 72 227 5522  
rulie@alphadamme.co.za  
alphadamme@gmail.com



Alpha Damme

## KWALITEIT STAALWERK



'n "Verskuifbare Lam Afrondings Kraal" is n 6m x 4.5m x 1.5m hoë struktuur met 300mm x 100mm wiele. Dit is verskuifbaar grootliks vir higiëniese doeleindes, maar ook sodat indien dit op weiding geplaas word, dit oorbeweiding voorkom.

Daar kan tot 40 lammers op 'n slag in die kraal wees. Addisionele water- en voerbakke kan aan die kant van die kamp geheg word sodat geen persone die kraal hoef binne te gaan nie.



### ONS MAAK:

- Motorafdakke
- Hekkies
- Balustrades
- Staal meubels
- Omheinings
- Tenkstanders
- Staal strukture
- Toerusting vir plaashantering

VRA GERUS 'N  
KWOTASIE AAN



SCAN ME

© MES CON SA



# HYDRO SOLUTIONS

WATER AND SOLAR TECHNOLOGIES



## NEW Multiflow AC/DC

### Hybrid Pump

Works with AC or DC Power

- High Volume Pump with flow rate of up to 10 000 liter /hour
- High Head of up to 130 meters
- Promotion includes Pump, Motor, Smart Controller & 4 x 330w Solar Panels



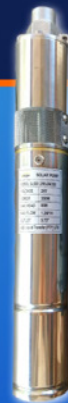
4 x 330W  
Solar Panels

Now  
Only

# R35900



1 x 270W  
Solar Panel



2 x 270W  
Solar Panels

### 180w Solar DC Pump Set

- Set includes: Motor, Pump, Control Box, 270w Solar Panel, Level Sensors.
- Easy to install.
- Maximum Head: 50m
- Maximum Flow: 1500 litres / hour
- This pump can deliver up to 840 l/h @ 30m head.

Now  
Only

# R10990

Incl

### 400w Solar DC Pump Set

- Set includes: Motor, Pump, Control Box, 2 x Solar Panels, Level Sensors.
- Easy to install
- Maximum Head: 80m
- Maximum Flow: 1400 litres / hour
- This pump can deliver up to 480 l/h @ 60m head.

Now  
Only

# R14990

Incl

VISIT OUR STORE IN PTA EAST

📞 **012 807 3256**



[sales@hydropumps.co.za](mailto:sales@hydropumps.co.za)

[www.hydro-solutions.co.za](http://www.hydro-solutions.co.za)

## WHY IS THE DETAIL SO IMPORTANT WHEN TALKING ABOUT WATER APPLICATION WITH CENTER PIVOTS?

Crops are expensive to plant. If you want the highest possible yield there are a few very important factors to consider; nutrition, water, climate, etc. As this discussion is about water we will focus on detail how to irrigate as effectively as possible. This is no simple matter as effectiveness can be broken up into the following:

- The basic reliability of the machine; being there when you need it to perform! Although this is only the carrier of the very important sprinkler system an unreliable machine will leave the best sprinkler system worthless.
- The choice of a sprinkler package is one of the most important factors to consider. There are mainly three international suppliers manufacturing sprinkler systems for center pivots. All three companies manufacture cheaper as well as more expensive sprinklers for center pivot use.

### Why should you not cut on your sprinkler system spending?

A static sprinkler is a cheaper simple option but has an inherent problem to control droplet sizes. Suppliers have used various techniques such as stream patterns, etc. to break the water streams up in a narrower band of droplet sizes (Too coarse will compact the soil and too small will dramatically increase evaporation). On the other end of the price range you will mostly find sprinklers with movable distribution pads. The reason for this is firstly to increase the length of throw, increasing the infiltration of water in the soil by placing the water over a larger/wider area. The second reason is to "cut" the water in more evenly sized droplets. Achieving this has the following advantages. As mentioned before, too small droplets have a large evaporation loss effect; too large droplets can compact the soil. The art is in achieving the highest percentage of the ideal droplet sizes, cutting down on evaporation (up to 40% compared to some cheaper static or overhead sprinkler systems). Cheaper sprinklers cannot achieve this and have a wider variety of droplet sizes; some evaporating and others compacting the soil with a small percentage actually fitting the ideal droplet size range.

An even distribution of droplets under the complete sprinkler area is as important to the ability to have the lowest run off and the most water-in-the-soil results. With a cheaper static sprinkler water is concentrated more on the outer ring of the spray pattern, therefore concentrating water on a smaller area compared to evenly distributed droplets under the whole area. Only the best of the best products can achieve the above advantages in one product. These sprinklers usually run at 15psi (10.5 Bar) or 10psi (0.7Bar). Amazingly enough, one of the manufacturers



© MESS CON SA

managed to effectively achieve the above at a sprinkler pressure of not only 10psi (0.7Bar) but also at 6psi (4.2 Bar)! The lower operating pressures result in a direct saving in energy required to pump the water to the center pivot and the precisely "engineered" droplet sizes actually getting the pumped water in the soil where it is required, more effectively. Losses of cheaper sprinklers have been measures to be as high as 43%.

### Water scheduling

Irrigating the correct amount of water at the correct time is vital to the health and maximum performance of any crop. It is known that to under irrigate will have a negative effect on growth, crop performance and therefore yield. What is not as commonly known is that to over irrigate not only requires more unnecessary energy and leaches out nutrients, but a crop over irrigated will go into a rest period until the surplus water, more than field capacity, has been used or drained away, causing a loss of growth time. Having less growth time in a season will negatively impact on the yield.

To effectively achieve correct irrigation within the minimum and maximum acceptable levels, the operator must know the amount of water in the soil at any given time. By using a multi-level soil moisture probe or similar this can effectively be managed without any under or over irrigation. Correct water management reduces power usage while simultaneously increasing yield.

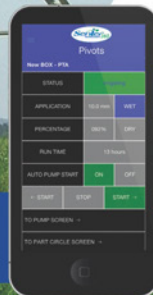
## Your SENTER 360 is online...are you?



YOU ALREADY TRUST US FOR...

- Having the strongest structure in the industry
- Best reliability
- The best sprinkler packages

Terms and conditions apply  
Our standard control system has **comprehensive cell/internet communication abilities**  
No monthly/yearly subscription costs **[ZERO!]**



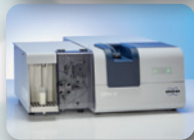
For best service contact us at +27 (0)18 469 1331 or +27 (0)82 564 5955 or [www.senter360.co.za](http://www.senter360.co.za)



## Spectroscopic Solutions for the Milk & Dairy Industry



**MIRA – IR Milk Analyzer**  
Pre-calibrated IR analyzer for raw milk, standardized milk, cream and whey.



**MPA II – One for all**  
Single instrument solution for all dairy applications of liquid, semi-solid and solid products.



**TANGO – Analysis to go**  
FT-NIR spectrometer with touch screen operation and easy user interface.

**Contact us:**

Web: [www.bruker.com/dairy](http://www.bruker.com/dairy)  
Phone: +27 11 463-6040  
Email: [info.za@bruker.com](mailto:info.za@bruker.com)



# NETAFIM™

GROW MORE WITH LESS

INVEST IN SMART AND TRUSTED PRECISION IRRIGATION SOLUTIONS



Tel: +27 21 987 0477  
[infoza@netafim.com](mailto:infoza@netafim.com) • [www.netafim.co.za](http://www.netafim.co.za)



**SWARTLAND SPUITPOMPE**



**ARVIPO SNOEISKÊR**  
Arvipo snoeiskêre is 'n batterypak snoeiskêr en is beskikbaar in Suid-Afrika vanaf 2012. Die snoeiskêr kom met verlenging stokke van 1.5 meter.

[WWW.SWARTLANDSPUITPOMPE.CO.ZA](http://WWW.SWARTLANDSPUITPOMPE.CO.ZA)

TEYME GALIA



TEYME OOR DIE RY-SPUITPOMP



TEYME GTE



RS SPUITPOMP



Die Teyme Galia is 'n dubbel ry spuitontwerp om in skuinstes te kan spuit en kan tot snelhede van 8.5km/h spuit. Spuitpomp beskikbaar in 2000lt.

Die Teyme oor die ry-spuitspomp is vir gemaklike en koste besparing van 45% op wingerd spuitprogramme, brandstof en tyd. Die pomp is beskikbaar in 1000lt, 1500lt en 2000lt.

Die Teyme GTE spuitpomp is beskikbaar in 2000lt, 3000lt en 4000lt spuitpomp en is gebruik vir sitrus- en neutbome van plusminus 20 meter hoog.

RS spuitpomp word plaaslik vervaardig vir die afgelope 10 jaar. Die spuitpomp is beskikbaar in 1000lt, 1500lt en 2000lt.

SAREL SWART: +27 (0) 82 554 2121 | ANDRE LAMBRECHTS: +27 (0) 73 303 4270  
Kantoor: +27 (0) 21 876 3510 | +27 (0) 21 300 0223 | Epos: [rasc@adept.co.za](mailto:rasc@adept.co.za)





# PATHFINDER ZA

ONE STEP AHEAD

## NEW GENERATION UNATTENDED

AFFORDABLE, LONG LIFE, LONG RANGE,

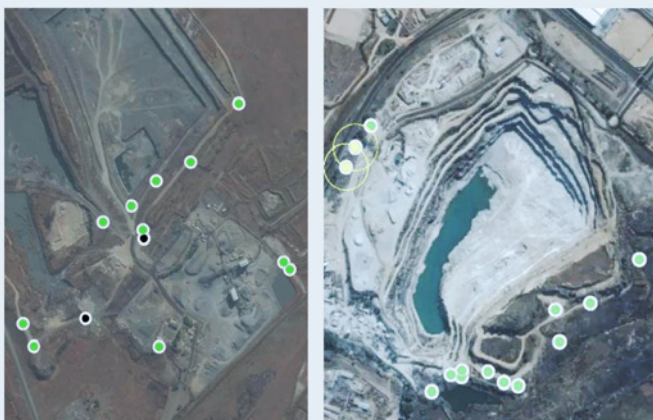
### WHY IT WORKS?

To be successful, a threat requires two things:

- surprise and
- manoeuver.

Pathfinder eliminates both by covertly detecting, identifying, and monitoring threats before they can cause damage or inflict harm.

Pathfinder provides what other sensors can't by allowing users to intervene against threats at the most opportune moment, making it appear as 'chance contact'. Detailed activity monitoring lets users easily keep the threat's tactics, techniques, and procedures intact while giving no indication that his activities have been compromised.



### DETECTS

Equipment  
Power Status



Foot  
Traffic



Vehicle  
Movement



### FOR A DEMONSTRATION

SMS the word "PATH"  
to 47052. Sms will cost you R2.00



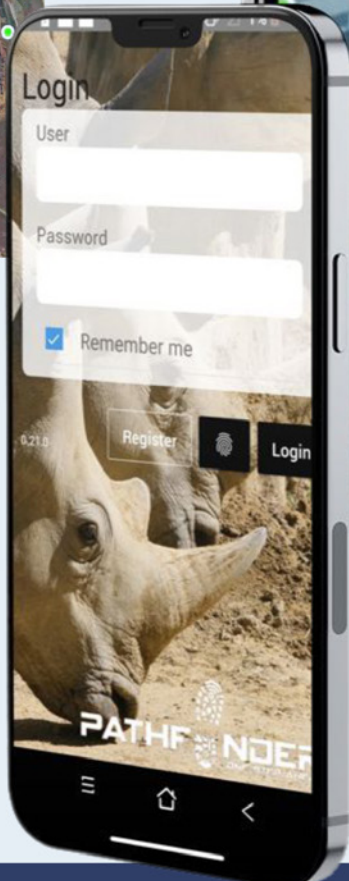
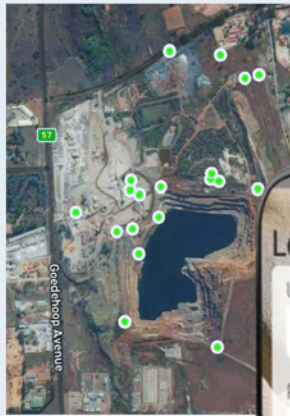
+27 (0) 86 040 1017 | +27 (0) 82 492 6736  
willem@pathfinderza.com

# FIND YOUR THREAT BEFORE IT FINDS YOU!




ARE YOU SEARCHING FOR AN AFFORDABLE, EASY SOLUTION TO PREVENT CRIME BEFORE IT HAPPENS?

## GROUND SENSOR (UGS)

BURIED SEISMIC SENSORS



### ALERTS

- MONITORING 
- DETECTION +2min 
- DETECTION 

SCAN ME



[www.pathfinderza.com](http://www.pathfinderza.com)





**TECHNOPOL SA**  
ENERGY SAVING MATERIALS

[www.technopol.co.za](http://www.technopol.co.za)

© MES CON SA

# LIVESTOCK HOUSING & INSULATION

## Industry Leaders in Expanded Polystyrene Products

- Manufacturers of expanded polystyrene products for domestic and export markets
- Bulk insulation and derived thermal insulation products
- Thermal insulation products for walls, roofs, ceilings & floor application



Contact us for more information:

Lammie de Beer

Tel : +27 (0) 11 363 2780

Cell : +27 (0) 82 443 4461





# ROSS 308 DELIVERS

- More Carcass Meat Yield
- Best Return on Your Investment
- Best Carcass Conformation and Meat Quality in the Industry

For more information,  
visit our website at:  
[www.rosspoultrybreeders.co.za](http://www.rosspoultrybreeders.co.za)



Ross Poultry Breeders  
Route 21 Office Park  
Block A Techno Link  
63 Regency Drive  
Irene  
Telephone: +27 16 366 0249  
e-mail: [info@rpb.co.za](mailto:info@rpb.co.za)

 Aviagen®

 ROSS

# BESPROEÏNG EN WATERBESTUUR-OPLOSSINGS

ONS BLAAS LEWE IN ENIGE BESPROEÏINGS-PROJEK

TMI Irrigation Solutions is 'n nasionale besproeiings spesialis sedert 2000 en ons spesialiseer in "Turnkey Solutions".

## ONS DIENSTE BEHELS:

Ontwerp | Invoer | Verskaffing | Installering | Oudit en Bestuur van besproeiingstelsels asook VFD pompstasies.

Ons integreer ook ons stelsels met solarpompe, boorgatpompe, waterfiltrering en damdeurlugting.

[www.turfmanziirrigation.co.za](http://www.turfmanziirrigation.co.za)



Tel: +27 (0) 21 975 5578  
Pastoralestraat 12  
Durbanville Business Park, Durbanville  
Wes-Kaap, Suid Afrika

Tel: +27 (0) 10 021 5097  
16 Barbecue Terrace Business Park,  
Dytchleystraat, Kyalami  
Gauteng, Suid Afrika

[info@turfmanziirrigation.co.za](mailto:info@turfmanziirrigation.co.za)



IRRIGATION  
& WATER MANAGEMENT  
SOLUTIONS





© MESS.COM SA

**PGK Agri fokus**  
primêr op die gesondheid en die bestuur van ekstensiewe, sowel as intensiewe boerdery, aangaande bees | skaap | varke en hoenders.

Ons lewer die volgende dienste:

- Diergesondheid (Ascendis Animal Health)
- Voeding (Sernick Animal Feeds)
- Dragtigheid (Samewerking met XRV XSeed op bees)

DIE REGTE OPLOSSING VIR DIE REGTE DIER OP DIE REGTE TYD



Skakel: Piet  
+27 (0) 81 093 9759



Kantoor : +27 (0) 58 303 8979  
Adri : +27 (0) 82 824 6438  
Das : +27 (0) 82 785 0006  
Freddie (Skare) : +27 (0) 73 346 1854

**ONS DIENS AAN DIE BOER**  
EENSTOP-VERSKAFFER VIR JOU BOEDERY EN BESIGHEID!

**FUCHS OLIE:** VIR "DUITSE BETROUBAARHEID"  
Enjinolie | Ratkasolie | Transmissie-olie | Hidroliese-olie | Smeermiddels  
Remvloeistof | Anti-Freeze | Handreiniger

**GRONDSLYTONDERDELE:**  
"Offset" | Disskottels | Beitel- en 'ripper'-skare | Ploegskare | Vlerkskare

**AANDRYWING:**  
Katrolle | Tandwiele | V-Bande | Kettinge | "PTO's" | Jukke | Buise |  
Elektriese Motors (SEW & Bonfiglioli) | Ratkaste | Laers | Seëls | Gordel  
PVC | Rubber

**BALDWIN FILTERS:**  
Lugfilters | Oliefilters | Hidroliesefilters | Transmissiefilters | Brandstoffilters |  
Verkoelingsfilters

**ALGEMEEN:**  
Dixon Battery | Soygro Produkte | Mieliemeel | Boule & Moere

**ONS MAAK DIT ONS BESIGHEID OM JOU BESIGHEID TE VERSTAAN!**



**AGRI-COM**  
Versekering Makelaars (EDMS) Bpk

ONS REPUTASIE BERUS OP DIE SPOEDIGE EN SUKSESVOLLE AFHANDELING VAN JOU EIS.

**'N GOEDGEKEURDE FINANSIËLE DIENSVERSKAFER**  
Met jare se ondervinding en ervaring in die versekeringsbedryf, spesialiseer ons in die volgende:

Oesversekering | Motor- en Huisinhoud | Geboue | Boere- en Besigheidsversekering | Trokke & Transito | Skole & Gastehuse/B&B.

Advies waarop jy kan vertrou!

Kobie: +27 (0) 83 628 5093  
Lanie : +27 (0) 79 401 1592

Ons het uitstekende markte vir die verkoop van droëbone!

- Graanskoonmaakdienste
- Versakking en verpakking van graan

© MESS.COM SA



**Thio-Sul®**  
12% N 26%S  
High concentration clear liquid

- 1 For starter or topdressing application
- 2 Improves nutrient use efficiency, crop yield and protein content
- 3 Compatible with broad range of other fertilisers



Treatment	Yield (T/ha)
15% Thio-Sul	~0.15
15% Thio-Sul + 15% NPK	~0.35
15% Thio-Sul + 15% NPK + 15% S	~0.45
15% Thio-Sul + 15% NPK + 15% S + 15% P	~0.55



Treatment	Protein (%)
15% Thio-Sul	~10.0
15% Thio-Sul + 15% NPK	~10.5
15% Thio-Sul + 15% NPK + 15% S	~11.0
15% Thio-Sul + 15% NPK + 15% S + 15% P	~11.5

The addition of 15% Thio-Sul can increase yield and protein by 10% or more

**Unlock the soil's full potential with thiosulfate based fertilisers:**  
A complete range of high concentration clear liquid N, K, Ca and S fertilisers that add unique benefits to your existing crop nutrition program



**Tessenderlo Kerley International**  
For trade, technical and retail enquiries contact Renier Boshoff  
renier.boshoff@tessenderlo.com  
Cell: +27 79 043 0597

www.tessenderlokerley.com



## Simple Selections for Smart Connections

Valley 365 gives you all the information you need right up front. It's the ultimate command center to experience full access to the Valley technology you depend on daily. Within Valley 365, you will find easy-to-navigate features to stay connected to your fields – anytime, anywhere.



### Forecast & Plan

Valley Scheduling improves water application, saving money and increasing your productivity with technology proven on 5 million acres (2 million hectares) worldwide.



### Monitor & Control

The tried-and-true power of AgSense technology gives you real solutions in real time so you can control everything from your pumps to your pivot and more!



### Optimize & Apply

Valley Variable Rate Irrigation (VRI) provides uniform and accurate water delivery to the crop, maximizing yield and maintaining the health of the plant.



### Valley Insights<sup>®</sup>

With Valley Insights, powered by Prospera, imagery detects plant stress so you can take action before it's too late.

## What's Here Today Will Be Here Tomorrow – Plus More

Valley 365 isn't a replacement for the technologies you've come to rely on for your irrigation, it simplifies how you use them.

Valley technologies support the strength of our industry-leading pivot structures. The pivot is the key source of water delivery, which remains the number one determinant of crop yield and is an integral part of connected crop management.

With technologies you've come to know and trust, and new technologies that will continue to help you grow, Valley will be there for all your operational needs. Advanced technology from Valley helps you optimize the data points you need.



## For the Future of Your Farm

At Valley, we invest in technology because we're invested in the future of our growers. With the rock-solid foundation of our tried-and-true technologies, Valley 365 will expand and evolve as the market demands.

This innovative software solution offers unlimited data storage, is extremely secure, and is customizable based on your changing needs. It's irrigation management that grows with you.

Get ready for Valley 365, the next-level solution for connected crop management. The time is now to own your tomorrow.

**Contact your Valley Dealer today!**

Connected Crop Management.  
Own Your Tomorrow.



## The Next-Level Solution

Get ready to take your farming technology full circle with Valley 365<sup>®</sup>. This single sign-on platform unites the best features of our top-rated remote management tools into one easy-to-use interface delivering real solutions.

We've taken the functionality of existing technology like AgSense<sup>®</sup>, Valley Scheduling<sup>™</sup>, Valley<sup>®</sup> Variable Rate Irrigation (VRI) and Valley Insights<sup>®</sup>, and integrated these tools into one location. Now you can access everything you need for crop management with a single sign-on. Valley 365 offers a simpler, more intuitive user experience, making it easier for you to harness the power of your data for greater profitability.



Elanco

Rumensin®

TRUSTED BY GENERATIONS

# A GENERATIONAL PRODUCT WITH NEXT-GENERATION SUPPORT.

Rumensin® has been trusted by generations of producers because we make more than a quality feed ingredient. As a team of dedicated experts, we make it our mission to adapt to your challenges so we can help contribute to the success of your operation.

Contact your sales representative to learn more  
or visit [TrustedByGenerations.com](https://TrustedByGenerations.com).

Rumensin helps beef and dairy animals get more energy from any ration. • Feedlot cattle: For improved feed efficiency.  
• Pasture cattle: For improved mass gain. • Beef cows: For improved feed efficiency.  
• Dairy cows: For increased milk production. For reduced severity of ketosis in lactating dairy cows.  
• Replacement heifers (beef and dairy): For improved mass gain. • Cattle: For the prevention of coccidiosis.

Rumensin 200 Registration number: G1818 (Act 36/1947). Composition: Monensin sodium 200 g/kg  
Elanco Animal Health, A Division of Eli Lilly (SA) (Pty) Limited, Reg. No: 1957/000371/07, N1 Business Park, Old Pretoria Road, Kosmosdal Ext 7, 0157  
Private Bag X119, Bryanston, 2021, Tel: +27 12 657 6200, Fax: +27 12 657 6216  
Rumensin™, Elanco™ and the diagonal bar logo are trademarks of Elanco™ or its affiliates. PM-2A-21-0078

Elanco

# STOCK THEFT ? PREDATORS ?



Get alarm calls when **DANGER** is detected



Live **GPS** tracking in app during an alarm



Just **ONE** collar covers a flock of 450 sheep

Tel : 028 212 3346



Download on the  
App Store

GET IT ON  
Google Play

# FARMRanger

LIVESTOCK SECURITY COLLARS

SHEEP. CATTLE. GOATS. HORSES.



Monitor spraying activity



Calculate driver productivity



Track fuel and water refills



Receive daily reports



Detect missed rows

**SPEAK TO US TODAY!**

CALL : 021 880 1163



[www.farmtrack.co.za](http://www.farmtrack.co.za)

# AGRI+SHADENET

  
**PlusNet**  
011 412 3954

The Agri + 40% Titanium shade net is our star product because it is suitable for most vegetables, fruits, flowers and plants.



For more information on our product range, contact us on 011 412 3954 or [nets@plusnet.co.za](mailto:nets@plusnet.co.za)  
[www.plusnetgotex.co.za](http://www.plusnetgotex.co.za)



# PLUSNET

## SHADE NET PROTECTS YOUR VALUABLE AGRICULTURAL INVESTMENT IN MANY WAYS

[WWW.PLUSNETGEOTEX.CO.ZA](http://WWW.PLUSNETGEOTEX.CO.ZA)

Greenhouse farming initially entailed glass houses with hydroponics systems to prolong the production cycle and obtain even quality, amongst others. When shade net production came into being for car ports and other usages, all of a sudden the light went up for greens, berries, table grapes, cherries, citrus, figs, flowers and nut producers that required protection against the harsh South African sun, severe hail storms, wind chafing and birds.

Much research went in the different types and colours of shade net as it has a direct effect on the particular crop it covers. Today, PlusNet is one of the foremost shade net

manufacturers that cater for agriculture, industry, homes and even camping equipment. The percentage of a shade net denotes its translucency and its colour has an effect on a particular crop or application. PlusNet's 40% shade net is specifically manufactured for the agricultural sector and is more suitable for all vegetable types.

The darker the net, the more shade it provides. Most plants do not fare well under darker nets as there is diffused sunlight, so very little photosynthesis takes place which means little growth. Under a 40% net, depending on the colour, various types of fresh produce grow and

produce excellent.

### Advantages of Undercover Fruit Farming:

Covering orchards with low-percentage shade nets, like PlusNet's 20% agricultural shade net can significantly improve the performance of the orchard / vineyard. Part of the responses can be attributed to the filtering of the light spectrum by the nets, and part is due to physical protection and creating a friendlier micro-climate. Improved external fruit quality is insured because of less sun burns and wind scars, smoother skin and better colouring. Furthermore, the low percentage shade nets reduce heat/chill stresses, offer enhanced photosynthesis and, importantly, better/less water usage.

PlusNet products offer hazard Protection which include protection from excessive solar radiation, protection from environmental hazards (wind, hail, sand-storms and ice rain) and protection from flying pests (birds, fruit bats and insects).

Every roll of PlusNet shade net carries a ten year guarantee against sun degradation.



For further information on your particular shade net requirements, please get in touch with PlusNet at: +27 (0) 11 412 3954 or at [nets@plusnet.co.za](mailto:nets@plusnet.co.za)

**Ocmis**

**HARD HOSE IRRIGATORS**

Versatile & cost effective method of irrigation.  
Ocmis Irrigators are a quality product engineered to perfection.



**ALL BLACK SYSTEM  
PIPES & FITTINGS**

- Reduce theft & corrosion
- Easy & cheap to repair
- Lightweight
- Easy conversion from other systems
- Resistant to chemicals & fertilizers



**IRRIGATION & MANURE GUNS**



**www.iunlimited.co.za**

**Pretoria – 012 736 2121**

**Cape Town – 021 948 1194**





**African  
Poultry  
Solutions**

© MES CON SA

**From the Farmer,  
To the Farmer**



**Agricultural  
poultry solutions  
for a productive,  
sustainable future**

**What's in the name?**

**Africa**

The African continent will be our focus point for marketing and distribution. The head office would be situated in South Africa.

**Poultry**

Although poultry would be our main priority we are also dedicated to any other agricultural project.

**Solutions**

To supply products is easy, but to find a solution to a specific need can be tricky. Our expertise in this area is unmatched!

+27 (0) 84 548 8004  
kobus@africanps.co.za

**www.africanps.co.za**



**HIGHVELD  
HONEY FARMS (PTY) LTD**

WWW.HIGHVELDHONEY.CO.ZA

© MES CON SA

Specialised supplier of:

- Honey
- Quality bee-hives
- Top quality swarms for Macadamia, Apple and Sunflower pollination.

Established in the 1960's, Highveld Honey Farms has grown into one of the largest honey producers in Southern Africa. We run approximately 8000 bee-hives in the summer rainfall area, moving the hives to different flowering crops as needed.

Pollinating macadamias for 10 years.

**WITHOUT BEES, THERE WOULD  
BE VERY LITTLE SOURCES OF  
FOOD ON THE PLANET.**



Janet: +27 (0) 11 849 1990 | Matthew: +27 (0) 81 746 1110  
janet@highveldhoney.co.za

**agrional** AFFORDABLE  
QUALITY

800L, 1000L, 1500L

800L, 1000L

600L

24 Disc/  
28 Disc

7 tine/ 9 tine

**PLATTELAND AGRI**  
**Ernst Scholtz**  
**072 845 6266**

Made with PosterMyWall.com



OLI®



# OLI MATERIAL FLOW SOLUTIONS PROVEN RELIABILITY

OLI provides a range of solutions for the feed and food sector.

Any product, from granular to powder, in the feed sector which must be stored, mixed or moved inside complex industrial processes.

OLI's solutions, such as external electric motovibrators, pneumatic vibrators, hydraulic vibrators and aerator pads, facilitates the production process of a vast range of products.



**THE BEST OF ITALIAN KNOW-HOW COUPLED WITH LOCAL KNOWLEDGE.  
WHEN YOU NEED IT, WHERE YOU NEED IT.**



## WORLDWIDE SUBSIDIARIES

OLI Australia	OLI Middle East
OLI Benelux	OLI Nordic
OLI Brazil	OLI Russia
OLI China	OLI South Africa
OLI France	OLI Spain
OLI Germany	OLI Turkey
OLI India	OLI Thailand
OLI Italy	OLI UK
OLI Malta	OLI USA



[WWW.OLIVIBRA.COM](http://WWW.OLIVIBRA.COM)

OLI SOUTH AFRICA  
Unit 14, Jan Smuts Business Park  
Jones Road, Jet Park, Gauteng, RSA

Office: +27 (0) 11 392 1054  
Peet Eksteen: +27 (0) 60 564 5560

[sales.southafrica@olivibra.com](mailto:sales.southafrica@olivibra.com)



© MES CON SA



*good chemistry*



**NULANDIS**<sup>®</sup>  
*unlocking nature's potential*

*is now trading as*

**AECI**<sup>®</sup>  
**PLANT HEALTH**

**After 50 years as a proud member of the AECI Group, Nulandis is now trading as AECI Plant Health. We are still focused on what matters most to growers by understanding their need and ambitions.**

*We will continue to:*



*DEVELOP sustainable and holistic solutions that enhance crop performance*



*STRIVE to unlock nature's potential while preserving the environment*



*ANSWER the consumer's call for access to food that is nutritious and safe*

SAME EXPERTISE . SAME PRODUCTS . NEW NAME .

**T:** +27 11 823 8000

**E:** [planthealth@aeciworld.com](mailto:planthealth@aeciworld.com)

**W:** [aeciph.com](http://aeciph.com)

**AECI**<sup>®</sup>  
**PLANT HEALTH**



# ROTRIXAFRICA

industries cc

## MECHANISED IRRIGATION SYSTEMS BUILT TO IRRIGATE AFRICA



© MES CON SA

**ANDRIES BOTHMA**

Cell: +27 (0) 79 959 3356

Email: salesr@rotrix africa.co.za

**WWW.ROTRIXAFRICA.CO.ZA**



## Start your adventure today!

www.bushwakka.co.za



### OFF-ROAD CAMPING TRAILERS AND 4X4 FITMENT CENTER

Jaco Putter:

Tel: +27 (0) 23 342 3438 | Cell: +27 (0) 82 442 1648  
jaco@bushwakka.co.za

© MES CON SA



## OMVATTENDE ANALITIESE DIENS VIR LANDBOUERS

Bemlab verskaf 'n betroubare ontledingsdiens en die tegniese ondersteuning aan ons kliënte sodat hulle die beste besluite kan neem

Kenmerke wat Bemlab die leidende diensverskaffer maak:

- Betroubare resultate: ISO 17025 akkreditering vir grond-, blaar-, water-, en vrugontleding
- Monsternemingsdiens: Landboukundiges en ander kundiges wat grondkartering doen
- Tegniese ondersteuning: Aanbevelings en tegniese advies word op aanvraag verskaf
- Gerieflikheid: Spesiale monstersakkies en gerieflike vervoeropsies van oral in die land word kosteloos aangebied
- 'n Omvattende ontledingsdiens: Plantpatologie en aalwurmontledings word verskaf
- Kliëntediens: 'n Kombinasie van vriendelike ontvangspersoneel, 'n toegewyde span en spoedige omdraaiing, verseker kliënte tevredeheid
- Goeie Pryse: Koste word fyn bestuur sodat kliënte die waarde wat gereelde analyses toevoeg, kan benut

Besoek ons webtuiste, of kontak ons:

www.bemlab.co.za | admin@bemlab.co.za | +27 (0) 853 1490

© MES CON SA



Part of the



group of companies



## TOP QUALITY AT THE BEST RATES

**DIY DAMS ALSO AVAILABLE | 10 YEAR WARRANTY**

Potable water tanks

Supplied with a certificate

4 x 2.3 m Zinc Tank (29 kl)	- R 26 600	8 x 2.3 m Zinc Tank (116 kl)	- R 65 900
6 x 2.3 m Zinc Tank (65 kl)	- R 44 600		

**PRICES INCLUDE:**

Roof | Zinc | 50 mm Outlet | Food grade dam liner | 50 mm Overflow | Installation and VAT. Delivery not included

Zinc Reservoirs

4 x 2.3 m Zinc dam (29 kl)	- R 19 500	8 x 2.3 m Zinc dam (116 kl)	- R 40 300
6 x 1.55 m Zinc dam (44 kl)	- R 22 650	12 x 2.3 m Zinc dam (261 kl)	- R 84 200
6 x 2.3 m Zinc dam (65 kl)	- R 29 670	14 x 2.3 m Zinc dam (354 kl)	- R 107 400

**PRICES INCLUDE:**

Zinc | Dam liner | 50 mm Outlet | 50 mm Overflow | Installation and VAT. Delivery not included

### ZINCAL DAMS - RESERVOIRS



Reservoirs  
up to 522 kl

### EARTH DAMS



HDPE liners  
available

Any size ZincAl dam, grain dam, ZincAl tank or lining can be manufactured on request. 0.8mm to 1.2 mm ZincAl sheets with a life expectancy of 2 - 4 times longer than that of traditional sheets are used. 850 GSM PVC linings are manufactured with the aid of a high-frequency welding process. Linings are UV resistant. Material of the same thickness is used for the walls and the floor. Should the thickness differ, you get your lining **free**.

Jannie: +27 (0) 72 600 0179 | Boet: +27 (0) 82 496 1934 | Office: +27 (0) 76 307 7573  
Email: sales@nwdamme.co.za | Website: www.nwdamme.co.za



SCAN ME



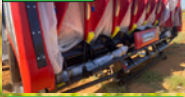


Finansiering nou ook beskikbaar:



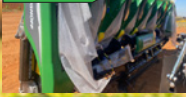
Vir meer besonderhede kontak Hertzog - 072 446 4645

Pryse BTW uitgesluit



Nuwe Geringhoff Mietletafels  
8-ry; 76 cm  
Pas op 'n Case stroper  
R315 000

Pryse BTW uitgesluit



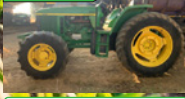
Nuwe Geringhoff Mietletafels  
8-ry; 76 cm  
Pas op 'n John Deere stroper  
R315 000

Pryse BTW uitgesluit



2004 John Deere 6420  
6922-Ure; 82 Kw  
R280 000

Pryse BTW uitgesluit



2006 John Deere 6603  
6100-Ure; 83 Kw  
R190 000

Pryse BTW uitgesluit



2004 New Holland Ts120  
10200-Ure  
R150 000

Pryse BTW uitgesluit



2010 New Holland Bb9070  
49 000 Bale gedoen  
R380 000

Pryse BTW uitgesluit



Nuwe KAT ekstra swaardiens  
Disse | 32 Skottel - R175 000 |  
40 Skottel - R250 000 |  
44 Skottel - R275 000

Pryse BTW uitgesluit



Nuwe KAT ekstra swaardiens  
Rolmoere | 6.2 m - R362 500 |  
7.5 m - R412 500 | 9.2 m -  
R450 000 | 12.5 m - R575 000

Vir meer inligting en foto's, besoek gerus ons webtuiste  
Termes en voorwaardes geld

[www.agricor.co.za](http://www.agricor.co.za)



Torpedo Plough 3 & 4 discs



Wheel Rake



Disk Offset



Post Digger



Field & Orchard Drum Mower



Furrow Plough



Mini Round Baler

Johannesburg Branch

Stand 258 Brunel Road Tulisa Park,  
Johannesburg, 2197

Telephone: +27 11 613 8711  
Fax: +27 11 623 1855

Zaahid 082 902 4433  
Sume 079 259 6570



Full Range of Agricultural Equipment

Cape Town Branch

11 Rand Road, Blackheath  
Cape Town, 8001

Telephone: +27 21 905 2260  
Fax: +27 21 905 2611

Nakkie 083 303 1161  
Adriaan 078 627 3459



Fertilizer Spreaders



Graders



Mounted Field Sprayer



Mounted Mistblower



Mounted Trailed Mist Blower



Operating Units



Pumps



Slashers

011 397 1313

JHB – 071 599 542(0) – 3

CPT – 071 599 5424

Blomfontein – 071 599 5425



[www.benetrax.co.za](http://www.benetrax.co.za)

44 Viewpoint Road

Bartlett

Boksburg

1459



YX828 Wheel Loader – 1.5 Ton

YX832 Wheel Loader – 2 Ton

YX638 Wheel Loader – 3 Ton

YX646 Wheel Loader – 4 Ton

YX657 Wheel Loader – 5 Ton

YX667 Wheel Loader – 6 Ton



ZE210E Excavator – 21 Ton

ZE260E Excavator – 26 Ton

ZE360E Excavator – 36 Ton

ZD160-3 Dozer – 18 Ton

ZD220-3 Dozer – 28 Ton



BTX-D25 Forklift – 2.5 Ton

BTX-D35 Forklift – 3.5 Ton

BTX-D50 Forklift – 5 Ton

BTX-D70 Forklift – 7 Ton

BTX-RT25 Forklift (Rough Terrain) – 2.5 Ton

BTX-RT35 Forklift (Rough Terrain) – 3.5 Ton

# Touchdown!

## en wen die stryd teen onkruid



### 3 redes om TOUCHDOWN FORTE® te kies:

- Dubbel bymiddel tegnologie verbeter opname vir effektiewe beheer van geharde onkruid
- Formulasie bied beter opname in droë toestande
- Mengbaarheid met ander produkte skep gemak en buigsamheid

**TOUCHDOWN FORTE® Hi Tech. Die slim keuse vir breë spektrum onkruidbeheer.**



 **TouchdownForte®**  
Hi Tech

 syngenta.

LEES DIE ETIKET VIR VOLLEDIGE BESONDERHEDE.  
TOUCHDOWN FORTE® Hi Tech bevat Gilfosaat (glisien) (Reg. nr. L7305, Wet 36 van 1947) VERSIGTIG.  
TOUCHDOWN FORTE® Hi Tech is 'n geregistreerde handelsmerk van 'n Syngenta Groepmaatskappy.  
Syngenta Suid-Afrika (Edms) Bepker, Privaatsak X60, Halfway House, 1685. Tel. (011) 541 4000. [www.syngenta.co.za](http://www.syngenta.co.za)  
© Syngenta Ag, 2000. Kopiereg op hierdie dokument word voorbehou. Alle ongemagtigde reproduksie word verbied.

 @SyngentaSA

## "TOUCHDOWN FORTE HI TECH – NIE NET ENIGE GLIFOSAAT NIE"

Francois Van Deventer – Technical Lead Herbicides & Fungicides Syngenta SA

Sedert eerste registrasie in 1974 in die VSA, het glifosaat die mees gebruikte sintetiese onkruiddoder wêreldwyd geword. Dit is tot 'n groot mate gedryf deur die ontwikkeling van glifosaat verdraagsame gewasse. In Suid-Afrika alleen is daar meer as 65 handelsname van produkte wat glifosaat as aktiewe bestanddeel bevat. Maar is alle glifosaat produkte dieselfde? Speel formulasie nie miskien 'n groter rol in die produk as wat meeste mense besef nie?

Eerstens speel die tipe sout formulasie 'n groot rol. Aangesien die glifosaat molekule 'n swak suur is, word dit altyd geformuleer as een of ander hoogs oplosbare monovalente sout (ammonium, dimetielamien, isopropielamien, kalium- of natrium sout) om die formulasie te stabiliseer. Die tipe soutformulasie dra ook by hoe effektief die aktiewe bestanddeel geabsorbeer word en in die blare penetreer. Die graad van aktiwiteit werking van glifosaat word bepaal deur hoe effektief absorpsie van glifosaat deur die teiken plant is. Absorpsie is nie deur die bank dieselfde vir alle onkruid spesies nie a.g.v. fisiologiese verskille.

TOUCHDOWN FORTE® HI TECH is 'n kaliumsout glifosaat formulasie van SYNGENTA®. Aangesien 'n kaliumsout formulasie die hoogste water oplosbaarheid van al die algemeenste glifosaat sout formulasies het, maak dit 'n hoë glifosaat suur konsentrasie (500g/L) vloeistof formulasie moontlik. Ook is die kaliumsout formulasie hoogs higroskopies, wat beteken dit neem voortdurend vog uit die omgewing op, om sodoende langdurige opname deur die plant te verseker asook verbeterde translokasie. Die verhoogde higroskopie kan dus direk gekoppel word aan 'n verhoogde intrinsieke aktiwiteit in onkruid.

Maar die tipe sout formulasie is nie die enigste eienskap wat bydrae tot verbeterde opname in teiken plante nie. Onkruid spesies het verskillende blaar oppervlak waslaag strukture. In sommige plante is die waslaag baie hidrofobies en stoot dit hoogs water oplosbare glifosaat molekules af. Die probleem kan voorkom word deur van benatters gebruik te maak. En dit is wat TOUCHDOWN FORTE® HI TECH uitsonderlik maak aangesien dit reeds 'n dubbel aksie benatter ingebou het in die formulasie. Die ingeboude, bioafbreekbare benatters in TOUCHDOWN FORTE® HI TECH kombineer die beste eienskappe van nie-ioniese (wat hoofsaaklik op die blaaroppervlak werk) en

kationiese (wat in die kutikula inbeweeg en die epidermis selle penetreer) benatters deurdat dit glifosaat opname aan help sonder om die epidermis selle te beskadig. Hierdie eienskap dra by tot die effektiwiteit van TOUCHDOWN FORTE® HI TECH aangesien epidermis selle nie beskadig word nie en dus word opname en translokasie nie belemmer nie (meeste kationiese benatters op hul eie beskadig gewoonlik epidermis selle, wat opname negatief kan beïnvloed). Aangesien glifosaat 'n sistemies metode van werking het, word die beste resultate met TOUCHDOWN FORTE® HI TECH behaal waar jonger, aktief groeiende onkruid wat nie onder stremming verkeer nie, gespuit word teen die aanbevole dosis.

Nog 'n kenmerkende formulasie eienskap van TOUCHDOWN FORTE® HI TECH wat gebruik vergemaklik, is die verminderde skuim vorming tydens meng. Die produk het ook 'n lae viskositeit, wat dit maklik maak om te pomp of uit te gooi.

Soos met alle glifosaat produkte, word TOUCHDOWN FORTE® HI TECH vinnig gedeaktiveer wanneer dit in aanraking met grond partikels kom - dus moet skoon water altyd gebruik word. Daarom kan oormatige stof tydens toediening (hetsy op die plante of agter die spuit) die produk se effektiwiteit nadelig beïnvloed. Waar harde water gebruik word of die kwaliteit onbekend is, word dit aanbeveel om die water eers met 0.5 - 2% v/v ammoniumsulfaat te behandel voor TOUCHDOWN FORTE® HI TECH ingemeng word. TOUCHDOWN FORTE® HI TECH is verenigbaar met CALLISTO®, DUAL® GOLD, METAGAN® GOLD, SORGOMIL® GOLD & LUMAX®, wat die produsent residuele beheer opsies gee van onkruid wat later mag ontkiem. TOUCHDOWN FORTE® HI TECH is veilig vir gebruik op glifosaat tolerante gewasse. Verwys altyd na die respektiewe produk etikette vir korrekte gebruiksaanwysings en beperkinge.

READ THE PRODUCT LABEL FOR FULL DETAILS.

TOUCHDOWN FORTE® HI TECH contains Glyphosate (Reg. no. L7305, Act 36 of 1947) CAUTION.

CALLISTO® contains mesotrione (Reg. no. L6795, Act 36 of 1947) CAUTION.

DUAL® GOLD contains S-metolachlor (Reg. no. L5749, Act 36 of 1947) HARMFULL.

METAGAN® GOLD contains S-metolachlor (Reg. no. L5748, Act 36 of 1947) HARMFULL.

SORGOMIL® GOLD contains terbuthylazine (Reg. no. L6221, Act 36 of 1947) CAUTION.

LUMAX® contains mesotrione, S-metolachlor & terbuthylazine (Reg. no. L7483, Act 36 of 1947) HARMFULL.

TOUCHDOWN FORTE® HI TECH, CALLISTO®, DUAL® GOLD, METAGAN® GOLD, SORGOMIL® GOLD & LUMAX® are registered trademarks of a Syngenta Group Company. Syngenta South Africa (Pty) Limited, Private Bag X60, Halfway House, 1685. Tel. (011) 541 4000.

*Bringing plant potential to life*



GENERIESE GLIFOSAAT EN 2,4-D MENGSEL LINKS EN TOUCHDOWN FORTE® HI TECH EN SORGOMIL® GOLD MENGSEL REGS

FOTO: CHRISTO VILJOEN

For quality performance, you need the right gear and the right team.  
**THINK BIG.**

FROM  
**R 799** /MONTH\*  
Internet connectivity

Get the quality satellite connection you need, no matter where you are.

Up to 10Mbps/3Mbps Unlimited Service. Flexible contracts with options that include free installation, free hardware, WiFi router and professional advice to guarantee the right internet solution.

Connect with Africa's quality network.



\*Terms and conditions apply.  
visit [www.maxwell.co.za](http://www.maxwell.co.za) or call us on +27 (0) 12 940 0660  
Partner of Eutelsat Konnect.



**PARATUS**  
Always Prepared

**WES TRANSVAAL**  
  
**SPUITPARTE**

**ONS VERSKAF ENIGE EN ALLE PARTE VIR SPUITE & POMPE**

**ONS VOORSIEN EN DOEN:**

- Tenks
- Gifpompe
- Doen Installasies
- Pype
- Snoeioerusting
- Spuitonderdele
- Klampe en vele meer

**ONS HERBOU & HERSTEL OOK:**

- Planters
- Vuurblussermasjiene
- Dieselkarre, en meer

Pieter: +27 (0) 60 960 6038 | +27 (0) 71 657 7526 | spuitparte@gmail.com



  
**CANCOR**  
 TRADING 7 CC  
 Reg No 2000/066754/23

SUPPLIERS OF:

- Pipes
- Fittings
- Valves
- Special Fabrications
- Pump Stations
- River Extraction Pipes

**24H BREAKDOWN SERVICE**

WWW.CANCOR.CO.ZA  
 Yvonne: +27 (0) 84 655 4907 | Thabo: +27 (0) 83 434 5133  
 Email yvonne@cancor.co.za

**IT'S ALL IN THE GENETICS**  
 For all of your cattle's artificial insemination needs.


**CRV**  
 BETTER COWS > BETTER LIFE

**CRV, leading in health and efficiency**

TEL: +27 (0) 51 444 3350 | EMAIL: ADMIN@CRVSA.CO.ZA

# FARM SUSTAINABLY FARM WITH FREQUENCY



## CRYSTAL TECHNOLOGY

### THE SOLUTION TO EFFECTIVE PEST CONTROL

Can you afford to farm without it?  
Pest control has never been this easy

- Species specific and environmentally friendly, cost effective.
- Control your pests simply by taking photos, the control is in your hands.
- From photos we can identify and then kill any pests on your farm anywhere in the world.
- Improve production and quality in an uncertain time at low cost.
- The only guaranteed pest control in the world and transmissions can be monitored on the farm.



**YOU CAN NOW FARM IN AN  
ECO-FRIENDLY AND SUSTAINABLE MANNER**

SCAN ME



See us online at [www.agrifrequencies.com](http://www.agrifrequencies.com)  
Jan du Plessis 082 429 4055 | [info@agrifrequencies.com](mailto:info@agrifrequencies.com)



Gebruik u nogsteeds

# Gif?

Beproef die goedkoop, gesonde alternatief:

## KRISTAL TEGNOLOGIE

KRISTALTEGNOLOGIE BIED OMGEWINGSVRIENDELIKE, GEVORDERDE SPESIESPESIFIEKE PLAAGBEHEER!

Kristalfrekwensies is onskadelik vir die mens en teiken spesifieke spesies, enige plek in die wêreld, chemies vry sonder om ander spesies soos bye en predatore aan te tas.

Agri Frequencies se gevorderde stelsel is aanpasbaar vir mutasies en variasies binne spesies.

Kwantumkoppeling word gebruik om die frekwensies onmiddellik op enige oppervlakte in die wêreld te plaas en is meetbaar.

Frekwensiebehandeling is baie meer doeltreffend as chemiese behandeling teen 'n fraksie van die

koste. Chemikalieë raak ook minder doeltreffend omdat die insekte weerstand opbou.

### Om die beste resultate te behaal?

Wanneer jy AgriFrequencies se oesbeskermingspakket neem is dit belangrik om akkurate inligting oor die insekte wat pla deur te stuur, sodat die regte frekwensies teruggestuur kan word.

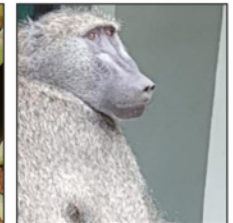
Gereelde foto's moet geneem en deurgestuur word en kleiner insekte of swamme kan deur middel van 'n mikroskoop waargeneem word. Ons maak dit maklik deur 'n laekoste mikroskoop beskikbaar te stel wat jy aan jou rekenaar koppel om die beeld vas te lê en deur gestuur kan word.



Kristal tegnologie kan ingespan word vir 'n baie wye reeks toepassings nl:

- Beheer virusse, bakterieë, swamme, plant- en diersiektes;
- Insek en plaagdierbeheer soos rotte, voëls ape en jakkalse;
- Stimulering van grondorganismes vir beter plantgroei en opbrengsgehalte;
- Verbeterdie gehalte en opname van voeraanvullings, mikro- en makroelemente en pas pH van die grond aan;
- Besproeiingslyne en druppers kan skoongemaak word van kalk-aanpaksels;
- Dood alge in damme en swambadens, chemiesvry;
- Duiwe en vlermuise kan verjaag word in 'n straal van tot 200 meter en,
- Huishoudelike produkte is beskikbaar vir plaagbeheer (Pest Vibes), beter groei en beskerming teen rypskade (Tuinfeëtjies), verminderde watergebruik (Aqua Struct), persoonlike gesondheid (Wellness-hangertjies) en 10-15% beter brandstofverbruik deur die strukturering van brandstof (Auto Struct).

Identifiseer jou plaag met behulp van 'n Agri Frequencies-mikroskoop. 'n Volledige pakket van insekbeheer en groei vir boere kos slegs R1 200.00 per hektaar per jaar. Korting vir groter plase beskikbaar!



© MES CON SA

Jan du Plessis: +27 (0) 82 429 4055  
info@agrifrequencies.com  
Instagram crystalcures\_1 en fb crystalcures1.



**SO MUCH IS OUT OF YOUR CONTROL, YOUR PROFIT SHOULDN'T BE.**

# **TAKE CONTROL**

**PROTECT YOUR PROFIT. DEFEND GRAIN QUALITY. SPEED THROUGH HARVEST.**

**STORAGE + CONDITIONING + MATERIAL HANDLING + STRUCTURES**



**T: +27 011 794 4455  
E: sales@gsiafrica.co.za**

**GSIAFRICA.CO.ZA**



**RHINO  
TRAILIES**  
(051) 448 4842

Louis van Niekerk  
+27 (0) 51 448 4842  
+27 (0) 51 448 8747  
+27 (0) 82 940 5325  
louis@triomf.co.za

STRONG  RELIABLE  TESTED

© MESS CON SA



Steel Rails:

- Rails for Hunting
- Rails for Loading
- Rails for Bakkies
- Rails for Light Transport Vehicles



[www.rhinotrailies.co.za](http://www.rhinotrailies.co.za)



**Hardi Navigator**  
*Class Leading Design*



The Sprayer

Cape Town Office:  
11 Rand Road,  
Blackheath, Cape Town  
Tel: +27 21 905 2260 Fax: +27 21 905 2611  
E-mail: [clive@hardi.co.za](mailto:clive@hardi.co.za); [abrie@hardi.co.za](mailto:abrie@hardi.co.za)  
Website: [www.hardi.co.za](http://www.hardi.co.za)

Johannesburg Office:  
258 Brunel Road, Johannesburg  
Tel: +27 11 613 9711 Fax: +27 11 623 1855  
E-mail: [zaahid@hardi.co.za](mailto:zaahid@hardi.co.za)  
Website: [www.hardi.co.za](http://www.hardi.co.za)



+27 (0) 21 851 0722  
+27 (0) 11 397 1211  
+27 (0) 31 001 7773  
[sales@avantsa.co.za](mailto:sales@avantsa.co.za)



**OPTIDRIVE™**

[www.avantsa.co.za](http://www.avantsa.co.za)

POWERED BY  
**Kubota**



**Ready to Rent**



**It doesn't matter where your business is. Mobile refrigerated containers can be the perfect fit to rent in Gauteng and the Western Cape.**

**These high-quality refrigerated containers are ideal for keeping temperature-sensitive produce cool. Big Box containers refrigeration solutions are available in 6- or 12m sizes and three categories namely standard units, 'blast freezers' and 'chillers'.**

**Rent yours today, by contacting us directly on 0861 44 7474.**

**Big Box, your refrigeration partner ideal for farms & warehouses.**

**[www.bigbox.co.za](http://www.bigbox.co.za)**



Knowledge grows



Verbind tot 'n wêreld sonder voedseltekort ... respek vir ons planeet.



As wêreldklas spesialiste in en verskaffers van anorganiese voerfosfate, aanvullings, konsentrate en voedingsgebalanseerde veevoer, streef Yara daarna om deur plaaslike kennis, internasionale kundigheid en deurlopende tegniese advies, kwaliteit en produktiwiteit, die voorste verskaffer van volhoubare gewasvoeding- en veevoeroplossings te wees wat die winsgewendheid van produsente ondersteun.

Met 'n toenemend groeiende wêreldbevolking, bly ons verantwoordelikheid om die wêreld te voed en die planeet te beskerm, ten spyte van ekonomiese hindernisse, beperkte bewerkbare grond en skaars hulpbronne.

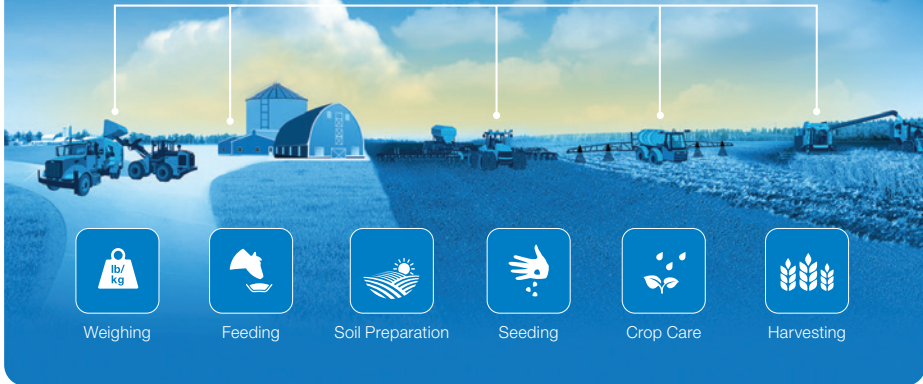
Om sterk verhoudings met ons kliënte te smee, om in mekaar te belê en vertrou op te bou, lei tot volgehoue sukses, want ons glo ... deur saam te werk, kan ons 'n werklike verskil maak.

Tel: +27 (0)31 910-5100 • E-pos: animal.nutrition.sa@yara.com

[www.yara.co.za/animal-nutrition/](http://www.yara.co.za/animal-nutrition/)

Yara Animal Nutrition (Edms) Bpk. Reg. No. 2001/025850/07

TAP Topcon Agriculture Platform



We have solutions to improve every aspect of your farm workflow, while increasing efficiency. Be precise and have the data you need by using Topcon Technology.

Boost your yields and productivity now.

Visit [www.topconpositioning.com/agriculture](http://www.topconpositioning.com/agriculture)



Email: [chelm@topcon.com](mailto:chelm@topcon.com) Tel.: +27832335497



We ALSO Manufacture & Supply:

- Pre packed Garden Hose Fittings
- SABS Mining Hose - and more.

**Visit our website for further details!**

Reinforced Hosing (Pty) Ltd

Tel: 011 769 2600

[www.watex.co.za](http://www.watex.co.za)



## NEW! CROP SPRAY HOSE

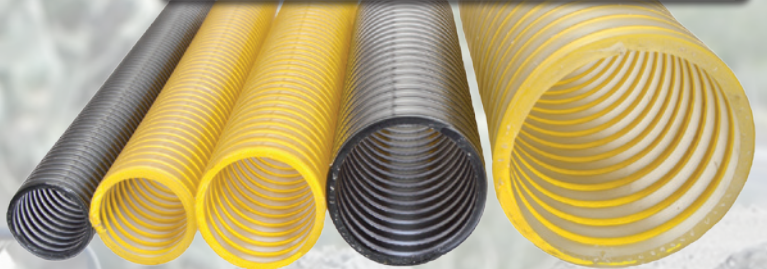
Liner Material: PVC NITRILE  
Cover Material: PVC BLUE  
Liner: White, Nitrile resistant to pesticides, fertilizer.

Application: Pesticide orchard spraying, compressed air lines, pneumatic tools, etc. to 4000 Kpa



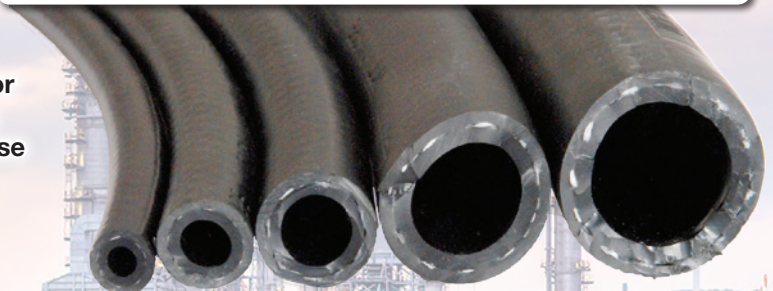
## NEW! SUCTION HOSE

Manufactured from virgin raw materials. Transparent for better visibility & more flexible! 25 - 150 mm diameter x 30m lengths. Available in black or yellow.



## NEW! MULTI-PURPOSE HOSE

High pressure Nitrile hose for petrol, diesel, oil, chemicals and general high pressure use to 2000 Kpa.  
5 - 25mm Diameter.



**CONTACT US FOR TECHNICAL DETAILS OR VISIT OUR WEBSITE**

6382 WATEX FP AGRU FOOD Suppliers Guide April/May 21

# Our C is for Crates and Colour



T. +27 11 613 8587 • C. +27 83 333 1224 (Gilda)

# Soygro

Sedert 1988

- Rhizobium entstowwe
- Biologiese voedingstofoplossing
- Biologiese swamdoders
- Biologie teen aalwurm
- Biologie teen insekte
- Gebalanseerde mikro-element blaarvoedings
- Spesialiteitsprodukte op aanvraag

**Tel: (018) 292 1907**  
**E-pos: soygro@iafrica.com**  
**Web: www.soygro.co.za**

**Wennerboere gebruik Soygro entstowwe!**



+27 61 502 2547  
www.afriqwater.co.za

Afriq Water supplies and manufacture agricultural irrigation products, with two product lines being the focus, namely the Quick Coupling HDPE Sprinkler System and Dripline.

## irrigating for a greener tomorrow



Since October 2020 Afriq Water manufactures dripline. To manufacture locally has many benefits, with the most important being able to supply on short notice, as opposed to the long lead times involved with imports



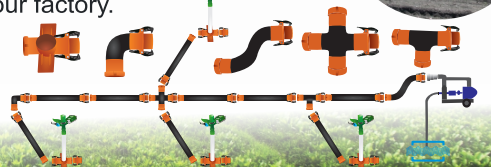
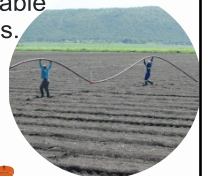
The HDPE (plastic) Quick Coupling Sprinkler Irrigation System is a modular system that is easily installed on site, and very movable between areas.

The dripline has a diameter of 16mmØ, with a variety of wall thicknesses, emitter spacing and flow rates, to suit your need



Afriq Drip now also comes in 12mmØ diameter!

The fittings are imported from Turkey and HDPE pipes sourced locally and assembled at our factory.



**10 YEARS  
EXPERIENCE  
PERFECTING  
GENERATORS**



# **JEPS GENERATORS** *& Field services Pty Ltd.*

REG NO. 2014/271528/07



**DSE ABB CHANGE OVER  
DEEP SEA CONTROLLER**



**ANY SIZE PTO  
GENERATORS**



**600 KVA GENERATOR**

**GRATIS KWOTASIES / FREE QUOTATIONS  
DIENSTE LANDWYD / SERVICES COUNTRY WIDE**

**MANUFACTURE 20 KVA TO 1.5 MEGA WATT  
GENERATORS**



**F** JEP'S Generators & Field services Pty Ltd    **W** [jepsgenerators.co.za](http://jepsgenerators.co.za)    **O** 018 011 3412  
**E** [jepsgen@gmail.com](mailto:jepsgen@gmail.com)    **L** Klerksdorp, North West    **S** 082 786 8015



**Our unique services:**

- Design and manufacture generator sets
- Building generators with trusted brands and components
- Manufacturing of complete synchronised systems
- Manufacturing electrical change-over panels
- Manufacturing customised engine control panels



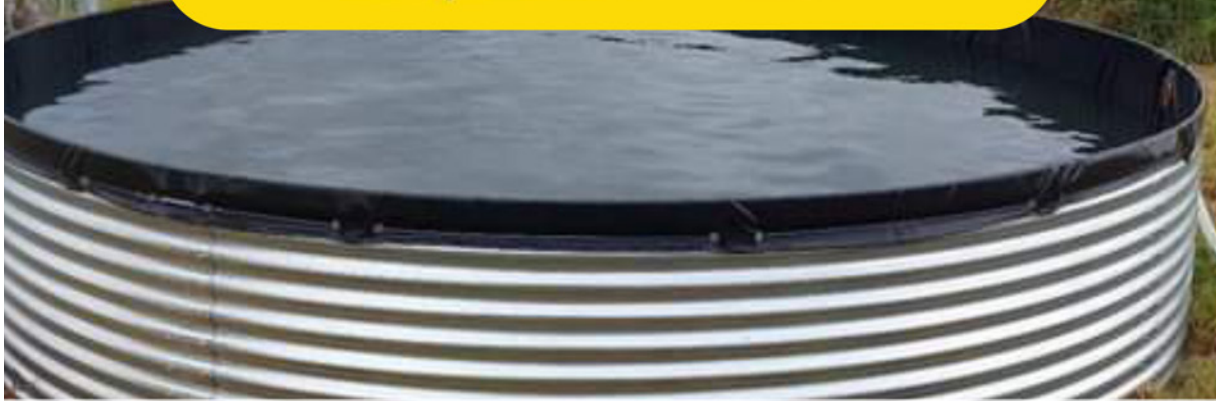
**Types of generators we manufacture:**

- Single Phase
- Three Phase
- Petrol
- Diesel
- PTO Driven



**Sizes of generators we manufacture: 20kVA - 1000kVA**





**COST EFFECTIVE QUALITY STEEL STRUCTURES**  
 WE STRIVE TO GIVE OUR CLIENTS A ONE-STOP WATER STORAGE AND IRRIGATION SOLUTION!

**AT ALPHA DAMME, WE MANUFACTURE TOP QUALITY PRODUCTS.  
 RELIABLE SERVICE AND MARKET RELATED COMPETITIVE PRICING IS OUR GOAL.**

- Potable water tanks
- Zinc dams
- Linings for concrete zinc dams
- Firefighting water storage
- Agricultural tanks
- Pivot irrigation
- Earth dam liners

**OUR SPECIALITIES**

Superior quality and flexible linings for all types of dams

Prevention of algae growth

Construction of corrugated and mesh wire dams

**ZINC DAMS  
 WATER TANKS  
 PLACE ORDERS  
 TODAY!**

We manufacture any size of zinc dams or linings on request.

Our liners are suitable for potable water tanks, a wide range of chemicals and liquid fertilisers.

We deliver nationwide, as well as to neighbouring countries.

Alpha Damme provides a 10 year warranty against faulty material and/or workmanship on all products.



OFFICE: +27 (0) 18 000 5162 | RULIE: +27 (0) 84 690 5525 | CINDY: +27 (0) 72 227 5522  
 rulie@alphadamme.co.za | alphadamme@gmail.com



Vat nr 4300254895 Reg Nr 2010/004759/23

74 Visagie Ave Pretoriusstad Nigel / Tel: +27 11 739 5726 / Fax: +27 86 241 2762 / [gerda@jbhwheels.co.za](mailto:gerda@jbhwheels.co.za)

## Manufacturers & Suppliers of Industrial, Agricultural & Heavy Duty Wheel Rims.

When purchasing a tractor it doesn't always seem to fit your specific needs. Here at JBH WHEELS we can convert your tractor rims(s) to your specific requirements. Special modifications & conversions on all leading models.



### Contact us:

Office 011 739 5726 – [gerda@jbhwheels.co.za](mailto:gerda@jbhwheels.co.za)

Sales Agriculture - Cobus 081 752 9181 [cobus@jbhwheels.co.za](mailto:cobus@jbhwheels.co.za) /

Barnie 083 698 3918 [barnie@jbhwheels.co.za](mailto:barnie@jbhwheels.co.za) /

Industrial & Earth Moving Hannes 083 391 5690

[hannes@jbhwheels.co.za](mailto:hannes@jbhwheels.co.za)

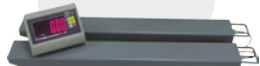


SCALERITE



**MICRO WEIGHBARS**

2000KG  
Bars: 1000mm x 180mm



**MICRO CATTLE SCALE**

2000KG  
L:3.2M H:2.9M W:2M



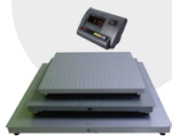
**MICRO DIGITAL PLATFORM SCALE**

300KG  
VARIOUS PLATFORM SIZES



**MICRO INDUSTRIAL PLATFORM SCALE**

3000KG



0861 SCALES

WWW.SCALERITE.CO.ZA



WWW.SCALERITE.CO.ZA  
SALES@SCALERITE.CO.ZA

6 MAIN REEF ROAD, BENROSE, GAUTENG

0861 SCALES  
011 618 2554

**SULKY**  
Precision Spreaders

**SULKY**  
Improved Productivity in Spreading

Cape Town Office:  
11 Rand Road,  
Blackheath, Cape Town  
Tel: +27 21 905 2260 Fax: +27 21 905 2611  
E-mail: clive@hardi.co.za; abrie@hardi.co.za  
Website: www.hardi.co.za

Johannesburg Office:  
26 Brunel Road,  
Tulisa Park, Johannesburg  
Tel: +27 11 613 8711 Fax: +27 11 623 1855  
E-mail: zaahid@hardi.co.za  
Website: www.hardi.co.za



Why you should do business with an  
**APAC registered fresh produce agent**

- You obtain a **better price** through the price forming mechanism;
- Having full **transparency** of sales transactions;
- Receive payment within **5 days**;
- Your money is kept safe in a **trust account**;
- Protection via the **fidelity fund**;

**DO YOU STILL WANT TO DO BUSINESS WITH YOUR PARASITE AGENT?**

www.apacweb.org.za



Tel: (011) 894-3680  
087 095 1335

# From Producer to the World



## AN EXTENSIVE RANGE OF PASTURE, FORAGE & FIELD CROP SEEDS

to help support your farming operation

Improve your yield with Agricote<sup>®</sup>, coated seeds that offers better seed to soil contact, improved survival of seedlings through added nutrition.



**AVAILABLE SEED:** Teff • Babala • Forage Sorghum • White Buffalo Grass\*  
• Blue Buffalo Grass\* • Bristle Grass\* • Smuts Finger Grass\* • Rhodes Grass\*  
• Eragrostis\* • Bermuda\* • Kikuyu\* • Paspalum\* • Cowpea • Dolichos Bean •  
Lucerne\* • Vetch • Clover • Cocksfoot • Rye Grass • Rye • Oats • Japanese Radish  
• Open Pollinated Maize • Ground Nut • Dry Bean • Grain Sorghum • Sunhemp

*\*Agricote treated seeds*



Advance Seed

**Johannesburg:** 8 Jacobs Street, Chamdor, Krugersdorp, South Africa, 1740

Tel: +27 11 762 5261 • Fax: +27 11 762 4111

**Cape Town:** Tel: +27 21 552 0456 • **Kwa-Zulu Natal:** Tel: +27 33 346 0639

sales.za@agtfoods.com • www.agtfoods.co.za





058 1100 100

Naas

083 500 7628

Braam

084 440 5854

Jacques

072 357 5787

Henrico

084 392 0418

Vervangende onderdele vir / Replacement parts for:

\*Werkwinkel / Workshop

\*\*Ingenieurswerke / Engineering



MASSEY FERGUSON



NEW HOLLAND



JOHN DEERE



6 Thomson Street, Bethlehem FS



sales@naspq.co.za

# DURABLE WATER BARROW



- Quality endurance
- 60L capacity
- Steel frame
- Solid rubber wheel
- Easy release tap



© MES CON SA

**Op en Top  
Canopies**

## CONTACT DETAILS

Email: [jpdupre@lantic.net](mailto:jpdupre@lantic.net)

WhatsApp: +27 (0) 82 496 1775



Logistics Transport Globally

SAFE, SMOOTH AND RELIABLE  
FREIGHT MANAGEMENT SOLUTIONS



SCAN ME



[info@ltgfreight.co.za](mailto:info@ltgfreight.co.za)  
[www.ltgfreight.co.za](http://www.ltgfreight.co.za)

**WE DELIVER A SUPERIOR AND PERSONALISED  
FREIGHT AND LOGISTICS SERVICE**

# Why it makes sense to choose LTG to be your Logistics Service Provider

Textile, FMCG and various other customers.

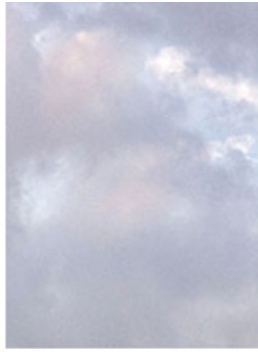
- Choose a logistics company who has a defined organisational structure – from management to the driver who understand company values – at LTG we can assure you of this.
- Choose a logistics company who provides value-added services i.e. updated daily reports on all shipments, one controller dedicated to your account with a manager on stand-by and service follow-ups – this is what we unconditionally offer at LTG as you are not just a number.
- Choose a logistics company who understands the customer's business and needs – we make a point of knowing your company and staff.
- Choose a logistics company who has the right relationship with regards to special requirements to streamline your business – at LTG we can assure you that we do go the extra mile!
- Choose a logistics company with efficient data management to ensure correct shipment procedures i.e. Customs, Ports & Carriers – we have a transparent communication method which can give the customer ease of mind on where their shipment is.
- Choose a logistics company who can do shipments in various trade lanes – at LTG we do not specialise in a certain trade lane, we are versatile and have Agricultural, Automotive, Engineering,

- Choose a logistics provider who will be reliable and be part of a global freight network – we can offer this to you as LTG is part of a network with access to 9355 member offices in 192 countries across the world.



CHOOSE LTG LOGISTICS - WE CAN DO THIS AND SO MUCH MORE FOR YOU!

**TO LTG YOU ARE NOT JUST A NUMBER,  
YOU ARE A VALUED BUSINESS PARTNER!**



**TOYOTA**

**Pat Hinde Toyota Springs**

Ivan van der Schyff  
+27 (0) 11 812 1030  
+27 (0) 82 800 0195

# BEST DEALS ON ALL HILUX & FORTUNERS

We deliver nationwide!

**CONTACT US NOW!**

[WWW.PATHINDETOYOTASPRINGS.CO.ZA](http://WWW.PATHINDETOYOTASPRINGS.CO.ZA)

SCAN ME

125 2nd Street, Springs, South Africa



Office - 016 365 6369

Whatsapp Only: 082 871 2458

- New & 2nd Hand Spares
- Service & Rebuilds
- Transport / Export
- All Tractor Models

tractorparts4africa@gmail.com

117 Kapokblom Str, Highbury, Randvaal  
Next to the R59 Highway



NEW HOLLAND



JOHN DEERE



MASSEY FERGUSON

FIAT



Case IH



**TPA** Rollback & Transport services  
info@tracparts.co.za

**ML MOTORLAND** Klerksdorp

Besoek gerus ons webblad  
[www.motorlandklerksdorp.co.za](http://www.motorlandklerksdorp.co.za)

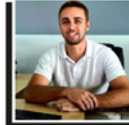
### HUIS VAN KWALITEIT GEBRUIKTE MOTORS



PIETER BOOYSEN EN SY SPAN NOOI  
JOU UIT OM HULLE WYE REEKS VAN PUIK  
GEBRUIKTE MOTORS TE KOM BESIGTIG.

43 Buffeldoringweg, Wilkoppies in Klerksdorp

Ons voertuigvoorraad is van hoogstaande gehalte, met volledige diens- en waarborgeskiedenis, spaarsleutels en 'n 81-punt-onderzoek word gedoen om te verseker dat alle meganiese komponente in 'n goeie werkende toestand is. Ons bied interne finansiering van alle groot banke, wat 'n spanningrye transaksie van begin tot einde verseker. Pieter Booysen en sy span pogg om 'n uitstekende vlak van klientetevredenheid te handhaaf, en daarom word elke voertuig van Motorland Klerksdorp met 'n meganiese waarborg van 2 jaar - onbeperkte kilometer verkoop.



PIETER BOOYSEN

Pieter Booysen  
+27 (0) 083 555 4949  
pieter@motorlandklerksdorp.co.za



# TILL MASTER

Office: +27 (0) 33 394 4543  
Fax: +27 (0) 33 394 2278

216 Victoria Road, Pietermaritzburg

**MANUFACTURERS &  
SUPPLIERS OF QUALITY  
AGRICULTURAL  
MACHINERY**

SCAN ME

[www.tillmaster.co.za](http://www.tillmaster.co.za)



VISIT OUR WEBSITE FOR MORE PRODUCTS...

ERLO DREWS: +27 (0) 83 320 0698

# sommige dinge is net beter verpak



## 3 redes om KARATE ZEON® te kies:

- Geënkapsuleerde aktiewe bestanddeel vir meer omgewingsvriendelike insekbeheer
- Beskerm elke saailing en verkry die beste stand
- Ingeboude UV-skerm wat 'n langer nawerking verseker

**Die slim keuse vir die beheer van snywurms.**



syngenta.

LEES DIE ETIKET VIR VOLLEDIGE BESONDERHEDE  
KARATE ZEON® 10CS bevat lambda-sihalotrin (Reg. Nr. L9023, Wet Nr. 36 van 1947), SKADELIK.  
KARATE ZEON® 10CS is 'n geregistreerde handelsmerk van 'n Syngenta Groepmaatskappy.  
Syngenta Suid-Afrika (Edms) Beperk, Privaatsak X60, Halfway House, 1685. Tel: 011 541 4000.  
©Syngenta Ag, 2000. Kopiereg op hierdie dokument word voorbehou. Alle ongemagtigde reproduksie word verbied.  
@SyngentaSA | www.syngenta.co.za

   @SyngentaSA | www.syngenta.co.za





Access Control  
Alarm Systems  
CCTV Products  
Electric Fencing

Intercoms  
Magnetic Locks  
Mechanical Locks  
Garage and Gate Automation

Power Supplies  
Batteries  
UPS's and Solar Solutions  
Remotes

Receivers  
GSM Units  
Security Hardware  
Cabling and Tools

+27 (0) 18 293 2103 | sales.potch@secmec.co.za | www.securitymeccaonline.com



**STAALBOER**



**WATER TANK STANDS**

- 2.5KL , 5KL AND 10KL STANDS
- HEIGHTS FROM 1.5M UP TO 12.0M

**STEEL PANEL RESERVOIRS**

- 15KL UP TO 4 000KL
- HEIGHTS FROM 1.3M UP TO 6.1M
- BETTER RESISTANCE TO WIND DAMAGE
- 25 YEAR LIFE EXPECTANCY

**STEEL DOME ROOFS**

- AVAILABLE IN ALL RESERVOIR SIZES
- FULLY HOT DIP GALVANISED
- DESIGNED FOR WIND SPEED UP TO 140KM/H
- SHADE NET COVERS AVAILABLE ON ALL RESERVOIRS

[WWW.STAALBOER.CO.ZA](http://WWW.STAALBOER.CO.ZA)

**SAVE TODAY!**

**COST EFFECTIVE 10 YEAR WARRANTY ENGINEER DESIGNED**

OUR EXPERT TEAMS ARE AVAILABLE TO DO INSTALLATIONS COUNTRY WIDE AND CROSS BORDER

✉ [ADMIN@STAALBOER.CO.ZA](mailto:ADMIN@STAALBOER.CO.ZA)  
☎ **+27 (0)12 010 0095** **PRETORIA**

Elanco

Rumensin®

TRUSTED BY GENERATIONS

# A GENERATIONAL PRODUCT WITH NEXT-GENERATION SUPPORT.

Rumensin® has been trusted by generations of producers because we make more than a quality feed ingredient. As a team of dedicated experts, we make it our mission to adapt to your challenges so we can help contribute to the success of your operation.

Contact your sales representative to learn more  
or visit [TrustedByGenerations.com](https://www.TrustedByGenerations.com).

Rumensin helps beef and dairy animals get more energy from any ration. • Feedlot cattle: For improved feed efficiency.

• Pasture cattle: For improved mass gain. • Beef cows: For improved feed efficiency.

• Dairy cows: For increased milk production. For reduced severity of ketosis in lactating dairy cows.

• Replacement heifers (beef and dairy): For improved mass gain. • Cattle: For the prevention of coccidiosis.

Rumensin 200 Registration number: G1818 (Act 36/1947). Composition: Monensin sodium 200 g/kg

Elanco Animal Health, A Division of Eli Lilly (SA) (Pty) Limited, Reg. No: 1957/000371/07, N1 Business Park, Old Pretoria Road, Kosmosdal Ext 7, 0157

Private Bag X119, Bryanston, 2021, Tel: +27 12 657 6200, Fax: +27 12 657 6216

Rumensin™, Elanco™ and the diagonal bar logo are trademarks of Elanco™ or its affiliates. PM-2A-21-0078

Elanco

**ehd** COMPONENTS 2005  
 (PTY) LTD  
 1/2 ENGINE & HEAVY DUTY COMPONENTS



**Distributors of Diesel Engines, Generator, Construction Equipment & Heavy Duty Diesel Engine Replacement parts**

**Johannesburg Head office**

Tel: 011 870 5000  
 ehd@ehd.co.za  
 sales@ehd.co.za

**Durban**

Tel: 031 700 1160  
 ehd.dbn@ehd.co.za  
 sales@ehd.co.za

**Bloemfontein**

Tel: 051 430 5404  
 ehdbloem@ehd.co.za  
 sales@ehd.co.za

**Cape Town**

Tel: 021 510 0567  
 ehdcapetown@ehd.co.za  
 sales@ehd.co.za

Manufacturer's names, numbers, symbols, photos and descriptions are used for reference purposes only and it is not implied that the parts referred to are the products of those manufacturers. Warranty conditions are available on our website [www.ehd.co.za](http://www.ehd.co.za)

**POULTRY LIGHTING**

Manufactured in South-Africa



**LED Lighting Solutions**

- Agricultural
- Farm Security
- Warehouse
- Outdoor



[www.vlight.co.za](http://www.vlight.co.za) 082 571 4738

**SALES:**

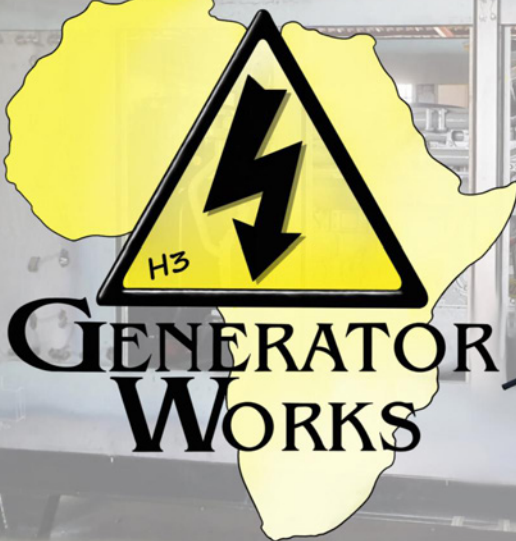
- \* STANDBY & PRIME GENERATORS
- \* PTO GENERATORS
- \* MOBILE GENERATORS
- \* SILENT GENERATORS

**MANUFACTURING:**

- \* SILENCE CANOPIES
- \* TANKS AND FRAMES
- \* TRAILERS (single & double axels)

**SERVICES:**

- \* REPAIRS
- \* INSTALLATIONS
- \* DELIVERIES



**GENERATOR WORKS**

CELL: +27 (0)83 717 6816

EMAIL: [ADMIN@GENERATORWORKS.CO.ZA](mailto:ADMIN@GENERATORWORKS.CO.ZA)

[WWW.GENERATORWORKS.CO.ZA](http://WWW.GENERATORWORKS.CO.ZA)

# DISTRIBUTION LIST

TOWN   CITY	SHOP	PROVINCE
ALBERTINIA	SSK AGRILAND	WESTERN CAPE
AMERSFOORT	AFGRI AGRI SERVICES	MPUMALANGA
BAINSVLEI	BAINSVLEI CO-OP	FREE STATE
BEAUFORT WEST	BKB	WESTERN CAPE
BELFAST	AFGRI AGRI SERVICES	MPUMALANGA
BERGVILLE	AFGRI AGRI SERVICES	KWAZULU-NATAL
BETHLEHEM	AFGRI AGRI SERVICES	FREE STATE
BLOEMFONTEIN	BKB	FREE STATE
BLOEMHOF	HINTERLAND	NORTH WEST
BOSHOF	HINTERLAND	NORTHERN CAPE
BRITS	AFGRI AGRI SERVICES	NORTH WEST
BRONKHORSTSPRUIT	AFGRI AGRI SERVICES	MPUMALANGA
BULTFONTEIN	HINTERLAND	FREE STATE
CAROLINA	TWK AGRI	MPUMALANGA
CERES	KAAP AGRI	WESTERN CAPE
CERES	KAAP AGRI	WESTERN CAPE
COLIGNY	NWK RETAIL	NORTH WEST
CRADOCK	AGRICO	EASTERN CAPE
DE AAR	BKB	EASTERN CAPE
DELMAS	AFGRI AGRI SERVICES	MPUMALANGA
DUNDEE	AFGRI AGRI SERVICES	KWAZULU-NATAL
ELLIOT	OVK	EASTERN CAPE
ERMELO	AFGRI AGRI SERVICES	MPUMALANGA
FORT BEAUFORT	THE CO-OP FORT BEAUFORT	EASTERN CAPE
GEORGE	SSK AGRILAND	WESTERN CAPE
GRAAFF-REINET	OVK	EASTERN CAPE
GRAAFWATER	KAAP AGRI	WESTERN CAPE
GREYTOWN	TWK LANDBOU BPK	KWAZULU-NATAL
HANKEY	HUMANSDORP CO-OP	NORTHERN CAPE
HARRISMITH	AFGRI AGRI SERVICES	FREE STATE
HARTSWATER	HINTERLAND	NORTHERN CAPE
HEIDELBERG	AFGRI AGRI SERVICES	GAUTENG
HEIDELBERG	SSK AGRILAND	WESTERN CAPE
HEILBRON	HINTERLAND	FREE STATE
HEROLD	SSK AGRILAND	WESTERN CAPE
HOEDSPRUIT	OBARO	MPUMALANGA
HOOPSTAD	HINTERLAND	FREE STATE
HUMANSDORP	HUMANSDORP CO-OP	EASTERN CAPE
JAN KEMPDORP	HINTERLAND	NORTHERN CAPE
JOHANNESBURG	AIRPORT PETS (HYPER STORE)	GAUTENG
KLERKSDORP	HINTERLAND	NORTH WEST
KLOOF	KBD HATCHERY	KWAZULU-NATAL
KNYSNA	SSK AGRILAND	WESTERN CAPE
KROONSTAD	HINTERLAND	FREE STATE
KURUMAN	AGRIMARK	NORTHERN CAPE
LADYSMITH	AFGRI AGRI SERVICES	KWAZULU-NATAL
LEEUDORINGSTAD	HINTERLAND	NORTH WEST
LICHTENBURG	BEARING MAN GROUP	NORTH WEST
LICHTENBURG	LICHTENBURG OMHEININGS	NORTH WEST
LOERIESFONTEIN	KAAP AGRI	NORTHERN CAPE
LOXTON	KAROO VLEIS KOOPERATIEF	NORTHERN CAPE
LUTZVILLE	KAAP AGRI	WESTERN CAPE
LYDENBURG	AFGRI AGRI SERVICES	MPUMALANGA
MAKHADO	KAAP AGRI	LIMPOPO
MALMESBURY	KAAP AGRI	WESTERN CAPE
MARBLE HALL	TWK KUNSMIS	LIMPOPO

TOWN   CITY	SHOP	PROVINCE
MEYERTON	HI PERFORMANCE FEEDS	VAAL
MIGDOL	HINTERLAND	NORTH WEST
MISGUND	SSK AGRILAND	EASTERN CAPE
MODIMOLLE	MODIMOLLE RETAIL - VKB	LIMPOPO
MOREESBURG	KAAP AGRI	WESTERN CAPE
MOSSEL BAY	SSK AGRILAND	WESTERN CAPE
NABOOMSPRUIT	OBARO	LIMPOPO
NELSPRUIT	AFGRI AGRI SERVICES	MPUMALANGA
NEWCASTLE	AFGRI AGRI SERVICES	KWAZULU-NATAL
NIGEL	AFGRI AGRI SERVICES	GAUTENG
ODENDAALSRU	HINTERLAND	FREE STATE
OUDTSHOORN	KLEIN KAROO CO-OPERATION	WESTERN CAPE
PAARL NORTH	KAAP AGRI	WESTERN CAPE
PARYS	HINTERLAND	FREE STATE
PETRUSBURG	HINTERLAND	FREE STATE
PHILIPPI	KAAP AGRI	WESTERN CAPE
PIET RETIEF	TWK MIDAS	MPUMALANGA
PIETERMARITZBURG	MASCOR	KWAZULU-NATAL
PIETERMARITZBURG	PALMER AGRICULTURAL SUPPLIES	KWAZULU-NATAL
PIETERMARITZBURG	TILL MASTER	KWAZULU-NATAL
PIETERMARITZBURG	TWK AGRI	KWAZULU-NATAL
PIKETBERG	AGRIMARK PIKETBERG	WESTERN CAPE
PIKETBERG	KAAP AGRI	WESTERN CAPE
PLETTENBERG BAY	SSK AGRILAND	WESTERN CAPE
POLOKWANE	VKB	LIMPOPO
PONGOLA	TWK AGRI	KWAZULU-NATAL
PORT ELIZABETH	HUMANSDORP CO-OP	EASTERN CAPE
PORTERVILLE	KAAP AGRI	WESTERN CAPE
POTCHEFSTROOM	HINTERLAND	NORTH WEST
POTGIETERSRU	OBARO	LIMPOPO
PRIESKA	GWK	NORTHERN CAPE
PRINCE ALBERT	KLEIN KAROO CO-OPERATION	WESTERN CAPE
QUEENSTOWN	BKB	EASTERN CAPE
RAWSONVILLE	KAAP AGRI	WESTERN CAPE
REITZ	VAN ZYL STAALWERKE	FREE STATE
REIVILO	HINTERLAND	NORTHERN CAPE
RIEBEEK-WES	KAAP AGRI	WESTERN CAPE
RUSTENBURG	OBARO	NORTH WEST
SENEKAL	AFGRI AGRI SERVICES	FREE STATE
SPRINGBOK	AGRIMARK	NORTHERN CAPE
STELLA	HINTERLAND	NORTH WEST
STILL BAY	SSK AGRILAND	WESTERN CAPE
SWELLENDAM	SSK AGRILAND	WESTERN CAPE
THEUNISSEN	HINTERLAND	FREE STATE
TOSCA	HINTERLAND	NORTHERN CAPE
TZANEEN	KAAP AGRI	LIMPOPO
TZANEEN	VKB	LIMPOPO
UNDERBERG	TWK AGRI	KWAZULU-NATAL
UNIONDALE	SSK AGRILAND	WESTERN CAPE
UPINGTON	AGRIMARK	NORTHERN CAPE
VENTERSDORP	HINTERLAND	NORTH WEST
VEREENIGING	HINTERLAND	VAAL
VOLKSRUST	BKB	MPUMALANGA
VREDE	BKB	FREE STATE
VRYHEID	AFGRI AGRI SERVICES	KWAZULU-NATAL
WELKOM	HINTERLAND	FREE STATE
WINTERTON	TWK AGRI	KWAZULU-NATAL
WOLMARANSSTAD	AFGRI AGRI SERVICES	NORTH WEST
WOLMARANSSTAD	HINTERLAND	NORTH WEST
WORCESTER	KAAP AGRI	WESTERN CAPE



# FERTASA

Fertilizer Association of Southern Africa

## FERTASA, CERTIFIED CREDIBILITY.

**WE STAND FOR THE PROTECTION OF  
THE SUSTAINABLE USE OF FERTILIZER.**

**FERTASA AND ITS MEMBERS ARE COMMITTED TO THE PROMOTION OF  
SUSTAINABLE SOIL FERTILITY AND ENHANCED PLANT NUTRITION.**

Fertasa strives to provide information on fertilizer and crop related topics. Apart from assistance with fertilizer applications, queries relating to fertilizer usage, plant nutrition and soil fertility usage, plant nutrition and soil fertility are referred to our Technical Advisers or Subject Matter Specialists for their expert opinions and advice.

Member companies and others are encouraged to share their experiences in proven techniques and novel approaches in ensuring social, environmental and economic sustainability for all.

[www.fertasa.co.za](http://www.fertasa.co.za)

FERTASA  
Fertilizer Association of Southern Africa  
Tel: +27 (0) 12 349 1450 | Fax : +27 (0) 12 349 1463  
Email: [general@fertasa.co.za](mailto:general@fertasa.co.za)

SCAN ME



## WHO ARE WE?

- A code of conduct.
- A set of standards audited by an independent compliance management body.
- Quality products.
- Relevant scientifically-based recommendations.
- Continual learning and improvement.
- Complying with all legal requirements.

### Structure of Fertasa

Fertasa is managed and directed by a Board of Directors who are elected by and representative of the ordinary members. The Board of Directors report to the Management Committee which comprises representatives from all ordinary and affiliate members. The Management Committee appoints operational committees to attend to various aspects of the business of Fertasa.

### Purpose

Fertasa is a recognised and preferred body aimed at promoting the image of the fertilizer industry through:

- Promoting the integrity of each member and building preferential trust for their products and services.
- Enhancing and protecting the interest of its members through effective engagement with government and organised agriculture.

### Mission

To provide a credible platform to promote the responsible and sustainable use of fertilizers.

### Vision

To be recognised as the representative voice for the fertilizer industry and as the stamp of approval for responsible and sustainable soil fertility and plant nutrition in Southern Africa.

### Board of Directors

The Board of directors manages and directs the business and affairs of Fertasa. The Board comprises six (6) directors, and one (1) executive director (the Chief Executive Officer of Fertasa).

The directors are elected by the ordinary members with equal representation from both smaller and larger member companies.

### Core Functions

- Actively promote the agro-economic and environmentally accountable fertilizer and aglime practices;
- Develop a positive public awareness and acceptance of the need for fertilizer and aglime use in food production;
- Improve the operating environment within which its constituent industries operate in a spirit of free enterprise and fair trade;
- Assimilate, adds value to and disseminates fertilizer and aglime related information;
- Provide a discussion forum for its members and other parties on all aspects relating to fertilizer and aglime distribution, agronomic advice and product quality.



Reg. Nr. 1971/000012/08  
VAT Reg. Nr. 4830104164

# Piket Implemente

tel: +27(0)22 913 2435  
e-pos: info@piket.co.za  
web: www.piket.co.za

Geenbewerking



## NO TILL DEKGEWAS FYNSAAD PLANTER

- Modelle: 6-Ry / 8-Ry / 10-Ry / 12-Ry / 14-Ry / 16-Ry / 20-Ry
- 3-Kompartement saad, fynsaad & kunsmis kis
- Plant van dekgewas in wingerde & vrugteboorde of weiding op suiwel & vee plase
- Geen bewerking ("No Till"): plant in gevestigde weiding of konvensioneel



6-RY / 8-RY / 10-RY:  
PLANT VAN DEKGEWAS IN  
WINGERDE & VRUGTEBOORDE



12-RY / 14-RY / 16-RY /  
20-RY: PLANT VAN WEIDING  
OP VEE & SUIWEL PLASE



AKKURATE  
SAAD PLASING

## HIDROLIESE NO TILL DRILL

- Modelle: 16-Ry / 20-Ry / 24-Ry (7" ry spasiëring) en 10-Ry / 12-Ry / 20-Ry (10" ry spasiëring)
- 3-Kompartement saad, fynsaad & kunsmis kis
- Bestaan uit dubbel-sny skottels & enkel-sny skottels
- Geen bewerking ("No Till"): plant in gevestigde weiding of konvensioneel



ELKE RY HET  
ONAFHANKLIKE  
DIEPTE BEHEER



LAE KOMPASIE  
WIELE



AKKURATE  
SAAD PLASING



UITSTEKENDE  
ONTKIEMING



Ontkieming Resultate

Kontak ons vir meer inligting by tel: +27(0)22 913 2435 of  
stuur 'n e-pos aan: info@piket.co.za of besoek: www.piket.co.za