

# AGRI FOODSA

MAG

FREE SUPPLIERS GUIDE

JAN | FEB 2018  
Vol 2 • No 5



20  
years  
AFRICA

- \* MATERIAL HANDLING
- \* STRUCTURES
- \* STORAGE
- \* CONDITIONING

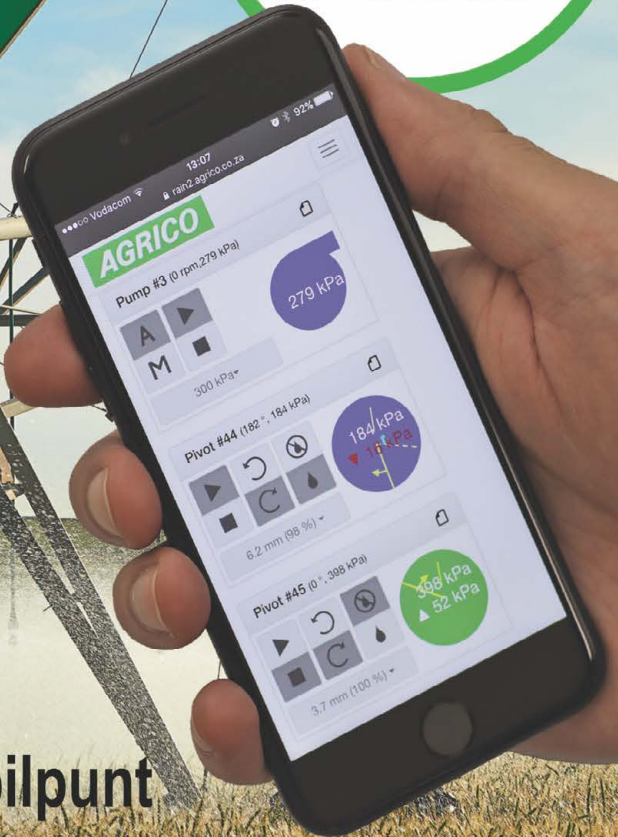


[www.gsiafrica.co.za](http://www.gsiafrica.co.za)

# AGRICO

Advanced paneel  
**GRATIS!**  
met  
internetbeheer.\*

# AGRICO



Bestel 'n nuwe Agrico spilpunt met 'n *Premium* paneel en kry 'n opgradering.

\*Gratis subskripsie ingesluit vir die eerste 24 maande.



Kontak besonderhede: Alfred Andrag | c: 082 824 1214  
t: 021 950 4111 | f: 021 950 4208 | alfred.andrag@agrico.co.za

## Meer as 100 jaar diens

Verkope en diens met takke regoor Suidelike Afrika:

Aliwal-Noord | Bellville | Bethlehem | Bloemfontein | Caledon | Ceres | Christiana | Cradock | Estcourt | George | Hartswater | Humansdorp | Kakamas | Kimberley | Kroonstad  
Lichtenburg | Lusaka | Nelspruit | Nigel | Nylstroom | Pietermaritzburg | Piketberg | Rawsonville | Tzaneen | Upington | Vredendal | Wellington



A very Happy New Year to all of our AGRIFOODSA Magazine readers and advertisers! I trust that your holidays were well spent with family & friends, taking some time to recuperate and prepare for 2018.

As people do each January, we all think about resolutions, fresh starts, things in which we'd like to improve, etc. Often resolutions revolve around our health, and those are good ones to make and keep! But if you are like me, by February most have been forgotten, so my resolution is to simply enjoy the year ahead.

Contentment. Happiness. Joy. What do those words conjure up in your mind? I think for most, it's getting or even giving an exciting something that you didn't have to pay a cent for. If that sounds like you, head over to our Competitions page on the AFSA Website (<http://www.agrifoodsa.info/competitions>) to win some "lekker" prizes every other month (see pages 50-51 for more details). Our AFSA Facebook page (<https://www.facebook.com/agrifoodsa>) also offers weekly competitions plus funnies, advertiser showcases, recipes, Boerate, interesting articles and so much more.

In an effort to ensure that you have tons of time to do what makes you truly joyful, we're proud to present you with the very best in local products and service providers in the Southern African agricultural and food related industries. With 63 advertisers in this publication and thousands of advertisers on the AGRIFOODSA.INFO website (<http://www.agrifoodsa.info>), we're sure that you'll be in touch with the right people for all of your requirements in no time at all.

We are very pleased to have welcomed two new and very cheerful sales consultants, Renier van der Merwe and Sonja Botha, to our team. We trust that they'll have fantastic success with us.

Abraham Lincoln once said: "Folks are usually about as happy as they make their minds up to be", so I do hope that you'll choose to and work towards having a beautiful new year.

Keeping the sunny side up.

*Chantell Schmahl*

EDITOR IN CHIEF  
@chantellschmahl

## EDITORIAL COMMITTEE

Editor in chief : Chantell Schmahl  
Managing director : Mabel Schmahl  
Production manager : Leon Schmahl  
Chief graphic designer : Ronel Schmahl

## ACCOUNTS & SUBSCRIPTIONS

Ida van Zweel : +27 (0) 12 997 3407  
: accounts@agrifoodsa.info  
Riana Greyling : +27 (0) 12 997 3412  
Personal assistant (CEO)

## ADVERTISING & RATES

Mabel Schmahl  
Regional Sales Consultant  
Eastern, Western Cape & KwaZulu Natal  
+27 (0) 82 563 4427  
mabel@agrifoodsa.info

Sonja Botha  
Regional Sales Consultant  
Gauteng, Limpopo & Mpumalanga  
+27 (0) 12 997 3412  
sonja@agrifoodsa.info

Renier van der Merwe  
Regional Sales Consultant  
Free State, Northern Cape & North West  
+27 (0) 64 707 7798  
renier@agrifoodsa.info

## PUBLISHING & DISTRIBUTION

MES Consultants South Africa

Format	: B5, full-colour, glossy magazine
Frequency	: Bi-monthly
Language	: Bilingual
LSM	: 6-10
Print run	: 20 000 minimum
Readership	: 180 000
Distribution	: Nationally available at agricultural outlets (see pages 80-81 for distributors)
Read online	: <a href="http://www.agrifoodsa.info/magazine">www.agrifoodsa.info/magazine</a>

# CONTENTS

## FEATURES | HOOFTREKKE

AGRIFOODSA.INFO Feature	Pages 30-31
AGRIFOODSA.INFO Competition	Pages 50-51
AGRIFOODSA.INFO For the Advertiser	Pages 62-63
AGRIFOODSA.INFO Distribution	Pages 64-65

## ACCESSORIES | BYBEHORE

Atlasware	Page 40
-----------	---------

## AGRICULTURAL SUPPLIERS ORGANISATION | LANDBOUVERSKAFFINGSORGANISASIE

Suidwes Landbou	Pages 66-67
-----------------	-------------

## ANIMAL FEED | VEEVOER

Quadro Alloys Trading	Page 39
-----------------------	---------

## ANIMAL HEALTH | DIEREGESONDHEID

Afrivet	Page 20
ANB Vet	Page 19

## BOOTS | STEWELS

Neptun Boot	Page 44
-------------	---------

## CHEMICALS | CHEMIKALIË

DOW Agro Science	Pages 24-25
------------------	-------------

## CONSTRUCTION | KONSTRUKSIE

ELB Equipment	Page 45
Hart-Top Trading cc	Page 57
Stumbelbloc Exports (Pty) Ltd	Page 37

## COVER CROPS | DEKGEWASSE

Joined Specialised Farming (Pty) Ltd	Page 19
--------------------------------------	---------

## CROP PROTECTION | GEWASBESKERMING

Degesch SA (Pty) Ltd - (Phostoxin)	Page 10
------------------------------------	---------

## DAY OLD CHICK SUPPLIERS | DAGOUDKUIKENVERSKAFFERS

Hy-Line South Africa (Pty) Ltd	Page 12
--------------------------------	---------

## DEMOLITION | SLOPING

ELB Equipment	Page 45
---------------	---------

## DIESEL CARS | DIESELMOTORS

PM Smit Konstruksie	Page 61
---------------------	---------

## DIESEL ENGINES & GENERATORS | DIESELENJINS & KRAGOPWEKKERS

Kirloskar Engines SA (Pty) Ltd	Page 53
--------------------------------	---------

## ELECTRIC MOTORS & DRIVES | ELEKTRIESE MOTORS & AANDRYWERS

Zest Weg Group	Page 26
----------------	---------

## FENCING | OMHEININGS

Brits Pale	Page 21
F.A.R. Timbers	Page 39

## FERTILIZER, LIME & GYPSUM | KUNSMIS, KALK & GIPS

Geyser`s Fertilizer & Lime cc	Page 43
-------------------------------	---------

## GENERATORS | KRAGOPWEKKERS

Kirloskar Engines SA (Pty) Ltd	Page 53
--------------------------------	---------

## GRAIN HANDLING | GRAANHANTERING

SBS Agri	Page 46
----------	---------

## GRAIN STORAGE | GRAANBERGING

GSI	Cover & Pg 11
Noordwes Damme	Page 28
SBS Agri	Page 46

## HYDRAULIC SPARES | HIDROLIESE ONDERDELE

Wes-Transvaal Spuitparte (Pty) Ltd	Page 33
------------------------------------	---------

## IMPLEMENTS | IMPLEMENTE

Quadmaster	Page 58
SSK Steelworks (Agri Shalom)	Page 47

## INSOLATION | INSOLASIE

Technopol (SA) (Pty) Ltd	Page 42
--------------------------	---------

## IRRIGATION | BESPROEÏING

Agrico	Page 02
Agriplas (Pty) Ltd	Page 29
AQS Liquid Transfer - (Vega Pumps)	Page 36
KSB Pumps & Valves	Page 43
Netafim SA (Pty) Ltd	Page 23

## LIVESTOCK EQUIPMENT | LEWENDE HAWE TOERUSTING

Plasson SA (Pty) Ltd Page 45

## LIVESTOCK HOUSING | LEWENDE HAWE BEHUISING

Technopol (SA) (Pty) Ltd Page 42

## MATERIAL FLOW | MATERIAALVLOEI

Oli SA (Pty) Ltd Page 49

## MILLING EQUIPMENT | MAALTOERUSTING

Delaval Page 37

## PACKAGING | VERPAKKING

Packo RSA Page 47

## PASTURE | WEIDING

Brasuda Pages 14-17

## POULTRY | PLUIMVEE

Cobb South Africa Page 41

Reliance Poultry Equipment Page 29

## POWER PRODUCTS | KRAGGEREEDSKAP

Hoffmann Power Products Page 08

## PULLETS SUPPLIERS | PLUIMVEEPRODUKVERSKAFFERS

Hy-Line South Africa (Pty) Ltd Page 12

## RABBIT FARMING | HAASBOERDERY

Coniglio Rabbit Meat Farm (Pty) Ltd Page 27

## SAWMILLING | SAAGMEULBEDRYF

Wood Miser Africa (Pty) Ltd Page 18

## SECURITY | SEKURITEIT

Ballistic Body Armour Page 09

## SHADING | SKADUNETTE

Plusnet Page 48

## SILAGE | KUILVOER

Biomin Page 13

Leading Edge 209 cc Page 22

## SILOS | SILO'S

Plasson SA (Pty) Ltd Page 45

SBS Agri Page 46

## SOLAR | SONKRAG

Van Heerden Solar Page 19

## SPRAYERS | SPROEIERS

Sprayrite cc Page 52

## SPRAYING PARTS | BESPROEÏNGSONDERDELE

Wes-Transvaal Spuitparte (Pty) Ltd Page 33

## TANKS & RESERVOIRS | WATERTENKS & OPGAARDAMME

Noordwes Damme Page 28

## TOOLS | GEREEDSKAP

Gedore Page 33

## TRAILER COMPONENTS | SLEEPWAONDERDELE

Burquip International (Pty) Ltd Page 56



# CONTENTS

## TRAILERS & TRUCK BODIES | SLEEPWAENS EN VRAGMOTORBAKKE

SSK Steelworks (Agri Shalom) Page 47

## TYRES | BANDE

JBH Wheels cc Page 61

Michelin Tyre Company Page 32

Tire City Africa (Pty) Ltd Page 47

## WATER STORAGE | WATERBERGING

Noordwes Damme Page 28

## WORK WEAR | WERKSDRAG

Neptun Boot Page 44

## MECHANISATION | MEGANISASIE

### TRACTORS | TRUCKS | TRAILERS | IMPLEMENTS | SPARES

### TREKKERS | TROKKE | SLEEPWAENS | IMPLEMENTE | ONDERDELE

Anderbolt Truck Rebuild Centre cc Page 61

Boss Propshaft & CV Joint Centre Page 59

Burquip International (Pty) Ltd Page 56

Crop Angel (Pty) Ltd Page 38

Custom Plant Solutions (Pty) Ltd Pages 54-55

ELB Equipment Page 45

Feeler Africa Pages 34-35

Hart-Top Trading cc Page 57

Henkru Vervaardiging Page 57

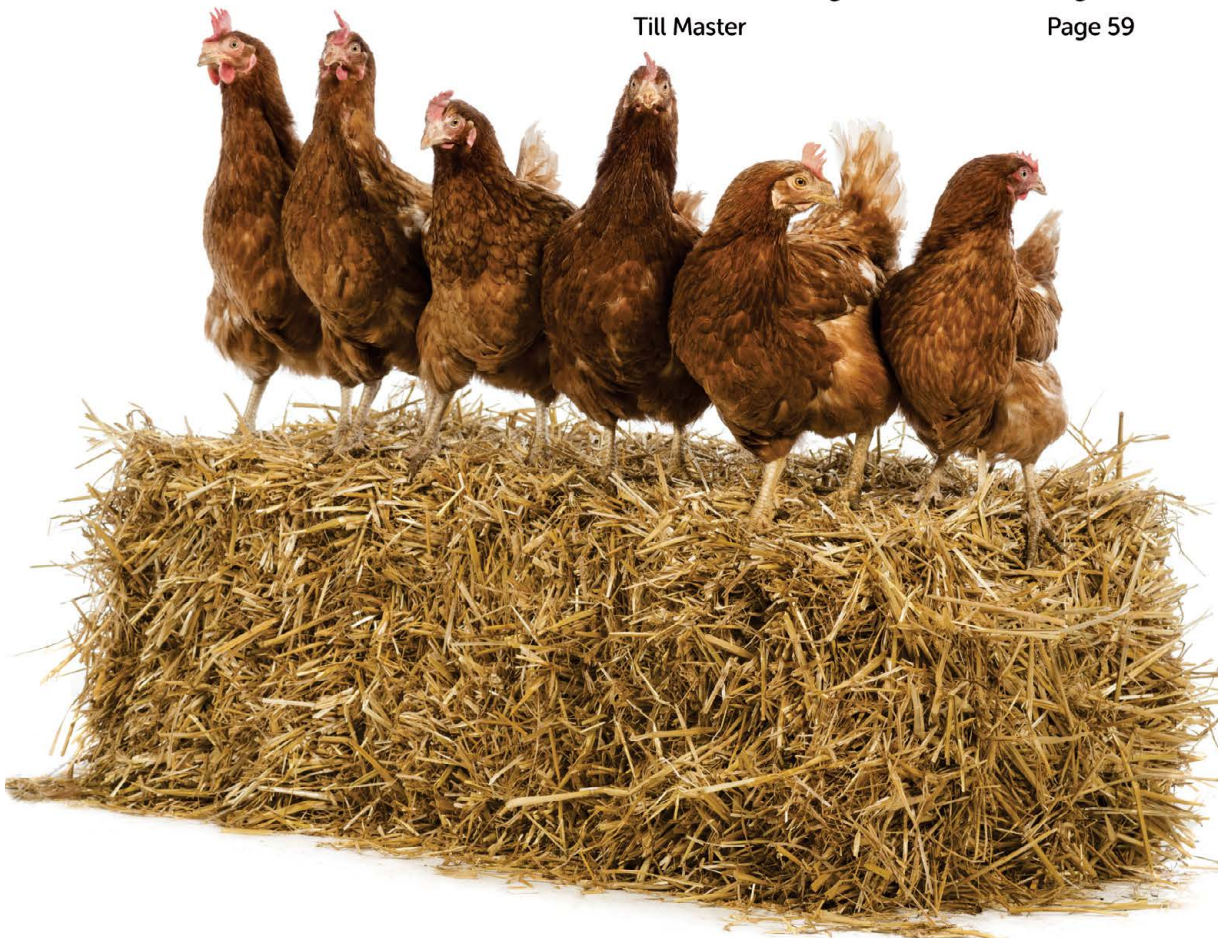
JBH Wheels cc Page 61

N1 4X4 Page 60

Piket Implements Page 68

SSK Steelworks (Agri Shalom) Page 47

Till Master Page 59



AFRIVET	PAGE 20	KIRLOSKAR ENGINES SA	PAGE 53
AGRICO	PAGE 02	KSB PUMPS AND VALVES	PAGE 43
AGRIPLAS (PTY) LTD	PAGE 29		
ANB VET	PAGE 19	LEADING EDGE 209 CC	PAGE 22
ANDERBOLT TRUCK REBUILD	PAGE 61		
AQS LIQUID TRANSFER	PAGE 36	MICHELIN TYRE COMPANY	PAGE 32
ATLASWARE	PAGE 40		
		N1 4X4	PAGE 60
BALLISTIC BODY ARMOUR	PAGE 09	NEPTUN BOOT	PAGE 44
BIOMIN	PAGE 13	NETAFIM SA (PTY) LTD	PAGE 23
BOSS PROPSHAFT & CV JOINTE	PAGE 59	NOORDWES DAMME	PAGE 28
BRASUDA	PAGES 14-17		
BRITS PALE	PAGE 21	OLI SA (PTY) LTD	PAGE 49
BURQUIP INTERNATIONAL	PAGE 56		
		PACKO RSA	PAGE 47
COBB SOUTH AFRICA	PAGE 41	PIKET IMPLEMENTS	PAGE 68
CONIGLIO RABBIT MEAT FARM	PAGE 27	PLASSON SA (PTY) LTD	PAGE 45
CROP ANGEL (PTY) LTD	PAGE 38	PLUSNET	PAGE 48
CUSTOM PLANT SOLUTIONS	PAGES 54-55	PM SMIT KONSTRUKSIE	PAGE 61
DEGESCH SA (PTY) LTD	PAGE 10	QUADMASTER	PAGE 58
DELAVAL	PAGE 37	QUADRO ALLOYS TRADING	PAGE 39
DOW AGRO SCIENCE	PAGES 24-25		
		RELIANCE POULTRY EQUIPMENT	PAGE 29
ELB EQUIPMENT	PAGE 45		
		SBS AGRI	PAGE 46
F.A.R. TIMBERS	PAGE 39	SPRAYRITE CC	PAGE 52
FEELER AFRICA	PAGES 34-35	SSK STEELWORKS (AGRI SHALOM)	PAGE 47
		STUMBELBLOC EXPORTS (PTY) LTD	PAGE 37
GEDORE	PAGE 33	SUIDWES LANDBOU	PAGES 66-67
GEYSER`S FERTILIZER & LIME CC	PAGE 43		
GSI	COVER	TECHNOPOL (SA) (PTY) LTD	PAGE 42
GSI	PAGE 11	TILL MASTER	PAGE 59
		TIRE CITY AFRICA (PTY) LTD	PAGE 47
HART-TOP TRADING CC	PAGE 57		
HENKRU VERVAARDIGING	PAGE 57	VAN HEERDEN SOLAR	PAGE 19
HOFFMANN POWER PRODUCTS	PAGE 08		
HY-LINE SOUTH AFRICA (PTY) LTD	PAGE 12	WES-TRANSVAAL SPUITPARTE	PAGE 33
		WOOD MIZER AFRICA (PTY) LTD	PAGE 18
JBH WHEELS CC	PAGE 61		
JOINED SPECIALISED FARMING	PAGE 19	ZEST WEG GROUP	PAGE 26

# HOFFMANN POWER

FULL SPARE PARTS  
BACK-UP

MADE TOUGH FOR AFRICA™

FOR COMPLETE LIST OF HIGH PRESSURE WASHERS  
CONTACT YOUR NEAREST  
**HOFFMANN DEALER**



**HPE-1000**

ELECTRIC DRIVEN  
SINGLE PHASE, 90 BAR  
PORTABLE LIGHTWEIGHT  
SELF SUCTION OPTION  
(Complete with gun and hose)



**TRP 2700**

ENGINE DRIVEN, 186 BAR  
HX6.5 PETROL  
RECOIL START  
(Complete with lance, gun,  
nozzles and hose)



**HPE-2200C**

ELECTRIC DRIVEN  
SINGLE PHASE, 150 BAR  
ON TROLLEY  
THREE-PHASE MODEL ALSO AVAILABLE  
(Complete with lance, gun, nozzles and hose)



**3WZ-3200A**

ENGINE DRIVEN, 248 BAR  
HY14 PETROL OR HDH8 DIESEL  
RECOIL/ELECTRIC START  
(Complete with lance, gun, nozzles and hose)

[www.hoffmannpower.co.za](http://www.hoffmannpower.co.za)

**011 334 6573**

[sales@hoffmannpower.co.za](mailto:sales@hoffmannpower.co.za)



# QUALITY PROTECTION FOR OUR FARMERS



- 30 year's experience
- Commitment to quality
- Rigorous testing
- Non-stop innovation
- Purpose built products
- Excellent customer service
- Competitive pricing

# GEHALTE BESKERMING VIR ONS BOERE



- 30 Jaar se ervaring
- Toewyding tot kwaliteit
- Streng toetsstandaarde
- Voortdurende ontwikkeling
- Doelgerigte produkte
- Uitstekende kliëntediens
- Mededingende pryse



ADVANCED SURVIVAL TECHNOLOGY

**BALLISTIC BODY ARMOUR (PTY) LTD**

ENQUIRIES : +27 (0) 11 873 9563

: +27 (0) 82 491 0685

EMAIL : [INFO@BODYARMOUR.CO.ZA](mailto:INFO@BODYARMOUR.CO.ZA)

WEBSITE : [WWW.BODYARMOUR.CO.ZA](http://WWW.BODYARMOUR.CO.ZA)

# Detia®

## DEGESCH



# BESKERM JOU WAARDEVOLLE GRAAN MET Phostoxin

- Beskerm u gebergde graan teen graan insekte
- Raak ontslae van rotte, molle en veldmuise
- Gebruik Phostoxin vir beroking en springhaasrotte
- Degesch is die vervaardigers van Phostoxin
- 90g en 1kg verpakkings beskikbaar
- Graanbeskerming teen insekte (Kalande)
- Sputmiddels en rotgif



**AS DIT NIE SÊ Phostoxin NIE ... IS DIT NIE Phostoxin NIE!**



HOOFKANTOOR - Tel: +27 (0) 11 974 2338 | Faks: +27 (0) 11 974 1987 | Tegniese navrae: Eddie +27 (0) 82 450 9199  
E-Pos: eddie.degesch@gmail.com | Adres: Powerstraat 10, Isando

### RAADGEWENDE AGENTE

**Ryno Botha**  
+27 (0) 82 493 3958  
Mpumalanga  
Vrystaat  
Natal  
Limpopo

**Natie Kroukam**  
+27 (0) 83 463 0244  
Noordwes  
Gauteng  
Noord Vrystaat  
Noord-Kaap

**Henchem**  
+27 (0) 82 493 7564  
Oos-Kaap  
Wes-Kaap

**Neal Gurschler**  
+27 (0) 72 587 3583  
Sub-Sahara Afrika



# THE PROFIT CENTER

## CONDITIONING:

Take advantage of early harvest premiums, reduce yield loss and save money by drying your own grain.

## MATERIAL HANDLING:

Speed through unload and get back into the field with a gentle and efficient GSI bucket elevator.



Farming is never easy. It's even tougher when the market's more bust than boom. Skip the line at the elevator and plan for profit with a complete grain system from GSI.

## STORAGE:

Increase marketing flexibility and capture your best price when the time is right.

**VISIT [GSIAFRICA.CO.ZA](http://GSIAFRICA.CO.ZA)**

**STORAGE  
+ CONDITIONING  
+ MATERIAL HANDLING  
+ STRUCTURES**

**TURN YOUR OPERATION INTO  
PROFIT CENTER**



124 Ridge Road, Laser Park,  
Honeydew, Ext 15, Gauteng  
P O Box 4012, Honeydew, 2040,  
South Africa  
Phone: +27 (011) 794 4455  
Fax: +27 (011) 794 4515  
Email: [sales@gsiafrica.co.za](mailto:sales@gsiafrica.co.za)  
Website: [www.gsiafrica.co.za](http://www.gsiafrica.co.za)

## POULTRY EQUIPMENT DESIGNED TO MAXIMISE YOUR PROFIT



Cumberland provides complete feeding, drinking and ventilation systems for the maximum return on your investment

**SYSTEMS THAT  
ENSURES PERFORMANCE**



124 Ridge Road, Laser Park, Honeydew, Ext 15, Gauteng  
P O Box 4012, Honeydew, 2040, South Africa  
Phone: +27 (011) 794 4455, Ext 214 I Fax: +27 (011) 794 4515  
Email: [sales@gsiafrica.co.za](mailto:sales@gsiafrica.co.za) I Website: [www.gsiafrica.co.za](http://www.gsiafrica.co.za)



**Hy-Line**



# THE BEST FIT FOR YOUR PROFIT

## HY-LINE SILVER BROWN

## HY-LINE BROWN

Age 50% production (days)	138	140
Feed consumption (g/bird/day)	108 -112 (18 - 80 weeks)	105 - 112 (18 - 90 weeks)
Average egg weight (g)	63 (at 80 weeks)	63,7 - 66,3 (at 90 weeks)
Feed conversion	2,06 (at 80 weeks)	1,95 - 2,07 (at 90 weeks)
Eggs   hen housed	372 (at 80 weeks)	420 (at 90 weeks)

**HY-LINE SOUTH AFRICA +27 (0)11 318 2355**

**Nico Conroy** - Director - Marketing: +27 (0) 71 485 7098

**Folkers Joubert** - Technical Advisor : +27 (0) 76 812 7589

MES CONSULTANTS - 082 663 4427

[www.hyline.com](http://www.hyline.com)



# Biomin® P.E.P.

## Sustainable faster growth!

March 16th

March 2nd



Add the power of a unique blend of essential oils and functional carriers to your diet.

- Better appetite
- Improved performance
- Reduced environmental emissions

**BIOMIN Animal Nutrition (Pty) Ltd**

2571 Klerksdorp, South Africa

Tel.: +27 18 468 1455 / +27 18 468 1456

office.za@biomin.net

[pep.biomin.net](http://pep.biomin.net)

Naturally ahead

**Biomin®**



# WORLD WIDE LEADERS IN



#### ELEPHANT GRASS CARAJAS

- Carajas is an improved Banagras that can be established with seeds
- Selected for high dry matter production
- Quicker regrowth with higher protein
- This elephant grass has a good cold and drought tolerance
- Tasteful and digests well and used for grazing and silage making



#### PANICUM MAXIMUM - ARIES

- It is a perennial forage grass with tussocks
- Great tillering capacity
- Narrow hairless leaves and light green color
- The main characteristic of this cultivar remains on its regrowth capacity after grazing
- It is very well accepted by beef cattle, horses, sheep and goats.
- High protein with a 70% digestibility and highly palatable

PANICUM  
MAXIMUM-  
MOMBASA & TANZANIA

#### PANICUM MAXIMUM - MOMBASA AND TANZANIA

- High dry matter producer with excellent digestibility
- Recommended for intense grazing pastures
- Direct grazing, hay making and silage making
- Used by beef and dairy cattle producers



#### PANICUM MAXIMUM - PAREDAO

- New improved panicum variety that produces higher quality plants that produce up to 30% more than most panicum varieties
- plant have an excellent palatability with a high drought tolerance
- direct grazing and silage making
- Is recommended for milk and beef production



# TROPICAL PASTURE SEED

## BRACHIARIA BRIZANTHA- MG 4

### BRACHIARIA BRIZANTHA - MG 4

- Improved Marandu that can handle poor soil with a high drought tolerance
- Utilize direct grazing and hay making
- Good regrowth after grazing
- Cold of tolerance higher than Marandu

Brachiaria Brizantha MG-5  
MATSUDA GENETICS 5

**Victoria**

### BRACHIARIA BRIZANTHA - MG 5 VICTORIA

- Yields higher than Marandu cultivar
- Good drought resistance
- Tolerates poorly drained soils
- Good regrowth after grazing
- Very good option for the beef cattle production

## 4 GAME MIX

### 4 GAME MIX

- Improved handling through increased flow capacity of the seed
- Better protection against insects
- Better protection against seedling rot
- Extremely suitable for grass-eating wildlife

HYBRID LEGUME  
**JAVA**

### HYBRID LEGUME JAVA

- Java is a perennial twinning and creeping legume with stems
- Low demand in soil fertility
- Fixate up to 150 kg/ha Nitrogen per year
- Medium palatability which assures high persistence with high crude protein value
- Presents high persistence under grazing
- Very good seed producer setting seeds all year round



**PROFIT**  
COMES RIGHT AFTER  
THE USE OF THIS EQUIPMENT



## SHOW FORAGE SEEDER:

QUALITY,  
TECHNOLOGY AND  
VERSATILITY



### AFRICAN DISTRIBUTORS

Lodewyk Koch: +27 (0) 84 800 8835

Office: +27 (0) 10 591 2226

[www.brasuda.co.za](http://www.brasuda.co.za)



Equipamento

# SiloFácil

Easy Silage



YEAR-ROUND QUALITY FOOD FOR THE ANIMALS

**AFRICAN DISTRIBUTORS**

Lodewyk Koch : +27 (0) 84 800 8835  
Office : +27 (0) 10 591 2226  
[www.brasuda.co.za](http://www.brasuda.co.za)



**Wood-Mizer**



# YOUR SAWMILLING SUCCESS ON THE FARM STARTS WITH WOOD-MIZER



*Pallets*



*Farm Manufacturing*



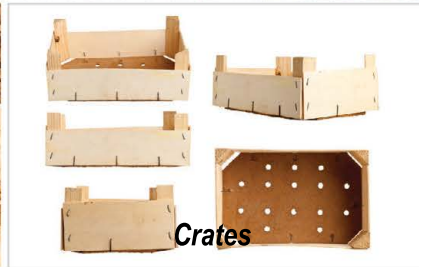
*Fencing Material*



*Building Material*



*Timber Sales*



*Crates*

**DISCOVER HOW OWNING A WOOD-MIZER CAN MAKE  
YOU FARM MORE PROFITABLY.**

**Wood-Mizer Africa (Pty) Ltd**  
1 Leader Park, 20 Chariot St, Stormill Ext 5, Johannesburg  
Tel: +27 11 473 1313 | [enquiries@woodmizer africa.com](mailto:enquiries@woodmizer africa.com)  
[www.woodmizer africa.com](http://www.woodmizer africa.com)





# VAN HEERDEN SOLAR POWER



GRATIS KWOTASIES VIR OMSKAKELING VAN ESKOMKRAAG

### SOMER WINSKOPIES:

Kleiner sonkragpompstelsel met 2 x 100 Watt panele.  
Volledig vir 40m installasie - R 22 500.00 (BTW Ing)

### SONKRAAGPANELE:

80 Watt Polycrystalline panele - R 1 150.00 (BTW Ing)  
100 Watt Polycrystalline panele - R 1 500.00 (BTW Ing)  
260 Watt Polycrystalline panele - R 3 450.00 (BTW Ing)

### WINDLAAIERS:

AN 400 Watt Land - 12Volt - R 9 500.00 (BTW Ing)  
AN 600 Watt Land - 24Volt - R13 500.00 (BTW Ing)

### LUDWIG VAN HEERDEN

+27 (0) 23 614 2983 | +27 (0) 82 574 0005 | Epos: lvhsolar@gmail.com

MES CONSULTANTS - 082 963 4427



Joined  
Specialised Farming

## Aalwurm / Nematode Problems?

Farming for the Future  
**Bladrammenas**  
Plant your Eelworm problems away!

Carl 082 450 6154 carl.bischoff@yahoo.co.za  
Björn 079 494 4215 bjornjsf@gmail.com  
Francois 082 445 1741 Pikkie 079 487 2423  
Office + 27 (0)11 913 1377  
www.bladrammenas.co.za  
Find us on Facebook



ANB + VET

No.7 Vervoerstraat, Kya Sands, Randburg, 2169  
Tel: +27 (0) 11 704 0120 | Faks: +27 (0) 11 704 0148  
Web: www.anbvets.co.za

## ANB Vet Groothandelaar van dieremedisyne en instrumente

Lewer oor hele Suid-Afrika  
Groot produk reeks

Spesiale aanbod - Kopp 20 kry een gratis op alles produkte  
\*Slegs waar geen korting reeds van toepasing is nie

Kontak ons vir  
vinnige lewering

### Bravecto



### Dectomax



### Drastic Deadline



### Ivomec Super



### Arnica Ice



### Berenil



### F10 SC



### Invermex



### Terramycin Spuut



### Rumix



### Terramycin Powder



### Terramycin



### Triatix 125



Halter

**GAME-MIN**  
FOR HOOF AND HORN Reg. No. V24773 (Act 36/1947)

**GAME-MIN**  
CAPTURE & BOMA Reg. No. V26351 (Act 36/1947)

# Take the bull by the horns

VITAMIN AND MINERAL  
SUPPLEMENT FOR GAME



**Organic complex trace minerals**



**Contains essential vitamins including Biotin with added magnesium and amino acids**



**Multiple applications**

- feed top up
- mix into drinking water
- oral dose



**Palatable**



**For game and ruminants**



Manufacturer & Registration Holder: Camelus Grondstowwe cc, PO Box 468, Oudtshoorn, 6620  
Distributed by: Afrivet Business Management (Pty) Ltd, Co. Reg. No. 2000/011263/07 PO Box 2009, Faerie Glen, 0043, Tel: +27 (0)12 817 9060, Web: www.afrivet.co.za Helpline: 0860 VEEARTS / 0860 833 2787  
GAME-MIN FOR BROWSE Reg. No. V26352 (Act 36/1947) GAME-MIN FOR HOOF AND HORN Reg. No. V24773 (Act 36/1947) GAME-MIN CAPTURE AND BOMA Reg. No. V26351 (Act 36/1947)



International  
Organization for  
Standardization



[www.britspoles.com](http://www.britspoles.com)

## VERSKAFFERS VAN CCA EN KREOSOOT BEHANDELDE PALE, LATTE & SPARRE WAT GEBRUIK KAN WORD VIR:

- Hael en skudunette
- Wingerde
- Krane en kampe
- Wilds- en beesheinings
- Wildsbomas
- Grasdakke
- Krag- en kommunikasie lyne



**Met 20 000 ton se voorraad kan ons enige bestelling groot of klein, vinnig en effektief lewer**

Meld die nommer en kwalifiseer vir 'n addisionele 5% afslag. Landbou 123

**ONS LEWER AF WÊRELDWYD. AFSLAG OP VOLUME BESKIKBAAR.  
KOOP DIREK VANAF DIE VERVAARDIGER MET MEER AS 22 JAAR SE ONDERVINDING**

Kontak Werner gerus by:

Tel: +27 (0) 12 258 9910 | +27 (0) 83 377 6464

Epos: Werner - [werner@britspale.co.za](mailto:werner@britspale.co.za)

# HEALTHY COWS ARE PROFITABLE COWS

Innovative welfare solutions for cows



- ✓ Flexible cubicles - no pressure marks
- ✓ Healthier animals
- ✓ The lying time is improved
- ✓ The animal is lying more correctly
- ✓ Flexibility minimizes damages to the animal
- ✓ The lifetime and the yield improves dramatically
- ✓ Better oestrus conditions (healthy cows = better oestrus)
- ✓ Less consumption of bedding
- ✓ The cleaning time of the cubicles will be minimized
- ✓ The health of the udder will be improved (cleaner udder = better udder health)
- ✓ Adjustable for all breeds and sizes
- ✓ Easy and cheap installation
- ✓ Lower cost per animal per year

- ✓ Promotes appetite
- ✓ The animal consumes more feed
- ✓ The animal is able to consume more feed further out on the feeding table
- ✓ Calmer animals during food consuming
- ✓ Differentiated feeding places
- ✓ Adjustable width
- ✓ Animal welfare, healthier animals
- ✓ No marks and damages from equipment
- ✓ Higher earnings



**Cow-Welfare**

FREEDOM FOR COWS

**LEADING** edge

Andries Engelbrecht: 083 263 9675  
Werner van der Merwe: 083 700 2333



**NETAFIM™**

GROW MORE WITH LESS

**SHAPING THE FUTURE  
OF AGRICULTURE  
WITH SMART  
IRRIGATION SOLUTIONS**

Tel: +27 21 987 0477 • infoza@netafim.com • www.netafim.co.za



# The Global Food Challenge

DOW AGROSCIENCES PARTNERS WITH YOU TO:

## ① ENABLE YOUR PROGRESS

*Today's technology can help you continually improve your farm for the future. We can work side-by-side with you to help you fully realize the benefits of today's crop protection innovations and technologies.*

## ② OPTIMIZE PRODUCTION

*Growers need effective and innovative tools to control insects, plant diseases and weeds that can diminish your yield, damage your crops, and affect food safety. Choosing the best products keep your crops healthy, productive and profitable.*



**How Dow AgroSciences  
is contributing to find  
solutions for the  
growing world**



**Dow AgroSciences**



### 3 KEEP YOUR LAND SUSTAINABLE

*You want to take care of your land and your waterways to keep your farm productive for a long time, while doing your part to preserve the environment in your local community. We can help you manage resistant weeds, Insect pests and plant diseases. Helping you deploy innovative management practices and support the health of your soil.*



**Dow AgroSciences is a global research and development company and a leader in the agro-chemical market. We are continuously developing solutions that balance human needs with the preservation of our environment.**

**For more information please contact the registration holder:** Dow AgroSciences Southern Africa (Pty) Ltd.  
Reg. No. 1967/007147/07 • Paarl (021) 860 3620 • Pretoria (012) 361 8112 • Emergency No. 082 887 8079  
Private Bag X 160, Bryanston, 2021 • [www.dowagro.co.za](http://www.dowagro.co.za)

 [DowAgroSciencesZA](#) op Facebook

 [@DowAgroZA](#) op Twitter

 [DowAgroSciencesZA](#) op Instagram

*Solutions for the Growing World*

© <sup>TM</sup>Trademark of The Dow Chemical Company ("Dow") or an affiliated company of Dow

ELECTRIC SMALL SOLAR SOLUTIONS PREMIUM  
 MOTORS WORKS PIVOT CONTROL  
 MINI-NAMPO PUMP  
 ELECTRICAL SUBSTATIONS  
 CONSTRUCTION IP66 MOTOR SAVING DOL CONTROL  
 TRAINING MOTOR ENERGY  
 TRANSMISSION POWER MOTOR PAYBACK CALCULATION  
 & DISTRIBUTION SUPPLY CONTROL CENTRES DIESEL  
 EXTENDED GUARANTEES ENERGY SAVING DOL GENERATORS  
 TRANSFORMERS ENERGY SAVING DOL  
 IRRIGATION STARTER ENERGY SAVING DOL  
 SOLUTIONS PANELS LOW VOLTAGE SWITCHGEAR  
 ZEST ISO 9001 SOFT LEARNERSHIPS ENCLOSURES  
 ENERGY STARTERS  
 SUGAR SMOKE-EX SABS INVICTA VIBRATOR MOTORS PROJECTS  
 SECTOR MOTOR COOLING TOWER IE4 POWER WASH IP55  
 MOTORS ALTERNATORS SABS ELECTRIC MOTOR VSD  
 & CONTROL INSTRUMENTATION DISTRIBUTION  
 GENERATOR SETS MOTOR BOARDS  
 TURNKEY SOLUTIONS & DRIVE SASTA  
 COMBINATIONS  
 24 HR TECHNICAL PAYBACK DEMONSTRATION  
 SUPPORT FLAMEPROOF MOTORS SABS QUALITY 24 SUPPORT MOTORS W11 ALUMINIUM MOTORS  
 VENTILATION CONTROL SYSTEMS CUSTOM ZEST WEG Group  
 CONTAINERISED ENGINEERED SOLUTIONS MAINTENANCE CONTROLS  
 SUBSTATION SOLUTIONS AFRICA W22 ENGINEERING  
 ENERGY EFFICIENCY IE3 SERVICE CABLE & ENERGY  
 DESIGN VARIABLE SPEED DRIVES RACKING SUPPLY  
 COST SAVINGS LOW VOLTAGE W22 SUBSTATIONS  
 IRRIGATION CONTROL SYSTEMS IE4 SHAW CONTROLS  
 AGRIBUSINESS ENERGY VARIABLE SPEED DRIVES  
 DIRECT ELECTRIC MOTORS W11 ALUMINIUM MOTORS  
 ON LINE SPECIALISED ELECTRICAL STOCK HOLDING WEG TRANSFORMERS AFRICA  
 STARTER PANELS  
 AGRICULTURE CFW501 AUTOMATION ENI ELECTRICAL  
 CENTRE PIVOT SOLUTIONS PAD MOUNT MOTOR EFFICIENCY DRIVES



“... all of nature’s intentions.”

Rabbit meat is a wholesome alternative protein that is loved for its flavour by people all around the world.

The Rabbit Meat Industry in South Africa is in its 8th year and expanding to meet market demands abroad and to service the rapid developing local market.



# START A RABBIT FARM TODAY!

**FROM R4 000 PER PRODUCTION DOE**

WE OFFER THE FOLLOWING SERVICES:

- Breeding Stock Supply
- Training and Support
- Humane Breeding Equipment
- Housing Design and Plans
- Unique Rabbit Farming Software
- 10 Year Supply Contract
- EIA Assessments (when required)
- Slaughter Capacity / Facilities
- Minimum 150 Startup Production Units
- Up to 10 000 Commercial Production Units

FOR MORE INFORMATION EMAIL US YOUR CONTACT DETAILS AND YOUR AREA OR LOCATION (PROVINCE):

John Falck : +27 (0) 71 042 8930  
Oliver Brettschneider : +27 (0) 72 226 9694  
Kholekile Mbanga : +27 (0) 82 997 2657  
Pieter Keyser : +27 (0) 83 480 0971

Website : [www.coniglio.co.za](http://www.coniglio.co.za)  
Email : [info@coniglio.co.za](mailto:info@coniglio.co.za)

**DIY DAMS ALSO AVAILABLE | 10 YEAR WARRANTY**

ZincAl tanks suitable for human consumption

Supplied with a certificate

4 x 2.3 m Zinc Tank (29 kl)	- R 16 900	8 x 2.3 m Zinc Tank (116 kl)	- R 42 700
6 x 2.3 m Zinc Tank (65 kl)	- R 28 750	15 x 2.3 m Zinc Tank (406 kl)	- R 134 500

**PRICES INCLUDE:**

Roof | ZincAl | Liner | 50 mm Outlet | 40 mm Overflow | Installation and VAT. Transport not included

**ZincAl and grain dams**

4 x 2.3 m Zinc dam (29 kl)	- R 12 400	8 x 2.3 m Zinc dam (116 kl)	- R 26 800
6 x 2.3 m Zinc dam (44 kl)	- R 14 900	12 x 2.3 m Zinc dam (261 kl)	- R 56 300
6 x 2.3 m Zinc dam (65 kl)	- R 19 400	14 x 2.3 m Zinc dam (354 kl)	- R 72 900

**PRICES INCLUDE:**

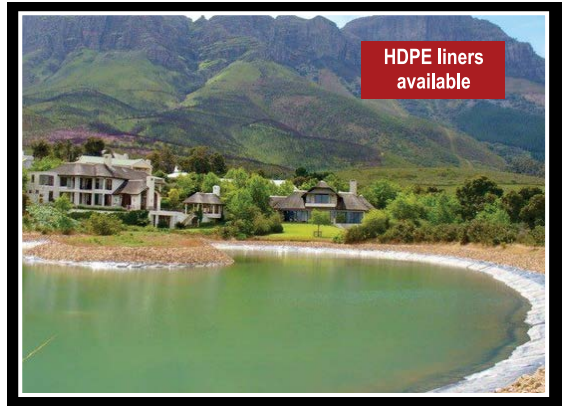
ZincAl | Lining | 50 mm Outlet | 40 mm overflow | Installation and VAT. Transport not included

**ZINCAL DAMS**



Reservoirs  
up to 522 kl

**EARTH DAMS**



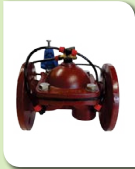
HDPE liners  
available

MES CONSULTANTS - 082 563 4427

Any size ZincAl dam, grain dam, ZincAl tank or lining can be manufactured on request. 0.8 to 1.2 mm ZincAl sheets with a life expectancy of 2 to 4 times longer than that of traditional sheets are used. 850 GSM PVC linings are manufactured with the aid of a high-frequency welding process. Linings are UV resistant. Material of the same thickness is used for the walls and the floor. Should the thickness differ, you get your lining free.

Jannie +27 (0) 72 600 0179 | Boet +27 (0) 82 496 1934 | Office: +27 (0) 76 307 7573  
Email: sales@nwdamme.co.za | Website: www.nwdamme.co.za

## Perfekte oplossings in besproeiingsbestuur



Doen navraag by jou naaste besproeiings handelaar oor Agriplas Produkte

[www.agriplas.co.za](http://www.agriplas.co.za)



**KAAPSTAD - Hoofkantoor**  
 Posbus 696, Brackenfell 7561  
 Tel: +27 21 917 7177  
 Faks: +27 21 917 7200

**GAUTENG**  
 Posbus 11052, Randhart 1457  
 Tel: +27 11 908 2204  
 Faks: +27 11 908 5312

**MPUMALANGA**  
 Suite 63, Postnet X 11326, Nelspruit 1200  
 Tel: +27 13 755 3510  
 Faks: +27 13 755 3505



# RELIANCE

## POULTRY EQUIPMENT

Email: [sales@reliancepoultry.co.za](mailto:sales@reliancepoultry.co.za)



### COMMERCIAL POULTRY KEEPING CAGES

Multiple tiered cages available as single units or custom-built to fit requirements. Supplied complete with automated feeding-gantry or chain feeding systems. Manure removal and manure handling conveyers. Horizontal self locking gates. Standard thickness of 0.8mm and 1mm. One nipple and drip cup per partition. One 5lt header tank including float valve per tier. Wire thickness - 2.5mm. Cages are available in starter units and follower units, accommodating 100 commercial layers per two tier cage, 150 commercial layers per three tier cage and 200 commercial layers per four tier cage.

**CONTACT:**  
**Johann Muller**  
 +27 (0) 82 561 4731

Manufacturing Excellence for Africa



**WWW. AGRIF**



Get connected to SA... Just a click away!



LATEST NEWS

Duress pellentesque mauris quis metus sagittis laoreet. Maecenas mollis fringilla dolor sed blandit malesuada eget. [MORE](#)

What are you looking for?

Where are you looking?



WHAT IT'S ALL ABOUT

Look no further as the answers to all of your enquiries are now available in one place. AGRIFOODSA.INFO is your complete online directory. [More](#)



AGRIFOODSA MAGA

Simply enter the keyword, supplier or agent you're looking for in the preferred area and get instant and accurate results. [More](#)



STAY UP TO DATE

Simply enter the keyword, supplier, producer or agent you're looking for in the preferred area and get instant and accurate results. [More](#)



ENTER AND WIN!

Simply enter the keyword, supplier or agent you're looking for in the preferred area and get instant and accurate results. [More](#)



HOW TO USE THE WEBSITE

Simply enter the keyword, supplier, producer or agent you're looking for in the preferred area and get instant and accurate results. [More](#)



BE SEEN IN THE INDUSTRY

Simply enter the keyword, supplier or agent you're looking for in the preferred area and get instant and accurate results. [More](#)

# Michelin Ultraflex range



Michelin Ultraflex technologies protects the soil of your farm and reduces your operating costs.





Your love for the land has allowed you to raise and cultivate crops under the most challenging conditions.

**LEGENDS AREN'T BORN, THEY'RE MADE. GEDORE.**

**GEDORE**  
TOOLS FOR LIFE



**LOCALLY MANUFACTURED & GUARANTEED FOR LIFE**

Hot forged for exceptional durability, our premium quality, professional grade hand tools are precision crafted and each carries GEDORE's signature lifetime guarantee.



Visit [www.gedore.co.za](http://www.gedore.co.za) to view our online catalogue.



BEETLEINC-GED585



# SERVICING & ASSEMBLING OF ANY AND ALL PUMPS

## SUPPLIER OF SPRAYING PARTS

WE SUPPLY:

Nozzles | Nozzle Holders | Jacto | Pumps | Strainers | Clamps | Hose | Fittings | Tanks  
Installation | Hydraulic Pumps | Spraying Equipment



**\* STOCKIST OF QUANTUM & ARAG \***

Pieter Venter: +27 (0) 60 960 6038 | Office: +27 (0) 71 657 7526 | Email: [spuitparte@gmail.com](mailto:spuitparte@gmail.com)

MES CONSULTANTS - 082 583 4427

# FEELER WHEEL LOADERS



**HD 916**  
1.6 TON



**HD 912**  
1.2 TON



**HD 920**  
2 TON



**HD 930**  
3 TON



**HD 950**  
5 TON

**Francois Griesel**  
082 753 6633

[francois@feelerafrica.co.za](mailto:francois@feelerafrica.co.za)

**BD Terblanche**  
082 550 7813

[BD@feelerafrica.co.za](mailto:BD@feelerafrica.co.za)

**Christo de Beer**  
082 877 6773

[christo@feelerafrica.co.za](mailto:christo@feelerafrica.co.za)



# TLB BACKHOE LOADERS



## HD 60

**CARRARO** synchroshuttle transmission



**120 LPM**  
hydraulic flow

**2.96 m**  
dump height

**7178 Kgf**  
bucket break-out force

**3.39 m**  
load over height

## HD 96

**CARRARO** synchroshuttle transmission



**134 LPM**  
hydraulic flow

**2.96 m**  
dump height

**8183 Kgf**  
bucket break-out force

**3.61 m**  
load over height

[www.feelerafrica.co.za](http://www.feelerafrica.co.za)

38 Rokewood Street, Pomona, Kempton Park, 1619





*Making sure your crop stays irrigated this summer*



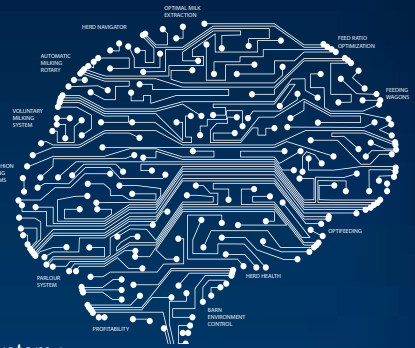
[www.vegapumps.co.za](http://www.vegapumps.co.za)

012-548 7204 / [utilitiesales@aqslt.co.za](mailto:utilitiesales@aqslt.co.za)

Available in stores and branches nation wide.

To view our video use the QR Code above or go to the following link: <https://youtube.com/ITZLzm-Gmbw>

**Introducing DeLaval body condition scoring BCS.**  
**Daily, automatic scoring of your cows.**



The DeLaval BCS System :

- Delivers daily, consistent and accurate scoring
- Provides individual, group and herd overview
- Helps improve cow health and milk yield
- Facilitates optimised feeding
- Removes hassles of scoring cows in the barn

Contact details :

(Cape) [eugene.duvenage@delaval.com](mailto:eugene.duvenage@delaval.com)

(KZN) [callum.symons@delaval.com](mailto:callum.symons@delaval.com)

(Central) [mike.mouton@delaval.com](mailto:mike.mouton@delaval.com)

Dealers across South Africa and Sub-Saharan Africa



**STUMBELBLOC**



**BUILD HOUSE WALLS FOR R 98, 00/m<sup>2</sup>**



Contact us now for more information:  
[www.stumbelbloc.com](http://www.stumbelbloc.com)  
 or call 083228 8036

**MAKE YOUR OWN BLOCKS AND BUILD YOURSELF**

# Stop Rotor verliese



**Moeg vir graan op die grond?  
Hou op sukkel!!!!  
Nuwe Konkawe uit VSA vir John Deere en Case Stroper**

Andre: 082 774 8935  
Email: [info@cropangel.co.za](mailto:info@cropangel.co.za)  
Web: [www.cropangel.co.za](http://www.cropangel.co.za)



## **Voordele:**

- Beperk verliese
- Stroop'n beter en skoner monster
- Stroop vinniger
- Spaar brandstof
- Minder opslag
- Vergemaklik stroper verstellings
- Een stel konkawe vir alle gewasse

Stelsels beskikbaar vir John Deere STS en S reeks.  
Case IH alle Flagskip modelle



WEBTUISTE VIDEO

# Optimise your animal feed production

Floating Fish Food & all animal feed | Full Fat Soya | Maize & Grain | Starch



Designers & manufacturers of Hammer Mills, Extruders, Full Feed Plants, Dryers, Blenders, Coolers, Augers, all related spares and accessories

Cost effective solutions for small to large scale farmers and feed production plants.



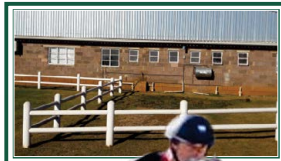
For more information: Tel: +27 11363-3166 Cell: +27 826648682  
info@quadroalloys.co.za or visit our website: www.quadroalloys.co.za



High Quality • Minimal Wearing • Innovative Technology



## MANUFACTURERS OF TURNED PINE POST & RAIL FENCING & JUMPING POLES



- All material are SABS approved
- Pressure treated against rot and insect damage with CCA
- Once installed painted with a good quality exterior wood treatment or paint to minimise the effects of weathering on the timber



**ROD FREEZE:**  
+27 (0) 33 503 1963  
+27 (0) 82 573 4544  
rod@fartimbers.co.za

MES CONSULTANTS - 082 593 4427

# ATLASWARE®

## HOT OR COLD... ATLASWARE WON'T LET YOU DOWN

BPA  
FREE

COLD 24 HOURS  
HOT 36 HOURS  
ONE & ONLY

FLASKS THAT STAY COOL WHEN IT'S HOT – AND VICE VERSA  
BOTTLES DESIGNED USING SPACECRAFT TECHNOLOGY

- Highly insulating layer housed between two layers of durable high tensile stainless steel
- Available in a variety of trendy colours
- Common sense sizes ideal for out –and indoor
- Use hot or cold – tested and after 36 hours the water was still hot
- Narrow to fit in school bags and light weight
- Available in 4 sizes
- Life time guarantee

THIS FLASK MAKES A GREAT GIFT AND CAN BE PERSONALIZED TO INCLUDE  
YOUR LOGO!

[www.atlasware.co.za](http://www.atlasware.co.za)

MES CONSULTANTS - 082 563 4427



To order or find out more about the Atlasware Flasks please call us on:  
Tel: +27 (0) 12 345 3108 | Email: [enquiries@atlasware.co.za](mailto:enquiries@atlasware.co.za)

AVAILABLE AT:

 Hinterland

 AGRIMARK

 vkb  
Landbou (Edms.) Bpk.

 OUTDOOR  
WAREHOUSE  
for every adventure

 trappers  
essential outdoor gear

 Kloppers  
expert

..... or find your nearest shop on our website



# PREDICTABLE UNIFORMITY

Value to your business

## Best uniformity matters

- Consistent product weight ranges
- Efficient processing performance
- Best uniform 'as hatched' broilers
- Higher yield value
- Reduced product 'downgrade'
- Increased profits



[cobb-vantress.com](http://cobb-vantress.com)



ONE FAMILY.  
ONE PURPOSE.



CONTACT: THEO BEZUIDENHOUT

Tel: +27 (0) 12 003 1995 | Cell: +27 (0) 83 257 3025 | Fax: +27 (0) 86 681 0398 | Email: [theob@rcffoods.com](mailto:theob@rcffoods.com)

163 Staal Street, Pretoria West, 0183, South Africa



**TECHNOPOL SA**  
ENERGY SAVING MATERIALS

# LIVESTOCK HOUSING & INSULATION

## Industry Leaders in Expanded Polystyrene Products

- Manufacturers of expanded polystyrene products for domestic and export markets
- Bulk insulation and derived thermal insulation products
- Thermal insulation products for walls, roofs, ceilings & floor application



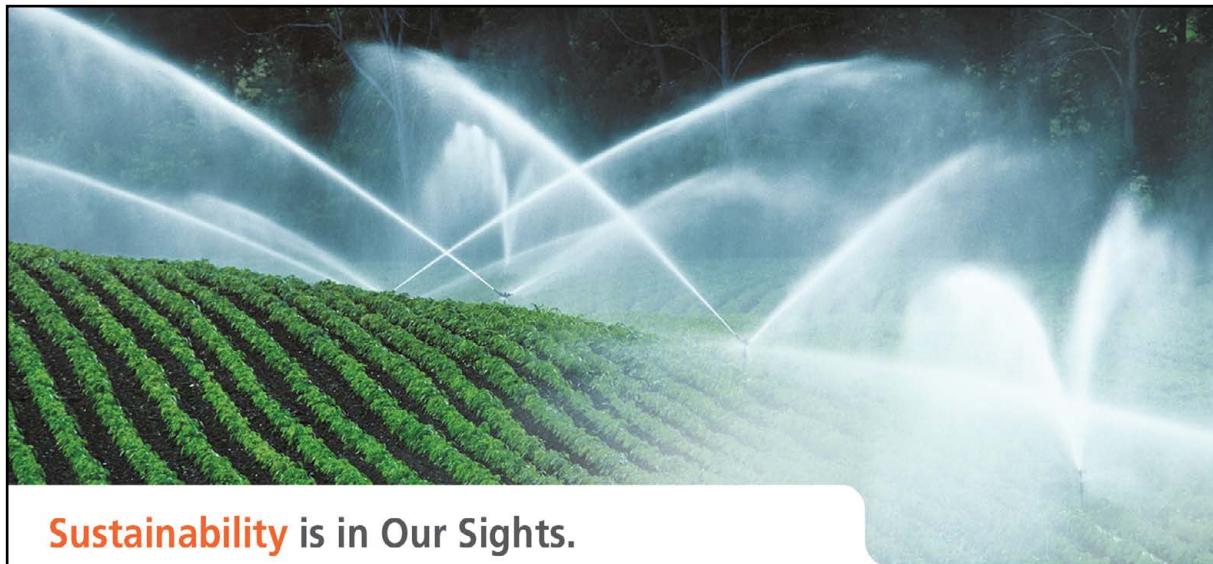
**COST EFFECTIVE ENERGY SAVING MATERIALS  
FOR ALL OUR FARMERS NEEDS!**

Contact us for more information:  
Lammie de Beer  
Tel : +27 (0) 11 363 2780  
Cell : +27 (0) 82 443 4461



[www.technopol.co.za](http://www.technopol.co.za)

MES CONSULTANTS - 082 563 4427



## Sustainability is in Our Sights.

KSB has been providing pumps and valves for more than 50 years to the farming community and other industries in South Africa. Our pumps and valves help farmers to get the water where it is needed. Whatever the agricultural application, KSB has the answer.

Irrigation pumps are used to pump water from a lower to a higher level from which the water then flows through channels to the fields requiring irrigation (lift operation) or to raise it to the required pressure head so that it can be sprayed on the fields via piping systems (sprinkling). The heads involved range from approximately 1 m for normal lift operation to 40 m for sprinkling. In special cases, heads exceeding 100 m may be required.

### ► Our technology. Your success.

Pumps • Valves • Service

KSB Pumps and Valves (Pty) Ltd

H/O • Tel: +27 11 876 5600, email: info-za@ksb.com • www.ksbpumps.co.za



### SUPPLIER & DISTRIBUTOR OF:

- Dolomitic & Calcitic Lime – bulk and bags
- Gypsum – bulk and bags
- Granulated Fertilizer & Fertilizer Blends

We strive for excellence in our after-sales service

- All products are registered
- Transport done at competitive rates
- We supply Kwa-Zulu Natal, Eastern Cape and Southern Free-State regions



#### Contact

Gaynor : +27 (0) 31 207 6763 – geysers@telkomsa.net  
 Warren : +27 (0) 83 255 2070 – warreng@idsinternet.co.za  
 René : +27 (0) 84 753 2301 – renes88@live.com

MES CONSULTANTS  
082 983 4428

# SUPERIOR PRODUCTS

## SUPERIOR PERFORMANCE



**SHOVA**



**Marina**



**strident**



**Clipper**



NEPTUN BOOT HAS BEEN SUPPLYING A RANGE OF TOP QUALITY BOOTS TO THE AGRICULTURAL AND FOOD PROCESSING INDUSTRIES SINCE 1977.

The SABS approved unisex Shova PVC boots, new Strident Camo boots, Marina ladies knee length boots, and Clipper children's calf length boots, are all hard working, hard wearing boots with excellent grip and sole support.

Neptun Boot is committed to delivering superior products, offering wearers comfort, support and protection wherever it is needed.

### INDUSTRIES



AGRICULTURE



FOOD PROCESSING



GENERAL PURPOSE



FORESTRY



MINING



SECURITY/ SAFETY



SETTING A NEW STANDARD  
IN SAFETY FOOTWEAR



1168@agriFocus

**SUPPLY AND SERVICING OF FEEDING, DRINKING AND CLIMATE CONTROL EQUIPMENT FOR ALL POULTRY PRODUCTION OPERATIONS**



**POULTRY & LIVESTOCK FARMING EQUIPMENT SUPPLIERS**

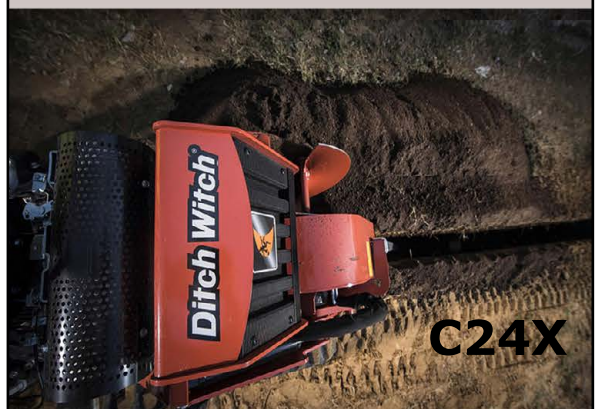
- Automatic Feeders
- Nipple and Bell Drinkers
- Layer Cages
- Breeder Nests
- Skov Systems and Spares
- Wetwalls and Cooling
- Bulk Feed Silos
- Cross Augers and Feed Weighers

sales@ppa.co.za | +27 (0) 11 708 3094 |  
www.ppa.co.za

**Vore nou vinniger as tevore**



**RT45**



**C24X**

Verspreiding en Produk ondersteuning deur:



Ons verskaf ook Graders, Backhoe Loaders (TLB's), Skidsteers, Excavators en nog meer.

**Met takke regoor Suid Afrika en verteenwoordigdes regoor Suidelike Afrika**

Webwerf: [www.elbequipment.com](http://www.elbequipment.com)  
Tel: +27 (0)11 306 0700



Meeting your needs, Exceeding your Expectations

**Proud Suppliers of  
premium agricultural equipment**

*Grain Storage Bins | Grain Conveyors & Elevators | Grain Dryers &  
Cleaners | Water Tanks | Reservoir Liners*



Telephone: +27(0)31 825 3546 | Email: [info@sbsagri.co.za](mailto:info@sbsagri.co.za) | Website: [www.sbsagri.co.za](http://www.sbsagri.co.za)

**AGRI  
SHALOM**

**KWALITEIT  
LANDBOUTOERUSTING**  
www.agrishalom.co.za



Tipwaens • Mobile vee hantering • Skrapers  
Kontak ons gerus om uit te vind oor landwyse handelaars  
sms jou naam na 32273 vir 'n konsultant om jou te skakel  
\* R1.00 sms koste van toepassing

Jan-Abraham Strauss • 082 636 1785 • strauss@agrishalom.co.za

- Rubberonderdele
- Stalbeplanning
- Voertoerusting (kragvoer)

- Dienste
- Voorverkoeling
- Kalf/Lamgrootmaaktoerusting

- Bestuurstelsels
- Automatisering
- Stelsels vir bokke

**PACKO RSA**  
MILKING & COOLING - OUR MISSION

Distributor of Fullwood **AVC** TM

**MELK & KOELING IS ONS MISSIE**

Drifontein - Posbus 669 - Hellbron - 9650  
TEL: 058 852 4907 SEL: 082 825 0976  
sample@telkomsa.net www.packorsa.co.za

**TireCity**  
Africa Pty Ltd

**SOLID TYRES**

**AGRIC TYRES**

**Branches In: JHB DBN CPT**

**TEL: 0861 777 772**  
Email: info@tirecity.co.za

**WWW.TIRECITY.CO.ZA**  
*Quality & Service That Never Sleeps*

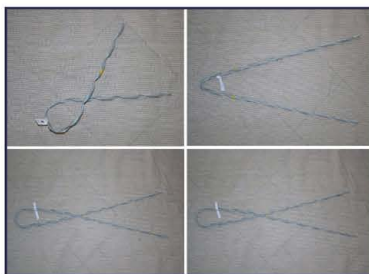


# PLUSNET/GEOTEX

A Division of the Master Plastics Group of Companies

## MORE THAN JUST NETS

Your Partner in Undercover Farming



# FEATURES OF PLUSNET SHADE NETS

- Providing flawless & cost effective netting solutions
- Ensuring optimal crop yields
- Innovation & product development
- Professional back-up & support



MES CONSULTANTS - 062 563 4427

Tel : +27 (0) 11 412 3954  
 Tel : +27 (0) 11 412 3960  
 Tel : +27 (0) 11 412 3962  
 Tel : +27 (0) 11 412 1002|3|4  
 Fax : +27 (0) 11 693 7743

PO Box 6402  
 Greenhills, Randfontein, 1767

nets@plusnet.co.za  
 www.shade-cloth.co.za



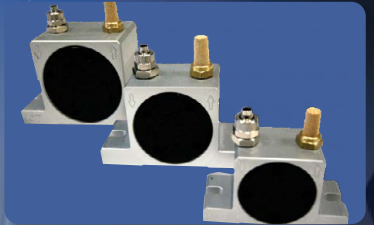


# OLI VIBRATORS

EFFICIENT DISCHARGE SOLUTIONS

## DESIGNED FOR AGRICULTURE

- PRODUCT FLOW AID'S: HOPPERS, BINS, SILO'S & CHUTES
- VIBRATING SCREEN APPLICATIONS



### OLI OFFERS TECHNICAL ADVICE WITH PRODUCT SIZING & ONSITE INSTALLATION ASSISTANCE

#### OLI'S PRODUCT RANGE INCLUDES:

- Electric motor vibrators
- Pneumatic linear & rotary vibrators
- Aerators
- Hydraulic vibrators



MES CONSULTANTS - 082 563 4427

OLI South Africa (PTY) Ltd  
Office: +27 (0) 11 392 1054 | Emile Oosthuyzen: +27 (0) 83 389 6133  
Sales & Enquiries : [sales.southafrica@olivibra.co.za](mailto:sales.southafrica@olivibra.co.za) | [www.olivibra.co.za](http://www.olivibra.co.za)



## ENTER AND WIN!

Here at AGRIFOODSA we're not simply content with getting your tractor on the right track, we also want to make your time off totally radical.

We're rewarding some of our fabulous users and readers with fantastic prizes just for browsing around our magazine, website and Facebook page.

Take a look at what we have on offer!

**AGRI**FOODSA  
INFO

Office: +27 (0) 12 997 3407 | Fax: +27 (0) 86 542 0704 | [info@agrifoodsa.info](mailto:info@agrifoodsa.info)

PRIZES SPONSORED BY

**M&S** CONSULTANTS  
SOUTH AFRICA



Head over to our

**SUPER COOL**

website

[WWW.AGRIFOODSA.INFO/COMPETITIONS](http://WWW.AGRIFOODSA.INFO/COMPETITIONS)

and put yourself in line to

**WIN** the PRIZES

on this page and more!



Enter our  
**THEMED**  
**facebook**  
PHOTO COMPETITIONS  
and stand to  
**WIN** a R100  
**takealot** com  
WEEKLY!

**WWW.AGRIFOODSA.INFO**



#### SUPERSPRAY SITRUS SPUITMASJEN

PUMP	Jacto 150 / 35 Bar 150 l/Min
SPRAYBOOMS	30 Nozzle Oscillating Turbo Venturi Nozzle – 1.2mm 3000lt Fibreglass with mechanical agitator – S/Steel pedals
TYRE	12 x 18 High Floatation Tyres
CHASSIS	127 x 64 Taper Flanged Channel Iron



#### ROOIVALK

750L Polipropileen Tenk  
 Gemeganiseerde onkruiddoder spuit  
 15" bande & bandveulings op hoë spoed as  
 Honda GX 160 petrolmotor & banjo termoplastiese sentrifigale pomp



## SPESIALISTE IN SPUITTOERUSTING

- Superspray
- Bateleur
- Jacto
- Cp 15 & Cp 3

## ALLE POMP ONDERDELE

- Imovilli
- Jacto
- Bertolini
- John Bean

Wikus Swart

+27 (0) 83 452 5398

Kantoor

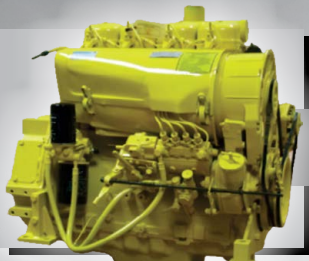
+27 (0) 15 345 1244

Epos

wikus@sprayrite.co.za

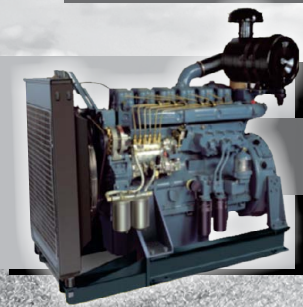
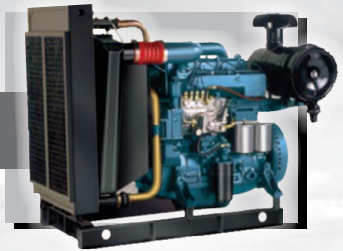
# RELIABLE DIESEL ENGINES FOR:

- Agriculture
- Water pumps
- Generators
- Mining applications
- Forestry



HA-Series  
14.0kW to 89.0kW

R-Series  
18.5kW to 118.0kW



SL-Series  
139.9kW to 222.3kW

DV-Series  
360.0kW to 532.1kW



Agricultural Engines  
3kw to 14.8 kW

+27 (0) 11 493 3330 | kirloskar@tiscali.co.za  
36 Rawbone Street, Ophirton, 2091



AMES CONSULTANTS - 082 563 4427

# CUSTOM PLANT SOLUTIONS (PTY) LTD

Reg No: 2016/169278/07



ATEGO 904LA ENGINE



AXOR OM457LA ENGINE



CUMMINS 6BTA ENGINE



CUMMINS 6CTA ENGINE



MAN D2866 ENGINE



MAN TGS GEARBOXES



SCANIA DC12-14 ENGINE



SCANIA DC912 ENGINE

**WE CARRY A LARGE RANGE OF  
MERCEDES, VOLVO, MAN & SCANIA  
ENGINES | GEARBOXES & CABS IN STOCK**

SUPPLIERS OF:

Truck Engines | Bus Engines | Gearboxes | CABS | Diffs | Plant Equipment |  
Cranes | Gensets | Compressors and much more

Advertised is only a small selection of our stock  
All spares sold carry a two month's warranty

**COMPLETE TRUCKS & TIPPERS FOR EXPORT ONLY**



ISUZU DAY CAB



AXOR MP2 DAY CAB



MAN TGS DAY CAB



MAN TGM SLEEPER CAB



SCANIA R SERIES SLEEPER CAB



ATEGO DAY CAB



AXOR SLEEPER HIGH ROOF



VOLVO FH12 V12 GLOBETROTTER



MAN D2066 COMMON RAIL ENGINE



ATEGO 906LA ENGINE

Colin +27 (0) 83 777 9130 - colin@customplantsolutions.co.za  
Keith +27 (0) 83 791 3777 - keith@customplantsolutions.co.za



# Burquip

international

Burquip International has been a leading manufacturer, importer and distributor of high speed trailer and agricultural implement trailer components in the Southern African market for over 25 years.

We offer a wide range of high speed and agricultural trailer components that will serve the unique requirements of each of these markets from one of the three branch outlets within South Africa. Exports to African countries include amongst others Namibia, Botswana, Zimbabwe, Mozambique, Zambia and Malawi. Burquip's axle manufactured standard length trailer axles are readily available from outlets and any custom order or large quantity order can be supplied within 10 days from receipt of order. Burquip's sales representatives are trained to assist you with your enquiries and will also prepare quotations on your request.



Western Cape:  
PO Box 281, Kuilsriver, 7579  
Tel: 021 907 1900 • Fax 021 907 1999  
Email: [information@burquip.co.za](mailto:information@burquip.co.za)

Kwazulu-Natal:  
PO Box 1076, Pinetown, 3600  
Tel: 031 792 1020 • Fax 031 792 1018  
Email: [salespine@burquip.co.za](mailto:salespine@burquip.co.za)

Gauteng:  
PO Box 25769, East Rand, 1462  
Tel: 011 396 6000 • Fax 011 397 4018  
Email: [salesjhb@burquip.co.za](mailto:salesjhb@burquip.co.za)

[www.burquip.co.za](http://www.burquip.co.za)





# Hart-Top

Trading and Engineering CC

**Stefan Hartsliet**  
 +27 12 951 5290  
 Stefan@hart-top.co.za  
 Fax2Mail 086 608 9314

**Les Bray**  
 +27 12 950 7265  
 les@hart-top.co.za  
 Fax2Mail 086 570 7717

**Rachel Landman**  
 +27 12 949 6876  
 Rachel@hart-top.co.za

Plot 55 Ash Road, Swacina Park, Pretoria West



2010 Cobalt Baby Welldeck



2013 Doosan DX255 LC Excavator with 5300 hours



2013 CAT 928F Loader



2016 Komatsu PC88-MR with 1000 hours



2006 Komatsu D41E Dozer with 12 600 hours



2015 CAT 140K Grader with 2900 hours

Note Some of Our Machines are working on site, so please call before coming to our yard

[www.hart-top.co.za](http://www.hart-top.co.za)

## HENKRU Vervaardiging



HERBOU VAN SOILMASTER PLANTERS



**HENKRU FYNSAAD PLANTER**  
 Besikbaar in volgende wydtes:  
 2.4m-3m & 5m (hidrolies)



HENKRU BEITELPLOEG: 7 | 9 | 11 | 13 | 15 - TAND

Kantoor : +27 (0) 51 421 3086

Faks : +27 (0) 51 421 3086

Hentie Kruger : +27 (0) 83 304 2345

Gerhard Kruger : +27 (0) 82 550 0241

Epos : henkru007@gmail.com

Webtuiste : [www.vrystaatrekkers.co.za](http://www.vrystaatrekkers.co.za)

# BECAUSE HARD WORK SHOULD BE FUN!

1050mm Universal Tow Mower



250Ltr Tow Boom Sprayer



100Ltr 8m Mounted Boomless Sprayer



12 Volt Mounted Spreader



Tow Broadcast Spreader



Steel Cage Dump Cart



**Over 50 different implements available to suit Quad Bikes, Lawn Tractors and Ride-on Mowers**

Mowers | Dump Carts | Weed Wipers | Sprayers | Wagons | Chariots | Spreaders | Aerators | Arena Rollers | Rollers | Sweepers | Harrows | Rakes | Tankers | Tool Bars

TURN YOUR QUAD BIKE INTO A WORK HORSE!

Tel: +27 (0) 33 330 6247  
 Email: info@quadmaster.co.za  
 Website: www.quadmaster.co.za

**Q M**  
**QUAD MASTER**  
 ATV IMPLEMENTS

**ONS DOEN:**

- DAKKIES - VERSKEIE KLEURE
- BALL VELVES
- KRYWAENS - GEWOON & WATER ASOOK KRYWA WIELE
- WATER & VOERKRIPPE VIR BEESTE & SKAPE
- KAR MATJIES
- BOU TREKKER STALLE
- BOU SKAVELS
- VERKOOP TROK "FLAPS"
- PLASTIC MOLDING



PROPSHAFTS...  
TROPKE, BAKKIES,  
VOERTUIE, TREKKERS

WATER & GEWONE  
KRYWAENS

CV JOINTS...  
VOERTUIE & BAKKIES

CANOPIES & DSCN -  
POWDERCOATING...TREKKER STALLE

Gerrie | Vera (Boss Propshaft): +27 (0) 18 632 1523 | [bossprop2605@gmail.com](mailto:bossprop2605@gmail.com)

MES CONSULTANTS - 082 563 4427

# TILL MASTER

Office : +27 (0) 33 394 4543

Fax : +27 (0) 33 394 2278

216 Victoria Road, Pietermaritzburg

**MANUFACTURERS &  
SUPPLIERS OF QUALITY  
AGRICULTURAL  
MACHINERY**



[www.tillmaster.co.za](http://www.tillmaster.co.za)



MES CONSULTANTS - 082 563 4427

VISIT OUR WEBSITE FOR MORE PRODUCTS ...

ERLO DREWS: +27 (0) 83 320 0698



# 4x4

## CRUISER AND TOYOTA 4WD EXPERTS



- Parts - original, replacement and used
- Reconditioned engines, transmissions and differentials
- Fully equipped and RMI certified workshop
- Repairs, maintenance and rebuilds
- Suspensions, snorkels and accessories
- Cruiser and Toyota 4WD Game viewers
- Specialised mine vehicle manufacturing
- Exclusive branded clothing

### LAND CRUISER AND TOYOTA 4WD ONE STOP SHOP FOR PARTS AND MORE

#### CONTACT US

+27 [0] 12 545 0200  
 info@n14x4.co.za  
 www.N14x4.co.za

#### ADDRESS

**PYRAMID** Plot 6, Olifant Street, Haakdonginglaagte, Pyramid, Pretoria  
**MONTANA** Shop 5, Montana Value Centre, 1151 Tibouchina avenue, Montana Park, Pretoria

# JBH Wheels cc

www.jbhwheels.co.za

Tel: 011 739 5726  
 Fax: 086 241 2762  
 Barnie: 083 698 3918  
 Hannes: 083 391 5690  
 Dewald 083 438 6305  
 barnie@jbhwheels.co.za  
 hannes@jbhwheels.co.za  
 gerda@jbhwheels.co.za  
 sales@jbhwheels.co.za

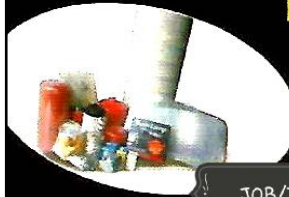


Manufacturers and suppliers of Industrial, Agricultural and Heavy Duty wheel rims. Special modifications and conversions on all leading models such as John Deere, Claas, New Holland, Landini, Kubota, Massey Ferguson and Case.



## ANDERBOLT TRUCK & REBUILD CENTRE

- Repairs to All Makes of Trucks
- New & Second Hand Spares
- Engine Repairs & Overhauls
- Gearbox Repairs & Overhauls
- Diff repairs & Overhauls
- Speedo Repairs & Installations
- Tacho's Repairs & Installations
- Fleet Maintenance
- Diagnostics on All Trucks



JOB/TARA

Tel: 011 910 5631 | Cell: 083 394 5887  
 Email: anderbolttrucks@gmail.com  
 161 c Dormehl str, Anderbolt, Boksburg



## KONSTRUKSIE

### ONS SPESIALISEER IN:

- Silo's
- Watertenks
- Dieseltenks
- Petroltenks
- Dieseltenk Sleepwaens
- Dubbelwand Tenks

### ONS VERVAARDIG OOK:

- Doringdraad
- Verskuifbare Hekke

#### Skakel ons gerus by:

Kantoor : +27 (0) 63 308 3027  
 Pieter : +27 (0) 82 775 1106  
 Epos : pmsmitkonstruksie@gmail.com  
 Webblad : www.pmsmitconstruction.co.za

MES CONSULTANTS - 082 960 4427



# Be seen on AGRIFOODSA.INFO



**AGRIFOODSA**  
INFO

Office: +27 (0) 12 997 3407 | Fax: +27 (0) 86 542 0704 | [info@agrifoodsa.info](mailto:info@agrifoodsa.info)

# Get connected to the farmer... just a click away!

If you're not advertising on the AGRIFOODSA.INFO website yet, you need to get right on it!

With improved functionality and enhanced design, it promises to be a fundamental tool for farmers and enthusiasts of the agricultural and secondary industries in South Africa.

The new website affords the user the opportunity to read and download the AGRIFOODSA Suppliers Guide Magazine, offering additional exposure to our print advertisers.

There are advertising options to meet everyone's needs. Possibilities range from premium directory listings to banner adverts on the HOME page. All major players in Agri and food are able to get incredible coverage and marketing benefits at very reasonable prices.

Advertisers who appear in our Suppliers Guide have the opportunity to book premium listings on our website at a fraction of the standard price.

As part of the AGRIFOODSA.INFO website, advertisers will enjoy the following brand promotion:

- Google Search Engine Optimization of the AGRIFOODSA.INFO website;
- Advertising of the AGRIFOODSA.INFO website in various other Agricultural publications;
- Coverage on our Social Media pages; and
- Exposure through our monthly newsletter which will be e-mailed to 18,000 links across Southern Africa.

We are also presenting website advertisers with the opportunity to have broadcasts, special offers or short articles on new products and/or services posted to our brand-new NEWS Page.

We are driven by performance,  
passionate about our clients  
and focussed on achieving results.

Look out for the fresh, innovative AGRIFOODSA.INFO website LIVE!

For more information or to advertise, contact us today.

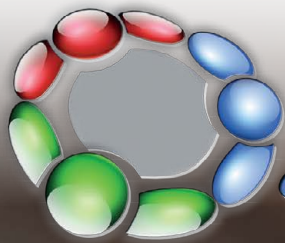
[WWW.AGRIFOODSA.INFO](http://WWW.AGRIFOODSA.INFO)

# DISTRIBUTION LIST

TOWN   CITY	SHOP	PROVINCE
ALBERTINIA	SSK AGRILAND	WESTERN CAPE
AMERSFOORT	HINTERLAND	MPUMALANGA
BAINSVLEI	BAINSVLEI CO-OP	FREE STATE
BEAUFORT WES	BKB	WESTERN CAPE
BELFAST	HINTERLAND	MPUMALANGA
BERGVILLE	HINTERLAND	KWAZULU-NATAL
BETHLEHEM	HINTERLAND	FREE STATE
BIZANA	TWK	EASTERN CAPE
BLOEMFONTEIN	BKB	FREE STATE
BLOEMHOF	SUIDWES LANDBOU	FREE STATE
BOSHOF	SUIDWES LANDBOU	FREE STATE
BOTHAVILLE	SUIDWES LANDBOU	FREE STATE
BRONKHORSTSPRUIT	AFGRI	MPUMALANGA
BULTFONTEIN	HINTERLAND	FREE STATE
CAROLINA	HINTERLAND	MPUMALANGA
CAROLINA	TWK	MPUMALANGA
CEDERVILLE	TWK	KWAZULU-NATAL
CERES	KAAP AGRI	WESTERN CAPE
CRADOCK	AGRICO	EASTERN CAPE
CULLINAN	AFGRI	GAUTENG
DE AAR	BKB	NORTHERN CAPE
DELMAS	HINTERLAND	MPUMALANGA
DELMAS	DISCOUNT IMPLEMENTS	MPUMALANGA
DUNDEE	HINTERLAND	KWAZULU-NATAL
ELLIOT	OVK	EASTERN CAPE
ERMELO	HINTERLAND	MPUMALANGA
ERMELO	PROTEA TYRE	MPUMALANGA
FORT BEAUFORT	THE CO-OP	EASTERN CAPE
GEORGE	SSK AGRILAND	WESTERN CAPE
GERDAU	NWK	NORTH WEST
GRAAFF-REINET	OVK	EASTERN CAPE
GRAAFWATER	KAAP AGRI	WESTERN CAPE
GREYTOWN	TWK	KWAZULU-NATAL
HANKEY	THE HUMANSDORP CO-OP	EASTERN CAPE
HARRISMITH	HINTERLAND	FREE STATE
HARTSWATER	HINTERLAND	NORTHERN CAPE
HEIDELBERG	HINTERLAND	GAUTENG
HEIDELBERG	SSK AGRILAND	WESTERN CAPE
HEILBRON	HINTERLAND	FREE STATE
HERBERTSDALE	SSK AGRILAND	WESTERN CAPE
HEROLD	SSK AGRILAND	WESTERN CAPE
HOEDSPRUIT	OBARO	LIMPOPO
HOOPSTAD	HINTERLAND	FREE STATE
HOOPSTAD	SUIDWES LANDBOU	NORTH WEST
HUMANSDORP	THE HUMANSDORP CO-OP	EASTERN CAPE
IXOPO	TWK	KWAZULU-NATAL
JAN KEMPDORP	HINTERLAND	NORTHERN CAPE
JOHANNESBURG MARKET	REBELO, HALL 1	GAUTENG
KLERKSDORP	HINTERLAND	NORTH WEST
KNYSNA	SSK AGRILAND	WESTERN CAPE
KRAKEEL	SSK AGRILAND	EASTERN CAPE
KROONSTAD	HINTERLAND	FREE STATE
KURUMAN	AGRIMARK	NORTHERN CAPE
KYA SANDS	ANB VET	GAUTENG
LADYSMITH	HINTERLAND	KWAZULU-NATAL
LEEUDORINGSTAD	SUIDWES LANDBOU	NORTH WEST
LEPHALALE	OBARO	LIMPOPO
LETSITELE	NTK	LIMPOPO
LICHTENBURG	BEARING MAN GROUP	NORTH WEST
LICHTENBURG	BOSS PROPSHAFT BALANCING	NORTH WEST
LOUWNA	SUIDWES LANDBOU	NORTH WEST
LOXTON	KAROO MEAT FARMERS CO-OP	NORTHERN CAPE
LUTZVILLE	KAAP AGRI	WESTERN CAPE
LYDENBURG	HINTERLAND	MPUMALANGA
MAKHADO	KAAP AGRI	LIMPOPO



TOWN   CITY	SHOP	PROVINCE
MALMESBURY	KAAP AGRI	WESTERN CAPE
MARBLE HALL	TWK KUNSMIS	LIMPOPO
MIGDOL	SUIDWES LANDBOU	NORTH WEST
MISGUND	SSK AGRILAND	WESTERN CAPE
MOSSELBAY	SSK AGRILAND	WESTERN CAPE
NABOOMSPRUIT	OBARO	LIMPOPO
NELSPRUIT	HINTERLAND	MPUMALANGA
NEWCASTLE	HINTERLAND	KWAZULU-NATAL
NIGEL	HINTERLAND	GAUTENG
ODENDAALSRUS	HINTERLAND	FREE STATE
OP-DIE-BERG	KAAP AGRI	WESTERN CAPE
ORANJESIG	DIY SUPERSTORE	FREE STATE
ODSHOORN	KLEIN KAROO CO-OP	WESTERN CAPE
PAARL NORTH	KAAP AGRI	WESTERN CAPE
PARYS	HINTERLAND	FREE STATE
PETRUSBURG	HINTERLAND	FREE STATE
PHILIPPI	KAAP AGRI	WESTERN CAPE
PIETERMARITZBURG	MASCOR	KWAZULU-NATAL
PIETERMARITZBURG	PALMER AGRI & TRACTOR	KWAZULU-NATAL
PIETERMARITZBURG	TWK	KWAZULU-NATAL
PIETERSBURG	NTK	LIMPOPO
PIKETBERG	KAAP AGRI	WESTERN CAPE
PLETTENBERGBAY	SSK AGRILAND	WESTERN CAPE
PONGOLA	TWK	KWAZULU-NATAL
PORT ELIZABETH	THE HUMANSDORP CO-OP	EASTERN CAPE
PORTERVILLE	KAAP AGRI	WESTERN CAPE
POTCHEFSTROOM	HINTERLAND	NORTH WEST
POTCHEFSTROOM	KLEINPLAAS PYPE	NORTH WEST
POTGIETERSRUS	OBARO	LIMPOPO
PRETORIA - ATTERBURY	FARM CITY	GAUTENG
PRETORIA - MONTANA	N1 4X4	GAUTENG
PRETORIA - PYRAMID	N1 4X4	GAUTENG
PRIESKA	GWK	GAUTENG
PRINCE ALBERT	KLEIN KAROO CO-OP	NORTHERN CAPE
QUEENSTOWN	BKB	WESTERN CAPE
RAWSONVILLE	KAAP AGRI	EASTERN CAPE
REIVILO	SUIDWES LANDBOU	WESTERN CAPE
RIEBEEK-WEST	KAAP AGRI	NORTH WEST
RIVERSDAL	SSK AGRILAND	WESTERN CAPE
RUSTENBURG	OBARO	WESTERN CAPE
SENEKAL	AFGRI	NORTH WEST
SPRINGBOK	AGRIMARK	FREE STATE
STELLA	SUIDWES LANDBOU	NORTHERN CAPE
STELLENBOSCH	KAAP AGRI	NORTH WEST
STILL BAY EAST	SSK AGRILAND	WESTERN CAPE
SWELLENBAM	SSK AGRILAND	WESTERN CAPE
THEUNISSEN	HINTERLAND	WESTERN CAPE
TOSCA	SUIDWES LANDBOU	FREE STATE
TZANEEN	KAAP AGRI	NORTH WEST
TZANEEN	NTK	LIMPOPO
TZANEEN	SPRAYRITE	LIMPOPO
TZANEEN	WD SAAILINGE	LIMPOPO
UNDERBERG	TWK	LIMPOPO
UNIONDALE	SSK AGRILAND	KWAZULU-NATAL
UPINGTON	AGRIMARK	WESTERN CAPE
VENTERSDORP	HINTERLAND	NORTHERN CAPE
VEREENIGING	HINTERLAND	NORTH WEST
VEREENIGING	VICRO BULK	GAUTENG
VOLKSRUST	BKB	GAUTENG
VREDE	BKB	MPUMALANGA
VRYBURG	SUIDWES LANDBOU	FREE STATE
VRYHEID	HINTERLAND	NORTH WEST
WELKOM	HINTERLAND	KWAZULU-NATAL
WESSELSBRON	SUIDWES LANDBOU	FREE STATE
WINTERTON	TWK	FREE STATE
WOLMARANSTAD	HINTERLAND	KWAZULU-NATAL
WOLMARANSTAD	SUIDWES LANDBOU	NORTH WEST
WONDERFONTEIN	TWK	NORTH WEST
WORCESTER	KAAP AGRI	MPUMALANGA
		WESTERN CAPE



# AGRIFRIEND *Equipment*



  
**SUIDWES**

**CASE IH**  
AGRICULTURE

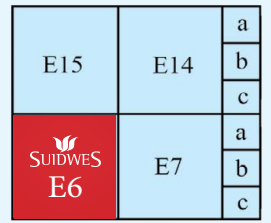
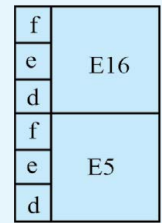
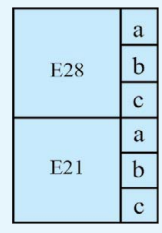
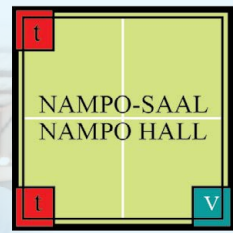
## BEMARKERS, ONDERDELESENTRUMS EN WERKSWINKELS

Bothaville 082 388 0578 • Bultfontein 051 853 1747 • Stella 053 983 0194  
Wolmaransstad 083 626 6479 • Bloemhof 053 433 0274 • Migdol 053 965 0844  
Christiana 053 441 2235 • Hertzogville 053 421 9218 • Hoopstad 082 338 3348  
Humansdorp 042 291 1336 • Vryburg 083 379 7294 • Kimberley 053 841 0070  
Schweizer Reneke 083 379 7361 • Douglas 053 298 3733 • Cradock 048 881 9009  
Hartswater 053 473 0106 • Prieska 087 820 4720 • Leudoringstad 018 581 2066



# SUIDWES

**Jou Nampo eenstopwinkel vir die hele gesin, nog groter die jaar!**



## KONTREIWINKELS

Bothaville 056 515 4576 • Bultfontein 051 853 1747 • Delmas 013 665 0500  
 Wolmaransstad 018 596 1076 • Boshof 053 541 0050 • Bloemhof 053 433 1348  
 Leeudoringstad 018 581 2022 • Reivilo 053 953 0233 • Migdol 053 965 0655  
 Stella 018 065 0015 • Bamboesspruit 018 571 0182 • Christiana 053 441 3302  
 Tosca 053 933 0012 • Hertzogville 053 421 9008 • Hoopstad 053 444 1907  
 Louwna 053 970 4007 • Makwassie 018 597 4104 • Vryburg 053 927 2218  
 Wesselsbron 057 899 2137 • Schweizer Reneke 053 963 1294

# Piket

## Implemente

tel: +27(0)22 913 2435

e-pos: info@piket.co.za

web: www.piket.co.za

OPSIONEEL:  
SLEEPSTANG  
BESKIKBAAR VIR  
ALLE MODELLE

10-RY

8-RY

6-RY

10-RY

14-RY

20-RY

ONS **VERKOOP** 'N HELE  
VERSKEIDENHEID **SAADKISTE**,  
SOOS HIERDIE  
**1-3 KOMPARTEMENT**  
**PIKET SAADKIS**

## NO TILL **DEKGEWAS** FYNSAAD PLANTER

- Modelle: 6-Ry / 8-Ry / 10-Ry / 14-Ry / 20-Ry
- 3-Kompartement saad, fynsaad & kunsmis kis.
- Plant van dekgewas in wingerde & vrugteboorde of weiding op suiwel & vee plase.



14-RY / 20-RY:  
PLANT WEIDING OP  
SUIWEL & VEE PLASE



6-RY / 8-RY / 10-RY:  
DEKGEWAS IN WINGERDE  
& VRUGTEBOORDE



NO TILL: PLANT IN  
GEVESTIGDE WEIDING



MAKLIK & VINNIGE  
KALIBRASIE

Kontak ons vir meer inligting by tel: +27(0)22 913 2435 en/of  
stuur 'n e-pos aan: info@piket.co.za of besoek: www.piket.co.za